

# **Delta Electricity**

## **Western Community Reference Group**

**Wednesday 29<sup>th</sup> August 2012**

# Agenda

## Meeting

### *Mt Piper Power Station Seminar Room*



1. Welcome
2. Notes & Business Arising from previous meeting
3. Update Items
  - Operations
  - Rail Unloader Project
  - Water Management
  - NSW Government's Energy Reform Program
  - Angler Access to Thompsons Creek Dam
  - RO Plant and Pipeline
  - BC Upgrade Progress
4. Member Feedback - Committee
5. General Business – Committee

# Updates

---



## Update on Mt Piper Operations



- Mt Piper Unit 1 Outage to begin this weekend.
- Work to be completed includes air heater basket replacement, economiser bend replacement and overhaul of the steam feed pump turbines.
- Mt Piper Unit 2 is in service and operating reliably



## Update on Wallerawang Operations



- Unit 8's 2-week November outage is currently in the planning stages.
- Work to be completed in the boiler and reheater tube replacement and electric motor change outs and turbine alignment.
- Both units have had minor issues with tube leaks.
- TransGrid is continuing with their new switchyard construction project.



## Update on Western Rail Coal Unloader



- Energy Australia (TRUenergy) feasibility study relating to the Coal Unloader is still underway.
- Delta are continuing Environmental monitoring on the site.
- The Unloader Site remains under an agistment agreement.

## Delta Allocation Depends on Oberon Dam Capacity

Oberon Dam Capacity	Allocation ML/annum	%
100%	8184	100%
60%	8184	100%
50%	6540	80%
40%	6540	70%
25%	5724	70%
20%	4908	60%
15%	3276	40%
10%	2616	32%
8%	324	4%



100%

as at 24th August 2012

## Update on Water Management

- Oberon Dam has been spilling for the first time in 10 years and continues to enjoy high levels of stored water.





- Oberon Dam level is at 100%.
- Delta Total Active Storage is at 98.8% with:
  - 💧 Lake Lyell at 100%
  - 💧 Lake Wallace 104.7%
  - 💧 Thompsons Creek Dam 96.9%
- Water management projects continuing.

- NSW Government has appointed a consultant company Goldman Sachs to continue their investigations into possible asset sales.
- Delta has been asked to provide information to this investigation.
- Our focus remains on generating reliably and safely while we await further details.
- Delta is confirming the appropriate property arrangements for community assets such as Lake Lyell and Thompsons Creek Dam

## Update on Angler Access to Thompsons Creek Dam



- There has been some negotiations relating to the Access Agreement.
- We are very close to finalising the document.
- The Access Agreement will ensure access for anglers no matter what happens with the sale of the power stations.
- Working on a new entry sign to include the access rules.



## Update on Wallerawang Reverse Osmosis Plant



- Wallerawang RO Plant and pipeline to Mt Piper, are fully available, however operation is limited while BC's are being upgraded.
- Mt Piper BC's Upgrade - \$500k spent to date. We have another upgrade to be completed prior to Christmas.



# General Business

---

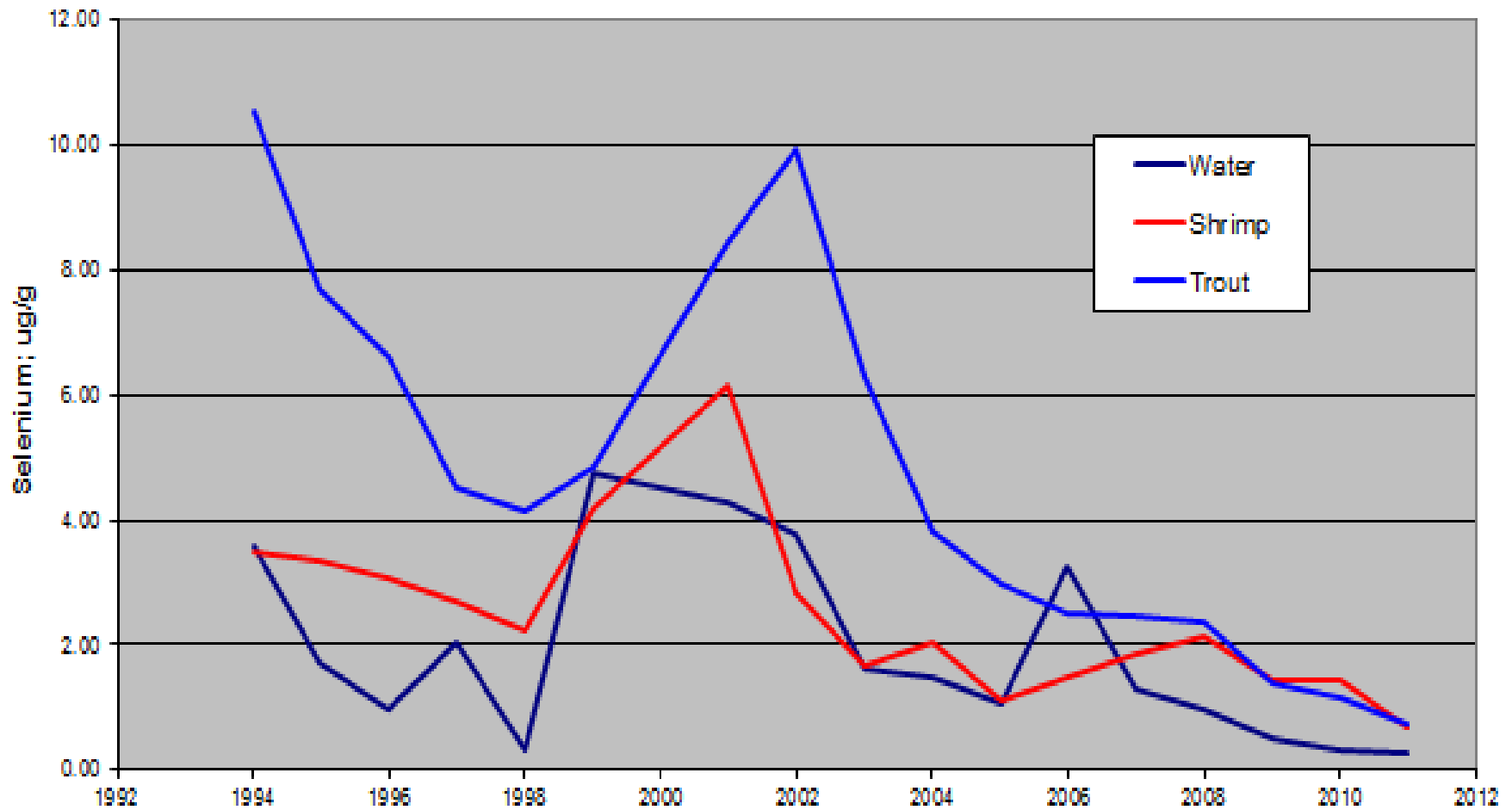


- Emergency Exercise Communications letters were sent out and we had some 70 people so far respond to be added to our emergency contact list.
- All the relevant information is on Delta's website if anyone else wishes to be added to the contact list.
- Planning for the next emergency exercise at Wallerawang is continuing.

## Environment Projects

- In Spring Delta and the Hawkesbury Nepean Catchment Authority will be planting around Thompsons Creek Dam. This is a trial of a direct seeding method of understorey plants at Thompsons Creek Dam
- HNCA Willow Eradication at Lake Wallace
- Tree planting on Delta land by Centennial along Castlereagh Highway for Neubecks Coal Mine Development project
- Lidsdale Cut pump out to reduce seepage into neighbouring lands. We will be maintaining levels to eliminate future occurrences
- New monitoring figures for Lake Wallace show a continuing decreasing trend in Selenium levels.

## Delta Electricity; Selenium Concentration in Lake Wallace Annual Trends





- We will be using an improved version of our lock out procedures during this outage. This improvements highlights the change in isolations due to equipment testing.
- An improvement to our inspection processes will also be in use during the outage with a new regime of hold and witness points. This is to ensure that our contractors' quality of work is applied correctly.