



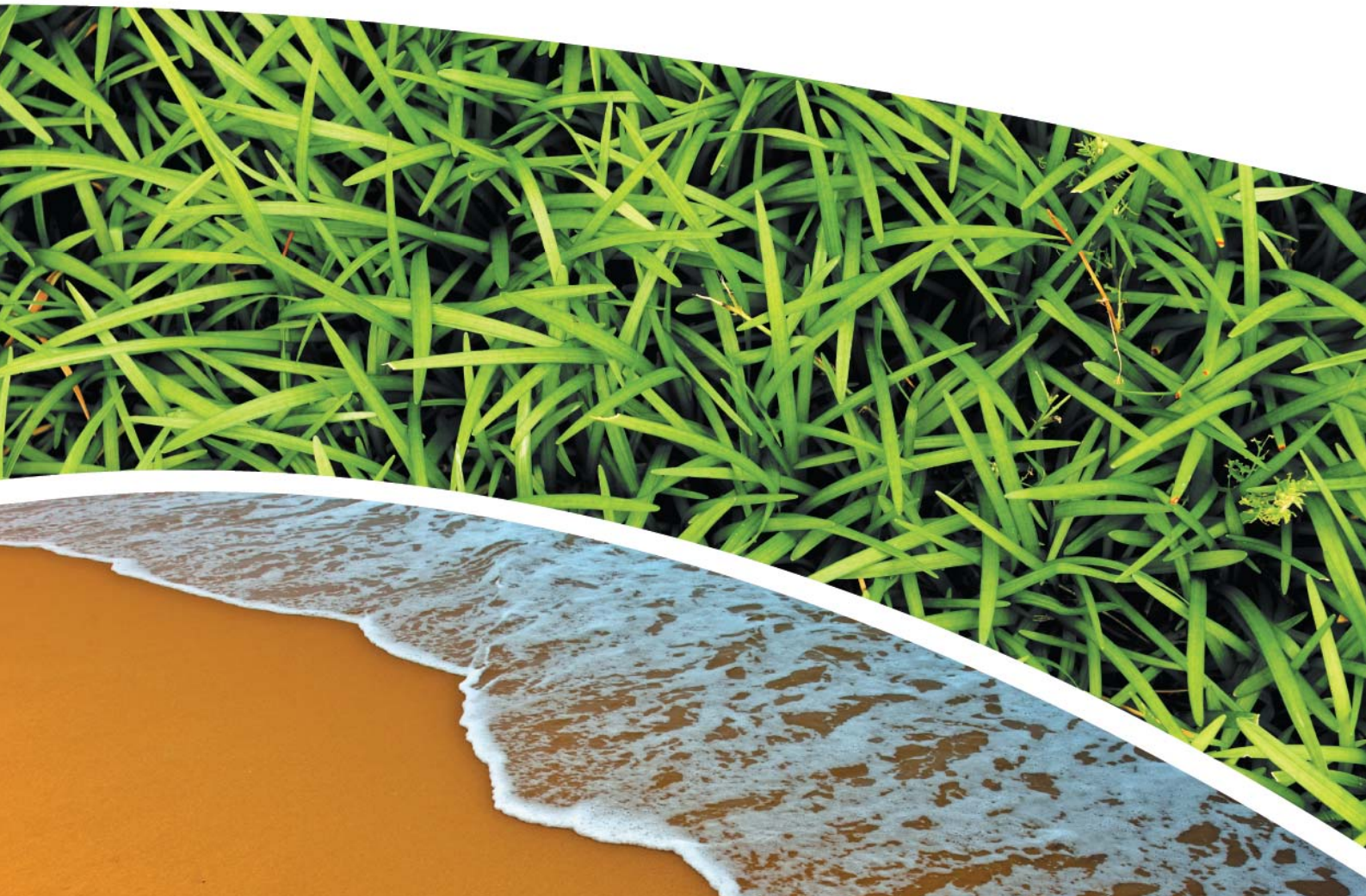
**GROUNDWATER, SURFACE WATER, DEPOSITIONAL DUST,  
HVAS AND METEOROLOGICAL MONITORING**

Prepared for Pine Dale Mine Community Consultative Committee

**Prepared by RCA Australia**

**RCA ref 6880-826/0**

**June 2013**



## RCA AUSTRALIA

ABN 53 063 515 711

92 Hill Street, CARRINGTON NSW 2294


Telephone: +61 2 4902 9200

Facsimile: +61 2 4902 9299

Email: [administrator@rca.com.au](mailto:administrator@rca.com.au)

Internet: [www.rca.com.au](http://www.rca.com.au)

This document is and shall remain the property of RCA Australia. The document may only be used for the purpose for which it was commissioned and in accordance with the Terms of Engagement for the commission supplied at the time of proposal. Unauthorised use of this document in any form whatsoever is prohibited.

DOCUMENT STATUS						
Rev No	Comment	Author	Reviewer	Approved for Issue (Project Manager)		
				Name	Signature	Date
/0	Final	K Shaw	K Tripp	K Tripp		19/07/13

DOCUMENT DISTRIBUTION				
Rev No	Copies	Format	Issued to	Date
/0	1	Electronic (email)	Pine Dale Mine – Graham Goodwin <a href="mailto:graham.goodwin@energyaustralia.com.au">graham.goodwin@energyaustralia.com.au</a>	19/07/13
/0	1	Electronic (email)	EnergyAustralia – Tom Hurdley <a href="mailto:tom.hurdley@energyaustralia.com.au">tom.hurdley@energyaustralia.com.au</a>	19/07/13
/0	1	Electronic (email)	EnergyAustralia- Mark Frewin <a href="mailto:mark.frewin@energyaustralia.com.au">mark.frewin@energyaustralia.com.au</a>	19/07/13
/0	1	Electronic (email)	Lithgow City Council – Andrew Muir <a href="mailto:andrew.muir@lithgow.nsw.gov.au">andrew.muir@lithgow.nsw.gov.au</a>	19/07/13
/0	1	Bound report	Pine Dale Mine – Graham Goodwin PO Box 202, Wallerawang NSW 2845	19/07/13
/0	1	Electronic report	RCA – job archive	19/07/13

RCA LE ref 6880-826/0

19 July 2013

Pine Dale Mine  
PO Box 202  
WALLERAWANG NSW 2845

Attention: Mr Graham Goodwin

---

**REPORT COMPILED FOR  
PINE DALE MINE COMMUNITY CONSULTATIVE COMMITTEE  
DETAILING GROUND WATER, DEPOSITIONAL DUST  
HVAS AND METEOROLOGICAL MONITORING  
JUNE 2013**

---

## 1 GENERAL COMMENTS

Job Number: 6880.

Date Samples Received: During the month of June 2013.

Samples received were sampled by RCA Laboratories – Environmental staff.

This report satisfies the requirements to monitor environmental parameters as presented in the Pine Dale Mine Environmental Protection Licence (EPL 4911). Additional site groundwater bore monitoring results are also presented in this report.

## 2 ANALYTICAL PROCEDURES

The analytical procedures used by RCA Laboratories – Environmental are based on established internationally recognised procedures such as APHA and Australian Standards. Analytical test methods are detailed in **Table 1**. When an external testing laboratory is used to obtain the analysis of samples which become a part of this report, then the details of that laboratory's official report will be attached in an Appendix.

**Table 1** Analytical Test Methods

ANALYSIS	METHOD	UNITS	ANALYSING LABORATORY	NATA / NON-NATA ANALYSIS
Determination of Suspended Particulate Matter	ENV-LAB003	µg/m <sup>3</sup>	RCA Laboratories – Environmental	NATA Analysis
Determination of Particulate Matter – Deposited Matter	ENV-LAB004	g/m <sup>2</sup> /month	RCA Laboratories – Environmental	NATA Analysis
pH	ENV-LAB006	pH	RCA Laboratories – Environmental	NATA Analysis
Conductivity	ENV-LAB010	µS/cm	RCA Laboratories – Environmental	NATA Analysis
Total Suspended Solids	ENV-LAB009	mg/L	RCA Laboratories – Environmental	NATA Analysis
Total Dissolved Solids		mg/L	RCA Laboratories – Environmental	NATA Analysis
Turbidity	ENV-LAB037	NTU	RCA Laboratories - Environmental	NATA Analysis
Oil and Grease	ENV-LAB022	mg/L	RCA Laboratories - Environmental	Non-NATA Analysis
Major Anions (Alkalinity, Cl, SO <sub>4</sub> )	ED037, ED041, ED045	mg/L	ALS	NATA Analysis
Major Cations (Ca, Mg, Na, K)	ED093	mg/L	ALS	NATA Analysis
Dissolved Metals	EG020F	mg/L	ALS	NATA Analysis

### 3 WATER ANALYSIS RESULTS

#### 3.1 GROUNDWATER

A total of 5 on-site groundwater samples were collected during the month of June 2013. No sample was collected from groundwater monitoring location P4 as the bore did not contain sufficient water to sample. Water quality analysis results are shown in **Table 2**.

**Table 2** *Groundwater Analysis Results*

ANALYSIS	UNITS	P2	P3	P6	P7	P7a
Sample Number		06136880019	06136880020	06136880010	06136880021	06136880022
Date Sampled	-	24/06/13	24/06/13	24/06/13	24/06/13	24/06/13
Time Sampled	-	9:25	9:20	16:08	8:57	9:04
Standing Water Level	m	5.35	6.07	26.81	7.83	9.04
Standpipe Height	m	0.95	0.66	0.95	1.00	0.90
Relative Standing Water Level*	m	4.40	5.41	25.86	6.83	8.14
pH	pH unit	4.8	4.5	6.1	6.2	6.0
Conductivity	µS/cm	255	640	1177	813	902
Dissolved Iron	mg/L	1.04	1.72	24.2	<0.05	2.05

**NOTES:** \*Depth relative to ground level (not standpipe height).

Groundwater monitoring locations are shown in **Appendix 1**.



### 3.2 EPA SURFACE WATER MONITORING

Routine quarterly surface waters were not scheduled to be monitored this month. Quarterly surface water monitoring is next scheduled to be undertaken in August 2013.

## 4 AIR QUALITY MONITORING RESULTS

### 4.1 HIGH VOLUME AIR SAMPLERS (HVAS)

HVAS at this facility conform to AS/NZS 3580.9.3:2003, AS/NZS 3580.9.6:2003 and AS/NZS 3580.1.1:2007.

HVAS Total Suspended Particulate analysis results are shown in **Table 3**;

PM<sub>10</sub> Suspended Particulate Matter results are shown in **Table 4**.

**Table 3** *Total Suspended Particulates ( $\mu\text{g}/\text{m}^3$  0°C 101.3 kPa)*

RUN DATE	TSP ( $\mu\text{g}/\text{m}^3$ )	SAMPLE NUMBER	FILTER NUMBER	DATE FILTER OFF	TIME FILTER OFF	FIELD TECH	HOURS RUN
02-Jun-13	9	06136880043	8698230	04-Jun-13	10:57	Client	34.78*
08-Jun-13	10	06136880045	8702990	11-Jun-13	13:15	Client	34.78*
14-Jun-13	3	06136880047	8702992	17-Jun-13	10:45	Client	34.78*
20-Jun-13	25	06136880049	8702994	24-Jun-13	10:05	Client	34.79*
26-Jun-13	6	06136880051	8702996	27-Jun-13	11:00	K Shaw	34.81*

\*Please note that samples from the TSP machine ran for 34 hours (rather than the standard 24 hours) due to a timer programming error. The TSP timer unit has since been reprogrammed.

**Table 4** *Suspended Particulate Matter PM<sub>10</sub> ( $\mu\text{g}/\text{m}^3$  0°C 101.3 kPa)*

RUN DATE	PM <sub>10</sub> ( $\mu\text{g}/\text{m}^3$ )	SAMPLE NUMBER	FILTER NUMBER	DATE FILTER OFF	TIME FILTER OFF	FIELD TECH	HOURS RUN
02-Jun-13	3	06136880044	8698231	04-Jun-13	10:57	Client	24.00
08-Jun-13	5	06136880046	8702991	11-Jun-13	13:15	Client	24.00
14-Jun-13	1	06136880048	8702993	17-Jun-13	10:45	Client	24.03
20-Jun-13	13	06136880050	8702995	24-Jun-13	10:05	Client	24.00
26-Jun-13	4	06136880052	8702997	27-Jun-13	11:10	K Shaw	24.00

#### 4.1.1 Allowable TSP Limits

The EPA Annual Mean TSP allowable limit is 90 $\mu\text{g}/\text{m}^3$ . All TSP HVAS results recorded during this monitoring period are in compliance with consent conditions, as the *current rolling annual mean* (from July 2012 to June 2013) for the TSP unit is 24.3 $\mu\text{g}/\text{m}^3$ , which is well below the allowable limit of 90 $\mu\text{g}/\text{m}^3$ . Due to a programming error, all runs during this month were approximately 10 hours greater than the standard 24 hour run period.

#### **4.1.2 Allowable PM<sub>10</sub> Limits**

The EPA 24h Maximum PM<sub>10</sub> allowable limit is 50µg/m<sup>3</sup>. The EPA Annual Mean PM<sub>10</sub> allowable limit is 30µg/m<sup>3</sup>. All PM<sub>10</sub> HVAS results recorded during this monitoring period conform to consent conditions, as the *current rolling annual mean* for the PM<sub>10</sub> unit is 11.3µg/m<sup>3</sup>, which is below the allowable limit of 30µg/m<sup>3</sup>. The 24 hour maximum allowable limit of 50µg/m<sup>3</sup> was not exceeded on any run day during the June 2013 monitoring period.

#### **4.1.3 Comments**

HVAS monitoring locations are shown in **Appendix 1**.

Graphical HVAS results presentations are shown in **Appendix 2**.

## 4.2 DEPOSITIONAL DUST

Depositional Dust Gauges at this facility conform to AS/NZS 3580.10.1:2003 and AS/NZS 3580.1.1:2007. Depositional Dust monitoring results are shown in **Table 5**.

**Table 5** *Depositional Dust Monitoring - Deposited Matter April 2013*

SAMPLE NO	DEPOSIT GAUGE	DATE SAMPLE STARTED	DATE SAMPLE COMPLETED	NO OF DAYS	NOTES	INSOLUBLE SOLIDS (g/m <sup>2</sup> /month)	ASH (g/m <sup>2</sup> /month)	COMBUSTIBLE MATTER (g/m <sup>2</sup> /month)
06136880033	6880-D1	22/05/2013	24/06/2013	33*	I	0.3	0.1	0.2
06136880034	6880-D2	22/05/2013	24/06/2013	33*	I	0.5	0.2	0.3
06136880035	6880-D3	22/05/2013	24/06/2013	33*	I	0.4	0.2	0.2
06136880036	6880-D4	22/05/2013	24/06/2013	33*	I	0.2	0.1	0.1
06136880037	6880-D5	22/05/2013	24/06/2013	33*	I	0.4	0.2	0.2
06136880038	6880-D6	22/05/2013	24/06/2013	33*	I	1.0	0.4	0.6

\*Please note that insoluble solids, ash residue and combustible matter are calculated based on a 30 day month as per Australian Standard 3580.10.1. Exposure days are taken into consideration as a variable when conducting this calculation and producing results in g/m<sup>2</sup>/month.

### 4.2.1 Glossary of Terms Used in Notes

I Insects (e.g. ants, spiders)

### 4.2.2 Allowable Depositional Dust Limits

The EPA Long Term (Annual Average) Dust Limit is 4g/m<sup>2</sup> per month. All Depositional Dust results during this monitoring period are in compliance with consent conditions. The Annual Average for Dust Gauges D1, D2, D3, D4, D5 and D6 are all less than 1.0g/m<sup>2</sup> per month, which is below the allowable Annual Average Long Term Limit of 4g/m<sup>2</sup> per month. The depositional dust exposure period for June (33 days) is outside of the typical exposure period of 30 ±2 days nominated in AS/NZS 3580.10.1:2003, however, results are based on a 30-day month hence the additional exposure has been factored into the equation during calculation, therefore results for June are considered accurate and reliable.

Depositional Dust monitoring locations are shown in **Appendix 1**. Graphical Depositional Dust results are shown in **Appendix 2**.



## 5 BLASTING RESULTS

Blasting results for the month of June are shown in **Table 6**.

**Table 6** *Blasting Results- Airblast Overpressure (dB) and Ground Vibration (mm/sec)*

Date	<i>Park</i>		<i>Noon St.</i>		<i>Summer St.</i>	
	Overpressure (dB)	Vibration (mm/sec)	Overpressure (dB)	Vibration (mm/sec)	Overpressure (dB)	Vibration (mm/sec)
6/06/2013	NT	NT	111.9	1.32	113.3	1.22
14/06/2013	NT	NT	78.3	1.74	87.2	1.95
21/06/2013	NT	NT	106.6	1.45	104.5	1.27
<b>2012- 2013 Year to Date Information</b>						
Minimum	---	---	78.3	0.08	87.20	0.10
Average	---	---	105.3	1.0	106.8	1.2
Maximum	---	---	113.8	2.69	116.30	2.85
% > EPL 95% Compliance Criteria	---	---	0.0%	0.0%	2.6%	0.0%
% > EPL 100% Compliance Criteria	---	---	0.0%	0.0%	0.0%	0.0%

**Notes:** NT No Trigger. Blast monitoring unit was not triggered during the blast.

NA No monitoring conducted at this location.

No blasts have been triggered at the Park within the 12 month period sensor and therefore there is no rolling data available for this site.

---

### **5.1.1 Allowable Blasting Limits**

Conditions of EPL 4911 state that in relation to airblast overpressure levels a result of greater than 115dB must not be observed at any noise sensitive location for more than 5% of the total number of blasts over each annual reporting period. All blasts within the annual reporting period (100% of blasts) are not to exceed the compliance criteria of 120dB. Ground vibration peak velocity levels must not exceed 5mm/sec for 95% of blasts, whilst an intensity of 10mm/sec must not be exceeded by any blast during the reporting period. The reporting period runs as a rolling 12-month average from July 2013 to June 2013.

During June 2013, there were nil exceedances of the EPL conditions for both overpressure and vibration levels. In terms of the rolling annual average, no blasts have exceeded the 100% compliance conditions of 120dB and 10mm/sec for overpressure and vibration respectively. The overpressure and vibration criteria of 115dB and 5mm/sec, respectively, have not been exceeded for more than 5% of the blasts during the reporting period.

Graphical blasting results from overpressure and vibration are presented in **Appendix 2**.

## **6 NOISE MONITORING RESULTS**

Routine quarterly noise monitoring was not required to be undertaken this month. Quarterly noise monitoring is next scheduled to be undertaken during the July 2013 period.

## **7 OPERATIONAL ACTIVITIES**

Pine Dale Mine production rates in June 2013 were good, with no major issues recorded. There were 19 production days available with no weekend work undertaken. One Public Holiday was observed during the month.

Moderate rainfall was observed throughout the month, 79.2 mm total, which predominantly fell on the 2<sup>nd</sup>, 13<sup>th</sup>, 25<sup>th</sup> and 26<sup>th</sup> of the month. Production material targets have largely been achieved this month, with coal tonnage slightly below target, whilst overburden was slightly above forecast. In total 113,000 tonnes of overburden were excavated and 25,000 tonnes of coal delivered to Mt Piper Power Station. Two drills ran for the majority of the month in order to build up shot material after the drill outage in May; overall three blasts were shot this month.

An Ecologist audited and reported that the Purple Copper Butterfly was not evident on site which has allowed for rehabilitation works to recommence.

## **8 SUMMARY**

During the month of June 2013 all environmental monitoring constituents were found to be in compliance with EPL 4911.

Quarterly surface waters were not scheduled to be sampled this month. Surface water Quality monitoring is next scheduled to be undertaken in August 2013.

---

Rolling annual averages from both the TSP and PM<sub>10</sub> High Volume Air Samplers are currently well below the EPA Annual Mean TSP and PM<sub>10</sub> criterion of 90µg/m<sup>3</sup> and 30µg/m<sup>3</sup> respectively. There were zero exceedances of the PM<sub>10</sub> short term impact assessment criteria of 50µg/m<sup>3</sup> over twenty-four hours during June 2013.

Currently there are no depositional dust gauge results which are greater than the EPA Long Term (annual average) criteria of 4g/m<sup>2</sup>/month based upon a rolling average of the past 12 months.

During June there were nil exceedances of the blasting requirements documented in the Pine Dale Mine EPL. During the previous twelve month reporting period, there were nil non-conformance's based upon the 95% or 100% limits for either overpressure or vibration levels.

*This report must not be reproduced except in full. Results or figures from this report must not be used without acknowledgment.*

Please contact the undersigned if you have any queries.

Yours sincerely



Katy Shaw  
Environmental Scientist  
RCA Australia Pty Ltd trading as  
RCA Laboratories – Environmental

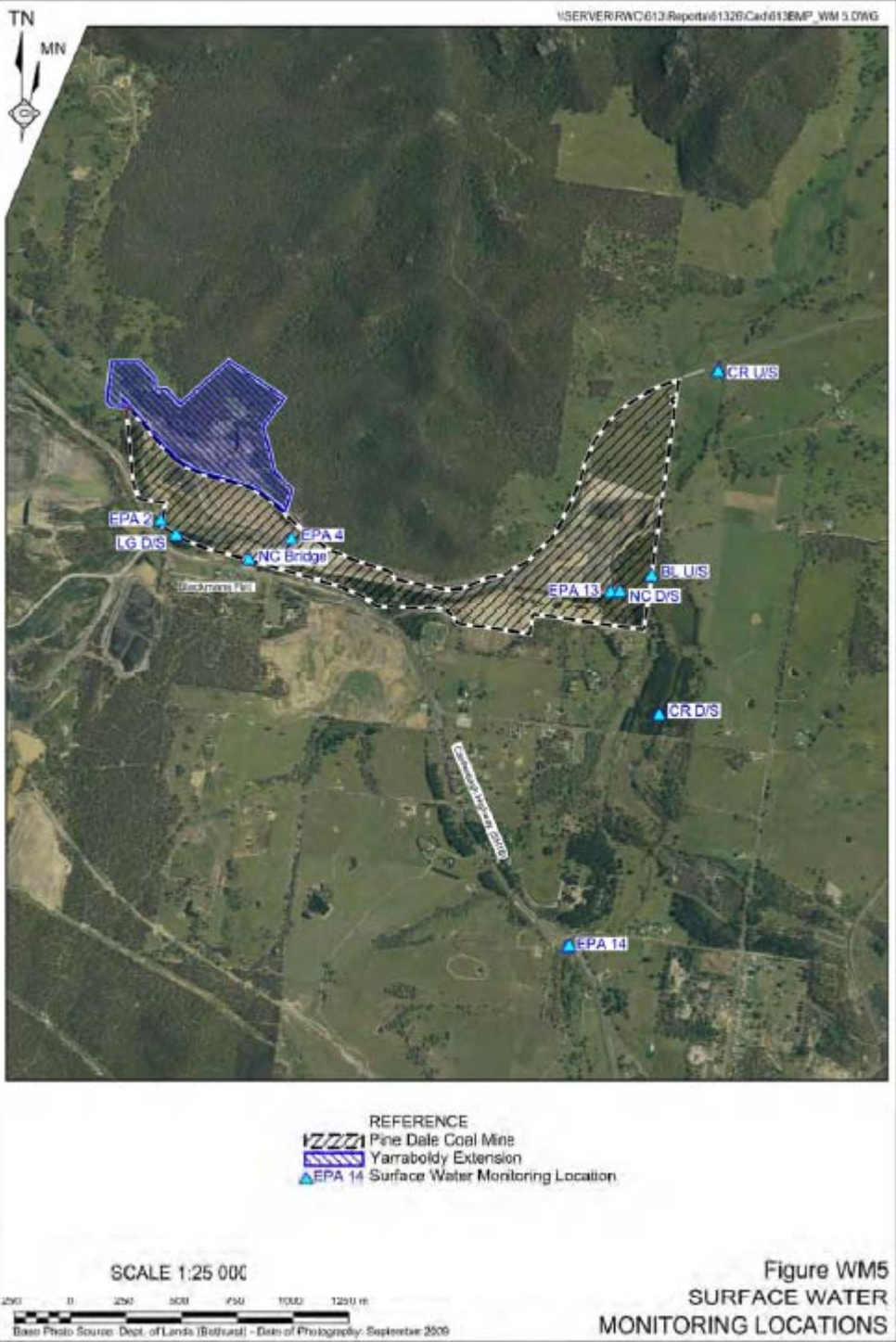


Karen Tripp  
Senior Environmental Scientist/Hygienist  
RCA Australia Pty Ltd trading as  
RCA Laboratories – Environmental

# Appendix 1

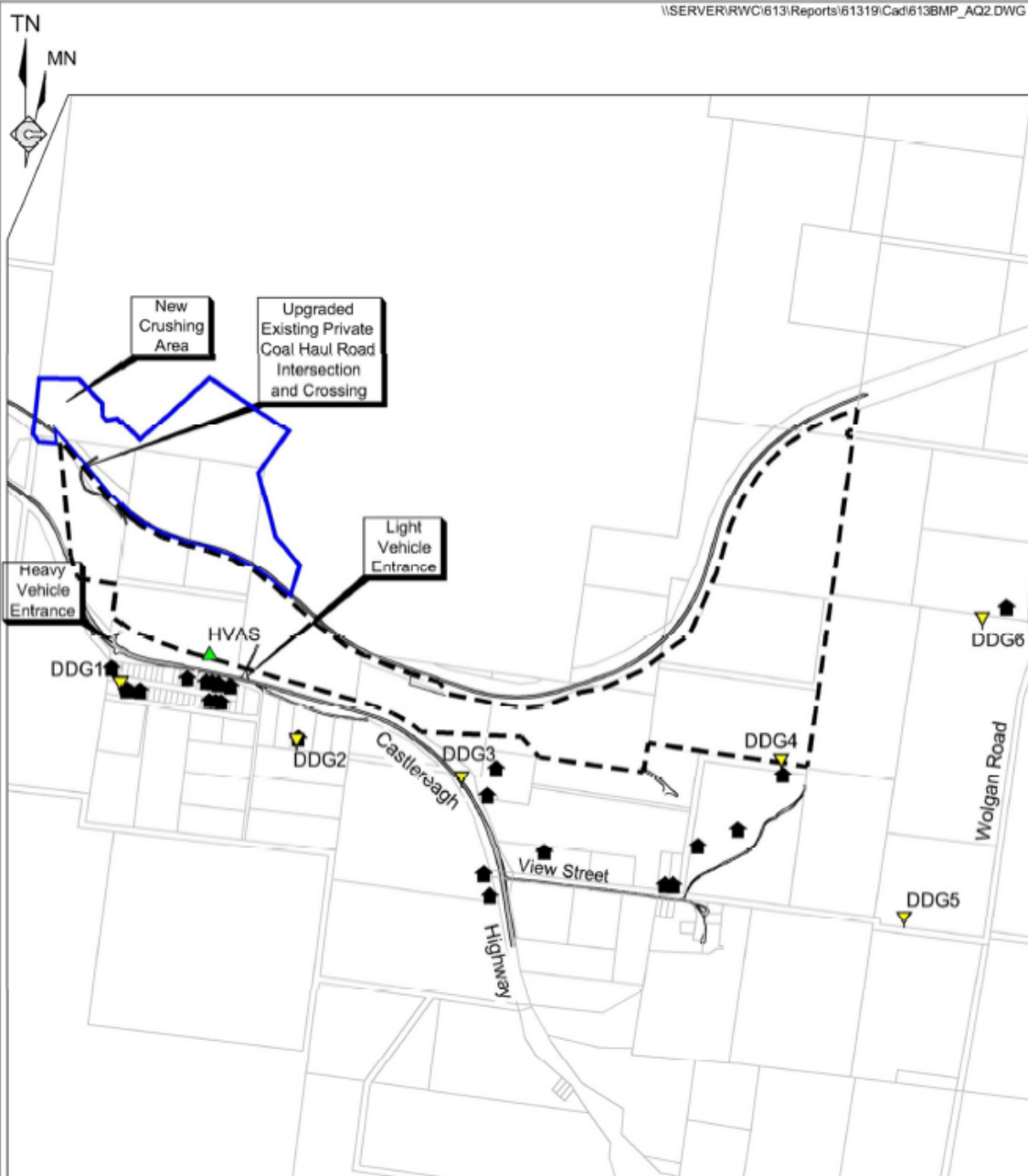
---

Surface Water Groundwater and Air Quality  
Monitoring Locations









- REFERENCE
- - - Pine Dale Coal Mine
  - Yarraboldy Extension
  - Cadastral Boundary
  - 🏠 Residence
  - ▼ DDG1 Air Quality Monitoring Location (Deposited Dust)
  - ▲ HVAS Air Quality Monitoring Location (High Volume Sampling)

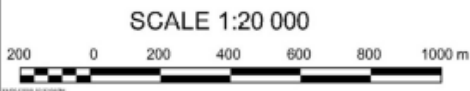


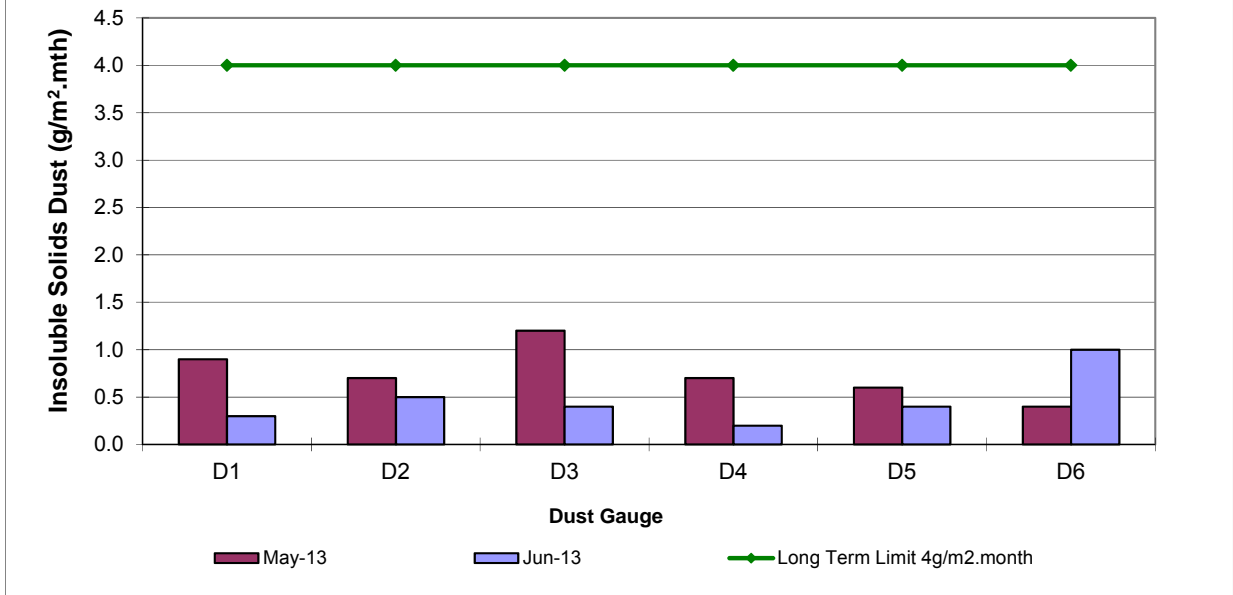
Figure AQ2  
AIR QUALITY MONITORING  
LOCATIONS

# Appendix 2

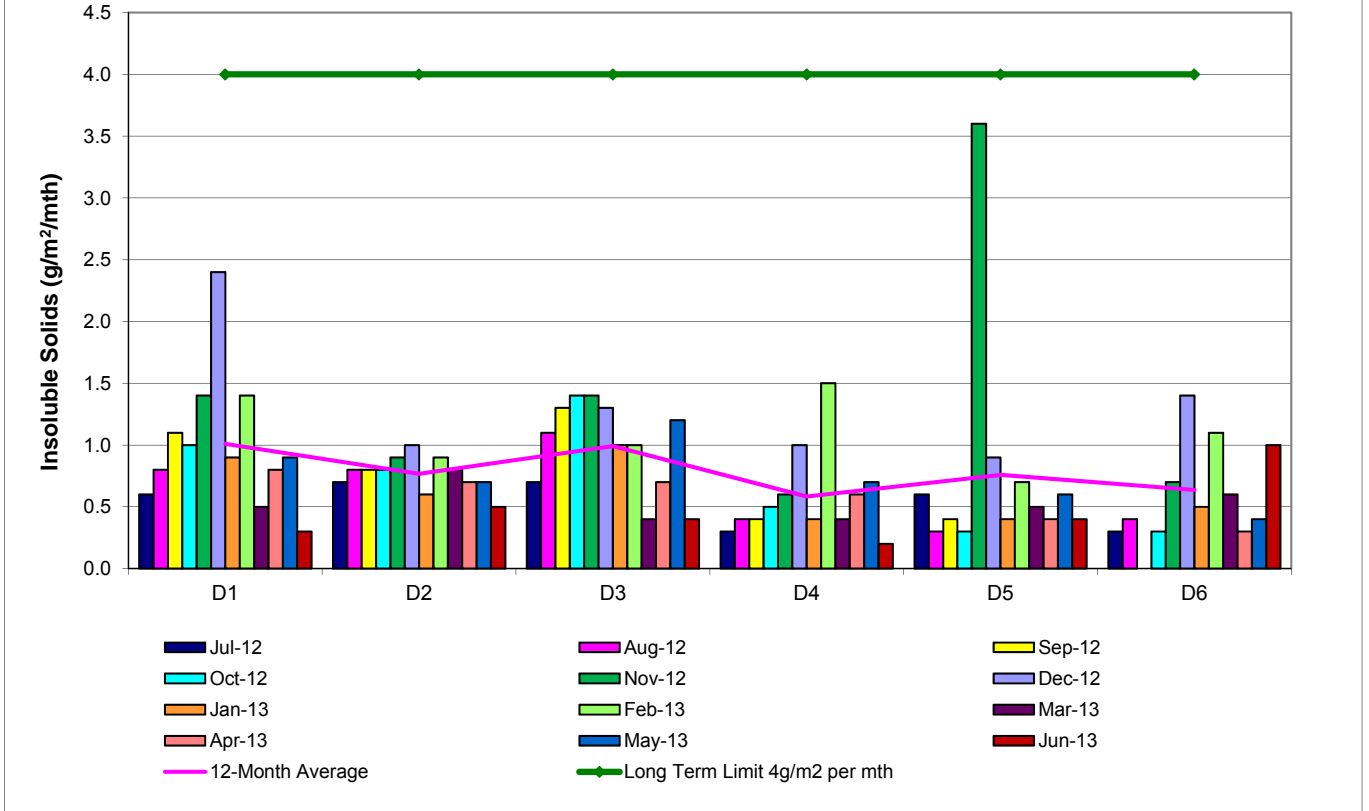
---

Depositional Dust, HVAS and Blast Result Graphs

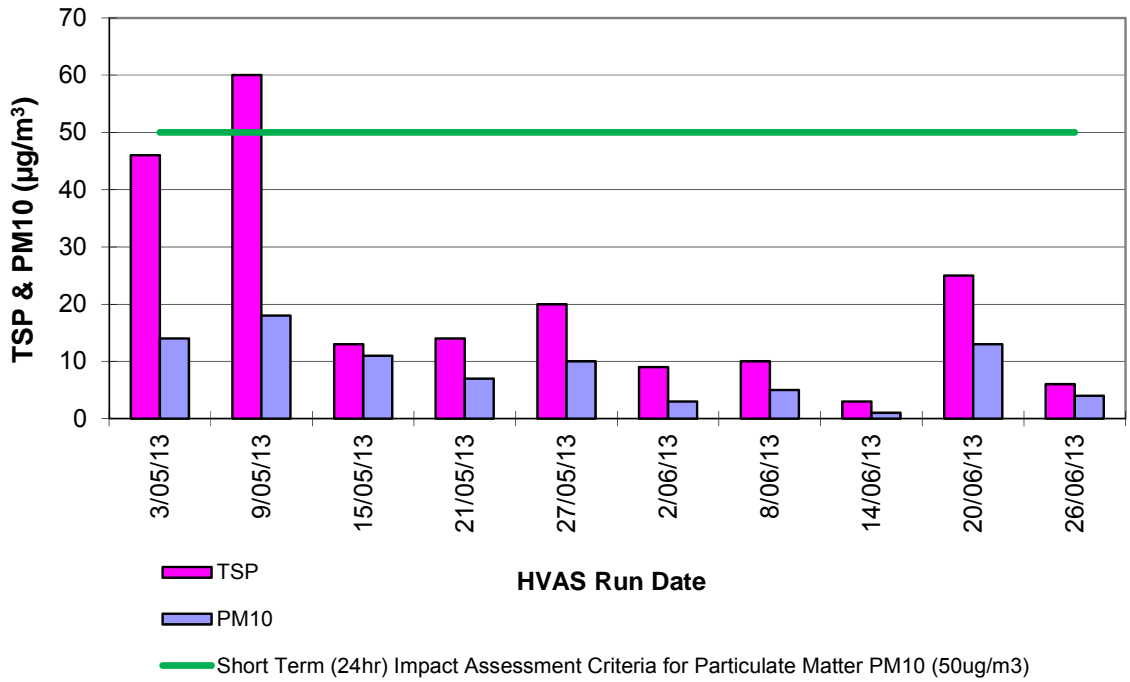
**Pine Dale Mine  
Depositional Dust Gauge Comparative Results  
May 2013 - June 2013**



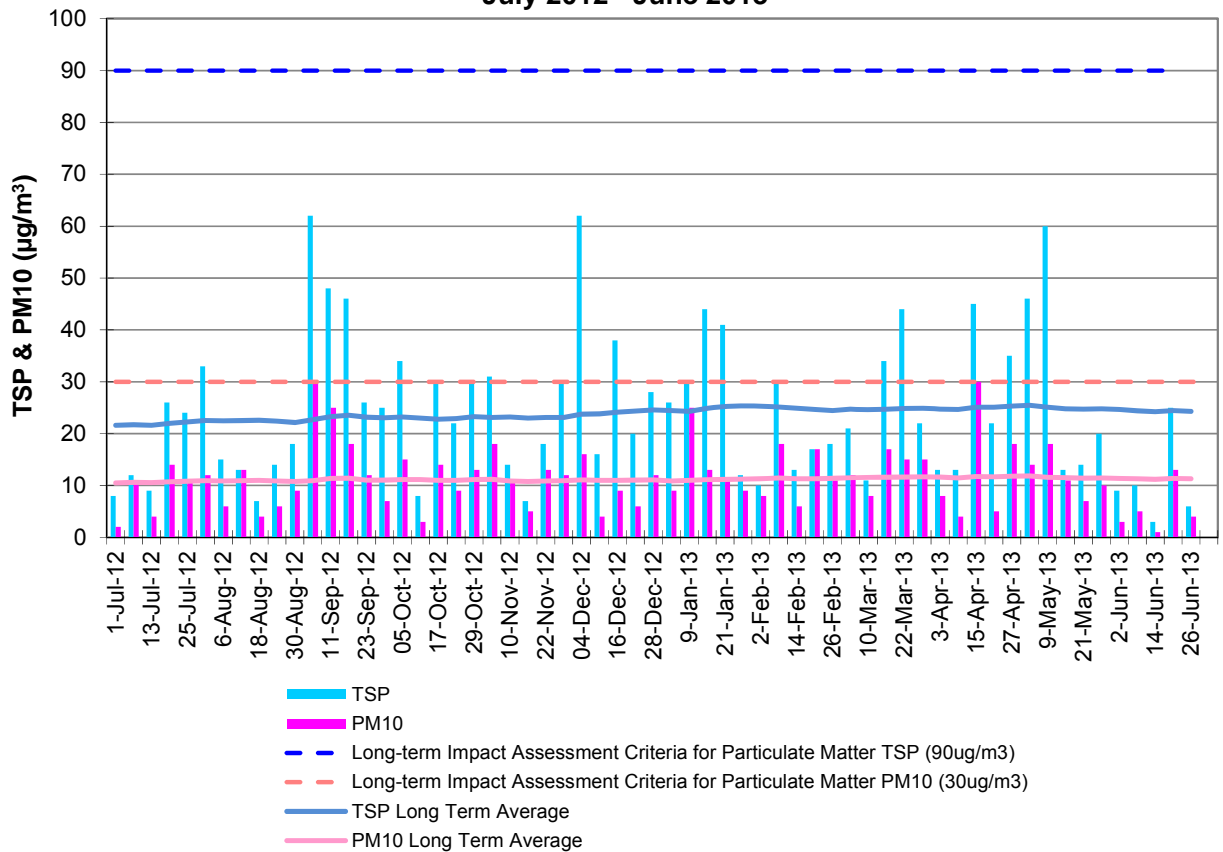
**Pine Dale Mine  
Deposited Matter - Insoluble Solids 12 Months Comparative Results  
July 2012- June 2013**



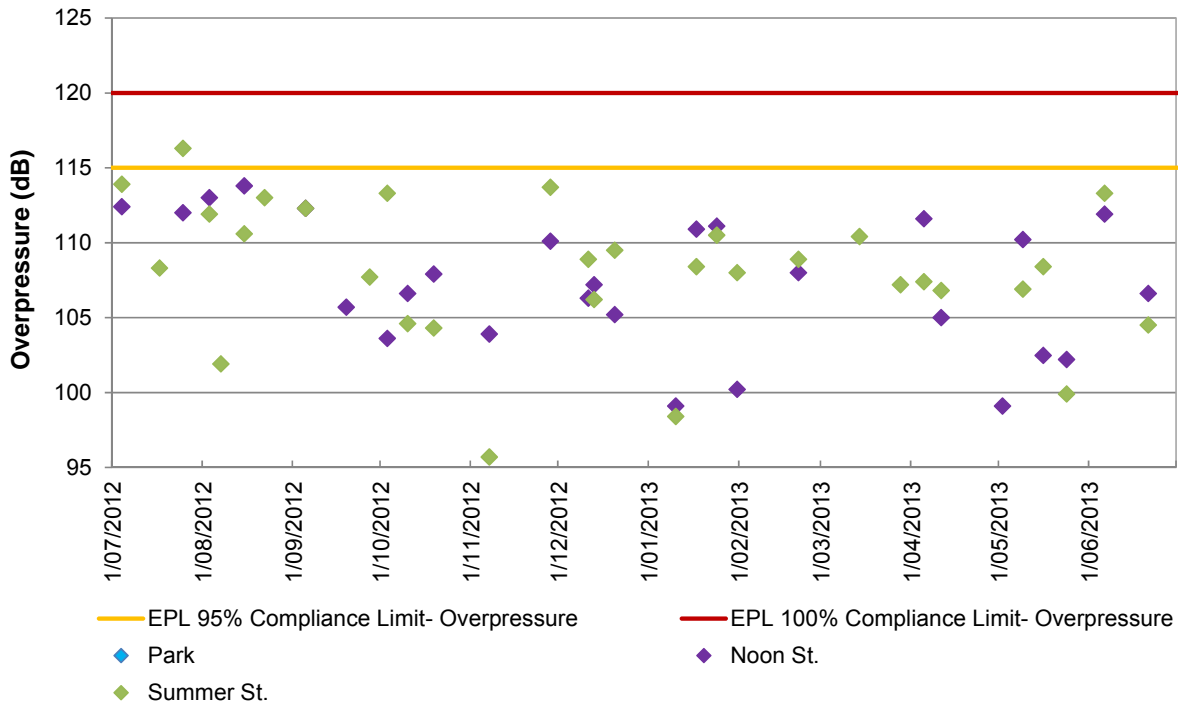
**Pine Dale Mine  
TSP & PM10 Results  
May 2013 - June 2013**



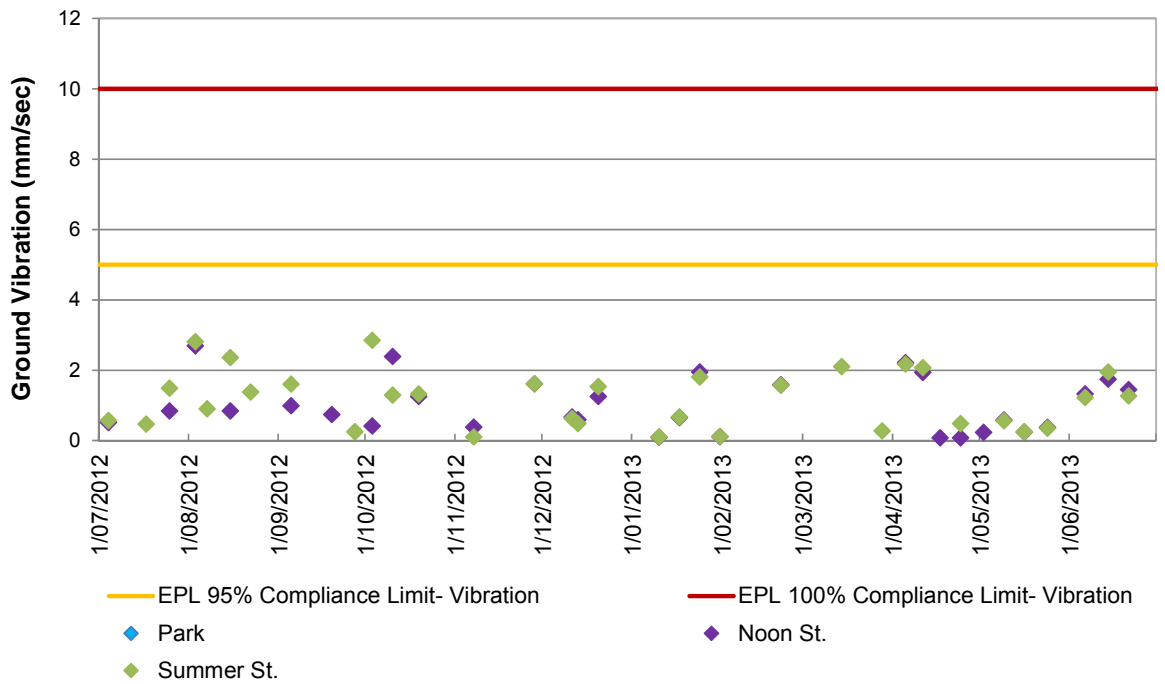
**Pine Dale Mine  
TSP & PM10 HVAS 12-Month Comparative Results  
July 2012 - June 2013**



**Pine Dale Mine  
Blasting- Airblast Overpressure  
July 2012 to June 2013 Comparable Data**



**Pine Dale Mine  
Blasting- Ground Vibration  
July 2012 to June 2013 Comparable Data**



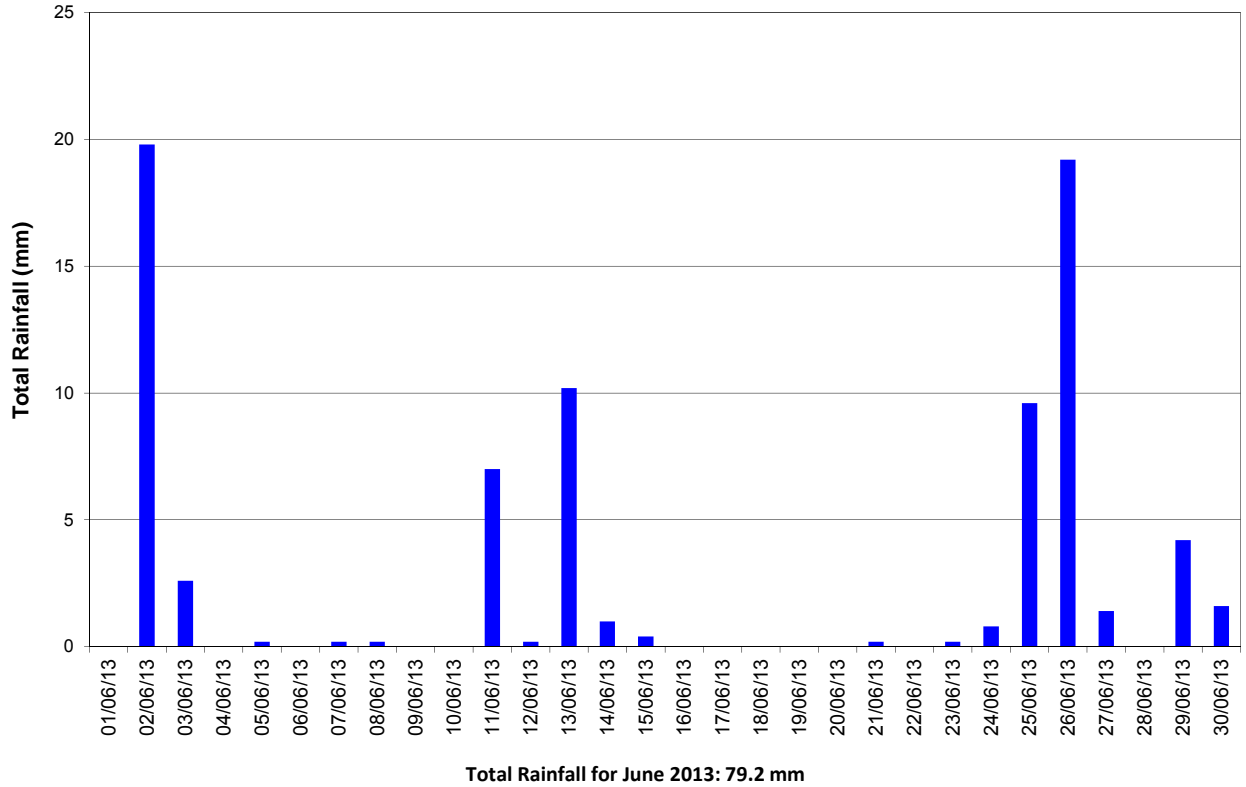
# Appendix 3

---

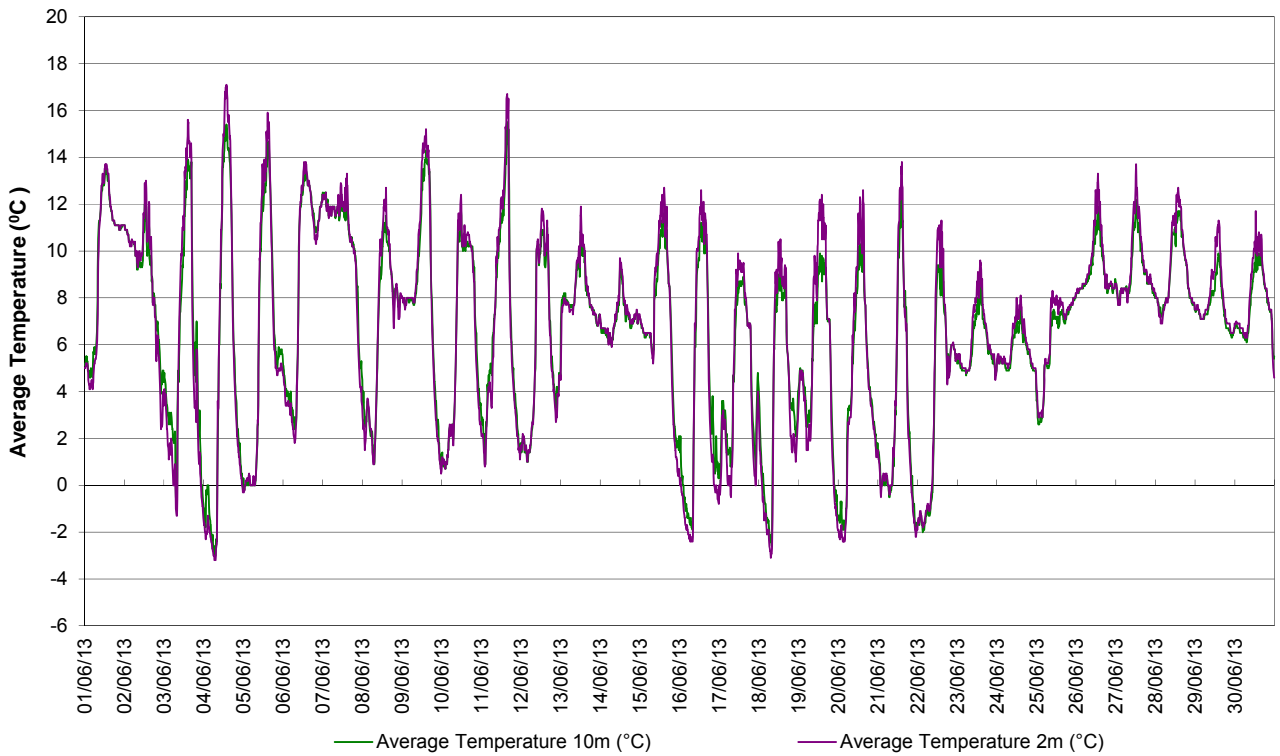
Meteorological Data



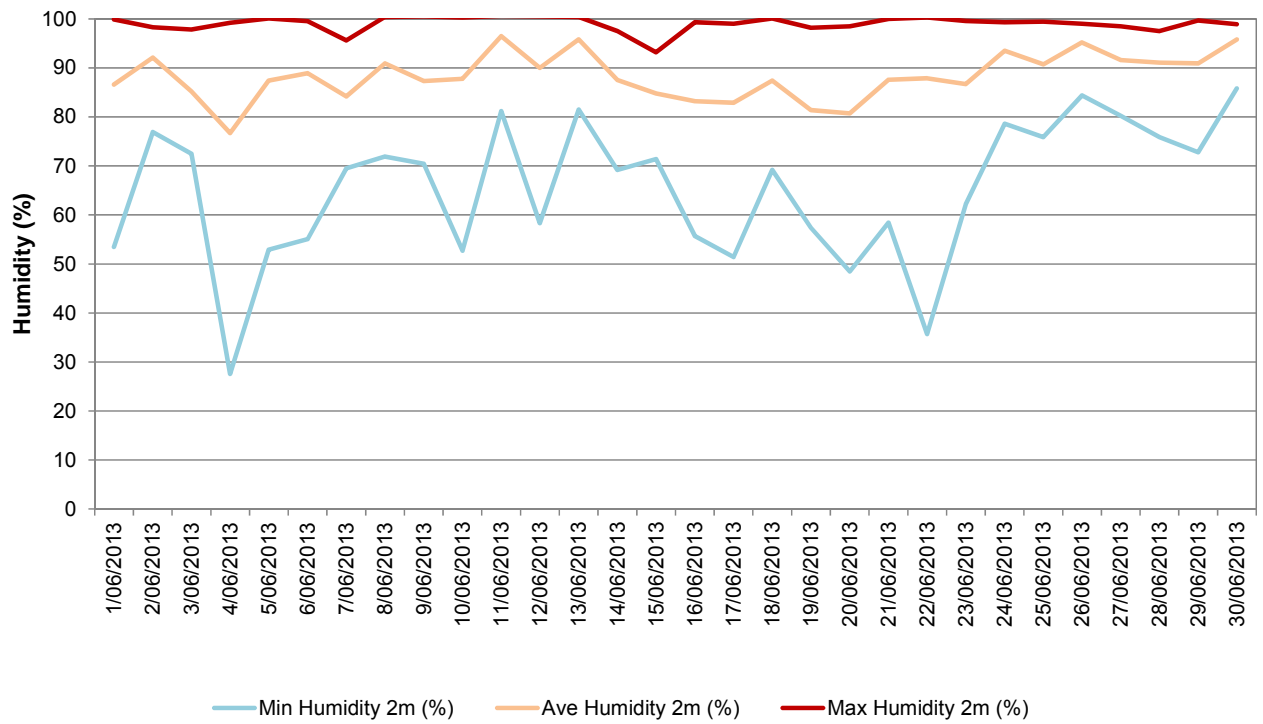
**Blackmans Flat NSW**  
**Total Rainfall - Period: 1/06/2013 to 30/06/2013**



**Blackmans Flat NSW**  
**Average Air Temperature - Period: 1/06/2013 to 30/06/2013**



**Blackmans Flat NSW**  
**Daily Humidity Variations - Period: 1/06/2013 to 30/06/2013**



**Blackmans Flat NSW**  
**Sigma Theta Variations - Period: 1/06/2013 to 30/06/2013**

