

EnergyAustralia Lithgow Region Community Consultative Committee

FINAL Meeting Minutes – 09 December 2025

Member attendees:

- Julie Favell
- Brian Fitzgerald
- Rob White
- Auntie Helen Riley
- Cr Ray Smith – Lithgow City Council
- Jonathon English – EnergyAustralia
- Ben Eastwood – EnergyAustralia
- Cath Russell – EnergyAustralia

Also present:

- Sandra Politi – Lithgow City Council
- Maree Young – EnergyAustralia

Apologies:

- Jim Whitty
- Brad Cluff
- Jamie Giokaris

Presenters:

- Jarvis Lulham – EnergyAustralia
- Matt Bruers -- EnergyAustralia
- Dave Simpfendorfer – EnergyAustralia

Chair:

- Brendan Blakeley

Item	Discussion Point
------	------------------

- | | |
|---|---|
| 1 | Welcome and introductions <ul style="list-style-type: none">• The meeting began at 5:05pm.• The Chair welcomed all members.• The Chair acknowledged Country.• The chair asked for declarations of interest:<ul style="list-style-type: none">- The Chair noted he chaired a similar group for EnergyAustralia at Tallawarra Power Station.- The Chair declared payment received from EnergyAustralia for his role as independent chair of this CCC.- The Chair noted that Auntie Helen had advised him that Mingaan had recently received funding from Greenspot, Energy Australia and Centennial to fund the accommodation for their Ranger Program. |
| 2 | Questions on notice and actions (see slides 6 to 9)
<u>Wombat Mange program update</u>
Ben Eastwood noted: <ul style="list-style-type: none">• The program is continuing. The team has increased the amount of Cydectin being used and looking at targeted shorter duration dosing programs. |

Item	Discussion Point
------	------------------

- Wombat activity is being observed via cameras.
- Team members are undertaking training with the Wildlife Protection Society (WPS) to run the Mt Piper program under a WPS licence.
- This enables the team to make contact with the wombats when treating them and to apply doses directly using extended poles.
- *Rob White asked about dose rates and whether dose rates assume potential for overflow from the flap device.*
- Ben replied that in determining the dose the team accounts for a degree of waste. They are working to the WPS recommendations for a regime of 3 doses over 3 weeks.

Questions on notice

- *Julie Favell asked for an update on her suggestion to construct a wetland to support remediation of Wangcol.*
 - Jonathan and Ben replied that:
 - The primary focus is on improving water management in MPAR to limit the amount of water entering the ash repository and salts leaching into groundwater. This includes extensive capping and water diversion works.
 - EnergyAustralia is also committed to rehabilitating areas of Wangcol Creek that have been used for mining and looking at all feasible options to reduce salinity in Wangcol Creek.
 - EnergyAustralia will consider what role they can play in doing this as some of the land is not within their operational boundary.
 - *Julie noted that in addition to environmental benefits such as using plants to cleanse water, the wetlands could use algae which has been shown to be effective in treating heavy metals in water.*
 - *The wetlands could be dedicated to the memories of people who worked in coal and energy industries that were the foundation of the area.*
 - *Julie Favell asked “when will EA/MPPS submit a development application to reduce emission with a battery/s charged with renewable energy only (potentially supplied with EnergyAustralia’s current PPAs) to suffice the Mt Piper power station operational electricity usage. It shows the public/community the company is leading by example reducing local emissions and the transition away from fossil fuels.”*
 - Jonathan and Ben replied that:
 - The Mt Piper Bess and Lake Lyell are two transition projects EnergyAustralia is pursuing in the area.
 - 2028 will mark the 100 years of power generation in Lithgow and it is likely to be the year the BESS starts.
 - The intent is to close Mt Piper as soon as possible but also to have it available to use when needed through to 2040 if required.
 - *In the August meeting Rob White asked about the Aboriginal groups that had been engaged in developing the community benefits program for the Mt Piper BESS Project.*
 - Cath Russell noted the following contacts:
-

Item	Discussion Point
------	------------------

- Barrinang Aboriginal Corporation – Rick Slaven
- Bathurst Aboriginal Land Council - Cr Leeanne Hampton
- One Mob Aboriginal Corporation – Brandon Sutherland
- Mingaan Wiradjuri Aboriginal Corporation – Aunty Sharon Riley

- *Rob White asked for additional information about One Mob.*
- *Auntie Helen stated they were a group associated with Bob Suter.*

The Chair pointed out that this was a separate process to the Registered Aboriginal Parties that were contacted regarding Lake Lyell Pumped Hydro.

3	Environmental Monitoring and Performance Across 2025.
---	--

Water Access Licence (*See slides 12 - 15*)

Ben noted the following points:

- The majority of water was now coming from the Springvale Water Treatment Plant.
- Reliance on water from natural catchments has been steadily reducing after the closure of Wallerawang, the overall decrease in power output and use of treated water from Springvale.
- With 90% of water coming from other sources for use at MPPS, the pressure is off using riparian water in the Coxs river.
- Its important to recognise that water extracted from the Cox River (Lake Lyell) is not always used at MPPS as water can be directed to Thompsons Creek Reservoir (TCR) or returned to the catchment to Lake Wallace.
- Riparian releases are quite steady and are required to manage the operating level in Thompsons Creek Reservoir at between 1031 to 1032 metres.
- Volumes released for riparian flows vary with seasons.
- *Rob White asked about how water is accessed from the Fish River.*
- Ben replied that this was from the Fish River Supply Scheme which sources water from from Oberon. The Fish River Supply pipeline goes from Oberon through Portland, Cullen Bullen to Glen Davis, it also passes through Lithgow up to Katoomba.

Mt Piper Ash Repository (*See slide 17 - 20*)

- MPAR has had brine conditioned ash placed there since 2000.
 - It is not a lined repository.
 - Monitoring bores have been sunk to help us track leaching into groundwater system. Although above the Environmental Goal groundwater chloride concentrations around MPAR are at least
-

Item	Discussion Point
------	------------------

staying within historical levels and no new sources of chlorides contamination have been detected.

- Once completed the capping and diversion works will stop water entering the repository and percolating into the groundwater. However, it will still take some time for chloride in groundwater to decrease.
- Surface water monitoring of chlorides shows concentrations have remained below the Environmental Goal across 2025.
- Chloride is used as an indicator element.
- When spikes in surface water occur, they are generally associated with low rainfall periods as concentrations of salts in the creek water increase.
- Within the creek itself some of the sites that show high concentrations are old mining works.

Julie noted that some readings in the Coxs River near Wallerawang are very high at the moment.

Lamberts North Ash Repository (See slide 22 to 30)

- Extensive lining works are well underway. The lining comprises 6 different layers and includes a subgrade of 500 mm of gravel.
- LNAR dust results are good and consistently below levels set in conditions of consent. Dust sampling that captures all dust sources takes place across a 28–32-day sampling period.
- Not all dust is attributable to operations; for example: one of the spikes coincides with a significant statewide dust storm.
- This type of sampling allows the team to detect any longer-term changes and trends.
- The Mt Piper gauge reading was high due to road works on the entry road when the culvert was being replaced.
- Noise monitoring for LNAR was undertaken early in 2025. The results across reporting period complied with approval conditions.
- *Rob White asked about the longevity of the lining.*
- Jonathan responded that the lining was designed for the life of the project.
- *Julie Favell asked if the lining process precluded future reuse of the ash.*
- Jonathan noted it was designed to enable reuse. Reuse would depend upon finding a compatible use for brine conditioned ash. Currently the ash that is recycled for use in concrete etc. is taken straight from the where the coal is burnt.
- *Julie Favell noted an error in the labelling of Nubecks Creek in the aerial image. Nubecks Creek is an ephemeral creek, and the water course indicated is actually Wangcol Creek.*

Mt Piper Stack Emissions (See slide 32 to 35)

Ben noted the following:

- The station is performing well. Unit 1 and Unit 2 levels for NOx and SOx are well below limits.
- Particulate matter is continually monitored. The limit is 50 mg per cubic metre, and Mt Piper is presently running at only 10 mg per cubic metre.
- Mercury is monitored and is showing levels well below the required limit
- Emissions are monitored via a probe within the stack. Continuous monitoring allows the team to track environmental performance in real time in relation to how the generation units are operating.

National Greenhouse and Energy Reporting Scheme (See slide 37 to 39)

Ben noted the following:

- Mt Piper is running at about 6 million tonnes of CO2 (Scope 1 emissions).
- The rate of CO2 produced is consistent with the amount of energy produced.
- At a portfolio level EnergyAustralia is third in the top ten emitters in Australia.
- Mt Piper is 9th in terms of emissions intensity amongst the top 20 largest electricity generators within Australia.

Thompsons Creek Biodiversity Offset Area Reporting (See slides 41 and 42)

Ben noted the following:

- Management of this area such as planting and thinning is guided by Biodiversity Trust.
- Monitoring is demonstrating good survival rates for trees and plants, and good results from nesting box surveys.
- 13 wombat burrows were found in this area and have now been fitted with mange treatment flaps.
- Nesting boxes being used by possums and squirrel gliders.
- The offset is for the LNAR disturbance area.
- Future work in this area will include ongoing planting and maintenance.

1 Environmental Planning Approvals (see slides 45 and 46)

Jonathan noted the following updates on the status of various planning applications across the current project portfolio:

- Lake Lyell Pumped Hydro – the EIS is being finalised.
-

Item	Discussion Point
	<ul style="list-style-type: none"> • Mt Piper Mod 10 for the coal settling pond. The response to the submissions report is being prepared, following the conclusion of exhibition in November 2025. The project will increase size of the pond to better manage run off from coal stockpile area and create some additional stormwater around north of station to isolate water flow from the station and stockpile area. • <i>Rob White asked about the geotechnical study for Lake Lyell.</i> • Cath responded that there is a modification request to the existing DA consent for 6 additional boreholes to be drilled to assess soil conditions in areas where design changes have been made.

4 Operations update – MPPS (see slides 48 & 55)

Some slides have been redacted due to confidentiality. Only high-level discussion points are reported below.

Jonathan noted the following updates on the station operations:

- Mt Piper is generating close to 15% of NSW power needs
 - Workforce stands at 189 people including 20 apprentices
 - This year the station had planned to take 3 new apprentices but is now looking at 5 apprentices in total reflecting the different skills that are needed as the energy sector is transitioning.
 - Safety YTD is good although we assess all incidents so we can learn from them and do better.
 - Next year we will introduce a new safety initiative called AERO that helps us identify where we make errors that can lead to safety issues.
 - Market demand is stable. The generation output pattern is quite predictable. High across winter, lower in spring and autumn. Summer however is quite volatile while demand is generally low during hot days it can spike considerably.
 - Coal supply is good in terms of quality and volume.
 - *Julie asked about the Springvale long wall move and diversity of supply.*
 - Jonathan noted that the quality of coal has been consistent following the move. Trickle in deliveries are also good quality and truck deliveries are coming in from Castlereagh which has approval to operate through to 2030.
 - MP Unit 1 is performing well.
 - MP Unit 2 is working well but will be subject to some planned outages for pre-emptive works.
 - Outside of planned outages and servicing, the units have about 99% availability.
 - Both units can operate flexibly between low load and full output. Low load is good for when there is a surplus of solar or wind energy in the system and overall demand is low.
-

Item	Discussion Point
------	------------------

- The recent outage was very complex and successfully delivered on time and on budget.
- Again, this year the station workforce has demonstrated operational excellence, and people are proud to work here.
- We are working with the asset and maintenance teams to restructure the workforce to be able to better support changing station operations and the energy transition. Everyone is looking forward to the station playing its role alongside the BESS and pumped hydro.
- Staff asked to place the old blue train (that was used for open days at Wallerawang Power Station) at the front of the station and tied this in with the Blue Tree suicide prevention initiative.
- EnergyAustralia is continuing to minimise brine waste from dewatering operations and recently hosted the regulator on site to work through some changes in dewatering operations.
- *Julie Favell asked about timing to complete capping of ash repository.*
- Jonathan noted completion is scheduled for mid-2026.
- *Julie commented that while the capping is a good measure, the groundwater impacts from the leaching repository would continue for some time into the future.*

6	Project Updates: Mt Piper BESS (see slides 56 to 58)
---	---

Cath Russell noted:

- BESS was successful in receiving funding through the Capacity Investment Scheme.
 - The benefits scheme for BESS is likely to include:
 - VPA with council
 - Rural fire support
 - Community battery grants for up to five local organisations
 - Local employment commitments
 - STEM program for schools
 - Capacity building for local suppliers
 - Women in construction initiatives
 - The benefits scheme would run across construction and into the first five years of operation.
 - This was a strong package of benefits and some of the proposals will still need further discussions with stakeholders.
 - *Rob White asked about the \$4M mentioned at the previous meeting.*
 - Cath responded that this \$4M was for First Nations initiatives and in addition to the \$2.4M.
 - *Julie asked how many community batteries were proposed.*
 - Cath said the funding would cover up to 5 batteries for not-for-profit organisations that serve local communities.
-

Item	Discussion Point
------	------------------

- Matt Bruers outlined the timeline for the next steps in the battery project:
 - Currently working through interface with the Transgrid substation
 - Funding – the financial investment decision to proceed will be made later next year.
 - Pending the financial investment decision by the board – construction is likely to commence in 2027 and operation in 2029.
 - Stage 1 will be for 250 MW of battery storage. Each stage is estimated to cost around \$500M
 - Construction is reasonably straightforward as the BESS is comprised of modular container sized batteries that are brought onto site.

Project Update: Lake Lyell Pumped Hydro Study (see slides 59 to 63)

Cath provided an update on the EIS noting:

- Across October and November, the team undertook engagement through outreach, Project HQ and briefings.
 - Consultation showed around 71% awareness of the project and that of these people 65% supported the project.
 - Key issues raised included:
 - Biodiversity – particularly the platypus
 - Recreation and water
 - Workers' accommodation
 - Visual impacts
 - Economic impacts
 - Consultation
 - Neighbour benefits
 - Cultural
 - Traffic and roads
 - How pumped hydro works
 - Construction
 - *Rob White commented the key issues identified seemed similar to what CLC had heard.*
 - *Rob disputed the 65% support figure and asked how this figure was determined.*
 - Cath responded sentiment was assessed through a "dotmocracy" exercise and the figure needs to be taken with "a grain of salt" as it represents only those that provided feedback in October and November 2025.
 - Jonathan added that the figure was an outcome of the engagement work the team did and the two figures were separate data points.
 - Brian Fitzgerald noted his support for the project stating that more power is needed.
 - *Rob stated that the figure of 65% that supported the project and was publicised, was a misleading, statistically invalid value and involved a self-selecting sample.*
-

Item	Discussion Point
------	------------------

- *Councillor Smith agreed with Rob that the figure was wrong and should not have been put out to the public.*
- The EIS is due to be submitted early next year. After adequacy review it will be placed on exhibition for a minimum of 28 days. Exhibition timing and duration is at the discretion of DPHI.
- To support the exhibition process, the HQ will be open, and a copy of the EIS will be available at HQ and Lithgow Library. Two copies will also be available for use during outreach activities.
- *Julie Favell asked if EnergyAustralia could look at making copies available on USBs so that CCC members didn't incur data costs.*
- *Clr Smith asked why nearby neighbours were not consulted over October and November engagement. He noted that most neighbours have not seen anybody from the project in 12 months. They have questions and have been provided with no answers. This includes one community member who wants an immediate resolution, but no one has been in touch with him. He noted that Michael De Vink previously said the team would be in contact with neighbours.*
- Cath responded that nearby neighbours were not targeted in this recent round of engagement. Previous feedback from this group was that they want to discuss agreements when they had access to the EIS exhibition materials and when they are able to view the technical reports. This way they can make an informed decision about their agreement. Cath noted that the team is available if anyone wants to meet.
- *Rob White asked for a response to the questions from the fishing community that he had passed onto the project team. He said that Michael De Vink has said that there would be a response to these questions at the CCC meeting.*
- Cath noted she would forward the response to Rob in the next day.
- The Chair asked that if questions were to be subject to response via the CCC this needs to be explicitly requested.

Updates: Lithgow Community

- Cath announced the following recipients for 2025 Round 2 community grants:
 - Cullen Bullen Public school
 - Lithgow Cares committee
 - Rydal Recreation Reserve
- Community highlights were outlined as per slide 66 and 67.

Other business

- There was no other business

8

Meeting close

- The meeting closed at 7.00 pm.
 - The next meeting is likely to be in February and include a site tour of the ash repository and BESS site.
-

Item	Discussion Point
	<ul style="list-style-type: none"> • The Chair noted there may be another extraordinary meeting early next year to coincide with the exhibition of the Lake Lyell Pumped Hydro application. • The Chair thanked members for their participation and wished members the best for the holiday season.

EnergyAustralia Lithgow Region

Community Consultative Committee

9 December 2025

Presenter: Jonathon English – Head of Mt Piper



EnergyAustralia
LIGHT THE WAY

Agenda

1. Welcome – Acknowledgement of Country – Declarations of Interest
2. Minutes and Actions
3. Environmental Monitoring and Performance 2025
4. Operations and Project Updates
 - Mt Piper Power Station
 - Mt Piper BESS
 - Lake Lyell Pumped Hydro
 - Lithgow Community
5. General Discussion
6. Meeting Close

Acknowledgement of Country

We would like to acknowledge the Wiradjuri people as the Traditional Owners of the land on which we meet today, and recognise and respect their connection to culture, land and unity.

We pay our respect to their Elders past, present and emerging.



Artwork by Wiradjuri Elder and Mingaan Wiradjuri Aboriginal Corporation
representative Aunty Sharon Riley

Declarations of Interest

2. Minutes and actions

Standing Item 1 –Wombat Mange Program

Wombat Management Program

CCC requested an update be provided on a regular basis

May 2025 to September 2025

- Survey to identify active Wombat burrows at TCR and MPPS
- 16 Mange treatment flaps installed (13 TCR, 3 MPPS)
- Active monitoring & mange treatment refills every 2 to 4 weeks
- Trail cameras were used to observe activity and effectiveness

Current activities

- MPPS Environment Team members are undertaking training for Treating Wombats with Sarcoptic Mange
- MPPS Environment Team to manage the Wombat Treatment Program – Dosing, Monitoring & Recording



Question on Notice 1

Raised by Julie Favell

- Remediation of Wangcol Creek wetland including provision of boardwalks and visitor facilities. Julie asked that this be retained on the agenda, initially raised 8 August 2025 meeting.

Response

EnergyAustralia is actively working to reduce leachate contamination of Wangcol Creek through improved water management at the Mt Piper Ash Repository. This remains a priority for the site.

We're committed to rehabilitating Pine Dale Mine land in accordance with approved rehabilitation plans. This includes sections along Wangcol Creek where remediation work will be undertaken as part of the broader rehabilitation program.

For Wangcol Creek wetland upgrades beyond our operational boundary, we're exploring what role EnergyAustralia might play in supporting broader remediation efforts in collaboration with relevant landowners and stakeholders.

Question on Notice 2

Raised by Julie Favell

- When will EA/MPPS submit a development application to reduce emission with a battery/s charged with renewable energy only (potentially supplied with EnergyAustralia's current PPAs) to suffice the Mt Piper Power station operational electricity usage. It shows the public/community the company is leading by example reducing local emissions and the transition away from fossil fuels.

Response

EnergyAustralia is committed to supporting Australia's energy transition while maintaining reliable, affordable energy for our customers.

Mt Piper Power Station may transition to a reserve role in the early to mid-2030s to support system stability, with retirement by 2040. The station will continue to operate safely and reliably, meeting all environmental obligations while providing flexible generation as renewable energy grows.

EnergyAustralia is actively investing in renewable energy and storage projects in the region, including the Mt Piper Battery Energy Storage System and the Lake Lyell Pumped Hydro project. These projects will support the transition to cleaner energy while creating local jobs and economic benefits.

Question on Notice 3

Raised by Rob White

Mt Piper BESS Project Community Benefits Scheme

- Who are the four local Indigenous groups that EnergyAustralia has referred to?
- Who are the designated contact points for each of these groups?

Response

- Barrinang Aboriginal Corporation – Rick Slaven
- Bathurst Aboriginal Land Council - Cr Leeanne Hampton
- One Mob Aboriginal Corporation – Brandon Sutherland
- Mingaan Wiradjuri Aboriginal Corporation – Aunty Sharon Riley

**Also Registered Aboriginal Parties for cultural heritage studies*

3. Environmental Monitoring & Performance 2025

3.1 Water Access Licence (WAL)

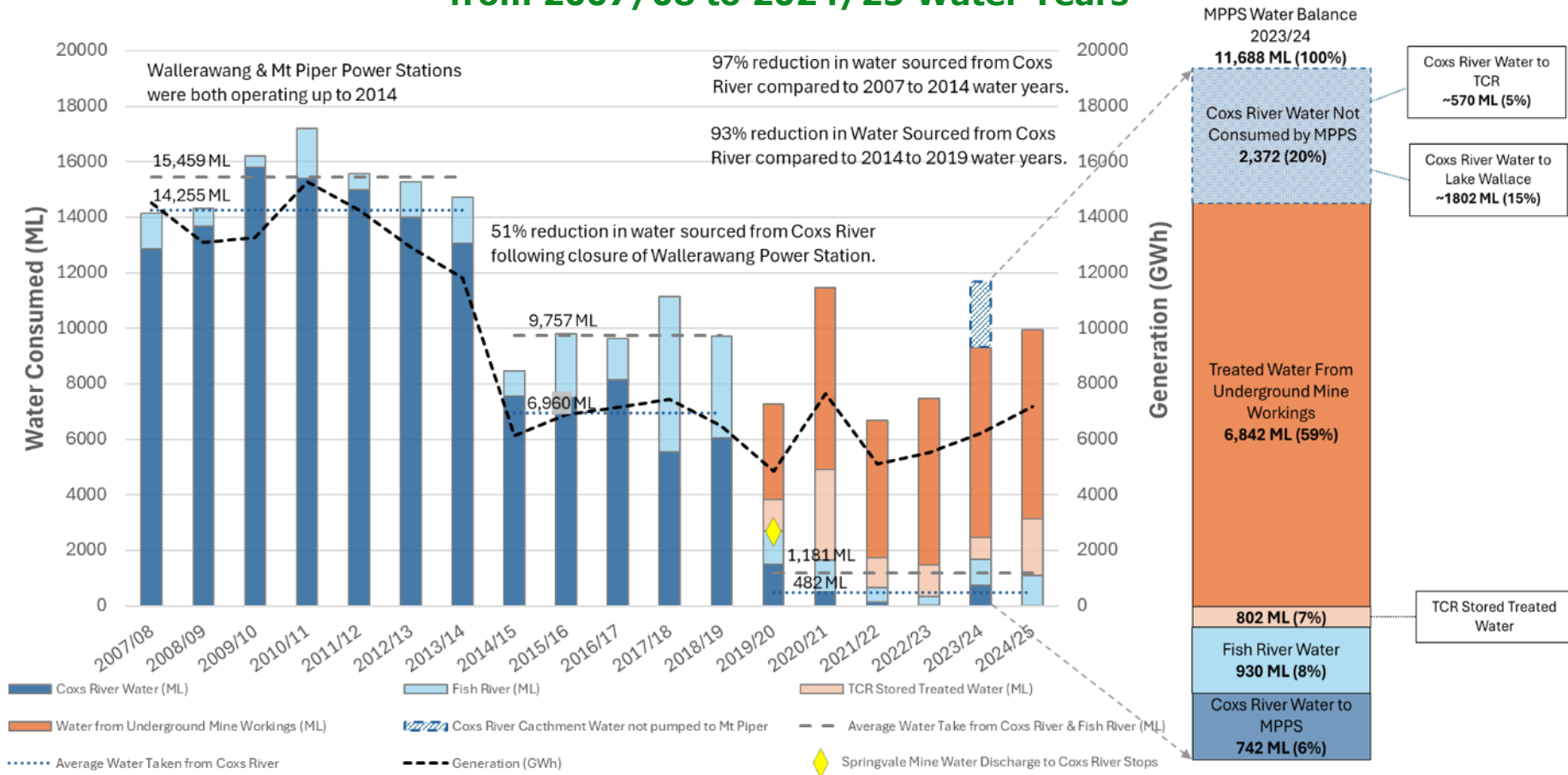
Annual Compliance Report
July 2024 to June 2025

MPPS Makeup Water & Use 2024/2025

- **9,964.0 ML** water brought into MPPS for power generation (Make-Up water)
- **81%** of the Make-up water at MPPS was Treated Water
- **1,100.8 ML** was sourced from Coxs River and Fish River water sources

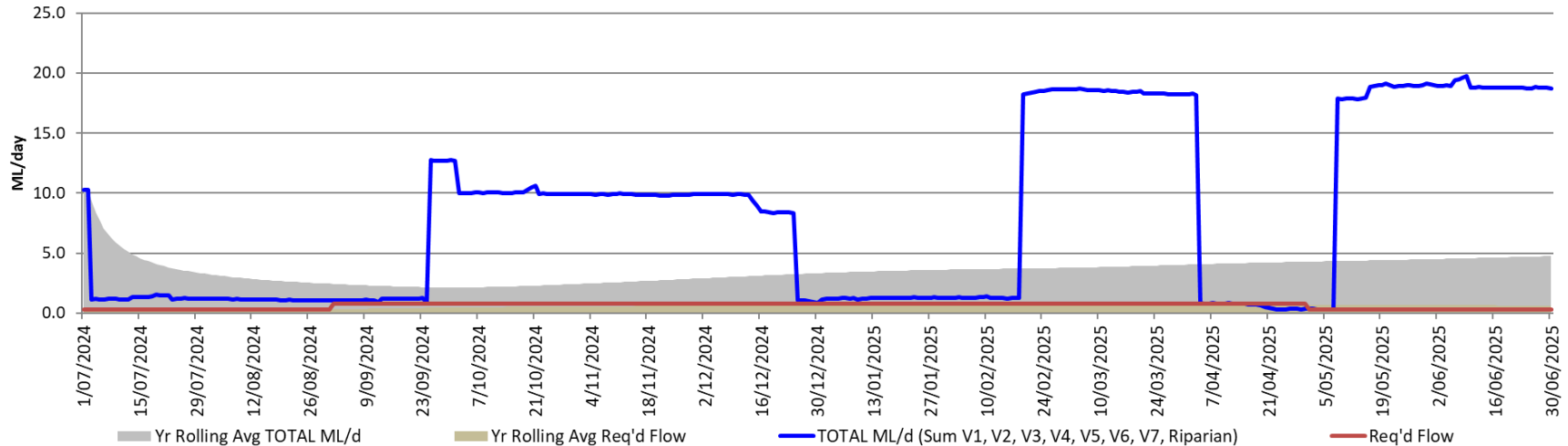
	Coxs River Water	TCR Stored Treated Water	Fish River Water	SWTP Treated Water	Angus Place Mine Water	Monthly Make-up Water	Daily Average Make-up Water Use	Recycled Water - CW Pond	Total Water Consumed
Month	(ML)	(ML)	(ML)	(ML)	(ML)	(ML)	(ML/day)	(ML)	(ML)
Jul 2024	0.0	192.6	14.0	634.4	81.2	922.2	29.7	218.2	1,140.4
Aug 2024	0.0	122.9	18.0	793.6	78.4	1,012.9	32.7	230.3	1,243.2
Sep 2024	0.0	51.0	12.2	469.1	79.1	611.4	20.3	228.5	839.9
Oct 2024	0.0	63.3	20.3	537.4	69.2	690.2	22.3	214.1	904.3
Nov 2024	1.1	317.5	19.6	707.0	76.2	1,121.4	37.4	193.2	1,314.6
Dec 2024	0.0	147.0	20.1	799.4	74.0	1,040.5	33.6	252.1	1,292.6
Jan 2025	0.0	672.2	162.4	0.0	64.8	899.4	29.1	227.6	1,127.0
Feb 2025	0.0	228.9	197.3	418.1	7.7	852.0	30.4	155.6	1,007.6
Mar 2025	0.0	104.5	263.4	604.8	79.0	1,051.7	33.9	186.6	1,238.3
Apr 2025	0.2	19.7	75.8	7.3	1.7	104.7	3.5	26.0	130.7
May 2025	0.6	47.3	116.6	385.0	66.3	615.8	19.9	215.2	831.0
Jun 2025	0.0	77.9	179.1	707.0	77.8	1,041.8	34.8	226.3	1,268.1
2024 – 25	1.9	2,042.8	1,098.9	6,063.1	755.4	9,964.0	27.3	2,373.7	12,337.7

Water Consumed and Water Sources for Power Generation at Mt Piper Power Station from 2007/08 to 2024/25 Water Years



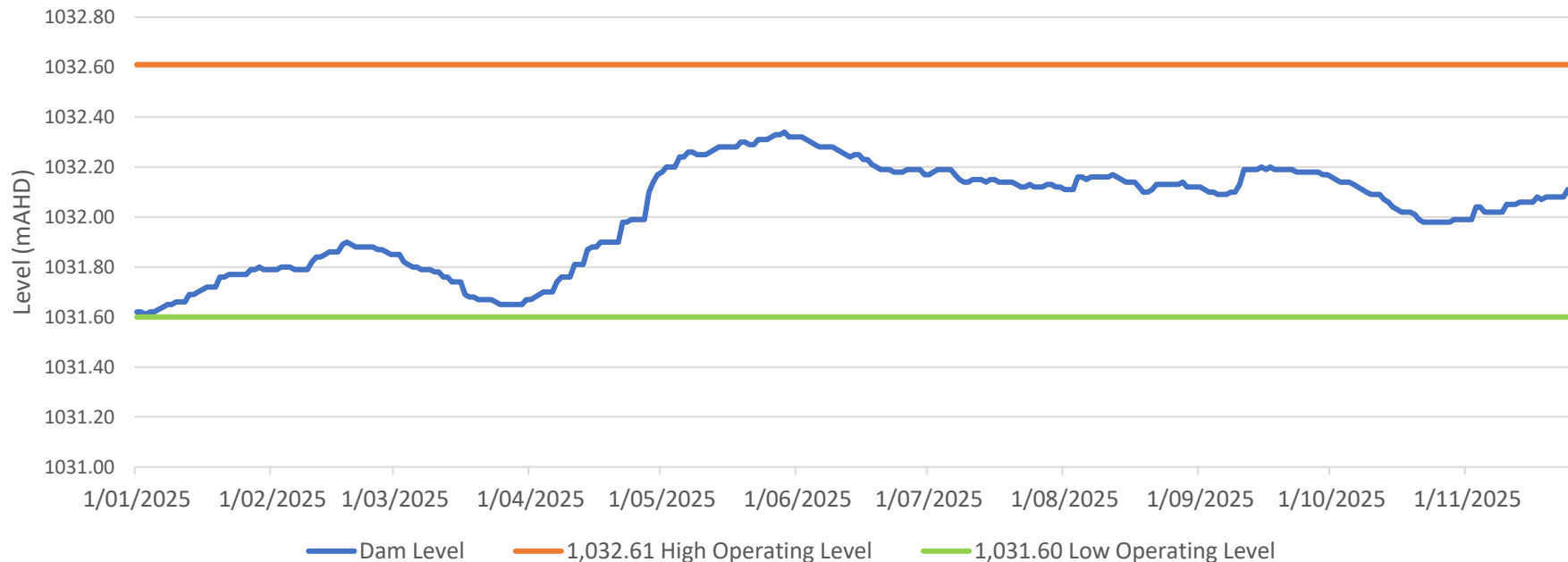
Thompsons Creek Reservoir Riparian Releases

Date	Required Release	Average Release
01 July 2024 to 31 August 2025	0.3	1.47
01 Sept 2024 to 30 April 2025	0.8	7.57
01 May 2025 to 30 June 2025	0.3	16.65



Thompsons Creek Reservoir

Water level 2025 (mAHD)



3.2 Mt Piper Ash Repository(MPAR)

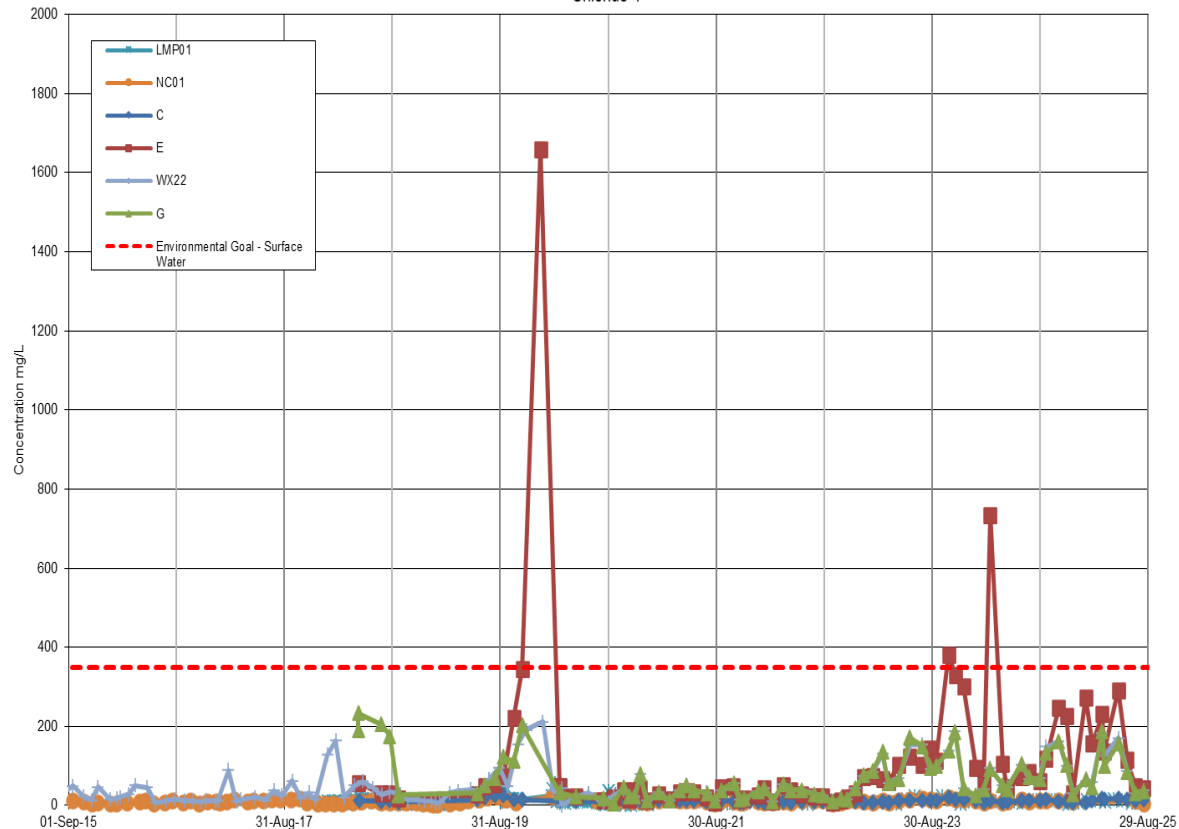
Water Quality

MPAR Surface Water



MPAR Surface Water

Chloride-T

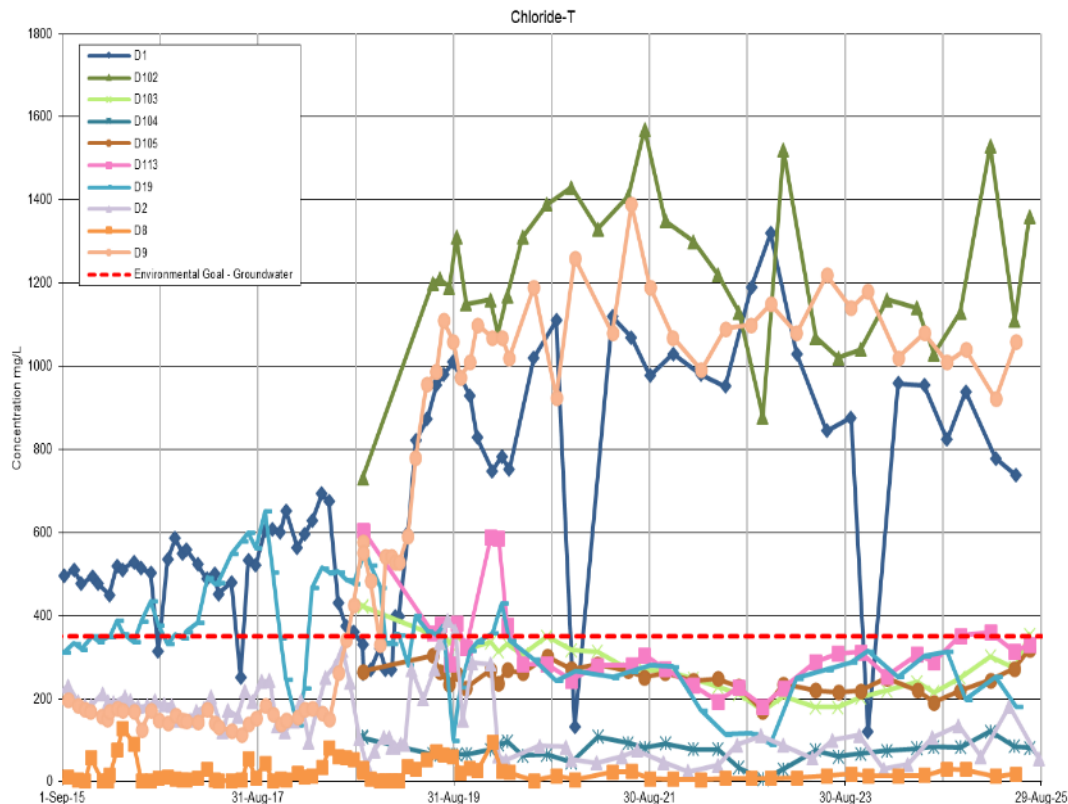


- Chloride concentration for all the monitoring location remained below the Environmental Goal throughout the reporting period.

MPAR Groundwater



MPAR Groundwater



- Chloride concentrations were consistently above the Environmental Goal in groundwater for most of the bores
- Despite these exceedances, chloride levels remained within historical ranges across all wells
- No new source of chloride contamination, but continued monitoring is recommended to track any future changes

3.3 Lamberts North Ash Repository (LNAR)

Annual Operating Compliance Report 2024-25

Lamberts North Ash Repository (LNAR)



Photo 1: Aerial view of Lamberts north Ash Repository showing LNAR Stage 1 (A and B) and LNAR Stage 2(A and B) areas, MPAR is in the background (Photo taken 18 February 2025)

Lamberts North Ash Repository (LNAR)

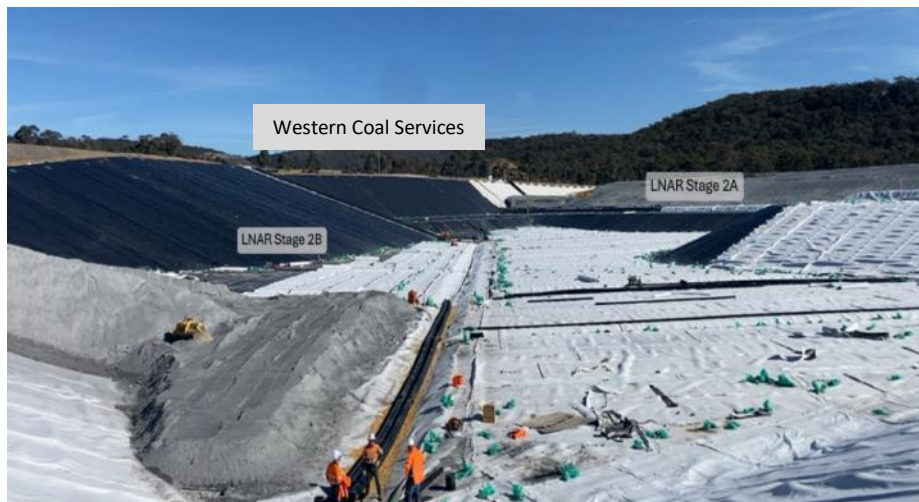


Photo 2: Installation of Geofabric in LNAR Stage 2A and Stage 2B areas (May 2025)



Photo 3: Installation of Liner at LNAR Stage 2B (April 2025)

Lamberts North Ash Repository (LNAR)

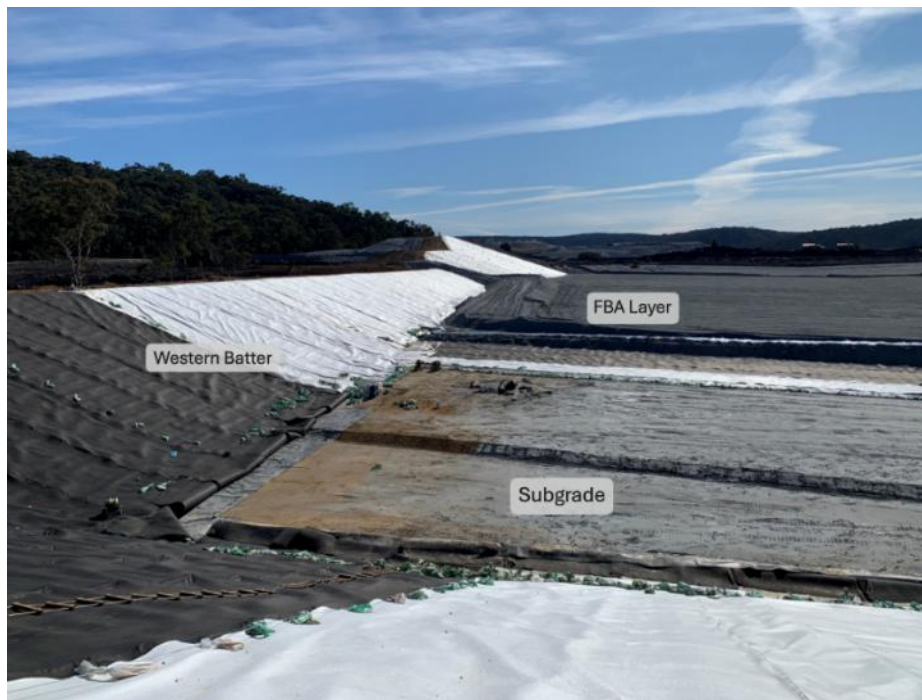
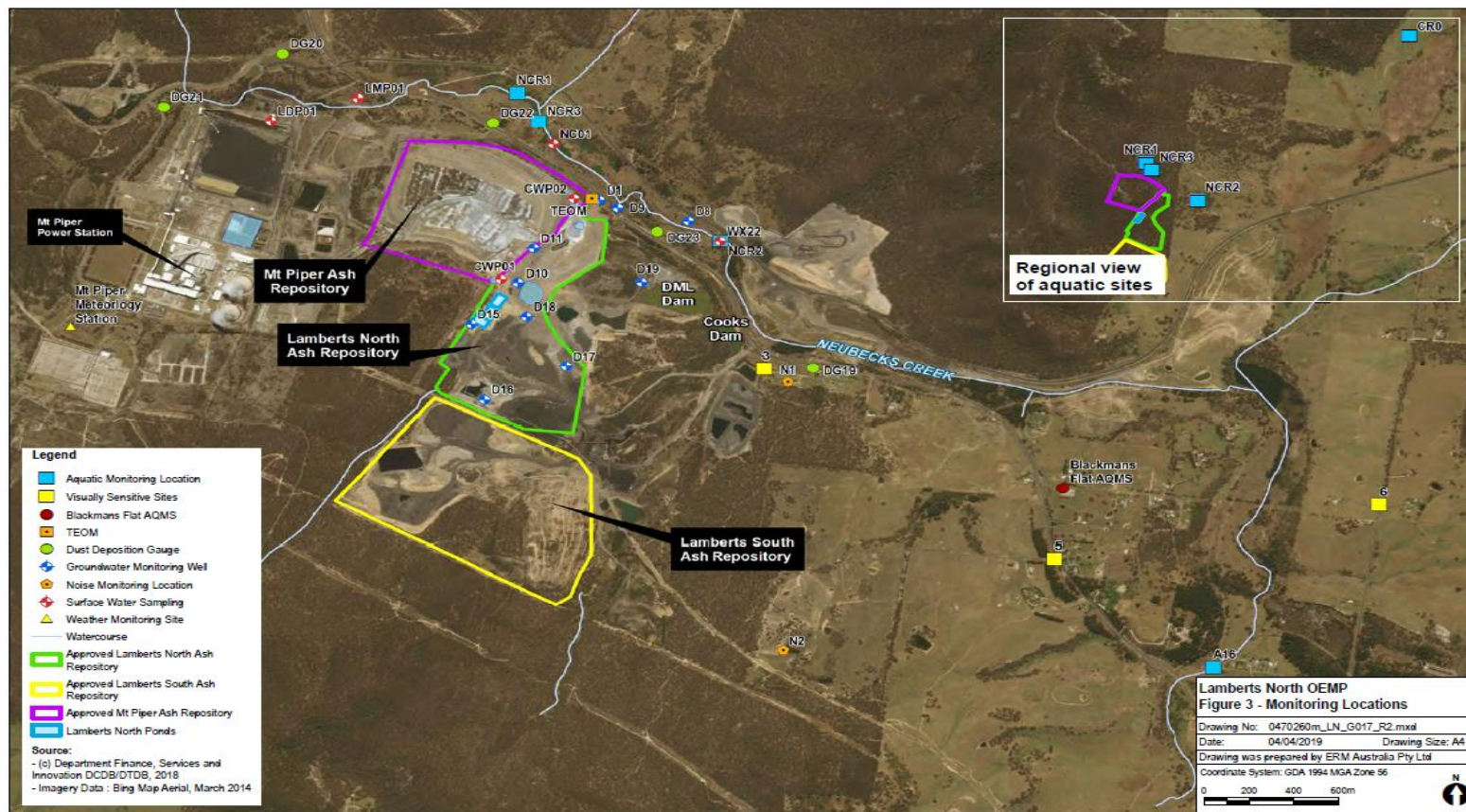


Photo 4: LNAR Stage 2 Set-up (February 2025)

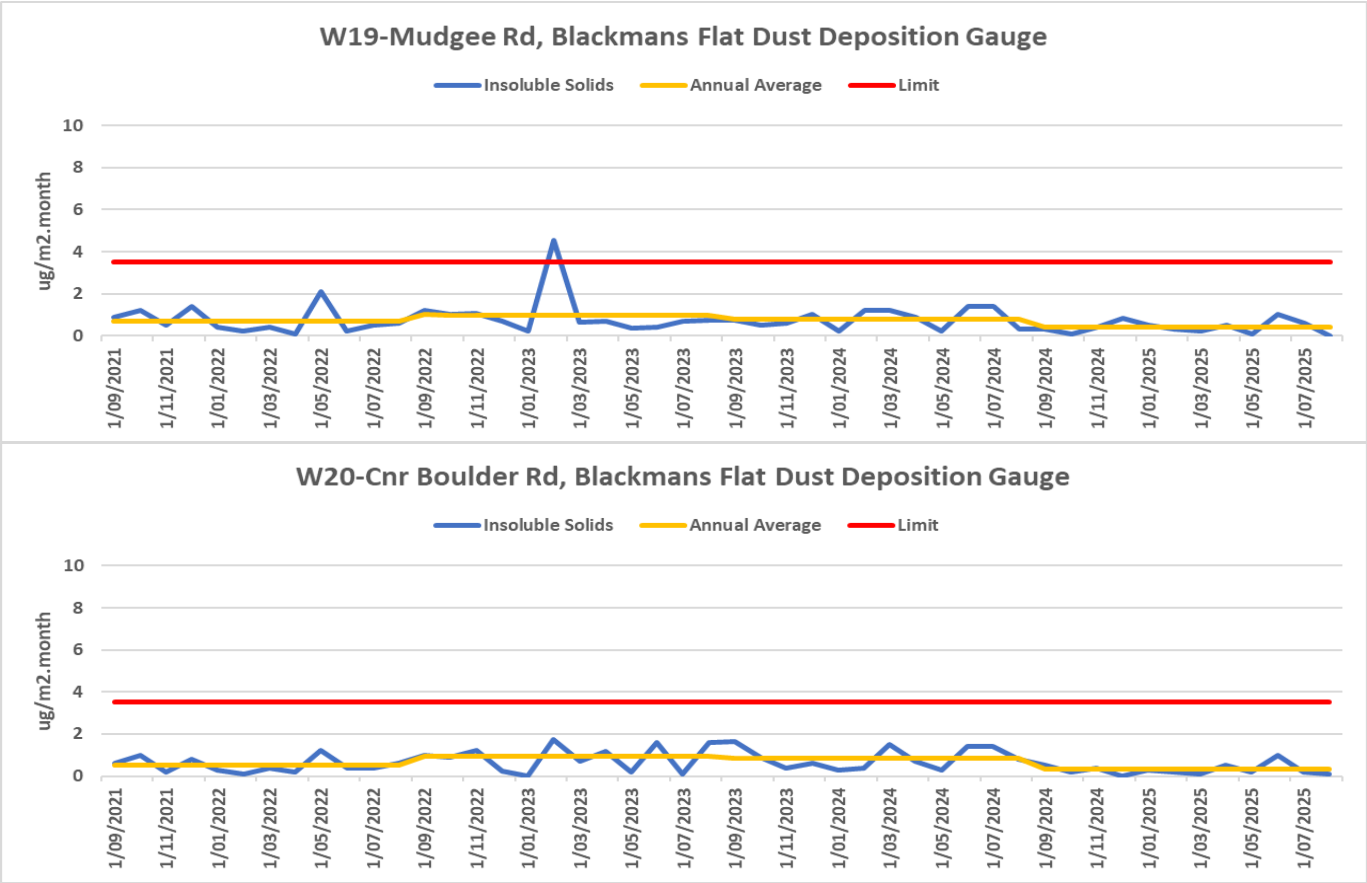


Photo 5: Engineered Leachate Barrier Management System showing the multiple layers in its design (February 2024)

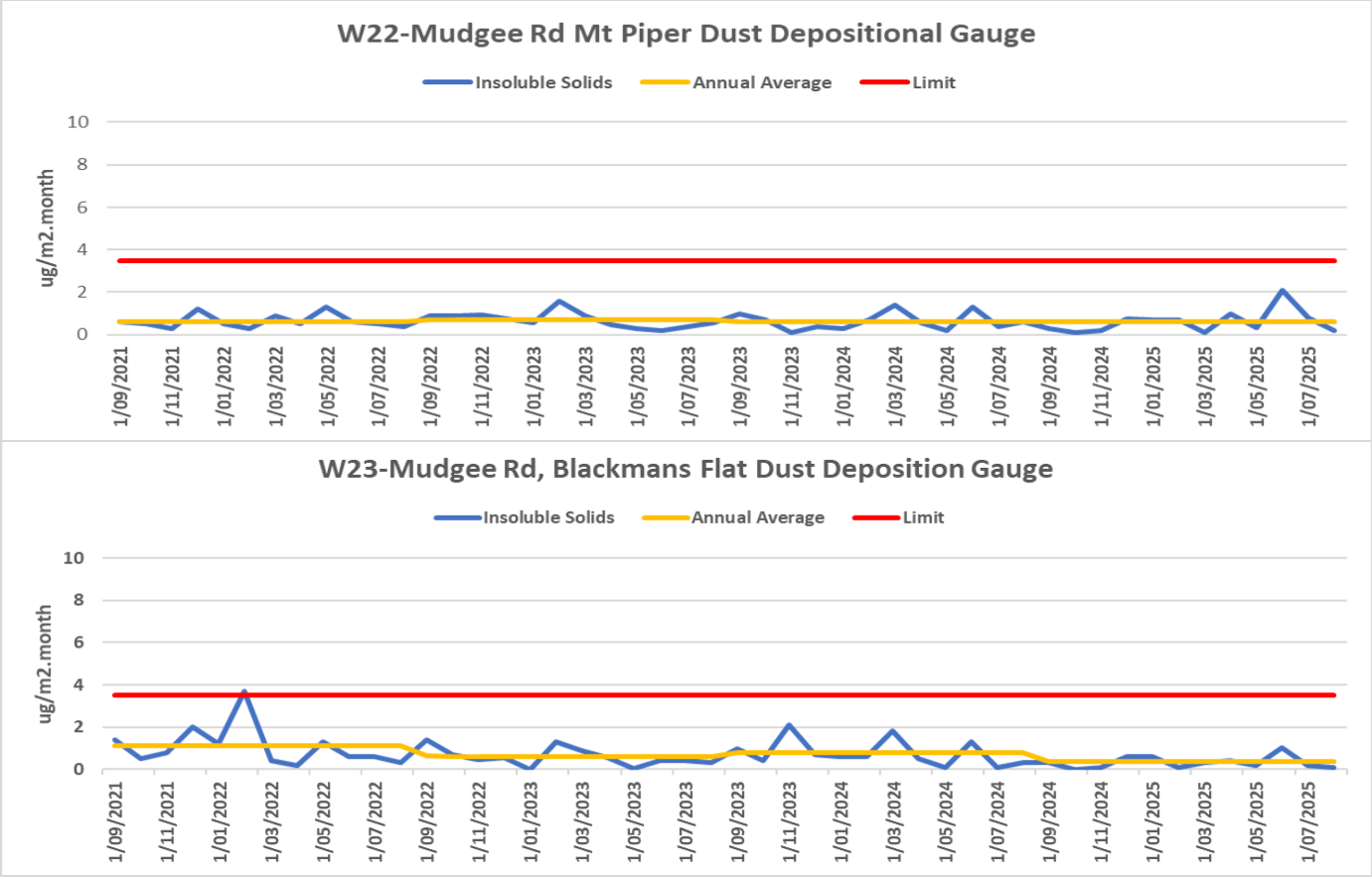
LNAR Monitoring Locations 2025



LNAR Air Quality Monitoring 2025

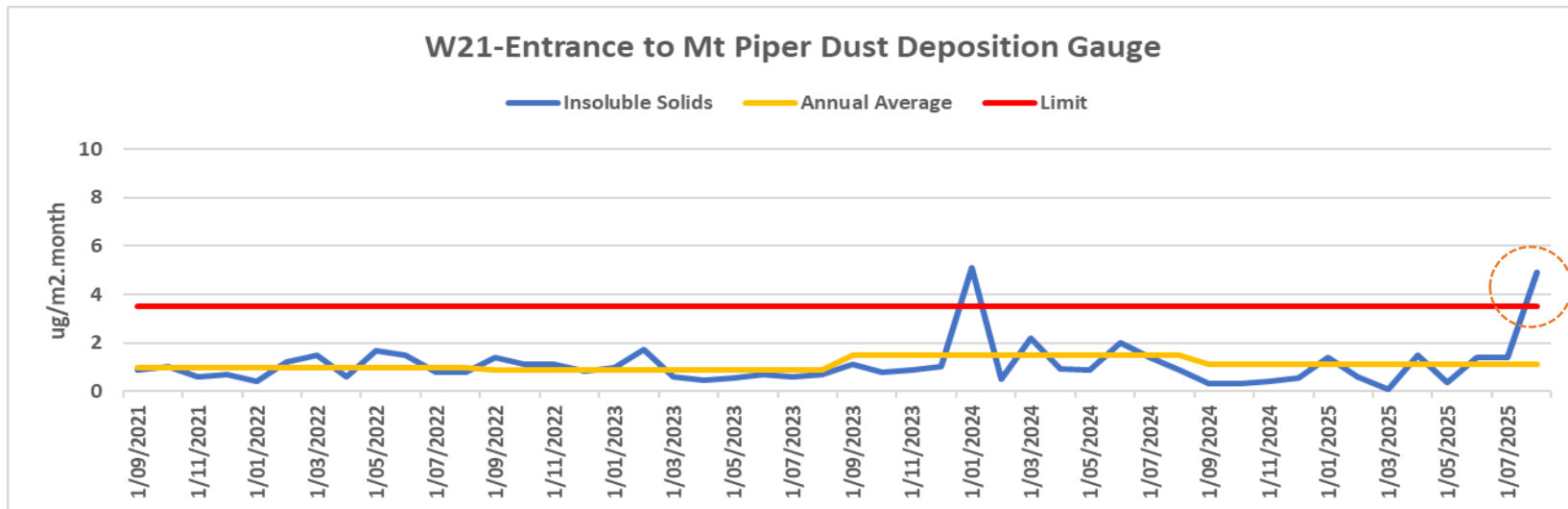


LNAR Air Quality Monitoring 2025

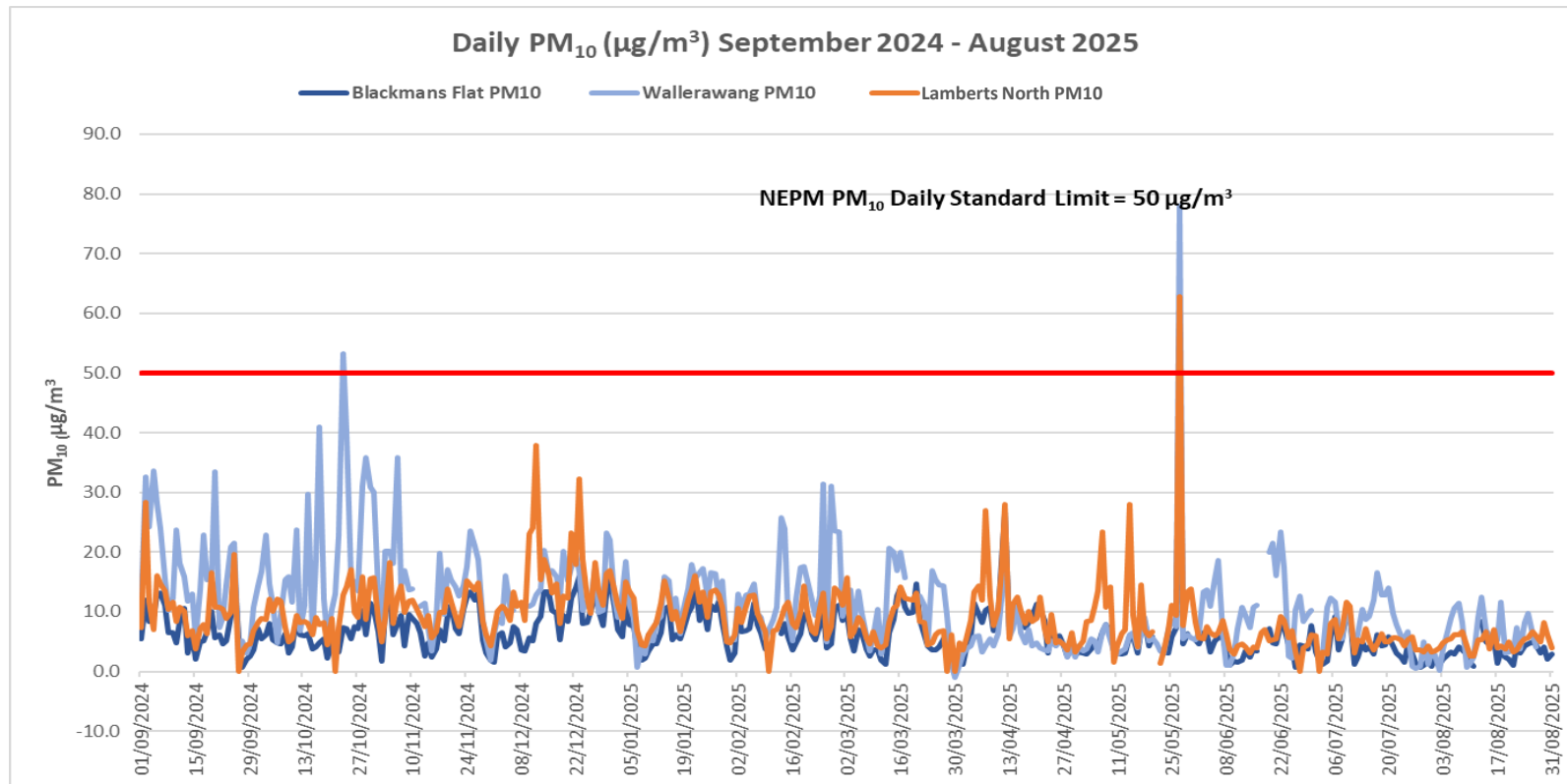


LNAR Air Quality Monitoring 2025

- Monitoring data reflects very good air quality in the area
- There is no evidence of a general deterioration in air quality caused by activities at LNAR
- There was a single, isolated, elevated peak in dust gauge D21 in August 2025 during the reporting period, likely a localised activity near the gauge caused this result



LNAR Air Quality Monitoring 2025



LNAR Noise Monitoring 2025

- The Annual Lamberts North Ash Repository noise monitoring was completed 10th April 2025
- Noise monitoring occurs at 2 sites “N1” Noon Street, Blackmans Flat and “N2” End of Karawartha Drive, Wallerawang
- Noise at N1 was inaudible during all the monitoring periods i.e. Day, Evening and Night
- Noise at N2 from the LNAR was occasionally audible at very low levels during the daytime monitoring period and inaudible during the Day and Night periods
- The operational noise monitoring was compliant with the LNAR project approval for the 2024 – 2025 reporting period

Location	Site limits, dB	Site limits, dB	Exceedances, dB
	L _{Aeq,15minute}	L _{Aeq,15minute}	L _{Aeq,15minute}
N1 - Day	42	IA	Nil
N1 - Evening	38	IA	Nil
N1 - Night	35	IA	Nil
N2 - Day	42	<20	Nil
N2 - Evening	38	IA	Nil
N2 - Night	35	IA	Nil

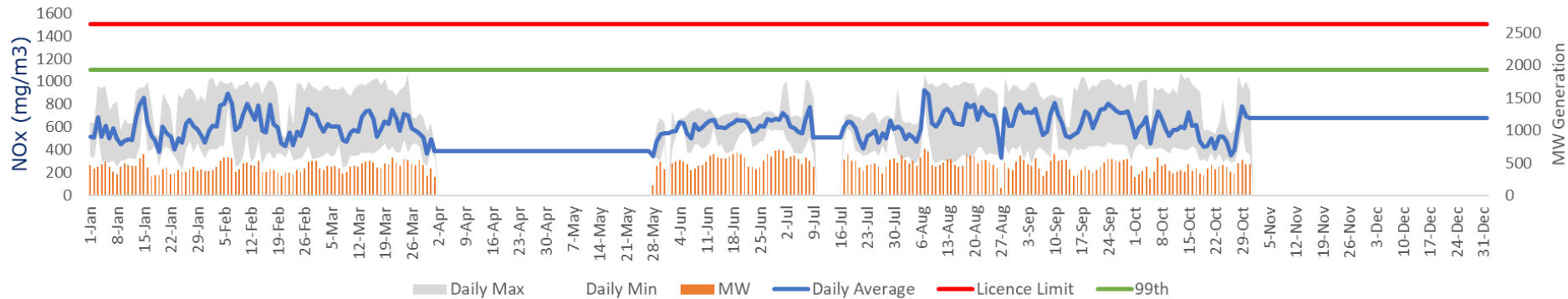
1. Site-only L_{Aeq,15minute} includes modifying factor penalties if applicable.

3.4 MPPS Stack Emissions 2025

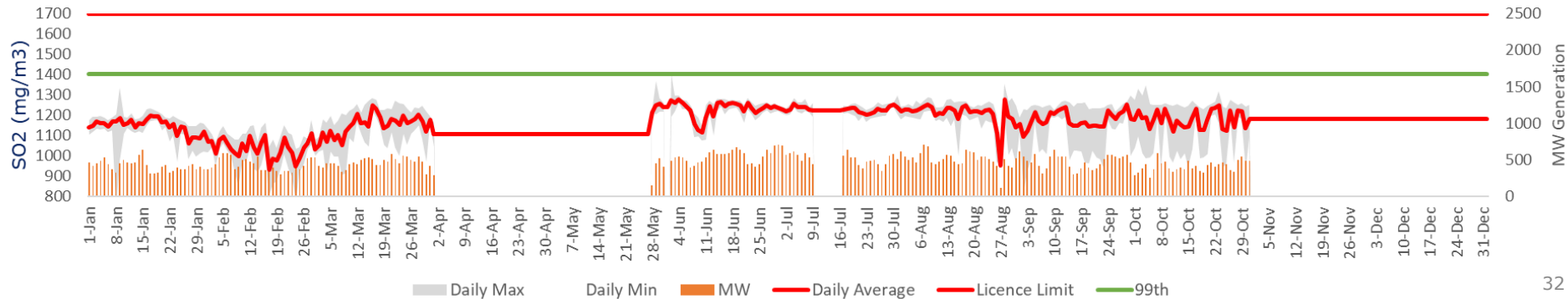
Environment Protection Licence
13007

Unit 1 – 2025 NOx & SO2

Mount Piper Licence Discharge Point 2 (Unit 1): Nitrogen Oxides (mg/m3)

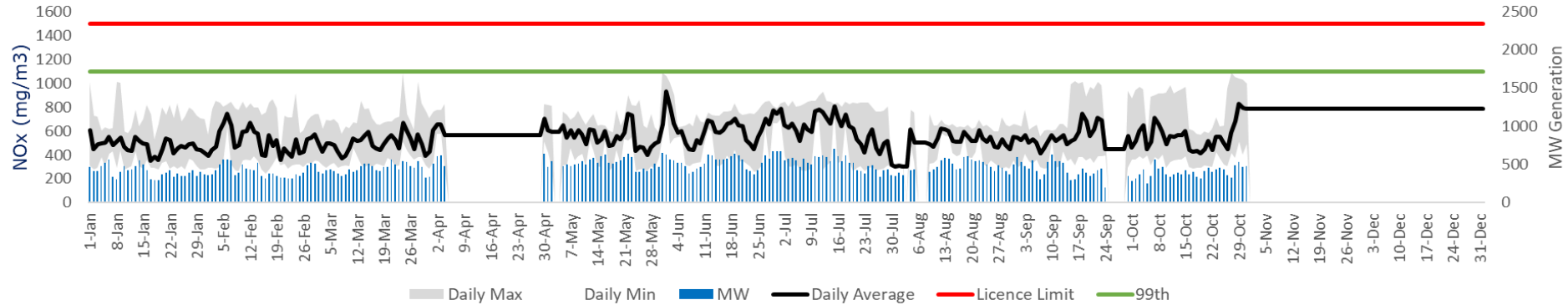


Mount Piper Licence Discharge Point 2 (Unit 1): Sulfur Dioxide (mg/m3)

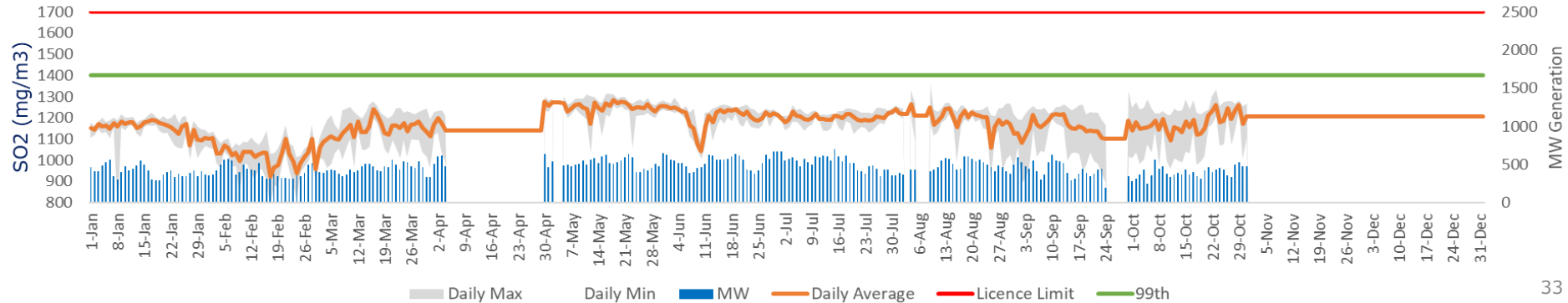


Unit 2 – 2025 NOx & SO2

Mount Piper Licence Discharge Point 3 (Unit 2): Nitrogen Oxides (mg/m3)

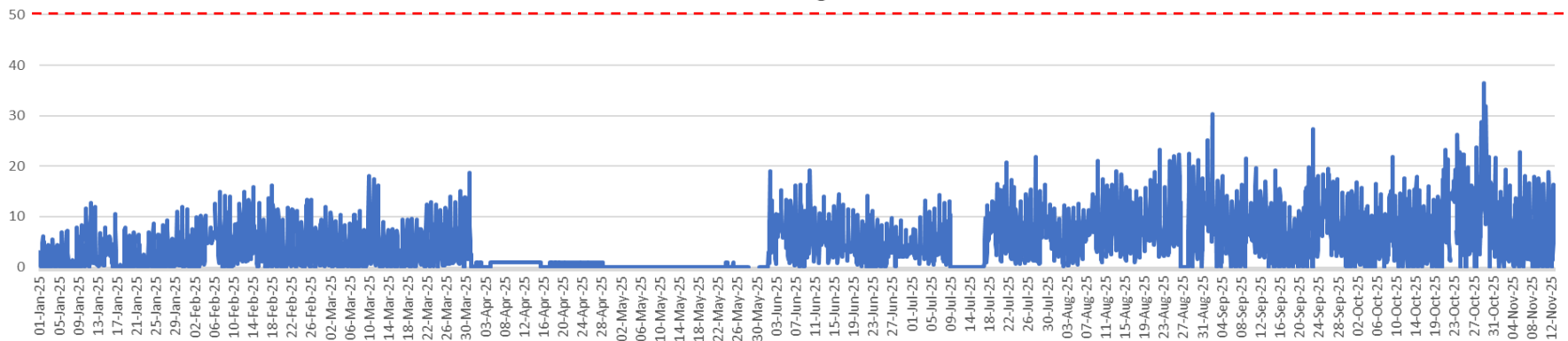


Mount Piper Licence Discharge Point 3 (Unit 2): Sulfur Dioxide (mg/m3)

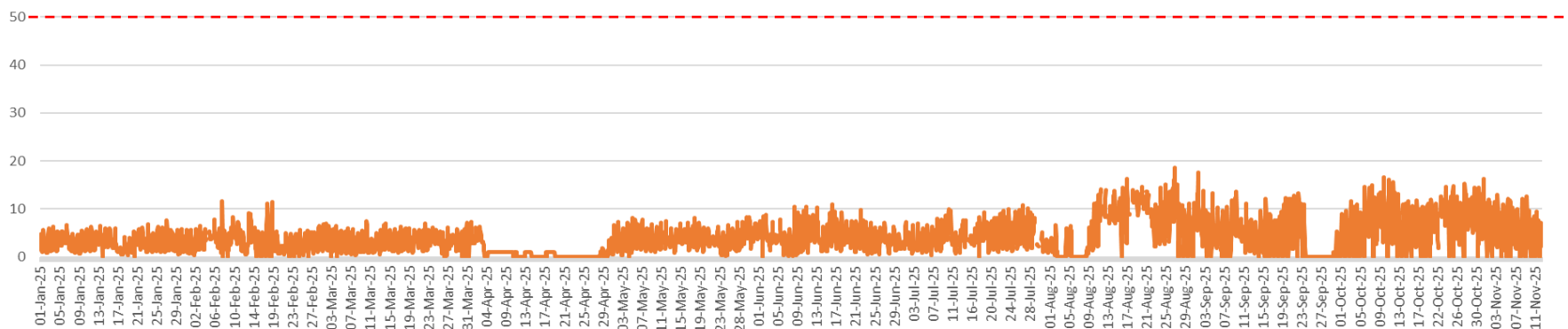


Particulate Matter - Continuous Emissions Monitoring

U1 Duct AB Average PM-CEMS



U2 Duct AB Average PM-CEMS



MPPS Stack Emissions 2025

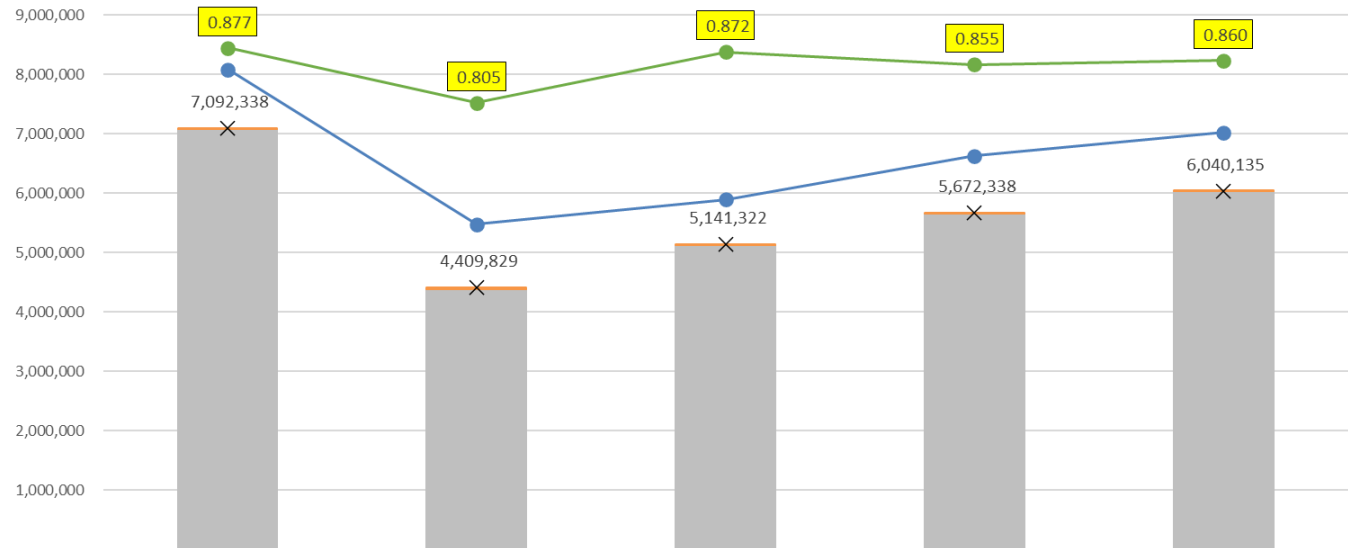
2025	No. of samples required by EPL per year	EPL Point	Samples taken (year to date)	Result				Limit	Compliant
				Q1	Q2	Q3	Q4		
Solid Particles (mg/m ³)	4	2	4	6.2	3.4	<4	<5	50	Yes
		3	4	4.3	4.7	2.6	<4		Yes

2025	No. of samples required by EPL per year	EPL Point	Samples taken (year to date)	Result		Limit	Compliant
				Jan - Jun	Jul - Dec		
Carbon Dioxide (%)	2	2	2	10.2	6.5	-	Yes
		3	2	11.9	6.9	-	Yes
Cadmium (mg/m ³)	2	2	2	<0.0002	0.00022	0.03	Yes
		3	2	<0.0002	0.00013		Yes
Mercury (mg/m ³)	2	2	2	0.0021	0.00018	0.03	Yes
		3	2	0.00077	<0.0003		Yes
Type 1 and Type 2 substances in aggregate (mg/m ³)	2	2	2	<0.03	≤0.03	0.60	Yes
		3	2	<0.03	≤0.02		Yes
Hydrogen Chloride (mg/m ³)	2	2	2	2.7	1.7	50	Yes
		3	2	2.6	2.6		Yes
Fluorine (mg/m ³)	2	2	2	10	3.5	30	Yes
		3	2	15	3.7		Yes
Chlorine (mg/m ³)	2	2	2	<0.03	<0.05	4	Yes
		3	2	<0.02	<0.06		Yes
Sulfuric Acid Mist and Sulfur Trioxide as SO ₃ (mg/m ³)	2	2	2	4.8	11	100	Yes
		3	2	2.2	9.3		Yes
Volatile Organic Compounds as n-propane equivalent (mg/m ³)	2	2	2	0.18	<0.1	8	Yes
		3	2	0.12	1.1		Yes

3.5 National Greenhouse & Energy Reporting Scheme (NGERS)

Mt Piper Greenhouse Gas & Energy Report 2021 - 2025

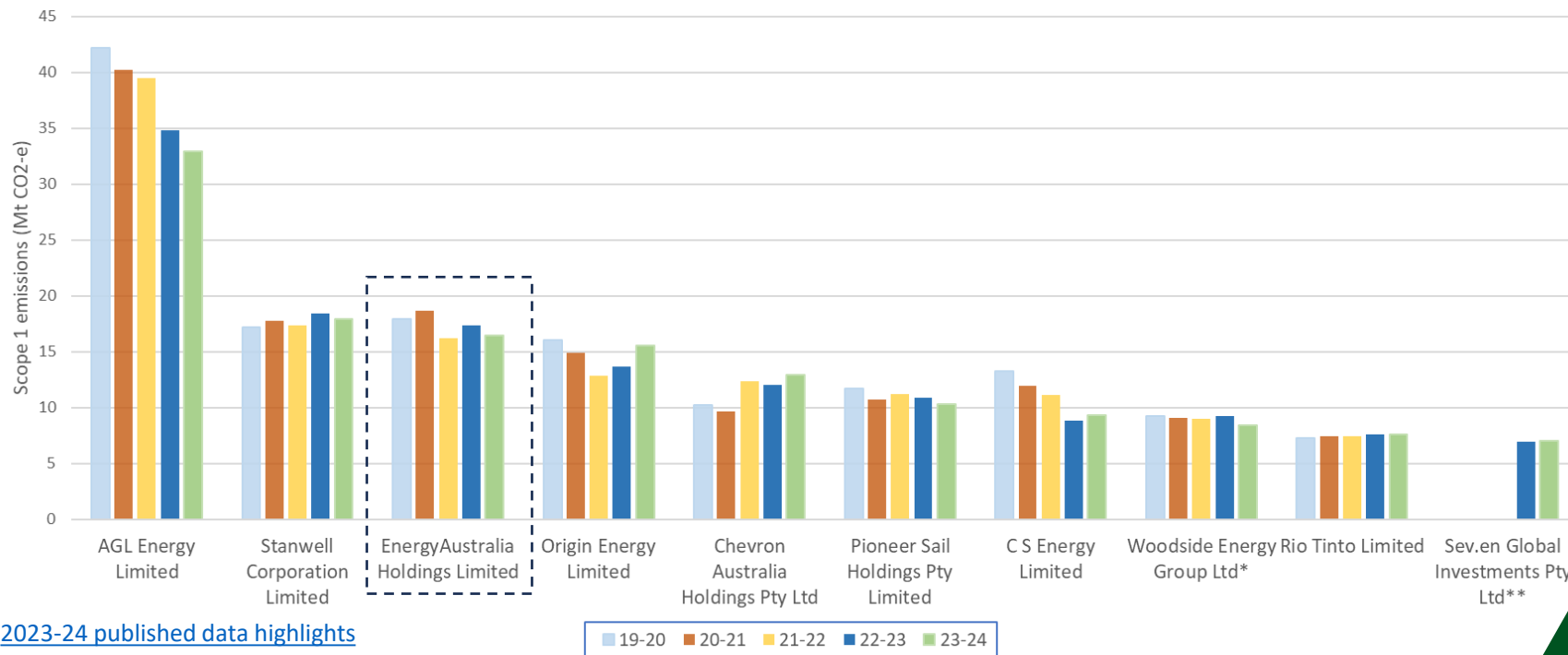
Graphical Trend analysis of five most recent financial years: 2020/21 - 2024/2025



	2020-21	2021-22	2022-23	2023-24	2024-25
Total scope 2 emissions (t CO2-e)	10,060	23,284	16,531	8,944	7,872
Total scope 1 emissions (t CO2-e)	7,082,278	4,386,545	5,124,791	5,663,394	6,032,263
Total energy produced (MWh)	8,085,766	5,475,212	5,896,325	6,633,318	7,020,510
Total scope 1 and scope 2 emissions (t CO2-e)	7,092,338	4,409,829	5,141,322	5,672,338	6,040,135
Emissions intensity of energy produced (t CO2-e / MWh)	0.877	0.805	0.872	0.855	0.860

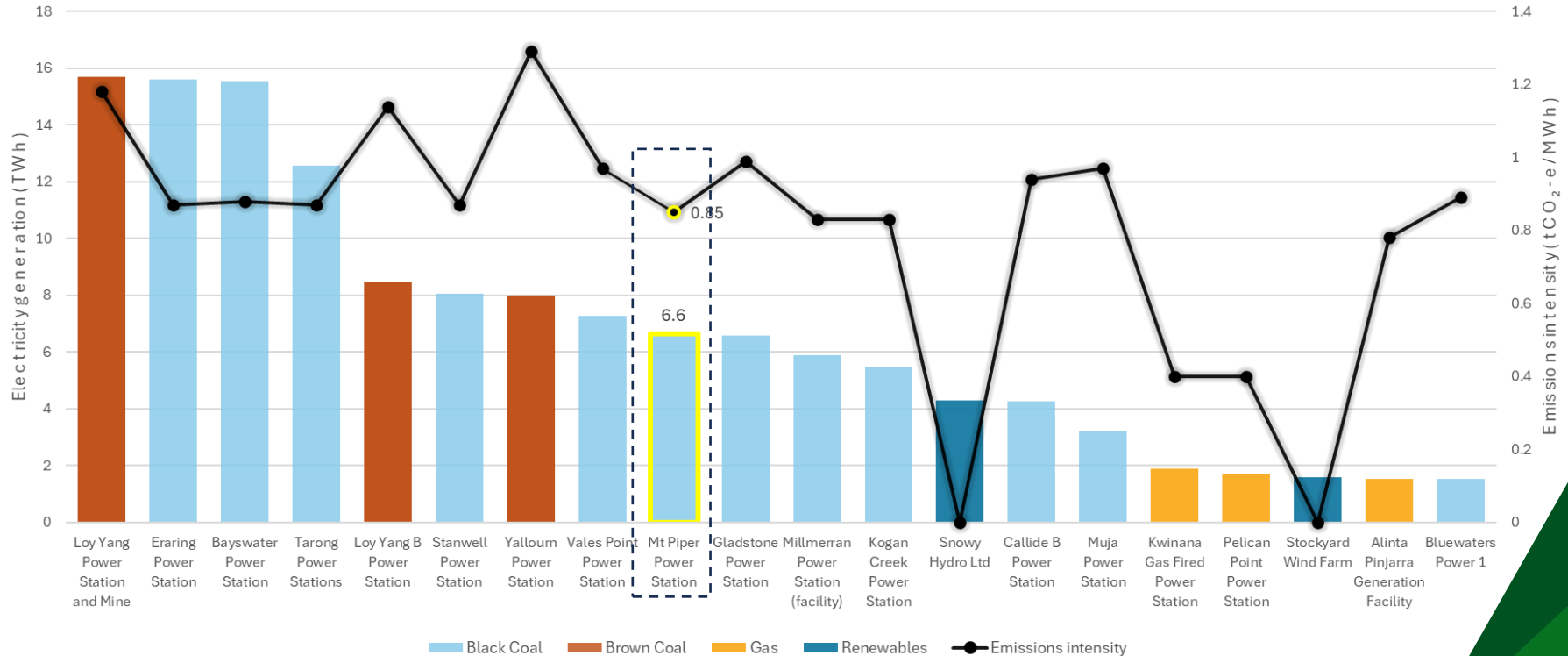
National Greenhouse & Energy Reporting Scheme

Australia's top 10 emitters (scope 1) and previous totals
2023-2024



[2023-24 published data highlights](#)
[Clean Energy Regulator](#)

Australia's 20 largest electricity generators & Emissions Intensity 2023-24



3.6 EnergyAustralia MPPS Biodiversity and Ecology

Thompson Creek Reservoir (TCR) &
Pine Dale Mine (PDM) 2025

TCR Biodiversity Offset Area

Revegetation Success

- Thinning works completed July 2025
- Additional planting: 10–20 eucalyptus trees in central area
- Survival rates:
 - Stage 1 & 2: **Successful**
 - Stage 3: **60% survival**

Wildlife Support

- Installed **20 nesting boxes**
- Fitted **13 wombat burrows** with mange treatment flaps

Recommendations from Biodiversity Conservation Trust

- Continue monitoring Stage 3 plantings
- Maintain wildlife habitat enhancements



Supplementary planting performed in western part of BOA. Photo taken 19 September 2024



Supplementary planting performed in western part of BOA. Photo taken 14 November 2025

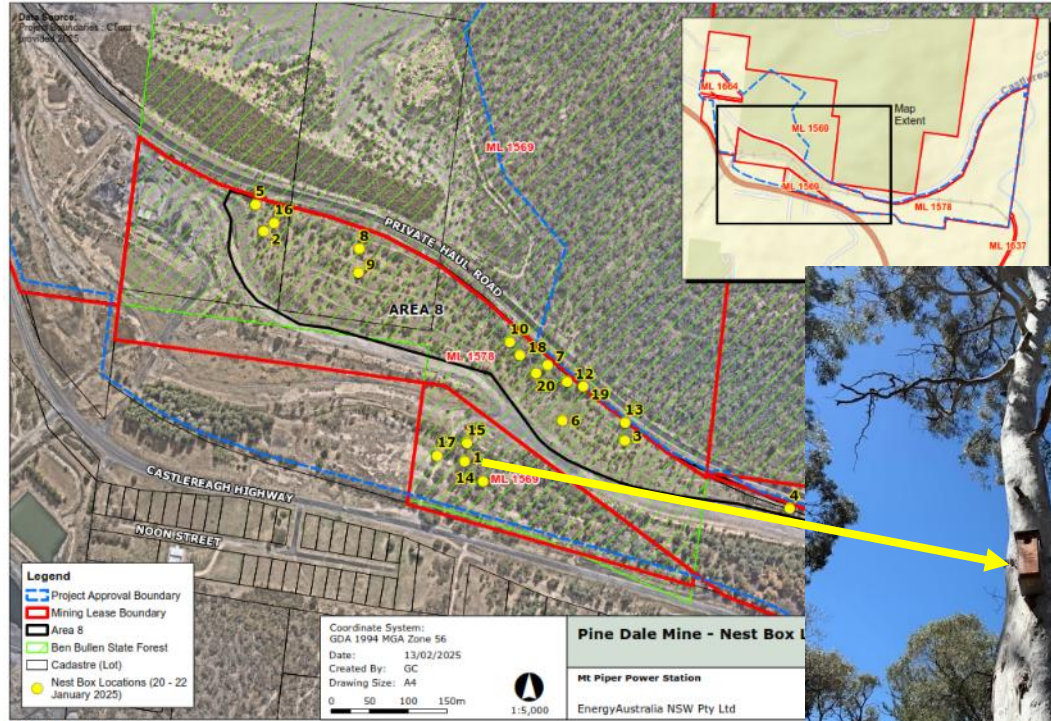


Nesting Box 30 (TCR 30)

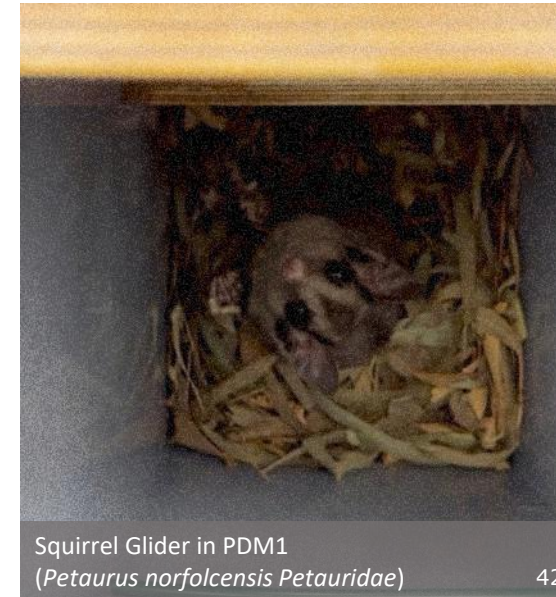


Nesting Box 33 (TCR 33)

Pine Dale Mine Nesting Box project



- 20 nesting boxes installed at PDM
- Inspection completed 7 November 2025
- 3 nesting boxes inhabited by possums
- Squirrel Glider listed as vulnerable in NSW



Links to MPPS Environment Reports & Monitoring Data

- [Mt Piper EPA Reports | EnergyAustralia](#)
 - Monthly MPPS Environmental Monitoring Data Report
 - Annual Air Emission Monitoring Report
- [Mt Piper Water Data | EnergyAustralia](#)
 - Weekly Water Storage Report (Lake Lyell, Thompsons Creek Reservoir and Lake Wallace)
- [Mt Piper Brine in Ash Co-Placement | EnergyAustralia](#)
 - Mt Piper Ash Repository Annual Environmental Monitoring Report
- [Pine Dale Mine - Pollution Monitoring Data | EnergyAustralia](#)
 - Pine Dale Mine Monthly Pollution Monitoring Data
- [Yarraboldy Stage 1 | EnergyAustralia](#)
 - Pine Dale Mine Annual Review
 - Pine Dale Mine Forward Program
 - Pine Dale Mine Annual Rehabilitation Report

3.7 Environmental Planning Approvals

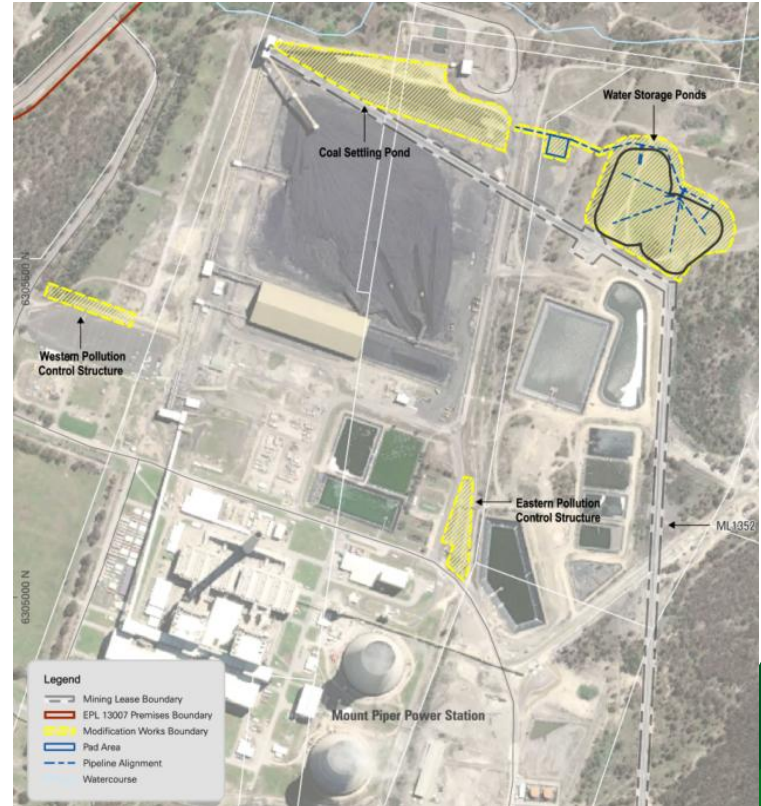
Environment Planning Approvals

	Approval Process - Stage					
	Project Description/Introduction (SEARs or Mod briefing, application briefing)	Complete Environmental Studies & Prepare report (SEE, EIS or Mod report)	Lodge Application with Determining Authority (DPHI or LCC)	Public Exhibition	EA Response to Submissions	Determining Authority Assessment & Project Determination
EA Project	Community Consultation					
Lake Lyell Pumped Hydro Site Investigation Geotech (Council DA)						Approved
Lake Lyell Pumped Hydro Site Investigation Geotech Mod 1 (Council DA)						Approved
Mt Piper Battery Energy Storage System (SSD)						Approved
Lake Lyell Pumped Hydro (CSSI)						
Lamberts North Ash Repository Mod 2 (SSD) (extension of operating hours)						Approved
Mt Piper Mod 9 (SSD) (Ash repository capping)						Approved
Mt Piper Mod 10 (SSD) (Coal settling pond augmentation)						
Springvale Water Treatment Plant Mod 11 (SSD) (Transfer of water from SVWTP to TCR)						Approved

Environment Planning Approvals

MPPS – Modification 10 (Coal Settling Pond Augmentation)

- Modification report submitted to DPHI in November 2025
- Public exhibition 12 – 26 November 2025
- Response to Submissions Report currently being prepared



4. Operations and Project Updates

4.1. Operations - Mt Piper Power Station

Mt Piper Power Station

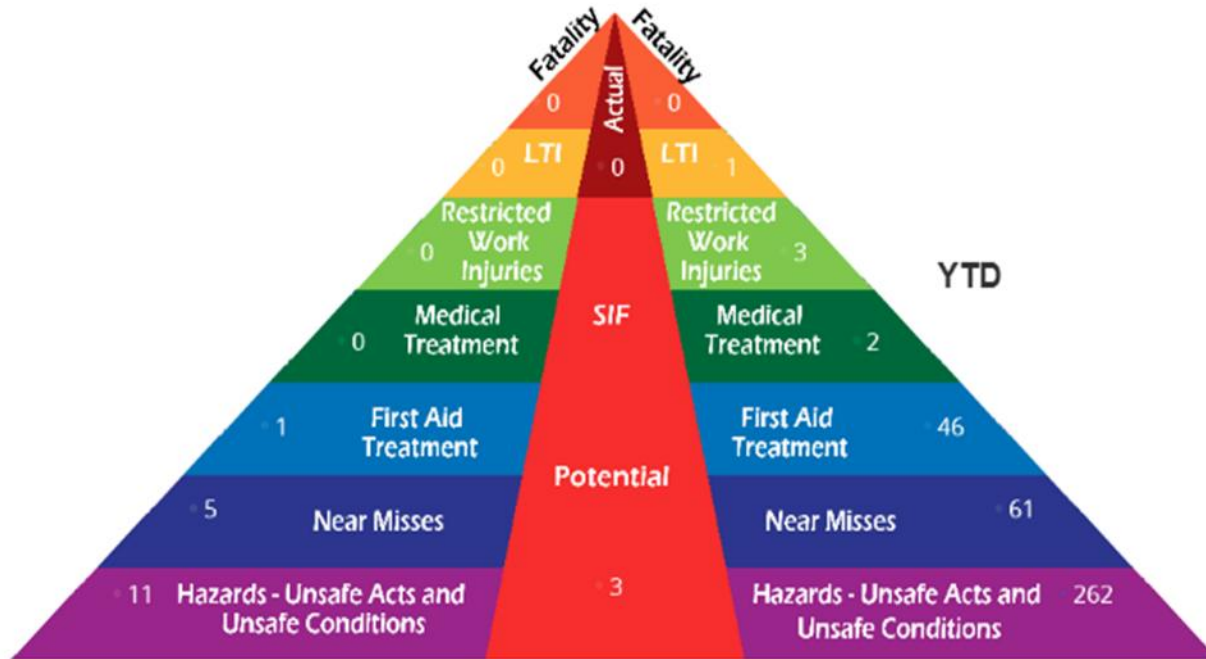
Highlights

-  **15%** NSW electricity supply
-  **189** permanent jobs
-  **20** apprentices
-  **\$40** million annual injection into local economy
-  **1430** mega-watts



Site Safety – November 2025

Nov 25



YTD is calculated to the end of the previous month

Site Safety – November 2025

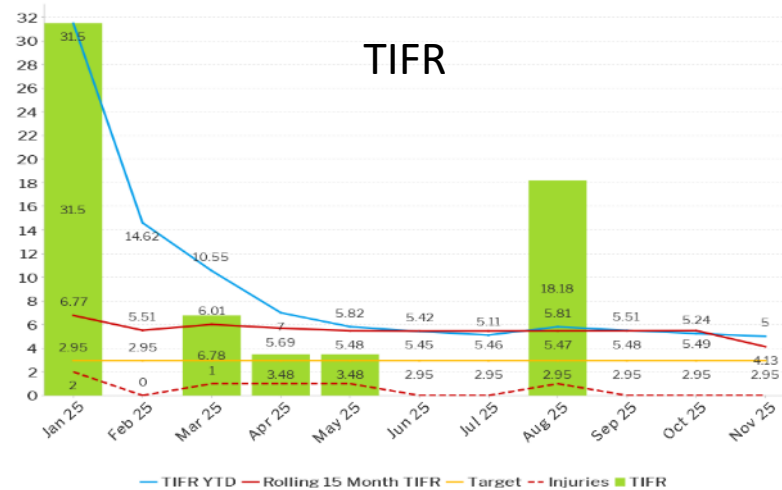
YTD – TIFR (As of Nov 2025)

Actual = 5

Target = 5.5

Ops and Projects

(Note 2.95 is EA Target overall)



Month	TIFR	TIFR YTD	Rolling 15 Month TIFR	Target	Injuries
Jan 25	31.50	31.50	6.77	2.95	2
Feb 25	0.00	14.62	5.51	2.95	0
Mar 25	6.78	10.55	6.01	2.95	1
Apr 25	3.48	7.00	5.69	2.95	1
May 25	3.48	5.82	5.48	2.95	1
Jun 25	0.00	5.42	5.45	2.95	0
Jul 25	0.00	5.11	5.46	2.95	0
Aug 25	18.18	5.81	5.47	2.95	1
Sep 25	0.00	5.51	5.48	2.95	0
Oct 25	0.00	5.24	5.49	2.95	0
Nov 25	0.00	5.00	4.13	2.95	0

Market update – operation in the market

REDACTED

Operations update – December

REDACTED



Coal plant live storage area and 1E Mill



Operations update – December

REDACTED



Mt Piper | Supporting the Energy Transition

Key Achievements this year:

- Successfully delivered the most complex outage in the station's history, on time and on budget.
- Transitioned from just-in-time ash repositories to proactive environmental risk management.
- Continued engagement with regulators and community on the path forward for the region's energy future.

Our People:

- Continue to demonstrate operational excellence while preparing for the station's evolving role.
- Restructured our Asset and Maintenance teams to set them up for success, with clearer roles and greater accountability.
- Proud to be part of the region's energy transition, alongside major projects including the Mt Piper Battery Energy Storage System and Lake Lyell Pumped Hydro



4.2 Project - Mt Piper BESS

Outcome - Commonwealth Investment Scheme

In 2026 we start shaping the project benefits for the local community and how they will be administered and when they start through workshops, briefings, consultation paper, partnership agreements

\$2.4M community benefits are to be designed with key community groups and include:

- Voluntary Planning Agreement for Council
- Rural Fire support, such as training and equipment
- Local employment commitments and host for NSW Government Infrastructure
- Women in Construction partnership to provide training and mentoring
- Innovation and capacity building workshops for local suppliers
- Community battery grants and TAFE student driving programs
- STEM skills program to continue in local schools during construction



Mt Piper BESS overview



- ✓ Adjacent to Mt Piper Power Station
- ✓ FID anticipated in Q4 2026
- ✓ Supports grid demand when needed
- ✓ Low environmental and social impacts with DA granted November 2024
- ✓ Developing Stage 1 (250MW, 4 hours) following recent success in Commonwealth Government Capacity Investment Scheme (CIS)



4.3 Project – Lake Lyell Pumped Hydro

Reservoir

Flow of water to
generate electricity
(high demand)

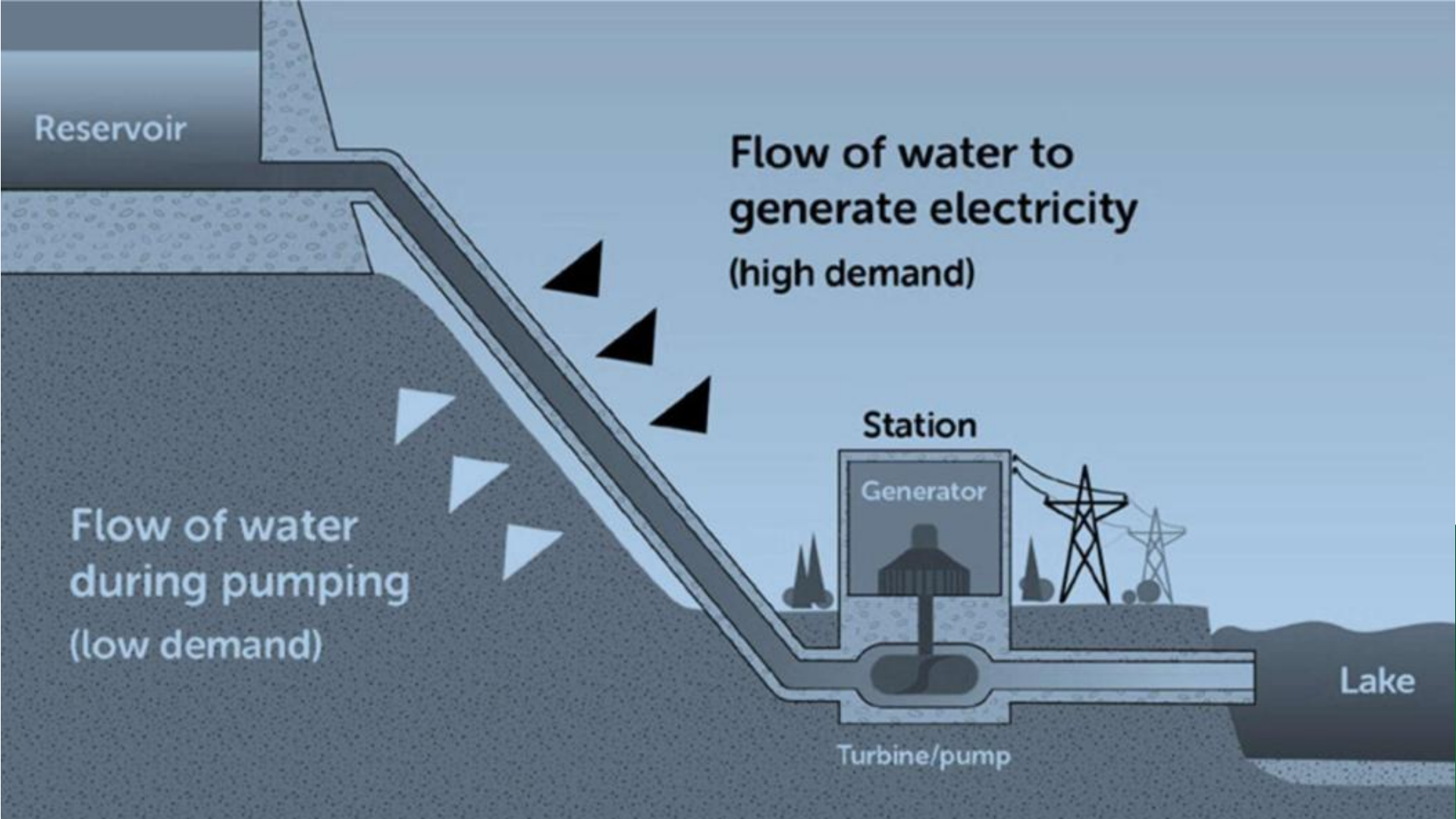
Flow of water
during pumping
(low demand)

Station

Generator

Turbine/pump

Lake



Outcomes – recent consultation Oct – Nov 25



71%

of you knew about the Project



Biodiversity was most important to you, with a particular interest in local platypus



65%

of you supported the Project



Lake Lyell is important to the community, especially for recreation



10

Pop-ups



335

People spoken to



28

Print ads



9

Social media posts (reach)



112

Dot board participation



260

Radio ads



151

Feedback cards completed

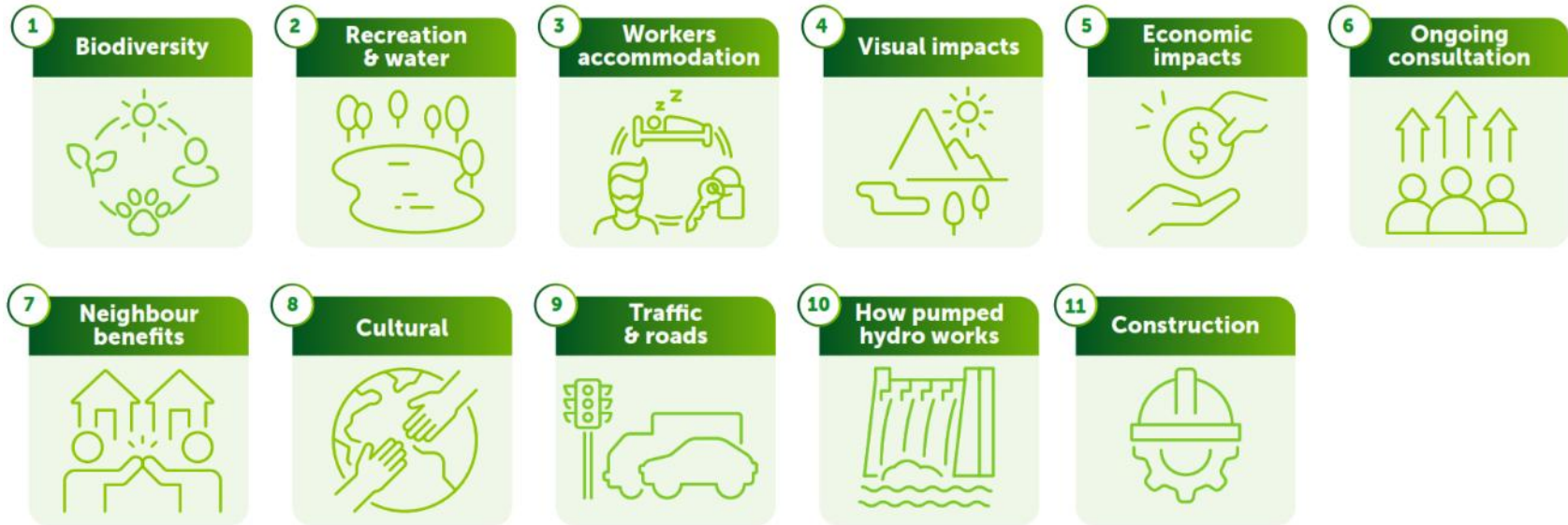


15

Stakeholder briefings

Outcomes – recent consultation Oct – Nov 25

What was important to people



Next steps

- Submission of the Environmental Impact Statement (EIS)
- The EIS will be on public exhibition in 2026 for a minimum of 28 days as determined by the NSW Government
- Project HQ is open, website will continue to host a wide range of materials, and the community can subscribe for updates

4.4 Update – Lithgow Community



The
Heart
of EA

MT PIPER GRANTS 2025

Congratulations to our round 2 Community Grants recipients



Cullen Bullen Public School

Refurbish its outdoor seating area, creating a modern, sustainable, and comfortable space for students, families, and the wider community ahead of its 150th celebration.



Lithgow Community Projects (Lithgow Cares Committee)

Deliver youth engagement workshops in local high schools and a community event focused on promoting healthy relationships and building resilience among young people.



Rydal Recreation Reserve

Technology upgrades to improve internet connectivity for thousands of event attendees and community users to support education, tourism, and digital transactions at the reserve.

2025 year in review

Highlights

Station Outage



2 x units off grid for major works



1500 workers



24x7 x **8** weeks



Most complex outage

undertaken to date at Mt Piper



Unwavering focus on **safety, teamwork, and getting the job done right.**



66

hours of
volunteering

15

school sessions

1089
student
interactions

30

Community
Grant
applicants

\$59k

Community
Grants
funded

61

Site tours

>550
persons

Pop-up

engagements

18

177K

Reach Lithgow
Light the Way
Facebook page

5

CCC meetings
hosted

2025 year in review

Connecting with and supporting
the Lithgow community

Fish
restocking

Lifesaving
Defibs

Lithgow
Show

Schools
STEM
Program

Police
Rescue
Training

Portland
Family
Fun Day

Rydal
Show

Lithgow
Landcare

Youth
Space

Gone
Fishing

New
Portland
BBQ

Christmas
Concert



5. General discussion and closing remarks

Thank you