

# **EnergyAustralia Yallourn Pty Ltd**

## **Monthly Air Emissions Compliance Report**

November 2025



**EnergyAustralia**  
LIGHT THE WAY

# Monthly Discharge to Air Compliance Summary

Indicator	Carbon Monoxide	Oxides of Nitrogen (as NO <sub>2</sub> )	Particles (Total)	Sulphur Dioxide
Maximum Licence Limit (g/min)	139,000	51,600	24,100	104,000
Monthly Maximum Reported (g/min)	35,068	23,183	11,346	53,104
90th Percentile Licence Limit (g/min)	85,600	49,100	14,500	73,100
YTD Month End 90th Percentile (g/min)	18,503	22,184	10,726	43,633
Discharge to Air Licence Limit Compliance	100%	100%	100%	100%
Monitoring System Availability (%)	100%	100%	100%	100%

# EPA Operating Licence Site Details

Licence Holder	EnergyAustralia Yallourn PTY LTD
Licence Number	OL000010961
Premises Address	Eastern Rd, Yallourn VIC 3825
Site Description	This licence applies to a premises, where brown coal is mined, and electricity is generated in a brown coal fired power station.
Reporting Period	November 2025
Licence Discharge Points	A1: Latitude -38.1769981; Longitude 146.345441
	A2a: Latitude -38.1769981; Longitude 146.3454416
	A2b: Latitude -38.1772303; Longitude 146.3447922
Websites	<a href="#">Permission Information and Performance Statements</a>
	<a href="#">Types of Operating Licences</a>
	<a href="#">EPA AirWatch</a>
	<a href="#">Latrobe Valley Air Monitoring Network Inc.</a>

# Discharge to Air Licence Limits

Discharge Point		Indicator	Units <sup>[1]</sup>	90th Percentile Limit <sup>[2]</sup>	Maximum Limit	Monitoring Frequency
A1 A2a A2b	Bubble Limit A1, A2a, A2b	Carbon Monoxide	g/min	<b>85,600</b>	<b>139,000</b>	Continuous
		Oxides of Nitrogen (as NO <sub>2</sub> )	g/min	<b>49,100</b>	<b>51,600</b>	Continuous
		Particles (Total)	g/min	<b>14,500</b>	<b>24,100</b>	Continuous
		Sulfur Dioxide	g/min	<b>73,100</b>	<b>104,000</b>	Continuous

[1] g/min =grams per minute 30-minute average

[2] 90th percentile limits are based on a 12-month rolling average

# Monthly Air Emissions Daily Performance

Indicator	Carbon Monoxide Daily Maximum (g/min)	Oxides of Nitrogen (as NO <sub>2</sub> ) Daily Maximum (g/min)	Particles (Total) Daily Maximum (g/min) [3]	Sulfur Dioxide Daily Maximum (g/min)
<b>Maximum Limits</b>	<b>139,000</b>	<b>51,600</b>	<b>24,100</b>	<b>104,000</b>
01-Nov-25	8,547	20,266	7,361	41,545
02-Nov-25	12,112	23,183	7,594	41,490
03-Nov-25	11,668	21,133	7,155	38,831
04-Nov-25	10,397	22,153	7,268	25,088
05-Nov-25	19,539	20,920	7,070	23,223
06-Nov-25	13,027	19,654	9,411	28,507
07-Nov-25	10,764	18,322	6,861	30,321
08-Nov-25	7,504	19,327	7,106	31,191
09-Nov-25	8,533	19,389	7,570	30,873
10-Nov-25	15,480	20,448	7,562	35,130
11-Nov-25	14,964	20,230	7,481	33,766
12-Nov-25	17,864	20,040	7,623	21,704
13-Nov-25	22,110	18,854	7,474	27,742
14-Nov-25	22,178	18,890	7,865	35,631
15-Nov-25	20,784	20,099	8,605	47,903
16-Nov-25	13,742	17,282	7,759	53,104
17-Nov-25	35,068	17,376	9,391	42,318
18-Nov-25	17,604	18,996	8,131	30,163
19-Nov-25	9,729	19,566	8,078	44,271
20-Nov-25	8,178	19,359	8,218	49,748
21-Nov-25	10,577	19,586	9,229	47,156
22-Nov-25	12,722	17,744	11,346	35,003
23-Nov-25	5,533	12,430	6,190	21,575
24-Nov-25	20,920	13,053	8,166	20,626
25-Nov-25	11,588	11,537	7,343	20,651
26-Nov-25	7,812	11,071	5,659	20,900
27-Nov-25	15,950	11,203	6,642	21,772
28-Nov-25	18,274	11,483	5,677	20,074
29-Nov-25	15,710	11,108	6,388	19,410
30-Nov-25	6,807	11,100	5,642	23,770

[3] In accordance with licence condition OL\_DA1.10.3 & and OL \_DA1.10.4 the discharge limits for particles do not apply during the plant start-up and shut-down or the accidental failure of major operating equipment and has been excluded from this daily total.

# Air Emissions 90th Percentile Performance <sup>[2]</sup>

	Carbon Monoxide (g/min)	Oxides of Nitrogen (as NO <sub>2</sub> ) (g/min)	Particulate Matter (g/min) (Total) <sup>[3]</sup>	Sulfur Dioxide (g/min)
<b>90th Percentile Licence Limits</b>	<b>85,600</b>	<b>49,100</b>	<b>14,500</b>	<b>73,100</b>
90th Percentile (Month End)	18,503	22,184	10,726	43,633

[2] 90th percentile limits are based on a 12-month rolling average

[3] In accordance with licence condition LI\_DA1.10.3 & and LI\_DA1.10.4 the discharge limits for particles do not apply during the plant start-up and shut-down or the accidental failure of major operating equipment and has been excluded from this daily total.

# Monthly Data Explanation

Licence Limit Exceedances			
This table provides a summary and explanation of exceedances of air discharge limits			
Date	Indicator Exceeded	Location (A1, A2a, A2b)	Explanation
N/A	N/A	N/A	No exceedances of licence conditions were reported for the month.

# Monthly Data Explanation

Monitoring Systems Availability				
This table provides a summary of missing data periods requiring substitutions used for determination of daily compliance status				
Date/Time	Loss of Availability (% of month)	Indicator	Location (A1, A2a, A2b)	Explanation
N/A	N/A	N/A	N/A	No Data losses were reported for the month

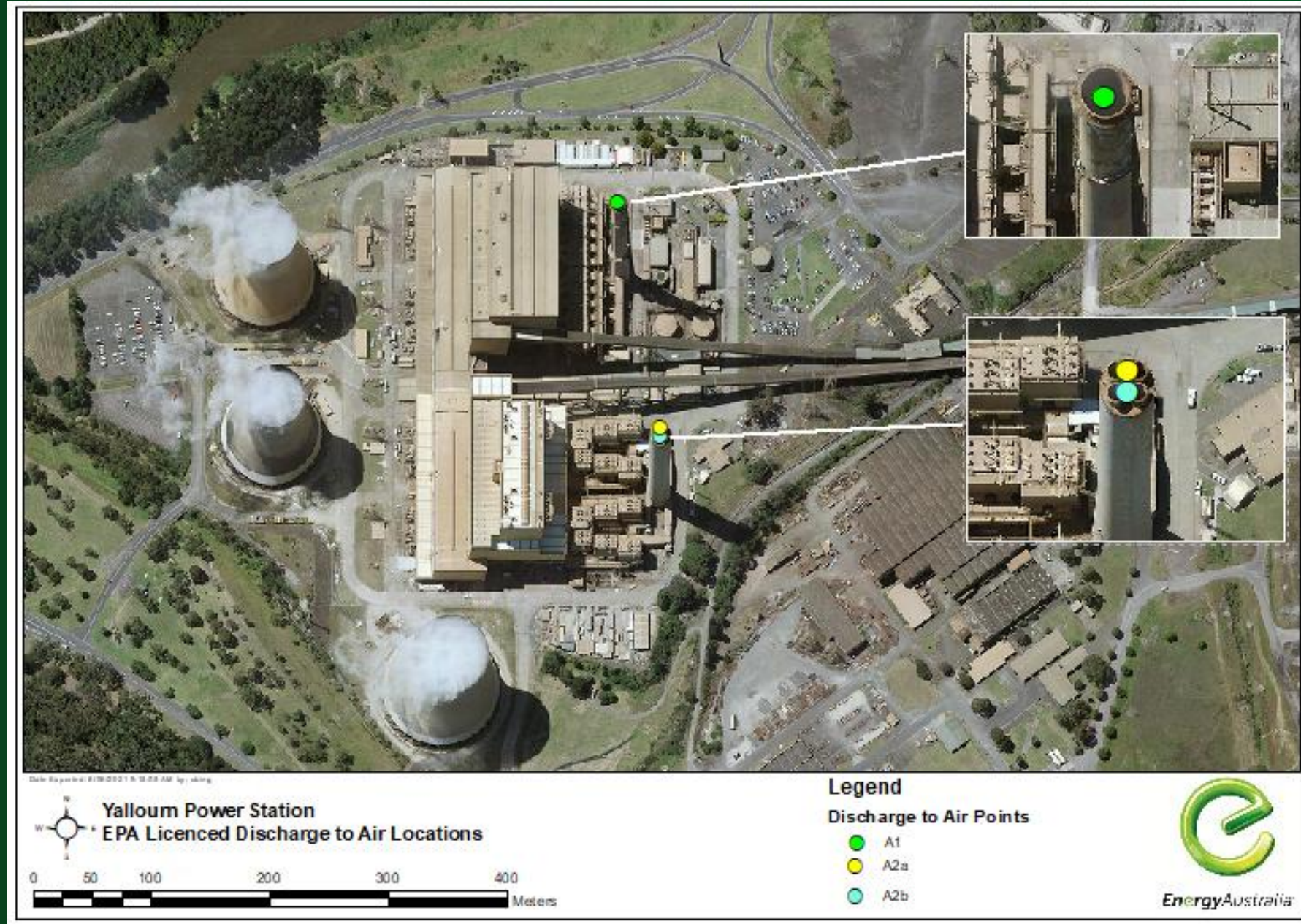


# Monthly Data Explanation

## Amendments to Previous Monthly Reports

No Amendment Required

# Yallourn Power Station - Licenced Discharge to Air Points



November 2025