

EnergyAustralia Lithgow Region Community Consultative Committee

FINAL Meeting Minutes – 05 August 2025

Member attendees:

- Julie Favell
- Jim (Cricket) Whitty
- Brian Fitzgerald
- Rob White
- Auntie Helen Riley
- Cr Ray Smith – Lithgow City Council
- Jonathon English – EnergyAustralia
- Jarvis Lulham – EnergyAustralia (standing in for Ben Eastwood)
- Cath Russell – EnergyAustralia

Also present:

- Dave Simpfendorfer – EnergyAustralia
- Harley McNamara - EnergyAustralia
- Lauren Stevens – Lithgow City Council

Apologies:

- Ben Eastwood – EnergyAustralia

Presenters:

- Michael de Vink – EnergyAustralia
- Jane Keeble – EnergyAustralia

Chair:

- Brendan Blakeley

Item	Discussion Point
------	------------------

1	Welcome and introductions
---	----------------------------------

- The meeting began at 5:02pm.
- The chair welcomed all members.
- The chair acknowledged Country.
- The chair asked for declarations of interest:
 - The chair noted he chaired a similar group for EnergyAustralia at Tallawarra Power Station.
 - The chair declared payment received from EnergyAustralia for his role as independent chair of this CCC.
 - No other interests were declared.

2	Questions on notice and actions (see slides 6 to 13)
---	---

Update on status of scheduled maintenance works on the dam wall at Lake Lyell

Jonathan English noted:

- The fuse gates works have been reassessed, and the system has been deemed fit for purpose by the dam safety consultant and the equipment manufacturer.
- EnergyAustralia will continue to monitor the dam wall and associated equipment as part of regular asset management and dam safety compliance activities.

Item	Discussion Point
------	------------------

- *Julie Favell asked what measures are in place in the event of an earthquake.*
- Jonathan responded that this is covered in the dam safety plan and there is a hierarchy of inspection depending on the level of seismic activity. Typically, after a tremor the team does a visual inspection - looking at the road surface, alignment of road barriers and survey markers. They also look for signs of seepage and turbidity.
- *Rob White asked about the timing of the next assessment of the fuse gates.*
- Jonathan responded that the next full assessment will be in five years, but they will also be looked at next year as part of the dam risk review.

Mt Piper Modification 10 Biodiversity Assessment

- Jarvis Lulham noted the area impacted by Mod 10 is around 3 hectares. Recent studies showed that most of this area is grassland and regrowth on a previously cleared area that has been disturbed.
- Jarvis showed some photos of the fauna species that have been identified including ringtail and gliding possums.
- *Julie Favell asked if the survey was of the wider area or just the three hectares.*
- Jarvis responded that it was of the wider area, and this is where the gliders and possums were found.

Summary of regulator requests regarding Pine Dale Mine.

Jarvis Lulham noted:

- Three of the requests were primarily administrative changes, including extending care and maintenance activities through to mine closure, updating the remediation plan to reflect the changes to the rehabilitation guidelines and address the risks of adverse weather events.
- The main recommendation was to test the stockpiles of topsoil for its suitability for use in future rehabilitation.
- *Julie Favell asked if the topsoil was local.*
- Jarvis responded that the topsoil was from on site and was put aside when mine areas were cleared.
- *Julie asked if the response to the requests will be made public.*
- Jarvis responded that the amended plans and reports will be placed on the website.

Proposed Mt Piper BESS Community Benefits Program

- Cath Russell noted that around \$6.4 million was being looked at for community benefits associated with the proposed BESS. Of this around \$4.0 million is proposed to fund First Nations initiatives.
 - EnergyAustralia is also looking at a voluntary planning agreement with Council.
 - EnergyAustralia has let the Commonwealth know about some options for community benefits as part of the BESS application to the Capacity Investment Scheme.
-

Item	Discussion Point
------	------------------

- | | |
|--|--|
| | <ul style="list-style-type: none"> • The next step will be to do workshops on the benefits program with a range of community stakeholders. • <i>Rob White asked why EnergyAustralia hasn't spoken with all Aboriginal groups.</i> • Cath replied that for the planning component, all processes were followed, and the 22 registered parties were notified. • EnergyAustralia has had contact with the four local First Nations groups active in Lithgow and if there are people who want to be involved, EnergyAustralia is open to speaking with them. • <i>Auntie Helen noted that the four groups did different things in the community but often worked together.</i> • <i>Rob White asked who the four groups were and stated he felt that there was selective engagement of local Aboriginal people.</i> • Cath noted that EnergyAustralia was open to speaking with all interested stakeholders. • <i>Cr Smith asked about the involvement of the Bathurst Local Aboriginal Land Council.</i> • <i>Auntie Helen said the Land Council represented Aboriginal people within the community and when it comes to planning matters, they must be consulted. She noted that Mingaan worked closely with the local land council on many shared matters. She observed that the process for heritage studies etc was set out by the Government and she expressed some reservations about this process, but stated it had to be followed. She concluded that on cultural and heritage matters only Traditional Custodians with knowledge of Country could speak for Country.</i> • The chair rounded this discussion noting that: <ul style="list-style-type: none"> - The process for heritage studies etc for major projects is set out in relevant legislation and guidelines. - The process for identifying registered parties is run by DCCEEW and the NSW Heritage Office and EnergyAustralia is not involved in this. - The process for the BESS community benefits program is being undertaken by EnergyAustralia and if people want to get involved, they should contact Energy Australia. |
|--|--|

New technologies in mine rehabilitation and recovery of waste products such as ash.

Jonathan English noted that:

- EnergyAustralia is happy to consider new and emerging technologies and approaches to mine rehabilitation.
- The team works closely with specialists to implement mine rehabilitation at Pine Dale and these specialists keep them up to date with new approaches.
- He noted the successful completion of rehabilitation that led to the relinquishing of the Enhance Place lease in 2022.
- The chair noted that an earlier presentation on Lamberts North Ash Repository explained that the repository was being set up in cells

Item	Discussion Point
------	------------------

enabling it to be “mined” in the future when no more coal ash is being produced.

- *Julie said that the more material that can be prevented from entering the repository the better. She also noted that even with the mitigation measures, material at MPAR was expected to continue to leach into the groundwater until 2039.*
- *Julie asked for an update on NuRock*
- Jonathon responded that NuRock was a separate business to Energy Australia, and he can't comment on their behalf. He noted NuRock was active on the site and continue to trial their technology.
- He also stated that MPAR is a legacy repository that EnergyAustralia is working to improve environmental outcomes through placing a “skull cap” covering over the repository to limit further water penetration.

Wangcol Creek

- *Julie put forward a suggestion to consider a swamp type system to help:*
 - *improve water quality within Wangcol Creek*
 - *serve as a place for people to walk along the creek*
 - *become a memorial for miners in the area.**She identified the Ploughman Wetlands at Orange as an example of how a staged wetland system could be used to improve water quality.*
- *Rob White stated he supported Julie's idea for a memorial wetland system.*

Use of saltwater batteries

- Jonathon noted that EnergyAustralia has a number of projects responding to the transition to a low carbon future. EnergyAustralia is always looking at new technologies.
- Including the Mt Piper BESS, EnergyAustralia has 3 battery projects underway and is incorporating learnings from these into new projects.
- *Julie stated it would be good to use the salts from the water treatment plant, so it doesn't need to go into the repository.*

3

Mt Piper and Pine Dale Update

Slides have been redacted due to confidentiality. Only high-level discussion points are reported below (See slide 15 to 31)

Jonathon English spoke to the following points:

- The outages made for a very busy first half of the year.
 - Unit 1 was out for 52 days and was completed in June. Unit 2 was out for 22 days.
 - With so many people on site and different teams working, an outage is a high-risk time for injuries.
 - Leading into the outage the team did some excellent work in identifying and removing potential hazards.
 - After some injuries in the beginning of the year, things have improved with actual injuries just below the target level.
-

Item	Discussion Point
------	------------------

- The outages were an opportunity to also look at the water-cooling tower medium replacement, some transformers connecting the station into the transmission network and water management.
- Jonthan shared some photos of the outage works.
- He noted that some of the plastic media in the cooling tower was placed in the LNAR as a drainage layer above the bottom membrane. It would perform the same role as putting down a layer of aggregate.
- *Julie asked if this would interfere with future resource recovery.*
- Jonathan noted it was placed as a base layer, and its depth and extent of distribution has been recorded.
- Market demand has been very similar to previous
- Coal deliveries are consistent, and a good stockpile has been established in anticipation of a longwall move later in August.
- Centennial deliveries encompass coal from both Springvale and Clarence, with the bulk of deliveries coming from Springvale.
- Castlereagh supplies have also been consistent.
- The water treatment plant is operating well and as expected.
- Across Q3, both units have been performing well with some minor outages associated with a Gas Air Heater and to repair a condenser tube leak.
- The latest round of MPPS first year apprentices graduated from the Skills Centre in July and used this as an opportunity to showcase examples of their work.
- EnergyAustralia held an apprentice information night in July. 41 people attended and the event included a station tour.
- *Julie noted that she had seen in the news that the Waratah battery has been commissioned.*
- *Rob White asked about the number of local of people employed during the outage.*
- Jonathon responded that due to the specialist skills required, the short timeframe for the works and existing local commitments, there isn't sufficient scale or depth in the local workforce to do all the tasks related to an outage. Therefore, much of the workforce comes in from other areas. UDL Downer has a good stable of local workers that are frequently used.
- Some members of the specialist workforce are in demand, and they follow outages of coal-fired stations across different states.

Environment (see slides 33)

Status of wombat mange program

- Treatment flaps have been installed on the 3 active burrows.
 - The flaps are filled with Cydectin. When asked what the dosage rate was, he estimated it was 3 ml.
 - *Jim noted in his experience wombats will use several burrows and sharing was common.*
-

Item	Discussion Point
------	------------------

- *Rob White commented that if EnergyAustralia was working on the premise of shared burrows, then greater amounts of Cydectin may be required.*
- *Julie Favell asked if the burrows were in vegetated areas and if EnergyAustralia was still working with Anna from the Kanimbla wombat program. She noted that in conversation with Anna, Anna was in favour of more Cydectin being used.*
- Jarvis said he would contact Anna.
- *Rob White asked if there was an accurate count of wombats in the area.*
- Jarvis noted that there wasn't a firm count yet and that the wombats that had been sighted did not seem to have mange.
- *Julie Favell stated Anna had been advised by locals that they had seen wombats with mange on the MPPS site.*

Lamberts North Ash Repository (see slide 34)

- Jonathon noted that LNAR continues to receive quantities of brine conditioned ash associated with Station Generation.
- No water conditioned ash is placed in LNAR.
- As directed by the Biodiversity Conservation Trust Agreement, EnergyAustralia also undertook some tree thinning on the TCR Biodiversity offset area. This work lessens the competition for selected trees.
- *Julie Favell asked if the lopped material was kept in the area.*
- Jarvis responded that it had been left as it would in nature.
- *Julie noted that some of the wattle species along Castlereagh Rd seem to be dying.*
- Jarvis said he would investigate this.
- *Jim stated that wattles could be very short lived.*

Planning approvals status (see slides 36 to 38)

Jonathan outlined the following.

- Mod 9 for the MPAR capping has been approved.
[MOD 9 - Operational Efficiency Improvements | Planning Portal - Department of Planning and Environment](#)
 - Next steps will be to develop a water management plan to reflect the capping strategy once it is approved.
 - The Capping Strategy to be finalised and presented to EPA and Water NSW in Dec 2025.
 - The Mod 10 Scoping report was submitted in July.
[MOD 10 - Water Management Changes | Planning Portal - Department of Planning and Environment](#)
 - Expecting the complete modification report to be lodged later in August 2025.
-

Item	Discussion Point
------	------------------

- The MPPS environmental licence is being varied to cover the Thompson Creek water licence. While the operating arrangements have been approved, a licence is still needed.
- Placement of cooling tower fill in LNAR. A change is needed to formalise placement of differently classified general waste in the repository.
- Updating the Clean Air requirements to respond to changes in the clean air regulations.

Pine Dale and Enhance Place (see slides 39 & 40)

- Jonathan noted there were no changes for Pine Dale which remains in care and maintenance. There have been no non-compliances either.
- The bomb disposal unit will be using the site for further training in August
- *Jim Whitty and Julie Favell noted that they visited during the last exercise.*

Community Update (see slides 41 to 45)

Cath noted that:

- Round 1 Grants were distributed in April.
- There were four recipients including:
 - Creative Community Concepts
 - Lithgow Landcare
 - PCYC Lithgow
 - Uniting Church Lithgow.
- The next round will take place in September and the CCC will be advised when they are open.
- Grants are across the region and cover the areas shown on slide 45.
- *Julie Favell commented that Blackmans Flat wasn't listed on the slide as one of the eligible localities.*

4 **Project updates – BESS** (see slides 34 & 35)

- Jane Keeble provided an update on the BESS, noting the BESS project has been approved by the Department of Planning, Infrastructure and Environment.
[Mt Piper Battery Energy Storage System. | Planning Portal - Department of Planning and Environment](#)
 - The BESS will add to the reliability of the grid by meeting demand when needed.
 - A BESS in this location has very minor environmental and social impacts given its location on the existing power station site.
 - The project is moving into the technical feasibility stage, and the team is working with Transgrid on the detail of the connection into the transmission grid.
-

Item	Discussion Point
	<ul style="list-style-type: none"> • A final investment decision is likely to be made in September or October of 2026. • Once this decision is made, it is expected the project will be up and running later in 2028. • Initially it will be a 250 MW x 4-hour battery with capacity to grow to 500 MW x 4-hour battery. • While the cost of batteries is coming down, it is still a very large investment. • EnergyAustralia will be able to incorporate learnings from the Wooreen battery project in Victoria. • <i>Jim Whitty asked if the connection would be underground.</i> • Jane noted that this was being looked at. Given it was only a short distance from the BESS to the transmission line, underground was definitely an option. • <i>Jim asked about the life of a large battery.</i> • Jane said the team was working on a life cycle of around 20 years. The EIS also covers decommissioning of the battery at the end of its life. <u><i>Mt Piper EIS - Contamination and Waste Assessment</i></u> <p>Jane continued:</p> <ul style="list-style-type: none"> • The STEM project in schools was very successful and expanded to incorporate students ranging from Kindergarten to Year 11, with 971 students taking part. • It was a good opportunity for students and teachers to learn about the energy transition and encounter science in a hands-on, enjoyable way. • EnergyAustralia is starting to look at hosting STEM scholarships for local high schools as well as programs to support teachers in smaller schools who are teaching science even though it is not their area of expertise. • <i>Julie Favell commended the STEM program and noted that it was good to see that the program was also in small schools. She suggested that Capertee school also be involved in any future programs and that EnergyAustralia engage TAFE in training for the BESS workforce.</i> • Cath noted that EnergyAustralia has established relationships with TAFE under existing arrangements for apprentices at Mt Piper Station and the BESS will be an opportunity to expand these opportunities into the renewables sector. • <i>Jim Whitty commended Lithgow TAFE's success in conducting work readiness training for young people.</i> <p>Cath spoke to the benefits sharing scheme for the BESS, with key points including:</p> <ul style="list-style-type: none"> • The BESS community benefits program is distinct from the Lake Lyell scheme, but EnergyAustralia is looking at both programs to ensure

Item	Discussion Point
	<p>they don't duplicate efforts and can be delivered in separate timelines.</p> <ul style="list-style-type: none"> • \$6.4 million is allocated for the BESS subject to Commonwealth approval and further community consultation. • <i>Rob White asked if given the dropping costs, EnergyAustralia is considering more BESS projects.</i> • Jane responded that EnergyAustralia has a small battery at Hallett and, in Victoria, the Wooreen battery is coming online. • More batteries could be placed at Mt Piper in the future, but this would be subject to planning and a business case. • The chair noted that the general approach was to disperse batteries in different locations across the network rather than concentrate too many in one area. • <i>Rob White and Julie Favell asked if EnergyAustralia had any interest in community batteries.</i> • Cath noted that as a generator and retailer, this was an area that EnergyAustralia was looking at. • <i>Julie and Jim noted they would like to see community battery schemes provided locally however Jim questioned how they reliably support the amount of power a community uses.</i> • <i>Julie asked, with the number of batteries proposed for the area, whether TAFE should be looking at a maintenance apprenticeships program.</i>
6	<p>Lake Lyell Pumped Hydro Study (<i>see slides 56 to 62</i>)</p> <p>Michael de Vink provided an update on the EIS noting:</p> <ul style="list-style-type: none"> • EDF is a new 75% partner in the Lake Lyell project with a special purpose company established for the project. • It is quite common for large energy infrastructure projects to diversify ownership as they progress, as this helps exposure to risk particularly in the construction phase. • The EnergyAustralia Lake Lyell project team will stay on leading planning and community engagement. • Subject to approval and a positive investment decision, joint staffing will then ramp up, particularly given EDF's experience in managing construction and operation of hydro projects. • EDF has around 400 hydro projects worldwide and runs a centre of excellence for hydro power in France. • Both companies would be playing key roles in the project. • Community Consultation will remain with EnergyAustralia and EnergyAustralia is about to increase consultation activities over the next few months. • He (Michael) would stay on as PD through the planning stage and review his position after that time. He commented that at some time he would move on from the project.

Item	Discussion Point
------	------------------

Discussion

- *Jim Whitty asked if there was much hydro expertise in Australia?*
- Michael responded that there were experts within Australia however they were quite busy on their own projects such as the Snowy Hydro scheme.
- *Rob White expressed concerns about continuity of staff and the importance of EDF in understanding and keeping to the commitments that EnergyAustralia has made to the community.*
- Cath replied that EnergyAustralia was very open with EDF about these undertakings during the due diligence process. Michael added that a commitments register has been provided to EDF.
- *Both Rob White and Julie Favell noted they were disappointed that an EDF representative wasn't present at this CCC meeting.*
- *Rob White stated that continuity was critical. He observed that in management changeovers it was quite common for new people to come in and put their own stamp on a project and how it is operated. He added that he wasn't comfortable with this change and having a majority partner with no connection to Lithgow. He expressed concerns that there may be unforeseen complexities, and these will be dealt with by people with no history of the project or Lithgow, who will be making decisions about things that impact the community.*
- Michael reiterated that EnergyAustralia was still in the community engagement role.
- *There was discussion about whether the project would have its own CCC.*
- The chair noted that was a matter for the Department and would be covered in the conditions of consent.

Michael spoke to issue of the amended SEARs noting the following changes:

- New proponent details reflecting the EnergyAustralia and EDF joint company.
 - The alternate workers accommodation site.
 - An increase in the nominal 440MW capability – using the same project footprint to generate 385 MW / 8 hours up to 430 MW with an engineering rating of 440MW.
 - *Rob White sought clarification on the total capacity of the project.*
 - Michael stated it was 385 MW over 8 hours yielding a total energy storage capacity of 3080 MWh.
 - *Cr Smith asked where the location of the alternate workers accommodation was.*
 - Michael responded that it was near the Pottery Estate.
-

Item	Discussion Point
------	------------------

- *Rob White asked if the changes to Sir Thomas Mitchell Drive are set out in the SEARs.*
- Michael responded that the SEARs do not go into that level of detail, they outline what is expected to be in the EIS studies. The arrangements for widening Sir Thomas Mitchell drive will be addressed in the traffic study.
- *Rob White referenced a new diagram within the addendum that he has seen and questioned why this wasn't publicly available.*
- There was discussion as to which diagram was being referred to.

Action: The chair asked Rob to send details of the document through.

The document in question has been identified as the Amended Scoping Report [Lake Lyell Pumped Hydro Energy Storage Project \(SSI-77018220\)](#)

Cath outlined the proposed program of consultation over the six weeks from October to mid-November 2025.

- This consultation would allow for discussion on the 24 studies before they are finalised.
 - Information on impacts and benefits and proposed mitigations will be available.
 - Mitigations will be tested with community members.
 - Feedback will be documented within the engagement report.
 - Lodgement is targeted in December.
 - The application will not go on exhibition straight away as it must be reviewed for adequacy by the Department before it goes out for statutory consultation. This usually takes some time.
 - EnergyAustralia has no control over exhibition timing which is at the Department's discretion.
 - *Rob noted that the exhibition date is getting further away.*
 - *Cr Smith expressed reservations about lodging at Christmas and that it was not appropriate to exhibit over this time.*
 - Michael reiterated that if the application was lodged in December, the departmental review would occur over the holiday period with a likely announcement of exhibition across February.
 - *Cr Smith asked what people would see over the pre-consultation period as little information has been provided to date.*
 - Michael noted that over 20 drawings have been on the website in 2024 in relation to concept plan, project footprint, major components and general arrangements.
 - {Post note - while drawings were previously available on the Lake Lyell Pumped Hydro website, they have since been removed as part of the project's refresh to ensure that only accurate and up-to-date information is made available to the public. These earlier drawings had been superseded. A range of updated materials will be made
-

available through the EIS Preview, scheduled for release in October/November this year.}

- Cath responded that information would be provided in summaries of the EIS reports. The pre-submission consultation was a chance for people to look at a definitive version of the proposal that may be subject to some changes before exhibition. Over the six weeks, EnergyAustralia will consult on different aspects of the project but won't be sharing the full reports.
- Full reports will be available as part of the exhibition run by the Department.
- Information will be presented in a range of accessible ways via information sheets and videos and delivered through face-to-face pop-up engagements, Project HQ and 24/7 availability through the website.
- *Rob White responded that some people like himself would want to see more detailed information than summaries, videos and fact sheets. Some people will need detailed information if they are to understand what is being proposed and provide meaningful feedback.*
- *Clr Smith disagreed with information about the amounts being paid to neighbours being made public in the newsletter.*
- Cath responded that EnergyAustralia was open and transparent about these payments, and this was a matter of interest for both neighbours and the broader community.
- She noted that no information about personal details or discussions would ever be shared publicly as these were "in confidence" between EnergyAustralia and the neighbour.
- Making this information available was also a way of encouraging people who feel they may be impacted to come forward and see if they are eligible for a payment.
- *Cr Smith again noted he disagreed with EnergyAustralia's approach.*
- *Rob White questioned how the distribution area was defined and why the same information is distributed across different stages.*
- Cath noted the approach to determining a potential impact area was outlined in the Neighbour Agreement Guide: [EA 212 Neighbour Agreement Guide.pdf](#).
- The guideline was based upon the NSW SIA Guidelines process for defining areas of impact: [Social impacts | Planning Portal - Department of Planning and Environment](#).
- Where it is general information such as newsletters, these are distributed as resources and available. In the case of individual correspondence or legal letters, these will always be addressed mail.
- EnergyAustralia's key message is that while they have guidelines, if someone feels they are impacted they should speak with the team. EnergyAustralia can look at the evidence and determine whether that person could be eligible for payment.

Item	Discussion Point
	<ul style="list-style-type: none"> <i>Rob White noted the documentation stated people can opt-in up until the point of commissioning and asked how commissioning was defined.</i> Michael defined commissioning as the beginning of commercial operation. <i>Rob White noted that this date was some time off and questioned by the urgency in negotiating payments.</i> Michael noted that EnergyAustralia is keen to understand if people feel they are impacted and work through this with them ASAP. If people want to engage now, it helps get a better picture of impacts and concerns. The Stage 1 payment is unconditional, and people can keep it even if the project doesn't proceed. Additional payments will be subject to the project going ahead. <i>Cr Smith referenced the windfarm approach which provides for differing payments based on distance from the project.</i> Michael noted that windfarms have specific impacts, and the windfarm guidelines has criteria to reflect the nature of these impacts.
	Other business <ul style="list-style-type: none"> <i>Rob White raised the question of pig control noting there were still many feral pigs around Lake Lyell.</i> Taken on notice <i>Lauren Smith requested a briefing to Council at some point on the October November consultation program.</i> Taken on notice
8	Meeting close <ul style="list-style-type: none"> The meeting closed at 7.20pm. An <u>orientation session</u> for CCC members focusing solely on the Lake Lyell Project will be held from 6.00pm to 8.00pm on 30 September at Project HQ in Lithgow. The next standing CCC meeting will be held in late November or early December 2025. The focus of this meeting will be environmental reporting. The chair thanked members for their participation.

EnergyAustralia Lithgow Region

Community Consultative Committee

5 August 2025

Jonathon English - Head of Mt Piper



EnergyAustralia
LIGHT THE WAY

Agenda

1. Welcome – Acknowledgement of Country – Declarations of Interest
2. Minutes and Actions
3. Mt Piper and Pine Dale Update
4. Project Updates
 - Mt Piper Battery Energy Storage
 - Lake Lyell Pumped Hydro
6. General Discussion
7. Meeting Close

Acknowledgement of Country

I would like to acknowledge
the Wiradjuri people as the
Traditional Owners of the land
on which we meet today, and
pay my respects to their
Elders past, present and
future

Artwork done by Wurundjeri Traditional Owner, Mandy Nicholson



Declarations of Interest

Minutes and Actions

Action 1 – Jonathon to provide an update on status of scheduled maintenance works on the dam wall at Lake Lyell

Status

- The decision not to proceed with the physical raising of the fuse gates avoids unnecessary intervention while maintaining a strong focus on safety and operational readiness
- Fully supported by the dam safety consultant and original equipment manufacturer
- Aligns with industry best practice.

Next Steps

- Routine annual inspections as part of our ongoing monitoring and asset management strategy
 - regular visual assessments
 - routine checks
 - performance reviews
- to ensure any emerging issues are identified early and addressed promptly.

Action 2 – Ben to present Biodiversity findings for Mod 10

Mt Piper Modification 10 Biodiversity Assessment

Key Findings

- The proposal would impact up to 2.97 ha of native vegetation
- The majority of this is comprised of planted trees, planted shrubs and derived grassland (regrowth and planted trees and shrubs on land previously cleared)
- A total of 90 plant species were detected (68% native and 32% introduced)
- A total of 62 fauna species identified (95% Native, 5% introduced)
- Threatened species found on site:
 - Black Gum (*Eucalyptus aggregata*)
 - Large Bent-winged Bat
 - Dusky Woodswallow
 - Eastern False Pipistrelle
 - Greater Broad-nosed Bat
- The Black Gums were found to have been planted
- No Threatened Ecological Communities would be impacted by the proposal
- Ecosystem and species credits generated from the project will form offset obligations that will need to be satisfied if approval granted

Action 2 – Ben to present Biodiversity findings for Mod 10

Mt Piper Modification 10 Biodiversity Assessment



Common Ringtail Possum as surveyed



Shrubland as surveyed



Derived Grassland as surveyed



Gliding Possum (*Petaurus sp.*) as surveyed

Action 3 –EA to provide a summary of regulator requests regarding Pine Dale Mine

Ref	RR Recommendation	Enhance Place Response
1	<i>Update the Rehabilitation Risk Assessment (RRA) to address all risk items related to mine rehabilitation not just care and maintenance activities e.g. include closure activities in the RRA scope and assess the risk.</i>	The RRA will be reviewed to include closure activities where appropriate. The updated RRA will be submitted with this year's annual reporting requirements for the Forward program and Annual Rehabilitation Report.
2	<i>Update the RMP to include additional information in line with the Rehabilitation Guidelines- Form and Way Rehabilitation management plan for large mines 6.2.4. Growth medium development</i>	The RMP will be updated to include additional information to generally align it with the Form and Way Rehabilitation Management plan for large mines 6.2.4 Growth Medium Development. We intend to update and submit RRA in line with this year's annual reporting requirements for the Forward Program and Annual Rehabilitation Report.
3	<i>Update RMP and RRA to address the risk of adverse weather conditions on rehabilitation success.</i>	The RMP and RRA will be updated to address the risks of adverse weather conditions. We intend to submit and update RRA in line with this year's annual reporting requirements for the Forward Program and Annual Rehabilitation Report.
4	<i>Conduct testing of topsoil stockpiles to determine if ameliorants are likely to be required when the stockpiles are utilised for rehabilitation. This recommendation is based on the observation that stockpiles are in some cases >3m high and this may have had a detrimental impact on the biota and physical characteristics of the stockpiles.</i>	Soil testing will be conducted on topsoil stockpiles by specialist consultants. We intend to undertake this work within FY25-26 reporting period. It will be noted in the updated Forward Program submitted this year.

Action 4 – EA to provide details of the proposed Mt Piper BESS Community Benefits Program

EnergyAustralia intends to share \$6.4M with the local Lithgow community, with 90% targeted towards First Nations initiatives and organisations.

Potential initiatives for a Mt Piper BESS Community Benefits Program were put forward as part of the Capital Investment Scheme (CIS) Bid with the Australian Government.

The Australian Government has a strong emphasis on community benefit sharing particularly how meaningful initiatives and revenue benefits First Nations communities and organisations.

The potential Community Benefit Program is **subject to the Australian Government investment** through the CIS and should this occur – a co-design workshop will be undertaken with the community to explore the potential initiatives and identify other opportunities.

Further detail on the potential initiatives is outlined in the section on the Mt Piper BESS in this presentation.

Question on Notice

Julie Favell asked:

"Thanks to one of our members sending this CSIRO research article. CSIRO MINE SITE REHABILITATION: THE ALGAE ADVANTAGE BY RUTH DAWKINS 13 JUNE 2025 - Algae might seem an unlikely candidate to help transform Australia's post-mining landscapes, but a new CSIRO-led project suggests these tiny aquatic organisms could provide sustainable futures for mine sites, surrounding ecosystems, and local communities. Mine site rehabilitation: the algae advantage – CSIRO"

- EA engages specialist mine site rehabilitation consultants and contractors to develop, implement and supervise mine site rehabilitation at Pine Dale Mine
- EA has successfully completed mine site rehabilitation which was demonstrated by the relinquishment of the Enhance Place Mine Leases in 2022.
- EA is happy to consider all new and emerging technologies and methods in mine site rehabilitation

Question on Notice

Julie Favell asked:

"I spoke to Ben at the last meeting about consideration to clean up their land Pine Dale in particular Wangcol Creek with remediating/revegetation with a swamp vegetation system but as a memorial walk. Concept is to have a swamp system to slow down water but also capture contaminants in the water with the outcome at the end is clean water running through the creek. Inclusive it is open up to the public as a Memorial walk in memory of all the miners who worked in this area. Short version."

- Wangcol Creek extends some 7km in length with multiple landowners.
- EnergyAustralia NSW is:
 - not familiar with this type of proposal.
 - committed to rehabilitating the land at Pine Dale Mine, which covers a section of Wangcol Ck, in accordance with the approved rehabilitation Management Plans for the Site
 - considering progressing remediation works to MPAR to address salts leaching from site, these works will have a beneficial influence on water quality in Wangcol Ck
 - Considering future land use options for the Pine Dale Mine site prior to its closure in consultation with the appropriate landowner

Question on Notice

Julie Favell asked:

"Seeking EnergyAustralia to investigate salt water batteries. Here is a link to add to the agenda item.

Salt Water Battery: Everything You Need To Know"

- EnergyAustralia has a dedicated Projects team that identifies and assesses opportunities that align with EnergyAustralia's strategic direction and support the energy transition to a low carbon future
 - EnergyAustralia seeks to incorporate emerging technologies to improve our productivity and competitiveness
 - The eight specific major Projects that EnergyAustralia is currently engaged in are listed to the right
 - New and emerging technologies will always be considered throughout the transition period into the future
- [Tallawarra A High-Efficiency Upgrade](#)
 - [Tallawarra B Power Station](#)
 - [Lake Lyell Pumped Hydro Energy Storage](#)
 - [Mt Piper Battery Energy Storage System](#)
 - [Wooreen Energy Storage System](#)
 - [Hallett Battery Energy Storage System](#)
 - [Marulan Development Site](#)
 - Asset Projects (e.g. Hydra & Green Transport)

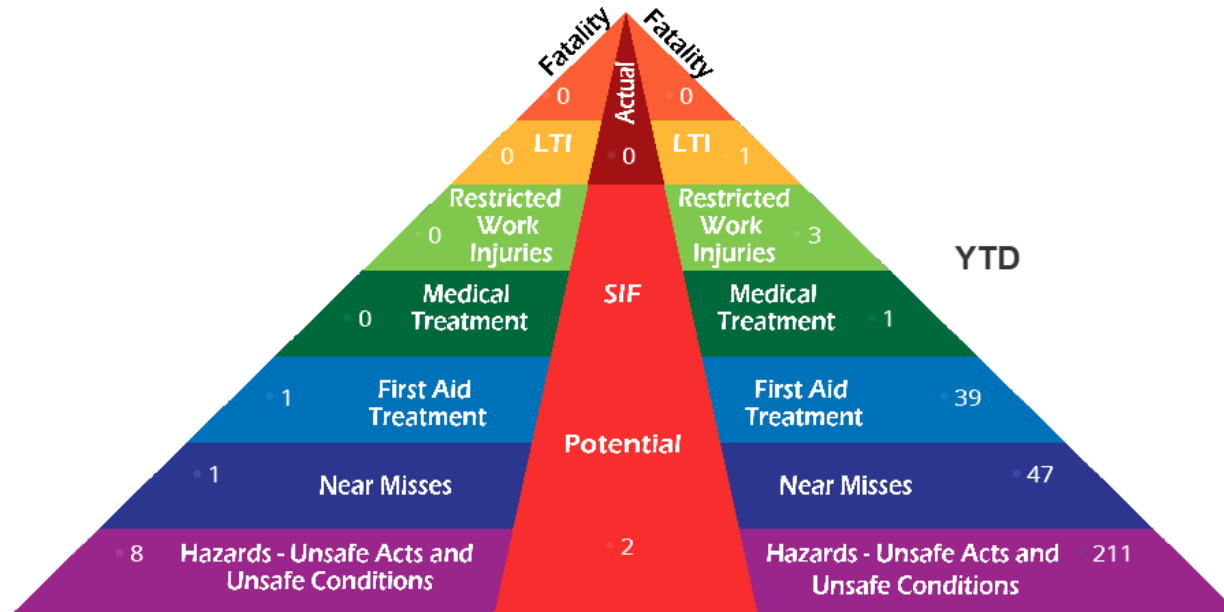
Mt Piper Update

Site Safety

Site Safety – June 2025

Safety Triangle

Jun 25



YTD is calculated to the end of the previous month

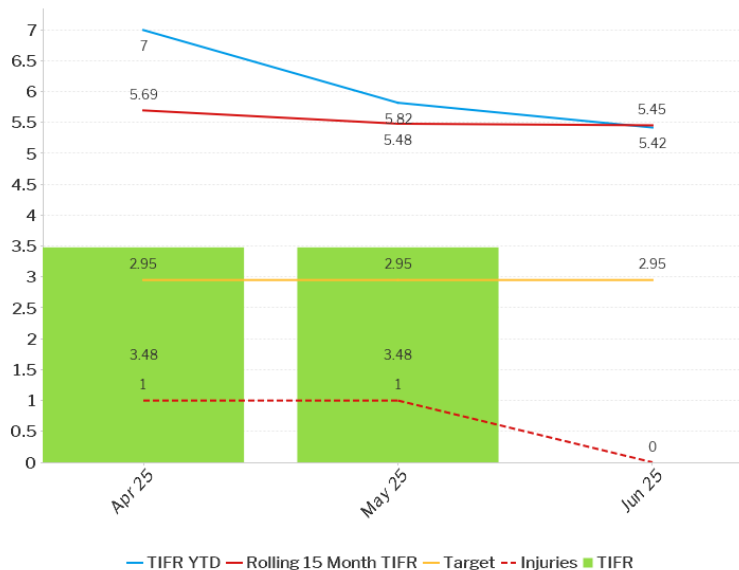
Site Safety June 2025

TIFR (by site)

YTD – TIFR (As of
June 2025)

Actual = 5.42

Target = 5.5



Month	TIFR	TIFR YTD	Rolling 15 Month TIFR	Target	Injuries
Apr 25	3.48	7.00	5.69	2.95	1
May 25	3.48	5.82	5.48	2.95	1
Jun 25	0.00	5.42	5.45	2.95	0

Market Update

Operation in the Market

Redacted

Operations (Site) Update

Operations update – August

Redacted



Operations update – August

Redacted

Outage By Numbers - Execution

Redacted



Outage

Redacted

Redacted

Boiler

Redacted

Turbine

Redacted

Cooling Tower

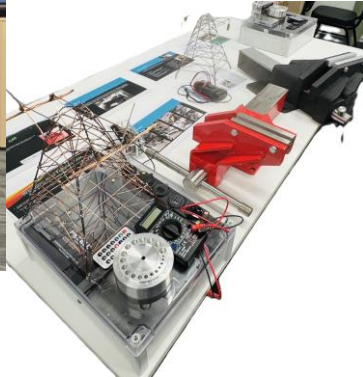
Redacted

Electrical & Controls

Redacted

People

On 23 July our first-year apprentices attended their graduation from the Skill Centre. This event marked an important milestone in their apprenticeship and provided an opportunity to showcase some of the work they've completed throughout the year.



On Thursday 31 July, we held our annual Apprentice Information Night.

We encourage people of all ages to come and explore the opportunities we have on offer and take a peek into what their future could look like with an apprenticeship or traineeship here onsite.

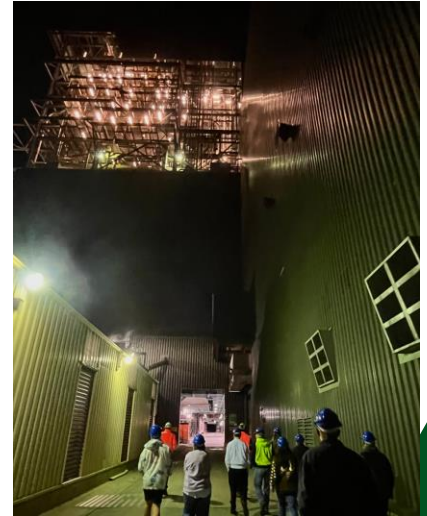
This year, approximately 41 people attended the session. After a brief presentation outlining the available opportunities offered, we took our guests on a guided tour of the station.



People

Tours were led by our Maintenance Team Leaders and current apprentices. They were guided from Level 11 down to Level 3 checking out the Turbine House, feeder floor and PCR. The tour concluded with visits to several of our workshops, finishing at the basement level. Along the way, lots of questions were asked, showing a genuine interest in the work we do.

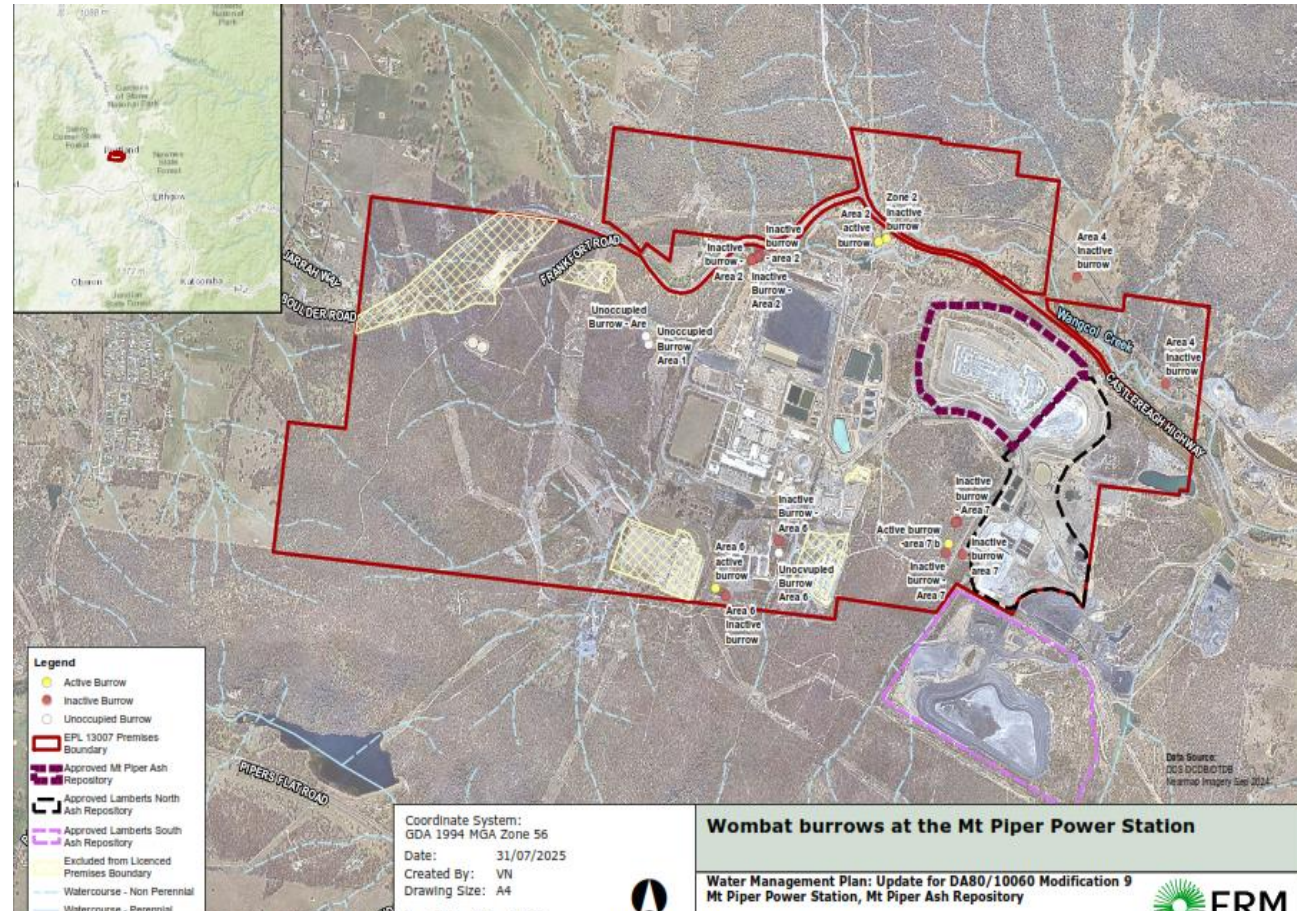
This event is a fantastic way for the local community to discover the opportunities available here at Mt Piper.



Environment

Wombat Survey

- Trail cameras were used in each burrow to monitor wombat activity
- Evidence of ongoing activity was observed at active burrows where flaps were installed
- Survey continues to track wombat munge activity
- Cydectin is reapplied every fortnight, only at burrows where the flap has been used











Lamberts North Ash Repository (LNAR)

- 121,346 m³ of brine conditioned ash was placed in LNAR from Jan to Jun 2025.
- No water conditioned ash (WCA) was placed in LNAR this year, it was placed in MPAR instead.
- Tree thinning at Thompson Creek Reservoir Biodiversity Offset Area



Planning Approvals

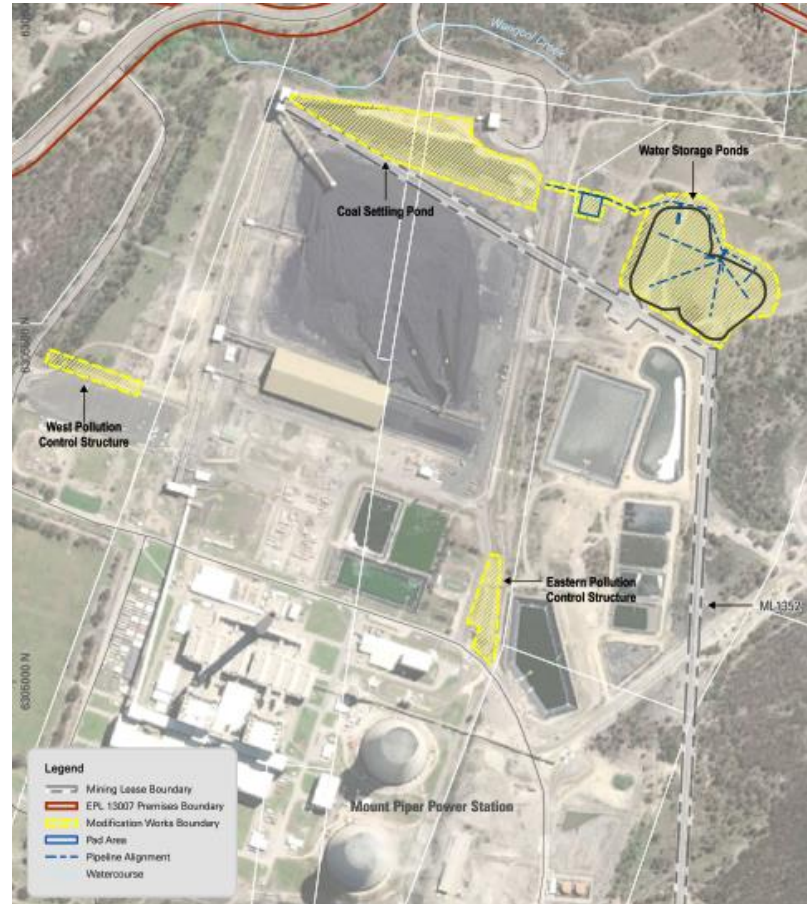
Environment Planning Approvals

	Approval Process - Stage					
	Project Description/Introduction (SEARs or Mod briefing, application briefing)	Complete Environmental Studies & Prepare report (SEE, EIS or Mod report)	Lodge Application with Determining Authority (DPHI or LCC)	Public Exhibition	EA Response to Submissions	Determining Authority Assessment & Project Determination
EA Project	Community Consultation					
Lake Lyell Pumped Hydro Site Investigation Geotech (Council DA)						Approved
Lake Lyell Pumped Hydro Site Investigation Geotech Mod 1 (Council DA)						Approved
Mt Piper Battery Energy Storage System (SSD)						Approved
Lake Lyell Pumped Hydro (CSSI)						
Lamberts North Ash Repository Mod 2 (SSD) (extension of operating hours)						Approved
Mt Piper Mod 9 (SSD) (Ash repository capping)						
Mt Piper Mod 10 (SSD) (Coal settling pond augmentation)						
Springvale Water Treatment Plant Mod 11 (SSD) (Transfer of water from SVWTP to TCR)						Approved

Environment Planning Approvals

MPPS – Modification 10 (Coal Settling Pond Augmentation)

- Scoping report submitted to DPHI in July 2025
- Modification Report being prepared for lodgment with DPHI in August 2025.



Environmental Planning Approvals

MPPS - Modification 9 (MPAR Capping & Zone 2)

- Granted on 24 June 2025
- MPAR Water Management Plan to be prepared in consultation with EPA, WaterNSW
- Capping Strategy to be prepared and submitted to EPA and WaterNSW by 24 Dec 2025
- Further updated to Water Management Plan Required after Capping Strategy Approved

MPPS Environment Protection Licence Variation

Pending amendments to address:

- Thompson Creek Licencing arrangements
- Disposal of Cooling Tower Fill Material to the Lamberts North Ash Repository
- Changes under Clean Air Regulations
- Water Characterisation of the Coal Ash Repositories

Pine Dale Mine and Enhance Place

Pine Dale Mine

- Continues in Care and Maintenance
- No environment non-compliances reported
- NSW bomb disposal unit will be utilising the site in August for further training, similar to training performed in 2024



Community Update



Image: Lithgow Oberon Landcare



The
Heart
of
EA

MT PIPER GRANTS

Congratulations to our round 1 2025 community grant recipients



Creative Community Concepts

Funding to run Ready Steady sports program - free inclusive sporting activities, ensuring that all children have the opportunity to stay active, build confidence, and develop essential life skills.



Lithgow Oberon Landcare

Sourcing and planting 2000 mixed trees and shrubs along Farmers Creek as part of the Farmers Creek rehabilitation project.



PCYC Lithgow

Establishing a space within the Youth Club designed for various activities such as training sessions, social gatherings, study groups, and accessing town services.



Uniting Church Lithgow

Provision of a sensory room for skills-based learning, leisure and recreation, music therapy, and other activities for individuals with neurological conditions



Community Grants

Oakey Park Resident's Association

"With EnergyAustralia's grant the Oakey Park Resident's Association wants to transform Zig Zag Park into Lithgow's most beautiful park. In 5 years' time it will be a wonderful shaded green space."

- OPRA spokesperson Brad Pedersen, recipient of a grant in 2024.



"OPRA has completed the next step in the rejuvenation of Zig Zag Park. These sandstone seating blocks with frog and snake sculptures complement the new playground and create a fun social space for kids, families and anybody who needs a seat. Thanks to EnergyAustralia for their funding. Thanks to the talented local sculptor, Tim Johnman who did so much to make the project a success".



Community Grants

Uniting Church

"We would like to thank EA for their great support which without it, we would not be in a position to commence our journey in bringing first aid training to the wider community. The EA grant has been our foundation stone and from this, we are looking to build safety knowledge into the wider public through First Aid Training"

– Renzo Benedet, Advisor to Uniting Church, Lithgow Parish

Defibrillators were installed at Hoskins Church & Portland Church



Community Grants

2025 Round 2 Grants open for applications 1-30 September

- \$30,000 available
- Area includes Lithgow, Bell, Ben Bullen, Bogee, Bowenfels, Capertee, Clarence, Cullen Bullen, Dargan, Glen Alice, Glen Davis, Hampton, Hartley, Hartley Vale, Little Hartley, Marrangaroo, Meadow Flat, Newnes, Portland, Rydal, Sodwalls, Tarana and Wallerawang.



Pursue objectives that benefit the local or regional communities in which EnergyAustralia operates;



Deliver projects that address our selection criteria and align with our focus areas; and



Require funds for the project up to a maximum of \$10k

Project Spotlight

Mt Piper Battery Energy Storage System (BESS)

Project overview

- Adjacent to Mt Piper Power Station
- Meets demand when needed
- Low environmental and social impacts



What we did

- STEM Program for Lithgow Schools
- Engage students in real-world energy concepts
- Experiments and learnings based around an interactive model



Why we did it



Improve student
outcomes



Changing local
economy



Growing demand
for skilled teachers



High demand for
future ready skills



Expanding awareness
of STEM career pathway



Enhanced recruitment
outcomes

Interest and impact

Interest surpassed expectations so we expanded the program



Aim	Impact
8 to 12 year olds	6 to 16 year olds
3 schools	9 schools
100 students	971 students

High School	La Salle Academy	Lithgow High
	Portland Central	
Primary	St Patrick's	Lithgow Public
	St Joseph's	Cooerwull Public
Small	Cullen Bullen	Hampton

How we did it

- 30 x 1.5hr sessions
- Hands on activities like:
 - Potato Battery Challenge
 - Building energy efficient houses
 - Experiments on conduction
 - Energy transfer games



Reflections and learning

Feedback from teachers and students has been grouped into several themes and summarised below:

Local connection

We know friends or family that have worked or work at Mt Piper Power Station

Experiencing change

We know about renewable projects like solar, wind, pumped hydro and batteries in happening in our area

Sparking interest

We can see that STEM is more than just maths and science, it can be fun

Energy system understanding

We now understand how energy generation, storage and transmission work

Real-world relevance

We would like you to run this STEM program again because students can see the power station and your projects in their local community

Energising memories

We will always remember making a light globe shine with the energy of a potato

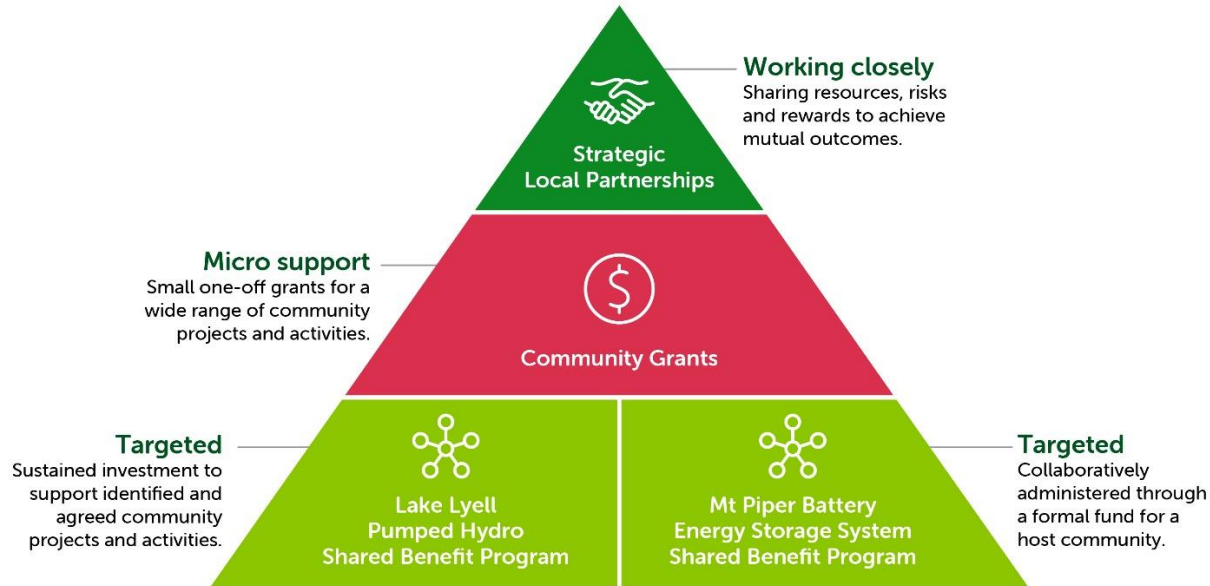
What's next

- STEM scholarships for local high schools
- Adapt and deliver the program in other communities where we operate
- Look to return to Lithgow schools when Mt Piper BESS is in construction



We had left over potatoes which we donated to Nanna's Touch.

Mt Piper BESS Community Benefit Sharing



Mt Piper BESS Community Benefit Sharing

Subject to Australian Government approval | Co-design workshop in late 2025 to finalise

- \$2.4M Community:
 - Voluntary Planning Agreement for Council
 - Rural Fire Support
 - Women in Construction partnership
- \$4M First Nations:
 - Tendering incentives
 - Revenue sharing over life of project
 - Caring for Country program
 - Workforce readiness
 - Seed funding to establish Wiradjuri Cultural Centre

Project Update

Lake Lyell Pumped Hydro

Partnership

- Co-develop with EDF power solutions Australia
- World-leading expertise 20GW of hydro electric power globally
- No changes day to day – we still lead engagement



Planning update

- Updated Secretary's Environmental Assessment Requirements (SEARs) ensure the scope is right for the EIS now includes:

Alternate workers accommodation

Engaging and studying since April

440MW capability

Same project footprint to generate as much energy as we can 385MW/8hours up to 430MW but engineering rating of 440MW



Pre-Submission EIS Consultation Program

Week 1 6 – 10 Oct	Week 2 13-17 Oct	Week 3 20 -24 Oct	Week 4 27-31 Oct	Week 5 3- 7 Nov	Week 6 10 -14 Nov
Engagement to-date cultural heritage biodiversity	Economic impact consultation (including workers accommodation)	Recreation and water impacts	Construction methodology dust, noise and vibration	Traffic and roads (construction and operations)	Wrap up we have heard during consultation

Supports early community understanding impacts and benefits before the EIS exhibition period (28+ days)
 We share some key insights from the technical and environmental studies but not the full reports
 Community can provide feedback and input – it is valuable – helps identify additional things we may need to adjust or change

We will provide summaries for engagement



Extraordinary meeting proposed

- Dedicated just to Lake Lyell Pumped Hydro
- To support the pre-EIS submission consultation
- Overview key topics, engagement activities, ways to provide feedback and input

Tuesday 30 September

6-8pm

ProjectHQ

General Discussion

Thank you