

EnergyAustralia Yallourn Pty Ltd

Monthly Air Emissions Compliance Report

March 2025



EnergyAustralia
LIGHT THE WAY

Monthly Discharge to Air Compliance Summary

Indicator	Carbon Monoxide	Oxides of Nitrogen (as NO ₂)	Particles (Total)	Sulphur Dioxide
Maximum Licence Limit (g/min)	139,000	51,600	24,100	104,000
Monthly Maximum Reported (g/min)	68,204	34,412	16,460	62,297
90th Percentile Licence Limit (g/min)	85,600	49,100	14,500	73,100
YTD Month End 90th Percentile (g/min)	19,893	23,811	12,287	38,822
Discharge to Air Licence Limit Compliance	100%	100%	100%	100%
Monitoring System Availability (%)	100%	100%	100%	100%

EPA Operating Licence Site Details

Licence Holder	EnergyAustralia Yallourn PTY LTD
Licence Number	OL000010961
Premises Address	Eastern Rd, Yallourn VIC 3825
Site Description	This licence applies to a premises, where brown coal is mined, and electricity is generated in a brown coal fired power station.
Reporting Period	March 2025
Licence Discharge Points	A1: Latitude -38.1769981; Longitude 146.345441
	A2a: Latitude -38.1769981; Longitude 146.3454416
	A2b: Latitude -38.1772303; Longitude 146.3447922
Websites	Permission Information and Performance Statements
	Types of Operating Licences
	EPA AirWatch
	Latrobe Valley Air Monitoring Network Inc.

Discharge to Air Licence Limits

Discharge Point		Indicator	Units ^[1]	90th Percentile Limit ^[2]	Maximum Limit	Monitoring Frequency
A1 A2a A2b	Bubble Limit A1, A2a, A2b	Carbon Monoxide	g/min	85,600	139,000	Continuous
		Oxides of Nitrogen (as NO ₂)	g/min	49,100	51,600	Continuous
		Particles (Total)	g/min	14,500	24,100	Continuous
		Sulfur Dioxide	g/min	73,100	104,000	Continuous

[1] g/min =grams per minute 30-minute average

[2] 90th percentile limits are based on a 12-month rolling average

Monthly Air Emissions Daily Performance

Indicator	Carbon Monoxide Daily Maximum (g/min)	Oxides of Nitrogen (as NO ₂) Daily Maximum (g/min)	Particles (Total) [3] Daily Maximum (g/min)	Sulfur Dioxide Daily Maximum (g/min)
Maximum Limits	139,000	51,600	24,100	104,000
01-Mar-25	16,016	18,506	11,006	50,355
02-Mar-25	31,524	21,784	10,406	44,005
03-Mar-25	36,733	25,019	13,477	49,398
04-Mar-25	25,210	27,181	13,382	42,201
05-Mar-25	31,324	24,984	13,248	39,529
06-Mar-25	20,235	16,977	8,283	28,748
07-Mar-25	19,473	17,968	10,012	35,058
08-Mar-25	16,923	18,527	9,440	31,013
09-Mar-25	24,720	19,759	9,279	29,562
10-Mar-25	17,870	19,937	11,452	37,249
11-Mar-25	58,515	22,179	13,239	39,226
12-Mar-25	43,138	29,352	13,563	62,297
13-Mar-25	35,937	24,773	14,220	57,943
14-Mar-25	26,180	27,009	13,416	57,376
15-Mar-25	68,204	34,412	14,778	58,023
16-Mar-25	30,414	20,492	13,860	53,568
17-Mar-25	29,683	25,757	16,319	49,069
18-Mar-25	33,747	25,635	16,460	47,892
19-Mar-25	35,121	26,674	15,921	42,183
20-Mar-25	47,052	22,997	16,423	36,772
21-Mar-25	24,523	19,513	15,644	27,383
22-Mar-25	41,012	18,864	11,260	26,523
23-Mar-25	23,835	21,872	11,829	24,294
24-Mar-25	26,672	20,346	11,946	21,214
25-Mar-25	27,356	20,407	12,406	21,186
26-Mar-25	24,846	19,291	9,820	23,137
27-Mar-25	28,635	18,453	10,119	23,964
28-Mar-25	12,491	12,205	6,737	15,158
29-Mar-25	12,828	11,355	5,789	15,270
30-Mar-25	24,493	11,522	8,111	20,177
31-Mar-25	24,497	12,405	6,252	24,726

[3] In accordance with licence condition LI_DA1.10.3 & and LI_DA1.10.4 the discharge limits for particles do not apply during the plant start-up and shut-down or the accidental failure of major operating equipment and has been excluded from this daily total.

Air Emissions 90th Percentile Performance ^[2]

	Carbon Monoxide (g/min)	Oxides of Nitrogen (as NO ₂) (g/min)	Particulate Matter (g/min) (Total) ^[3]	Sulfur Dioxide (g/min)
90th Percentile Licence Limits	85,600	49,100	14,500	73,100
90th Percentile (Month End)	19,893	23,811	12,287	38,822

[2] 90th percentile limits are based on a 12-month rolling average

[3] In accordance with licence condition LI_DA1.10.3 & and LI _DA1.10.4 the discharge limits for particles do not apply during the plant start-up and shut-down or the accidental failure of major operating equipment and has been excluded from this daily total.

Monthly Data Explanation

Licence Limit Exceedances

This table provides a summary and explanation of exceedances of air discharge limits

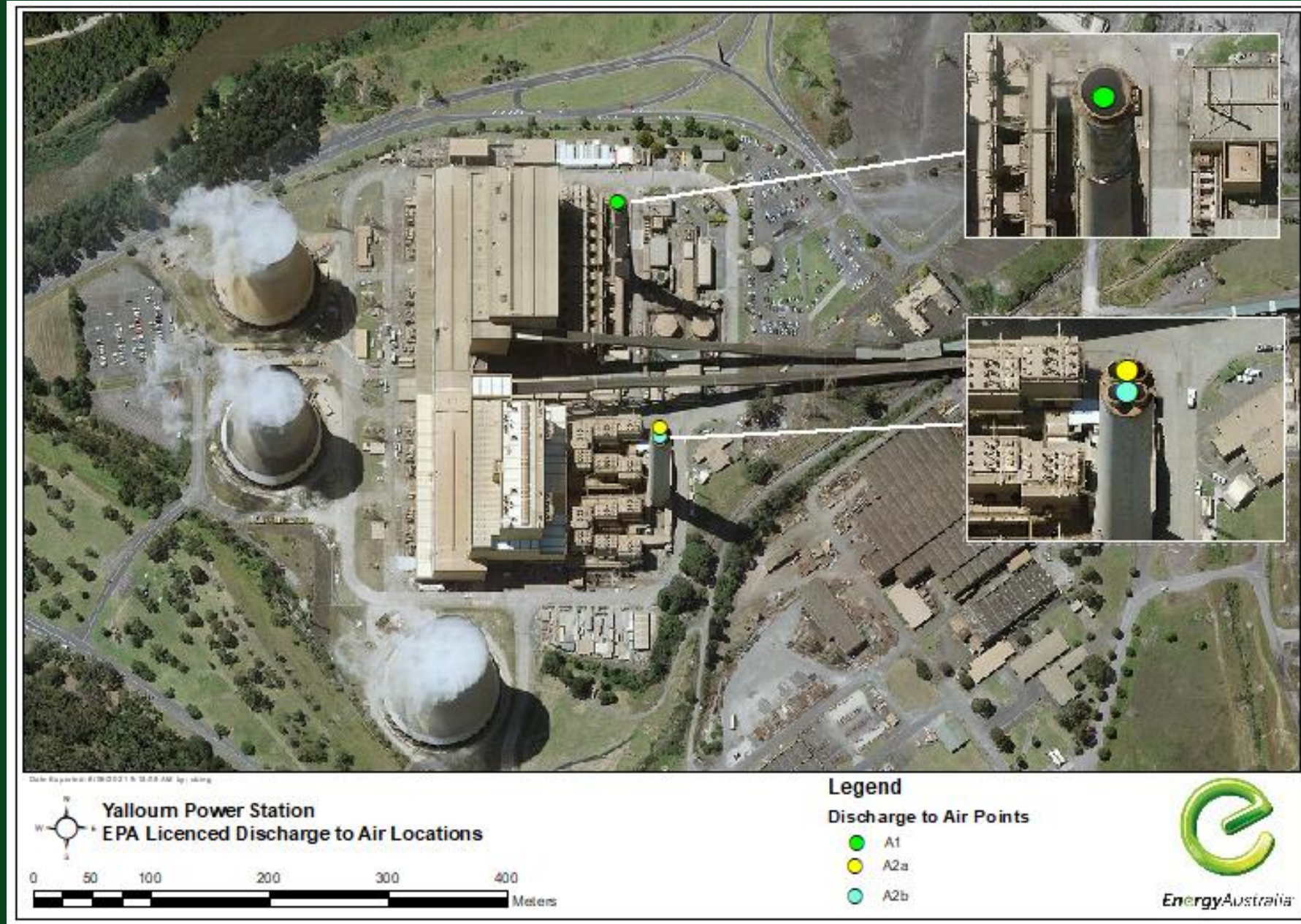
Date	Indicator Exceeded	Location (A1, A2a, A2b)	Explanation
N/A	N/A	N/A	No exceedances of licence conditions were reported for the month.

Monitoring Systems Availability

This table provides a summary of missing data periods requiring substitutions used for determination of daily compliance status

Date/Time	Loss of Availability (% of month)	Indicator	Location (A1, A2a, A2b)	Explanation
N/A	N/A	N/A	N/A	No Data losses were reported for the month.

Yallourn Power Station - Licenced Discharge to Air Points



March 2025