



Enhance Place Pty Limited

ABN: 31 077 105 867

REDUCED ANNUAL COMMUNITY CONSULTATION REPORT

Exploration Licence 7621

Prepared by

Enhance Place Pty Limited

1 October 2023

TITLE BLOCK


Report Type:	Annual
Prospecting Title Number:	EL7621
Authority Holder	Enhance Place Pty Ltd
Grant Date:	1st October 2010
Expiry Date:	1st October 2024
Authority Operator:	Enhance Place Pty Ltd
Project Name:	Pine Dale Mine – Stage 2
Reporting Period:	1st October 2022 to 1st October 2023
Date of Report:	October 2023
Author(s):	Troy Saunders Consulting Manager 35 Foley Place Sinnamon Park 4073
Technical Manager:	Graham Goodwin Mining Engineering Manager 0418 830 598
Verification Signature:	



TABLE OF CONTENTS

1. EXECUTIVE SUMMARY	1
2. CONSULTATION COMPLETED IN REPORTING PERIOD.....	2
3. OUTCOMES OF CONSULTATION	2
4. PROPOSED FUTURE CONSULTATION	2
5. ENQUIRIES AND COMPLAINTS RECEIVED IN REPORTING PERIOD.....	3

LIST OF APPENDICIES

Appendix A – Plans

1. EXECUTIVE SUMMARY

Energy Australia (EA) owns Enhance Place Pty Ltd (Enhance Place) which operates the Pine Dale Coal Mine near Lithgow in the Western Coalfields of New South Wales. Exploration License 7621 (EL7621) covers the areas to the north and west of Enhance Place mining leases (refer to plan attached at Annexure A). Pine Dale Mine is currently in care and maintenance after exhaustion of reserves within approved limits. During the reporting period no on-ground exploration activities have occurred and consequently limited community consultation has been undertaken. Considering limited activities are proposed in the next reporting period this report is deemed a reduced community consultation report.

Enhance Place actively participates in formal engagement activities by means of the Energy Australia Regional Community Consultative Committee (CCC) meetings, the minutes of which are publicly available to view on the EA website under Pine Dale Mine: www.energyaustralia.com.au.

Since being acquired by EA in 2012, Enhance Place has also continued to explore further opportunities for its community engagement processes through the development of stakeholder relationships with neighbouring landholders, Government, and surrounding industry.

The ongoing stakeholder engagement process aims at enhancing the potential benefits associated with the approved operations of Pine Dale at the local and regional level. Current stakeholder engagement methods employed by Enhance Place are provided in Table 1.

Table 1 – Pine Dale Mine Existing Stakeholder Engagement Channels

Activity	Details
Community Engagement and Communications	<ul style="list-style-type: none"> • CCC meeting • Near neighbour consultation as required • State and local Government briefings and meetings as required • Employee briefings
Community Issues Management	<ul style="list-style-type: none"> • Community contact line • Near neighbour engagement • Issue response procedures • Reporting of community complaints / concerns to the CCC, in the Annual Environmental Management Report (AEMR), and on the parent company Website
Community Support	<ul style="list-style-type: none"> • Local sponsorships through parent company Energy Australia
Environmental Monitoring and Management	<ul style="list-style-type: none"> • Environmental impact monitoring • Environmental management procedures • AEMR (Annual Review) reporting

2. CONSULTATION COMPLETED IN REPORTING PERIOD

Minimal stakeholder consultation specific to EL7621 was undertaken during the reporting period as no surface disturbance exploration activities or drilling programs were carried out during this time. Exploration activities for areas covered by EL7621 during the reporting period included;

- Scoping of the pre-feasibility work
- Scoping of the Environmental Impact Study.

Communication for information regarding E7621 was via updates at CCC meetings. These meetings focused on informing stakeholders on activities at the Pine Dale mine and progress toward future development plans at the site. Three meetings were held during the reporting period, December 2022 and April 2023 and July 2023. As of July 2018, the Pinedale Mine CCC has been combined into a broader Energy Australia CCC (as approved by the Department of Planning) that covers projects at the Pinedale Mine (including EL7621), Mt Piper Power Station and other Energy Australia activities in the local area.

3. OUTCOMES OF CONSULTATION

As noted above, minimal stakeholder consultation specific to EL7621 was required or undertaken during the reporting period due to the nature of the exploration activities and the stage of development of the project.

Community members remain interested in plans for the future development of the mine, and this is generally the focus of discussions at the CCC meetings. No issues were raised regarding EL7621 in the CCC meetings.

4. PROPOSED FUTURE CONSULTATION

The proposed future consultation for EL7621 will be based on the intended progression of the exploration lease to a joint mining project with Centennial. The high-level steps to achieve this progression are listed below.

- Commence a pre-feasibility study for a joint Pine Dale/Neubeck's Creek project as per the recommendations from the concept feasibility study
- Complete an Environmental Impact Study for the Pine Dale/Neubeck's Creek project and apply for planning approval for the project (Noting significant stakeholder consultation would be conducted as part of the planning process)
- Commence mine development

The environmental monitoring program will continue to provide background data for the Pine Dale/Neubeck's Creek project development.

All future community consultation in relation to the planning for and conduct of prospecting operations authorised under EL7621 will be undertaken in accordance with the licence conditions. Engagement with appropriate local and regulator stakeholders will be undertaken where necessary.

Enhance Place maintains focus on progressing Stage 2 of the Extension at the Pine Dale Mine combined with Neubeck's Creek which will see mining operations extend to the north, east and



west of the current mining position. A full planning process, incorporating extensive community consultation will be required before this can proceed.

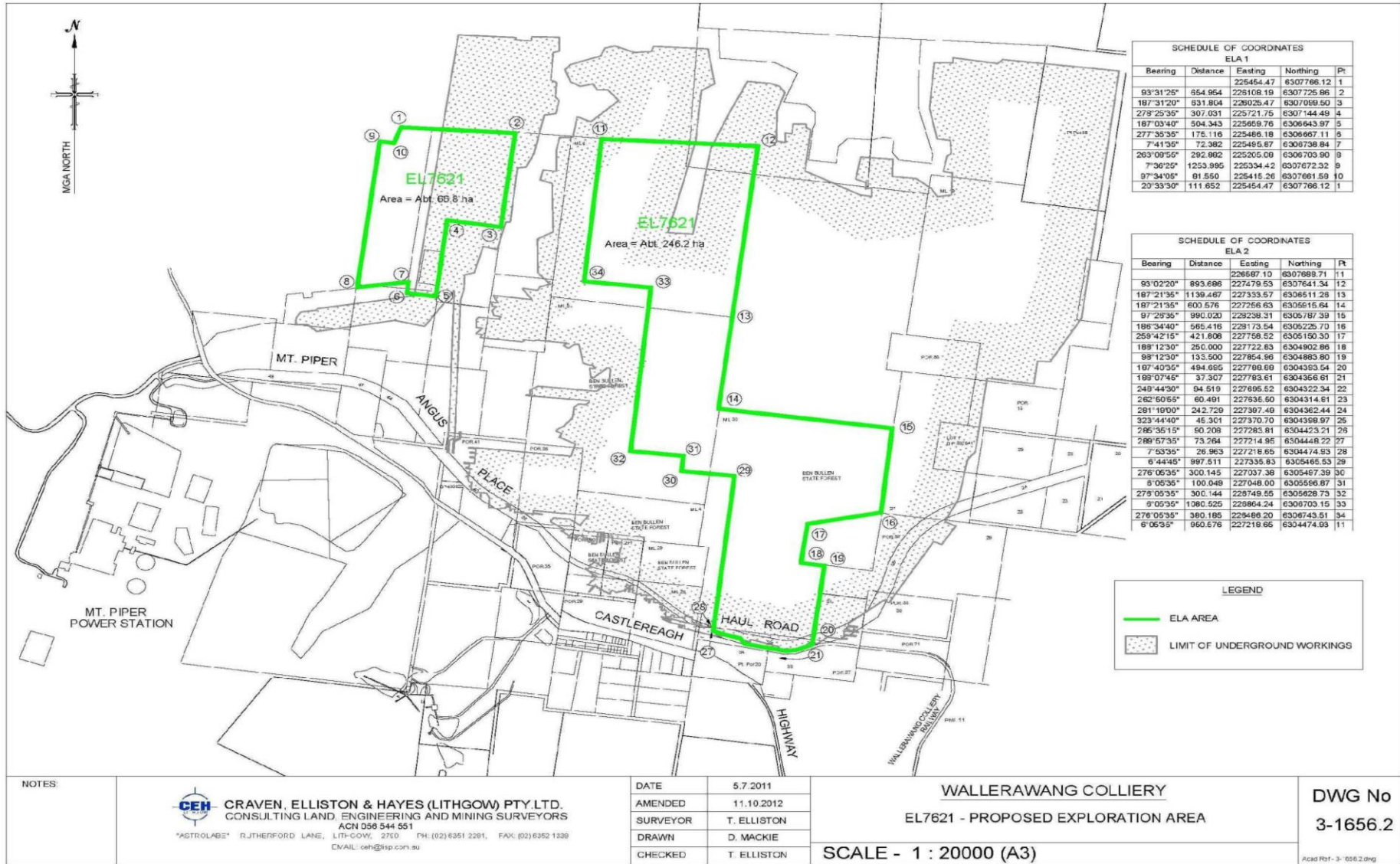
5. ENQUIRIES AND COMPLAINTS RECEIVED IN REPORTING PERIOD

Enhance Place maintains a complaint register to record and respond to complaints received from the community. Complaints are publicly available to view on the EA website under Pine Dale Mine: www.energyaustralia.com.au.

There were no complaints received in the reporting period for EL 7621.

Appendix A - Plans

Plan 1 – EL7621 location map and boundary



Plan 2 – Enhance Place Mine & Pine Dale Mine Regional Locality

