

Meeting notes

EnergyAustralia

Project	EnergyAustralia Lithgow CCC	Date	18 July 2022
Chair	Brendan Blakeley	Recorder	Ella Burgess
Attendees	Julie Favell, CCC member Jim Whitty, CCC member Alex Preema, CCC member Steve Marshall, EnergyAustralia Ben Eastwood, EnergyAustralia Mick Hanly, EnergyAustralia Observers: Rob White representing Concerned Local Citizens group (CLC)	Apologies	Rob Cluff, CCC member Clr Cass Coleman, CCC member Clr Maree Statham, CCC member

Item	Discussion Point	Actions
1.	Welcome and introductions <ul style="list-style-type: none">- The meeting began at 5.04pm.- The Chair welcomed all members and acknowledged Country, noting that Rob White was attending as an observer.- The Chair ran through the agenda for the meeting and noted apologies.	
2.	Review of previous meeting minutes <ul style="list-style-type: none">- The Chair called for comments on the previous meeting minutes.<ul style="list-style-type: none">- No comments were noted, the meeting minutes were adopted.- Julie Favell requested printed copy. This was provided to her on the night <p>Responses to Member questions received prior to the CCC meeting</p> <p><i>When does the Pine Dale Rehab Plan need to be finalised and submitted? What has been ID required to action i.e. what are the current risks ID with risk chart / PD Rehab plan?</i></p> <ul style="list-style-type: none">- The RMP for all mine sites in NSW is required to be submitted to the Department of Environment and Planning –Resource Regulator (DPE-RR) by 31 July 2022.- The PDM RMP is based on the previously approved Mining Operations Plan, which was a very similar document. The DPE-RR has recently released a new set of compliance and reporting requirements for rehabilitation (known as the Rehab Reforms) through the development of a new regulation under the Mining Act 1992. The Mining Amendment (Standard Conditions of Mining Leases –Rehabilitation) Regulation 2021 sets out the mandatory requirements under the new conditions. There is a comprehensive list of the rehabilitation risks and the associated mitigation controls outlined in the RMP and associated risk assessment. <p><i>Is it still the intention for EA to retain the existing Pine Dale/ Yarraboldy mining leases/ operational that have been approved for power station coal supplies, or is EA seeking other sources of coal apart from local current contracts?</i></p> <ul style="list-style-type: none">- EnergyAustralia intends to retain the mining authorities associated with PDM at this time. The coal reserves approved for extraction and delivery to Mt Piper Power Station have been exhausted and PDM is currently in care and maintenance. The	

Item	Discussion Point	Actions
	<p>feasibility of any future mining activities is the subject of ongoing investigation and assessment.</p> <ul style="list-style-type: none"> - EnergyAustralia continues to consider all available and feasible coal suppliers to secure the future of Mt Piper Power Station and provide stability to the national grid. 	
3.	<p>Mount Piper update</p> <p>Steve gave an overview of Mt Piper, the recent history of the power plant and current operations on site today.</p> <p>See slides 9, 10 and 11 of the presentation.</p> <ul style="list-style-type: none"> - Steve noted that the power station is still receiving most of its coal from the Springvale Coal mine. <p>Steve gave an overview of the National Electricity Market (NEM)</p> <p>See slide 12 of the presentation.</p> <ul style="list-style-type: none"> - Everything being located on the Eastern Seaboard can cause difficulties for power suppliers due to the hard and fast flow of energy. - The Australian Energy Market Operator (AEMO) keeps track of the voltage levels on particular lines. They are responsible for determining how much energy is passed into the transmission lines from the grid. 	
4.	<p>Site safety</p> <p>Steve gave an update on site safety.</p> <p>See slides 14 and 15 of the presentation.</p> <ul style="list-style-type: none"> - A three-month outage has just been completed, with an additional 700 people on day work and an additional 300 people on night work. - A scaffolding team were delayed by a week from COVID. 	
5.	<p>Water update</p> <p>Ben gave an update on water management.</p> <p>See slide 17 of the presentation.</p> <ul style="list-style-type: none"> - Oberon Dam is at 100% capacity. - Total active storage is at 98.2% <ul style="list-style-type: none"> - Lake Lyell is at 100% - Lake Wallace is at 109.4% - Thompsons Creek Dam is at 95.1% - There is a green algae alert downstream of Lake Wallace and Lake Lyell. - The water levels are being monitored via controlled releases from TCR for ongoing water level management. - A CCC member asked if there is a reason why there is blue green algae occurring in Winter. - Ben noted this can be due to the increased amounts of nutrients running off the landscape. A lot of things are mobilise from underground to above ground due to wet weather and rising groundwater levels. - There are often management challenges when all the dams are full including: <ul style="list-style-type: none"> - Lake Wallace often spills over which it is designed to do. - If Lake Lyell reaches certain water levels, there are alarms that are triggered. If the dam goes into white alert, the regulatory authorities are alerted. In the past 12 months, there have been 4 white alerts. Lake Lyell was spilling contents 	

Item	Discussion Point	Actions
	equivalent to 4 Olympic size swimming pools per minute. Unlike Lake Lyell, Thompson's Creek is not designed to spill so must be monitored very carefully.	
6.	<p>Market update</p> <p>Steve gave an overview of the market update</p> <ul style="list-style-type: none"> - No notes were taken due to commercial sensitivity. 	
7.	<p>Operations site update</p> <p>Steve gave an overview of the operations update.</p> <p>See slide 21 and 23 of the presentation.</p> <ul style="list-style-type: none"> - Steve noted that the energy deficit is now occurring in Winter as opposed to Summer. Retailers are having to buy electricity at a price higher than what they can sell it at. 1460 is the total output possible in Unit 1 and 2. On site, Mount Piper is running consistently at 1100, however it is dependent on demand. For example, in Summer the total output is less as more people rely on solar power. - Fuel supply <p>Springvale is currently mining and performing well. The stockpile is stable and is expected to slowly rise over the short term.</p> <ul style="list-style-type: none"> - Mount Piper Unit 1 <p>Currently operating reliably, available for nameplate capacity. A strong demand in May saw Mount Piper Unit 1 at 94% capacity.</p> <ul style="list-style-type: none"> - Mount Pipe Unit 2 <p>A major outage has successfully been completed. Before winter, Unit 2 was at commercial load.</p> <ul style="list-style-type: none"> - Water Treatment Facility <p>Operational, treating Springvale water, and typically all water produced and consumed by Mount Piper.</p> <p>Steve gave an overview of EnergyAustralia's announcement to rate changes from 1 August 2022.</p> <p>See slide 23 of the presentation.</p>	
8.	<p>Pine Dale Mine and Enhance Place</p> <p>Ben gave an update on Pine Dale and Enhance Place.</p> <p>See slide 36 of the presentation.</p> <ul style="list-style-type: none"> - There were no non compliances recorded at the Pine Dale Mine. - Future mining activities continue to be evaluated and are in a holding pattern. - Energy Australia has submit an application to relinquish Mining Leases associated with the former Enhance Place Mine in Q2 2022. - Monthly reports as required under the Pine Dale EPL have been uploaded to the EnergyAustralia website and can be found here: https://www.energyaustralia.com.au/about-us/energy-generation/pine-dale-coal-mine/pine-dale-NSW-EPA-reports - An application to relinquish Mining Leases associated with the former Enhance Place Mine has been submitted to the Resource Regulator. - The Pine Dale Mine Rehabilitation Management Plan has been updated in accordance with the new requirements under the Mining Act and Regulations. <p><i>Julie asked if the Enhance Place Mine will affect Area A?</i></p> <ul style="list-style-type: none"> - Ben stated Area A at pine Dale Mine will not be affected as the relinquishment only relates to property on the Southern side of the Castlereagh Highway. - The Pine Dale Rehabilitation Management Plan has been revised and updated in accordance with the requirements under the Mining Act and Regulations. 	

Item	Discussion Point	Actions
	<ul style="list-style-type: none"> - Higher rainfall has had a positive effect on growth on the visual bund and general rehabilitated areas over the period. <p><i>Julie asked about the butterflies on that site</i></p> <ul style="list-style-type: none"> - Ben noted that Energy Australia was no longer required to monitor the site as mining was not being carried out. <p><i>Julie asked why monitoring had stopped? Is anyone from the Department coming to check the site?</i></p> <ul style="list-style-type: none"> - Ben added monitoring has stopped because mining has stopped, noting EnergyAustralia is not aware of anyone from any agency checking the site recently. 	
9.	<p>Community update</p> <p>Mick gave a community update.</p> <p>See slides 25- 29 of the presentation.</p> <ul style="list-style-type: none"> - Round 1 of the Community Grants saw 35 submissions and approximately \$30,000 distributed amongst various groups in the community. This round of Community Grants submissions were the most that EnergyAustralia has received in a long time. - The Energy Expo is about to be re-opened to the public for the first time since 2019 as well as site tours. - Round 2 of Community Grants open 1 August 2022 - Mick acknowledged the hard work over 42.5 years of service from Michelle Blackley who retired on Friday 14 July 2022. - Three EnergyAustralia apprentices graduated from the TAFE Skills Centre Apprentice program. 	
10.	<p>Lamberts North Ash Placement project</p> <p>Ben gave an overview of the Lamberts North Ash Placement project.</p> <p>See slide 31 of the presentation.</p> <p>Between October 2021 and February 2022:</p> <ul style="list-style-type: none"> - No complaints have been received - No material environmental incidents have been reported - The Operations Environmental Management Plan has been approved by the Department of Planning and Environment - The Leachate Barrier Management System has been successfully installed in Area 1A and is receiving brine conditioned ash. - The extended operating hours under emergency provisions was successful in managing and responding to the situation to avoid potential environmental impacts. - Progressive installation of the leachate barrier system will continue into Area 2. <p>Steve gave an overview of brine conditioned ash and water conditioned ash.</p> <ul style="list-style-type: none"> - What has shown to be most effective in Lamerbert's North is to control leaching at the source by putting a cap on top of the repository. It is still leaching and continuing to leach, however it has not increased due to the recent rain. 	
11.	<p>Lake Lyell Pumped Hydro Energy Storage</p> <p>Mick gave an overview of the Lake Lyell Pumped Hydro Energy Storage Project.</p> <p>See slide 33 of the presentation.</p>	

Item	Discussion Point	Actions
	<ul style="list-style-type: none"> - EnergyAustralia continues to participate in the NSW Government pumped hydro recoverable grants process. - Currently the drilling investigation Development Application is with Council for determination on 25 July. - Planning to conduct geotechnical investigations on Mt Walker in September, subject to approvals. - Planning to increase community engagement and consultation. Drop in sessions are planned for Lithgow, Wallerawang, Portland and Hartley. 	

12. **General Discussion**

Julie raised an issue with pine trees located locally that they fear could pose a bushfire threat. Julie noted they would like some of the trees culled and a proper fire break created around the remaining trees.

- Ben noted that EnergyAustralia understands the concern surrounding the fire risk, however noted that there are currently several controls already in place that are adequate for the space.
- Ben suggested that EnergyAustralia will complete having a targeted fire risk assessment for the grove of pine trees in question.
- There is a landowner in close proximity to the pine grove who does not want the pine trees tampered with.

13. **Next steps**

- The Chair suggested that meetings do not occur on Mondays due to Council commitments.
- The next meeting is tentatively scheduled for November.

The meeting closed at 6:56pm.

EnergyAustralia Lithgow Region

Community Consultative Committee

18 July 2022

Steve Marshall – Head of Mt Piper



EnergyAustralia
LIGHT THE WAY

Acknowledgement of Country

EnergyAustralia acknowledges the Wiradjuri people as the traditional custodians of the land on which we are meeting. We recognise and respect their connection to culture, land and unity.

Artwork done by Wurundjeri Traditional Owner, Mandy Nicholson

Agenda

1. Welcome and introductions
2. Review of Notes from Previous Meeting
3. Site Update from EnergyAustralia
4. Project Updates
5. General Discussion
6. Meeting Close



Welcome and Introductions

Review of Notes from Previous Meeting

Actions from Previous Meeting

No actions for EnergyAustralia arose from previous meeting.

Responses to Members Questions Received Post Meeting

When does the Pine Dale Rehab Plan Need to be Finalised and Submitted? What has been ID required to action i.e. what are the current risks ID with risk chart/PD Rehab plan?

The RMP for all mine sites in NSW is required to be submitted to the Department of Environment and Planning – Resource Regulator (DPE-RR) by 31 July 2022.

The PDM RMP is based on the previously approved Mining Operations Plan, which was a very similar document. The DPE-RR has recently released a new set of compliance and reporting requirements for rehabilitation (known as the Rehab Reforms) through the development of a new regulation under the Mining Act 1992. The Mining Amendment (Standard Conditions of Mining Leases – Rehabilitation) Regulation 2021 sets out the mandatory requirements under the new conditions. There is a comprehensive list of the rehabilitation risks and the associated mitigation controls outlined in the RMP and associated risk assessment.

Is it still the intention for EA to retain the existing Pine Dale/Yarraboldy mining leases/operational that have been approved for power station coal supplies, or is EA seeking other sources of coal apart from local current contracts?

EnergyAustralia intends to retain the mining authorities associated with PDM at this time. The coal reserves approved for extraction and delivery to Mt Piper Power Station have been exhausted and PDM is currently in care and maintenance. The feasibility of any future mining activities is the subject of ongoing investigation and assessment.

EnergyAustralia continues to consider all available and feasible coal suppliers to secure the future of Mt Piper Power Station and provide stability to the national grid.

Mount Piper Update

Mt Piper Overview

- Newest of the ECNSW 660MW fleet
- Total Generation Capacity **1430 MW**
 - Unit 1 – 730MW & Unit 2 700MW
- We are the youngest coal fired power plant in NSW and responsible for **~11%** of NSW Electricity Supply
 - Supply power to **~1.2million** people
- We manage our water supply through our two owned dams with a
 - Consumption of **~ 50ML** per day
 - Combined capacity of **60GL**
- We utilise **~ 3MT** of coal per year based on 100% availability of both units.
 - Daily use **~15KT**
 - Coal Stockpile **~ 700 KT**
- We are a zero process water discharge site

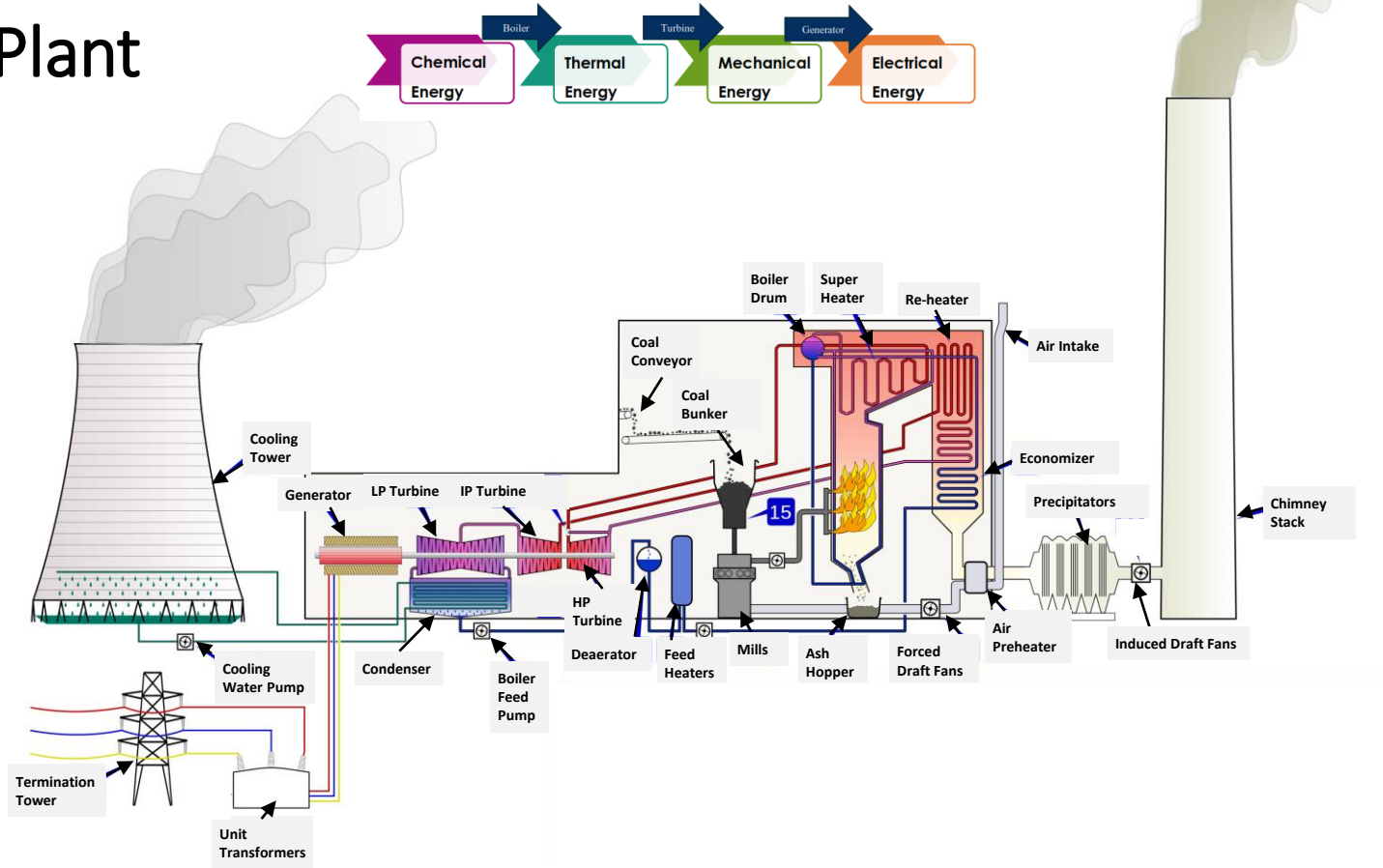


Lake Lyell Dam



Thomson's Creek Dam

How does a Power Plant work?



Mount Piper Site



Stack

Cooling Towers

Fuel Oil

Water & Chemical Plant

Boilers

Turbines

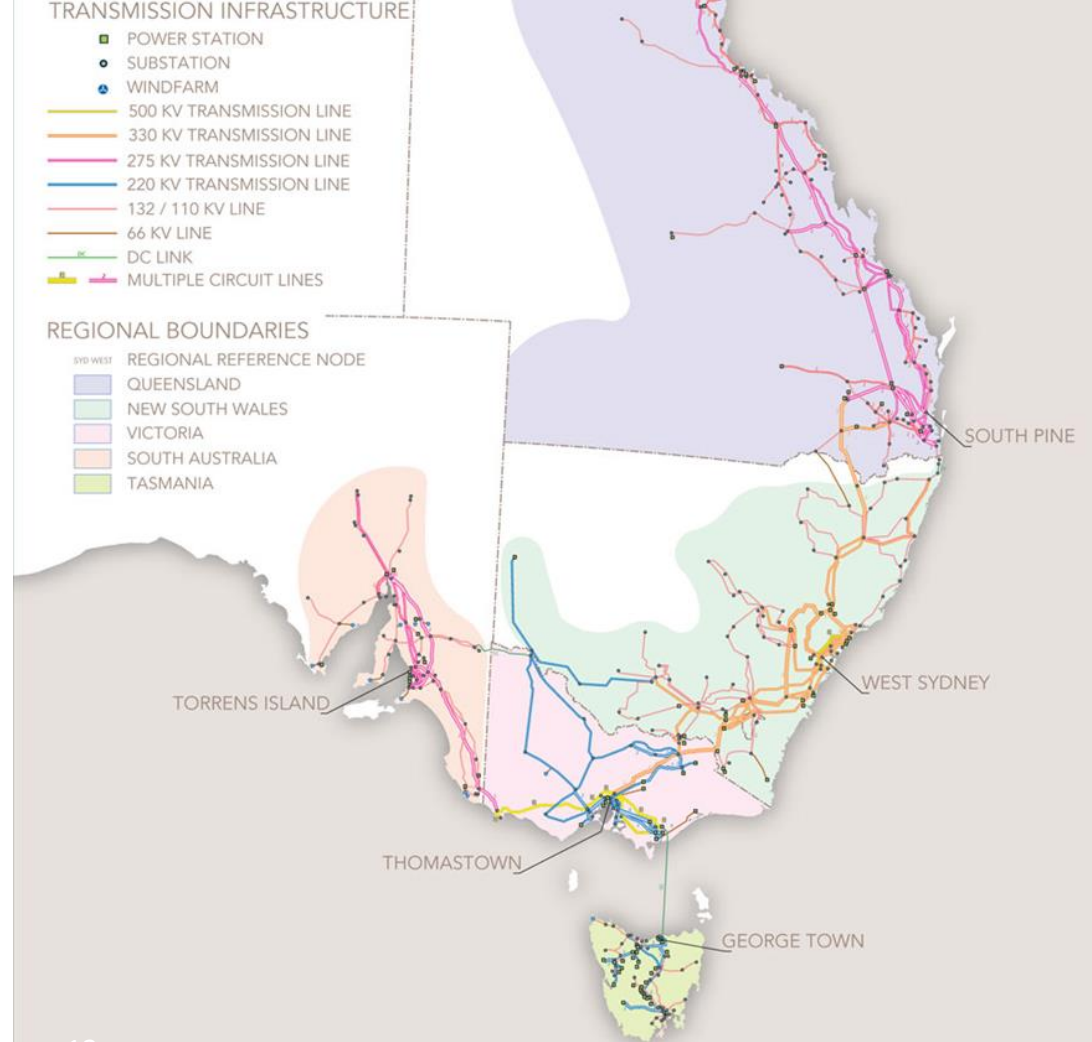
Ash Plant

Onsite Contractor Offices

YOU
ARE
HERE

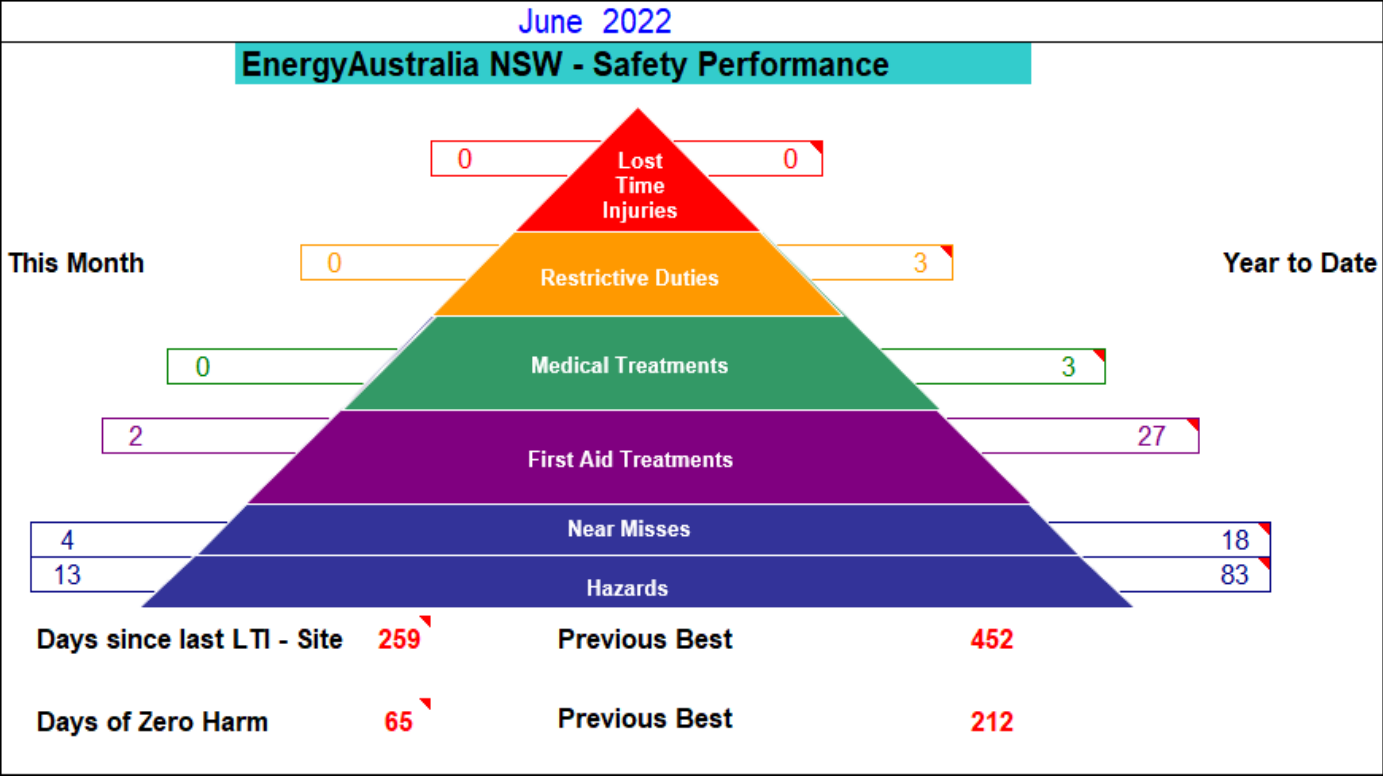
National Electricity Market (NEM)

- Mt Piper production goes to the switchyard and is distributed through the transmission lines.
- Australia is Worlds 9th largest energy producer
- Australia has the Worlds largest interconnected power system – over 5000 km's from QLD to SA



Site Safety

Site Safety – 2022

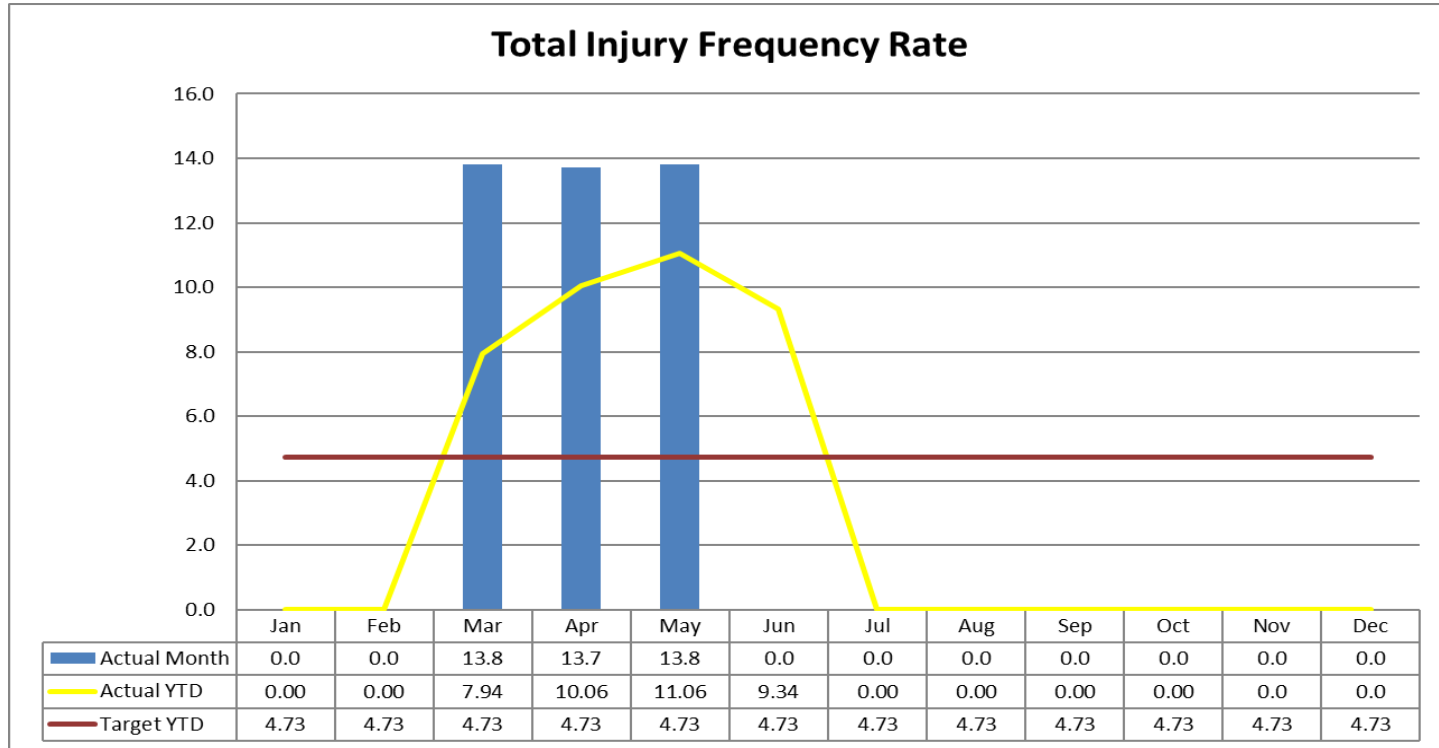


Site Safety

YTD – TIFR (As of 30th June)

Actual = 9.34

Target = 4.73



Water Management

Update on Water Management

- Oberon Dam level is at 100%
- Total Active Storage is at 98.2% with:
 - Lake Lyell at 100%
 - Lake Wallace at 109.4%
 - Thompsons Creek Dam at 95.1%
- Green algae alert downstream Lake Wallace & Lake Lyell
- Controlled release from TCR is ongoing for level management



Market Update

Operation in the Market

Redacted

Operations (Site) Update

Operations update – June

Fuel Supply

Springvale currently mining, and performing well.
Stockpile currently stable, and expecting to slowly rise over coming weeks and months

Mount Piper Unit 1

Operating reliably, available for nameplate capacity.

Strong demand in May saw MP1 at 94% capacity.

Mount Piper Unit 2

Major Outage completed successfully.

At commercial load before winter.

Water Treatment Facility

Operational, treating Springvale water, and typically all water produced consumed by Mount Piper.



Market update – June

Redacted



Operations Update June

News

EnergyAustralia announces rate changes from 1 August 2022

July 5, 2022

Key points

- Gas and electricity prices for residential and business customers on variable rate contracts with EnergyAustralia are increasing from 1 August 2022.
- Pricing changes reflect the rise in wholesale market gas and electricity costs, that have more than doubled over the past year in some states, driven by supply issues.
- More than a third of EnergyAustralia's customers are on fixed rate contracts and are protected from price rises during their contract term.
- More cost effective energy plans with EnergyAustralia may be available for customers.
- EnergyAustralia customers experiencing financial difficulty are encouraged to reach out to us for support. Our dedicated residential *EnergyAssist* support team can be contacted on 133 466, while our small business customers can call the *Rapid Business Assist* team on 1800 146 749.

Community Update

Community

- Round 1 Community Grants 35 submissions received. Distributed approx \$30,000

Blinky Bill Preschool	Technology Program
Linc Legends	Tools for People with Disability
Lithgow & District Model Railway Club	Upgrade Outdoor Area
Lithgow District Car Club	Fencing
Lithgow High School	Donation of Furniture
Meadow Flat Primary School	Little Learners Reading Program
Portland & District Olympic Pool	Upgrading Gardening Equipment
Rainbow Lithgow	IDAHOBIT Exhibition and Music Festival
St Joseph's Primary School	New Seating
Steamworks Lithgow Valley Regional Science Hub	Energising the hub
Wallerawang Memorial Men's Shed	Tools

Community

Supported Events:

- Lithglow Fireworks
- Lithgow Show
- Sea Bees Fishing Tournament on Lake Lyell
- The Foundations June Long Weekend Bonfire and Fireworks

Upcoming Events:

- Re-opening of Energy Expo for Tours – July 20
- Round 2 2022 Community Grants Open August 1 - 26
- Daffodils @ Rydal in September

Community

We wish to recognise the support and contribution of Sue Graves who passed away on 21 June. She was a member of the original Western Community Reference Group for over 10 Years.

Sue worked actively in the Lithgow community on Lithgow Council, various water catchment committees, Anglicare and the successful Lithgow Tidy Towns among her many interests. She was a firm advocate for the environment and the community of Lithgow.

She will be fondly remembered.



Michelle Blackley Retirement

Michelle left EnergyAustralia on Friday 14 July after 42½ years service. Michelle has been a member of the CCC and the original Community Reference Group since their inception. She has a wealth of experience within the community space and will be sorely missed. We held a morning tea on Wednesday to bid her adieu.

She was very sorry she couldn't say goodbye in person.



People

- Three of our apprentices graduated from the TAFE Skills Centre Apprentice program on 30 June. Congratulations to Ethan Toole, Maddox Horton and Oscar Gordon.



- We have appointed a Environment Officer and Operational Technology Engineer.
- We currently also have an Electrical Engineering vacation student doing his placement with us.
- We are advertising for multiple site based positions including Admin Trainee, Warehouse Trainee, Process Controls Engineer and Controls & Instrument Engineer.

Lamberts North Ash Placement Project

Lamberts North Ash Placement Project


October 2021 to February 2022

- No complaints received
- No material environmental incidents reported
- Operations Environmental Management Plan as been approved by DPE
- Leachate Barrier Management System has been successfully installed in Area 1A
- The extended operating hours under emergency provisions was successful in managing and responding to this situation to avoid potential environment impacts
- Progressive installation of the leachate barrier system will continue into area 2

	Brine Conditioned Ash (ton)	Water Conditioned Ash (ton)
Mt Piper Ash Repository	25,393.50	52,727.70
Lamberts North Ash Repository	29,815.50	0

Pumped Hydro Update

Project update

1. Continue to participate in NSW Government pumped hydro recoverable grants process
 2. Drilling investigation Development Application with Council on the 25th July for determination
 3. Very close to selecting a drilling contractor and to signing contracts with design and engineering partner
 4. Conduct geotechnical investigations on Mt Walker in September (subject to approvals)
 5. Planning to ramp up activities in community to continue to listen and answer questions
 6. Drop-In sessions planned for Lithgow, Wallerawang, Portland and Hartley
 7. Beginning our work on community benefit sharing mechanisms.
- 

EnergyAustralia Exploration Drilling Program

Development Application 070/22 before Lithgow City Council

EnergyAustralia, owner of the Mt Piper power station, advises that it has submitted Development Application 070/22 to Lithgow City Council to undertake an exploration drilling program on land it owns near Lake Lyell.

The application seeks approval to drill nine boreholes, required to better understand ground conditions as part of early-stage feasibility works for the proposed Lake Lyell Pumped Hydro project.

Exploration drilling is required to help understand the geology of the area and inform studies in assessing the suitability of the site for any future development. The environmental impact of this work will be low. A statement of environmental effects for the exploration drilling program has been prepared according to Lithgow City Council guidelines and forms part of this submission.

Following these initial investigations, a full assessment of the project's feasibility will be completed. EnergyAustralia will continue to engage with the community and seek input. If the project is considered feasible, an application would be made to the NSW Department of Planning and Environment for the proposed Lake Lyell Pumped Hydro project.

More information

For further information, please see energyaustralia.com.au/about-us/energy-generation/energy-projects/lake-lyell-pumped-hydro.

To get in contact with the project team – please email community@energyaustralia.com.au.



Pine Dale Mine and Enhance Place

Pine Dale Mine and Enhance Place

- No non compliances at the Pine Dale Mine
- No community complaints recorded for Enhance Place nor Pine Dale Mine
- Monthly reports as required under the Pine Dale EPL have been uploaded onto the EnergyAustralia website
- Continues in care and maintenance
- Future mining activities continue to be evaluated
- An application to relinquish Mining Leases associated with the former Enhance Place Mine has been submitted to the Resource Regulator
- The Pine Dale Mine Rehabilitation Management Plan has been updated in accordance with the new requirements under the Mining Act and Regulations



Thank you



EnergyAustralia
LIGHT THE WAY