

PUBLIC NOTICE



EnergyAustralia
LIGHT THE WAY

EnergyAustralia Yallourn Pty Ltd Draft Declared Mine Rehabilitation Plan (DMRP)

Mineral Resources (Sustainable Development) Act 1990 (Vic), EnergyAustralia Yallourn Pty Ltd in accordance with regulation 64H of the Mineral Resources (Sustainable Development) (Mineral Industries) Regulations 2019 (Vic).

EnergyAustralia Yallourn Pty Ltd (ABN 47 065 325 224) is the licensee of MIN5003 (5,173 ha); MIN5216 (152 ha); and MIN5304 (83 ha) collectively known as the Yallourn Mine.

The Yallourn Mine provides coal to the Yallourn Power Station which will close in mid-2028. The Draft DMRP provides detail on the licensee's vision to transform the Yallourn site into a landscape that enables ongoing prosperity and amenity for all. One that is an example of what can be achieved when business, government, communities, and custodians of the land work together.

The key elements of the Draft DMRP are:

- Rehabilitation Vision (Post-Mining Land Use)
- Closure Objectives and Criteria
- Traditional Owner Partnership
- Stakeholder Engagement
- Risk Assessment
- Implementation Plan
- Post-Closure Plan

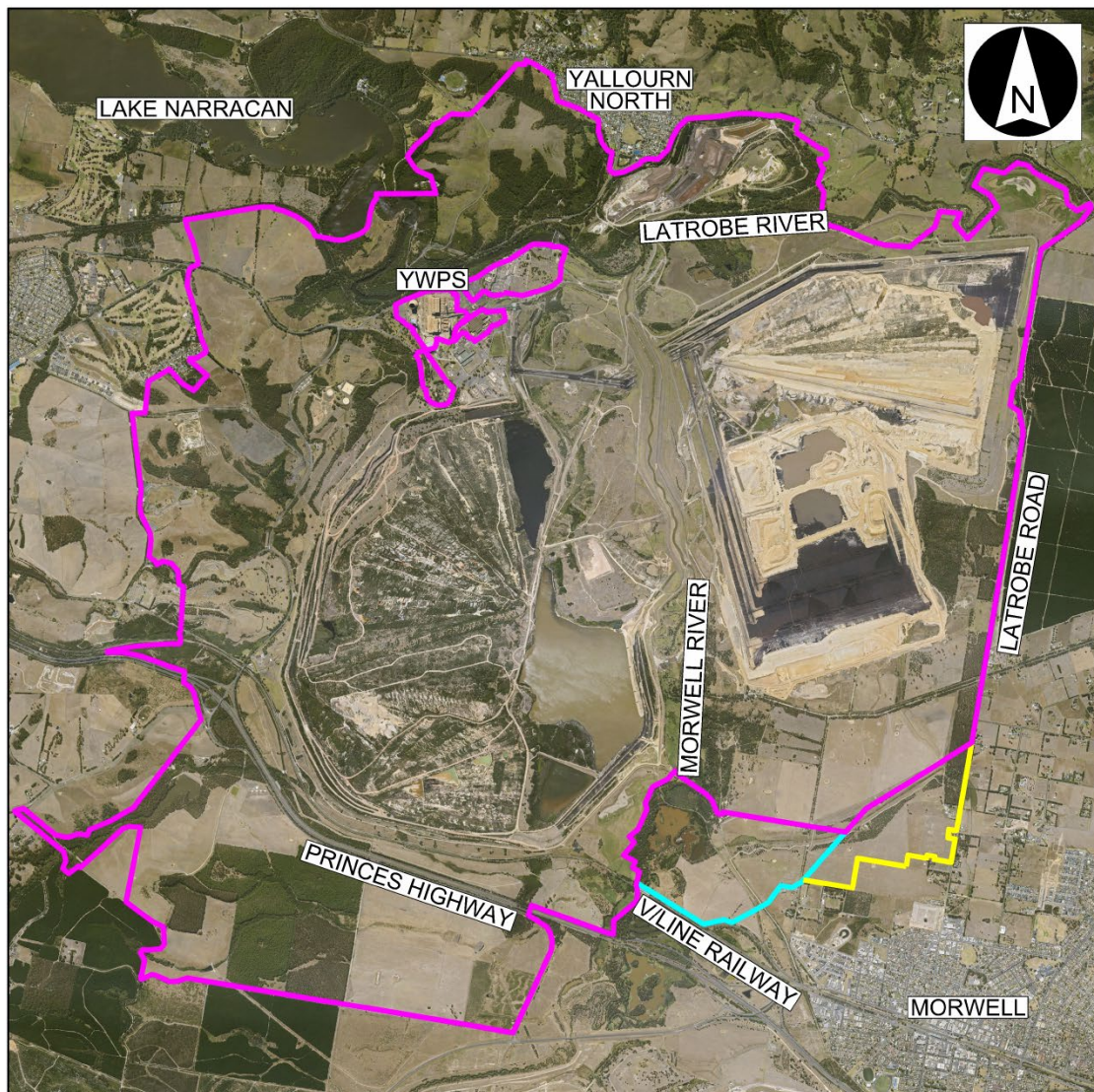
The Draft DMRP also contains information in relation to the licensee's system for managing the impacts of the plan on the community and the environment and its plan for ongoing consultation with the community and stakeholders.

The Draft DMRP will be on public exhibition for sixty (60) days between **18 / 6 / 2025** and **18 / 8 / 2025**. The licensee invites and is seeking submissions from the public and other interested parties on the Draft DMRP.

Submissions can be made by anyone within the 60 days that the Draft DMRP is on public exhibition via the website **www.yallourntransition.com.au** or by writing directly to the licensee at **community.yallourn@energyaustralia.com.au** or by mail to EnergyAustralia Yallourn, PO Box 444, Moe, Victoria, 3825.

For more information on the Draft DMRP, please contact us at:

Address: EnergyAustralia Community Hub, 228 Commercial Road Morwell
Postal Address: EnergyAustralia Yallourn, PO Box 444, Moe VIC 3825.
Website: www.yallourntransition.com.au
Email: community.yallourn@energyaustralia.com.au
Phone: 1800 574 947



YALLOURN MINE

ORIGINAL SCALE 1 : 12 500
METRES 500 250 0 500 1000 1500 2000 2500

MINE LICENCE BOUNDARY No 5003 ———
MINE LICENCE BOUNDARY No 5216 ———
MINE LICENCE BOUNDARY No 5304 ———