

**07\_0124**

**Operation Compliance Report 2**

18<sup>th</sup> June 2025 – 18<sup>th</sup> June 2026

Revision: A

Date Prepared: 4/06/2026

Declared by Kyle Brown – Environment &  
Safety Specialist



**EnergyAustralia**

LIGHT THE WAY

# Document control record

Document control					
<b>Report title</b>		Operation Compliance Report 2			
<b>Project number</b>		07_0124			
Rev	Date		Revision details/status	Author	Approver
A	2026-06-04		Draft for review/approval	KB	
<b>Current revision</b>			A		

Approval			
<b>Author</b>		<b>Approver</b>	
<b>Name</b>	Kyle Brown	<b>Name</b>	
<b>Title</b>	Environment & Safety Specialist	<b>Title</b>	

# 1 Executive Summary

Energy Australia owns the Tallawarra Power Station site which is located in Yallah, on the western foreshore of Lake Illawarra in New South Wales, approximately 13 kilometres southwest of Wollongong (Lot 109, DP 1050302, Yallah Bay Road, Yallah, Wollongong local government area). The site currently has the gas fired Tallawarra A combined cycle gas turbine (CCGT) power station operating and the gas fired Tallawarra B open cycle gas turbine (OCGT) power station. The Tallawarra A and B power stations are operated by EnergyAustralia as a wholly owned subsidiary of CLP Holdings Ltd.

The existing Tallawarra A gas-fired power station's generation capacity is 460 MW, and before the Tallawarra gas-fired power station commenced operations in January 2009, the site operated as a 320MW coal-fired power station between 1954 and 1989.

Tallawarra Stage B was approved by the then Minister for Planning on 21 December 2010 and is considered Critical State Significant Infrastructure (CSSI) (CSSI 07\_0124).

In December 2020 EnergyAustralia had a second modification of the existing Project Approval. The modification provides approval to:

- extend the Project Approval lapse date by two years to December 2022, and
- amend the project description within Condition of Approval 1.5 so that a single open cycle gas turbine may be used for the power plant.

The existing Tallawarra A gas-fired power station is licensed by the NSW Environment Protection Authority (EPA) under the Protection of the Environment Operations Act 1997 (POEO Act), Environmental Protection Licence (EPL) number 555 (EPL 555), and this licence was amended on 18<sup>th</sup> June 2024 to incorporate the B unit, which commenced operation on that day, with power being supplied to the national electricity grid.

The Tallawarra Stage B approval is conditional on the adherence of the project to the conditions of consent outlined in the Project Approval. To meet the approval conditions operation compliance reports are to be submitted to the Department of Planning, Housing and Infrastructure (DPHI) at intervals, no greater than 52 weeks from the date of commencement of operation (annually) or if in care & maintenance, from the commencement date of care and maintenance (annually).

This operation compliance report assessed the project's compliance via document, records, systems, correspondence, and procedure in relation to conditions of consent associated with the Tallawarra Stage B Project during the operational phase.

Of the 92 assessable operational sub-conditions, during the reporting period 29 items were not triggered, 62 sub-conditions were deemed compliant and 1 sub-condition was deemed non-compliant.

# Contents

<b>1</b>	<b>Executive Summary</b>	<b>3</b>
<b>2</b>	<b>Introduction</b>	<b>1</b>
2.1	Background	1
2.2	Legislative context	1
2.3	Project description	1
2.4	During the reporting period	2
2.5	Roles and responsibilities	6
<b>3</b>	<b>Previous actions</b>	<b>7</b>
3.1	Actions arising from Independent Environmental Audit 5	7
3.2	Actions arising from previous Operation Compliance Report	7
<b>4</b>	<b>Compliance status summary</b>	<b>7</b>
4.1	Non-compliance summary	7
<b>5</b>	<b>Incidents</b>	<b>7</b>
5.1	Incident summary	7
<b>6</b>	<b>Complaints</b>	<b>8</b>
6.1	Complaints summary during the reporting period	8

## Appendices

- Appendix A – Compliance Table
- Appendix B – Action Status Table
- Appendix C – Compliance Report Declaration
- Appendix D – Figures and photos

## Figures

- Figure 1-1: Tallawarra A and B power stations areas
- Figure 1-2: Tallawarra Power Station clearing impact and existing environment
- Figure 1-3: Tallawarra Power Station site location and adjacent land uses

## Tables

- Table 1-1: Roles and environmental/compliance responsibilities
- Table 2-1: Action status table
- Table 3-1: Complaints summary

## 2 Introduction

### 2.1 Background

EnergyAustralia originally purchased the Tallawarra power station site to redevelop it for power generation (initially a 400MW combined cycle gas-fired energy facility) and other purposes. The 16ha site is located at Yallah Bay Road, Yallah, approximately 13 kilometres south of Wollongong, New South Wales. The site is located on the western foreshore bank of Lake Illawarra and on the lower southern slopes of Mount Brown, which rises to about 130m. The project is positioned in a historically disturbed location on the foundations of a former coal power station, which was decommissioned in 1989. The project land is owned by EnergyAustralia. The Tallawarra A power station commenced operation in January 2009 and has a generating capacity of 440MW of electricity. The Tallawarra B power station commenced operation in June 2024 and has a generating capacity of 320MW of electricity.

### 2.2 Legislative context

The Tallawarra B power station project was declared as Critical State Significant Infrastructure (CSSI) by the Minister for Planning on 26 February 2008 in accordance with section 5.13 of the *Environment Planning and Assessment Act 1979* (EP&A Act). The project (MP07-0124) was granted approval by the then Minister for Planning on 21 December 2010.

An approval modification (Mod-1) for extension of the lapse date was approved March 2016, which extended the project's approval lapse date by five years to 21 December 2020. A second approval modification (Mod-2) was approved by the Department of Planning and Environment (DPE) in December 2020. Mod-2 extended the project's approval lapse date by a further two years to December 2022 and amended several conditions of approval, including allowing for a single open cycle gas turbine to be used for the project. A third approval modification (Mod-3) allowing the use of a fuel blend containing up to 5% green hydrogen, along with the installation and operation of supporting infrastructure required to accommodate this change. This modification permits partial substitution of natural gas with renewable hydrogen.

The areas which form Tallawarra B power station is subject to consolidated Project Approval (MP07\_0124-Mod-3), which includes changes to the Project Approval from Mod-1, Mod-2 and Mod-3 approval.

Tallawarra A power station is subject to approval under Section 81 of the EP&A Act. Tallawarra A power station was granted development consent by Wollongong City Council on 2 July 1999 (No. D98/784). The areas that form Tallawarra A power station is subject to the development consent, No. D98/784. There is also a Development Consent (Application Number: SSD-60938959) that was issued in February 2024 for the development of *Tallawarra A Power Station Efficiency Upgrade*. Works commenced for this upgrade in October 2024 and were completed in January 2025.

In addition to the two approvals mentioned above, EnergyAustralia holds an Environment Protection Licence (EPL) number 555 under Section 58(5) of the *Protection of the Environment Operations Act 1997* for the site. The EPL covers the operational licence requirements for both Tallawarra A and Tallawarra B power station.

### 2.3 Project description

The Tallawarra power station is a gas fired power station that comprises of two power station plant, Tallawarra A (Unit 1 power station) and Tallawarra B (Unit 2 power station).

The Unit 1 power station commenced operation in 2009 and comprises of the following key elements:

- power station plant comprising of a combined cycle gas turbine generator;
- existing gas supply lateral;
- gas receiving station;
- electrical switchyard;

- control room;
- water treatment plant and demineralised water tanks;
- cooling water intake and outlet;
- domestic wastewater treatment and disposal system;
- surface water management system; and
- other associated infrastructure (such as administration building, workshop, internal roads, car parking, amenities).

The Unit 2 power station is immediately adjacent to the Unit 1 power station and operation commenced in mid-2024. Unit 2 power station comprises of the following key elements:

- power station plant comprising of one open cycle gas turbine generator;
- high voltage switchyard (extension) comprising high voltage connection to the unit transformers and switchgear;
- transmission line connection to the existing 132kV network;
- connecting gas pipelines, gas metering and pressure reduction station;
- potable/fire water tank;
- demineralised water tank;
- electrical module; and
- emergency diesel generator.

Figure 2-1 shows the Unit 1 and 2 power station areas within the context of the wider Tallawarra power station site.

## 2.4 During the reporting period

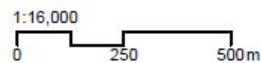
Tallawarra A and Tallawarra B power stations were both operational during the reporting period. There were no construction activities undertaken as part of the Tallawarra Stage B Gas Turbine Power Station Project (07\_0124).



**Legend**

- Unit 1 power station (Tallawarra A)
- Unit 2 power station (Tallawarra B)
- Unit 2 power station (Tallawarra B) Gas Reception Station
- Unit 2 power station (Tallawarra B) Transmission Line Easement
- Tallawarra power station site boundary
- Tallawarra Land border
- Lot boundary

Source: Aurecon, EA, LPI, ESRI



Projection: GDA 1994 MGA Zone 56

FIGURE: General project layout

Figure 2-1: Tallawarra A and B power stations areas

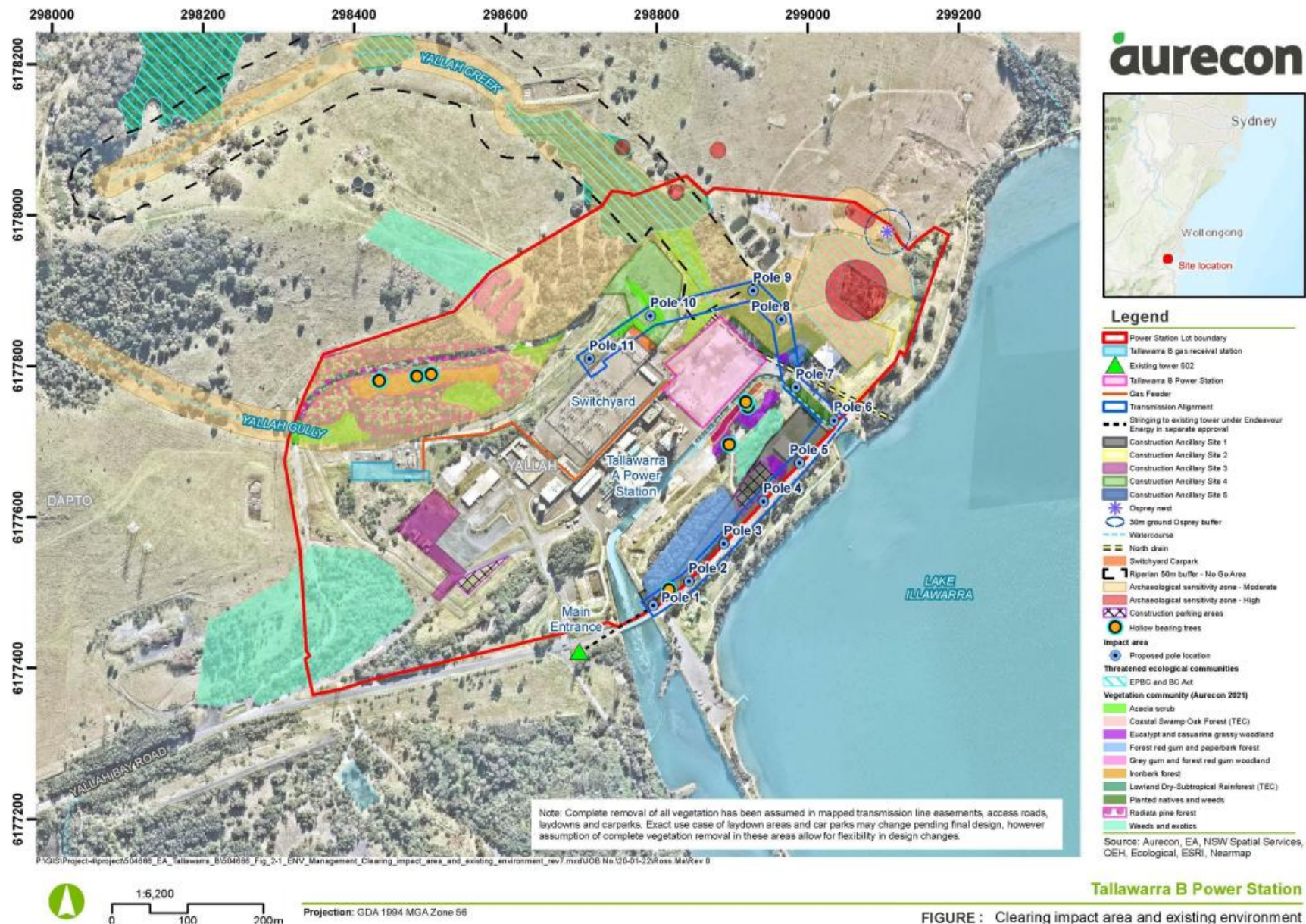


Figure 2-2: Tallawarra Power Station clearing impact and existing environment

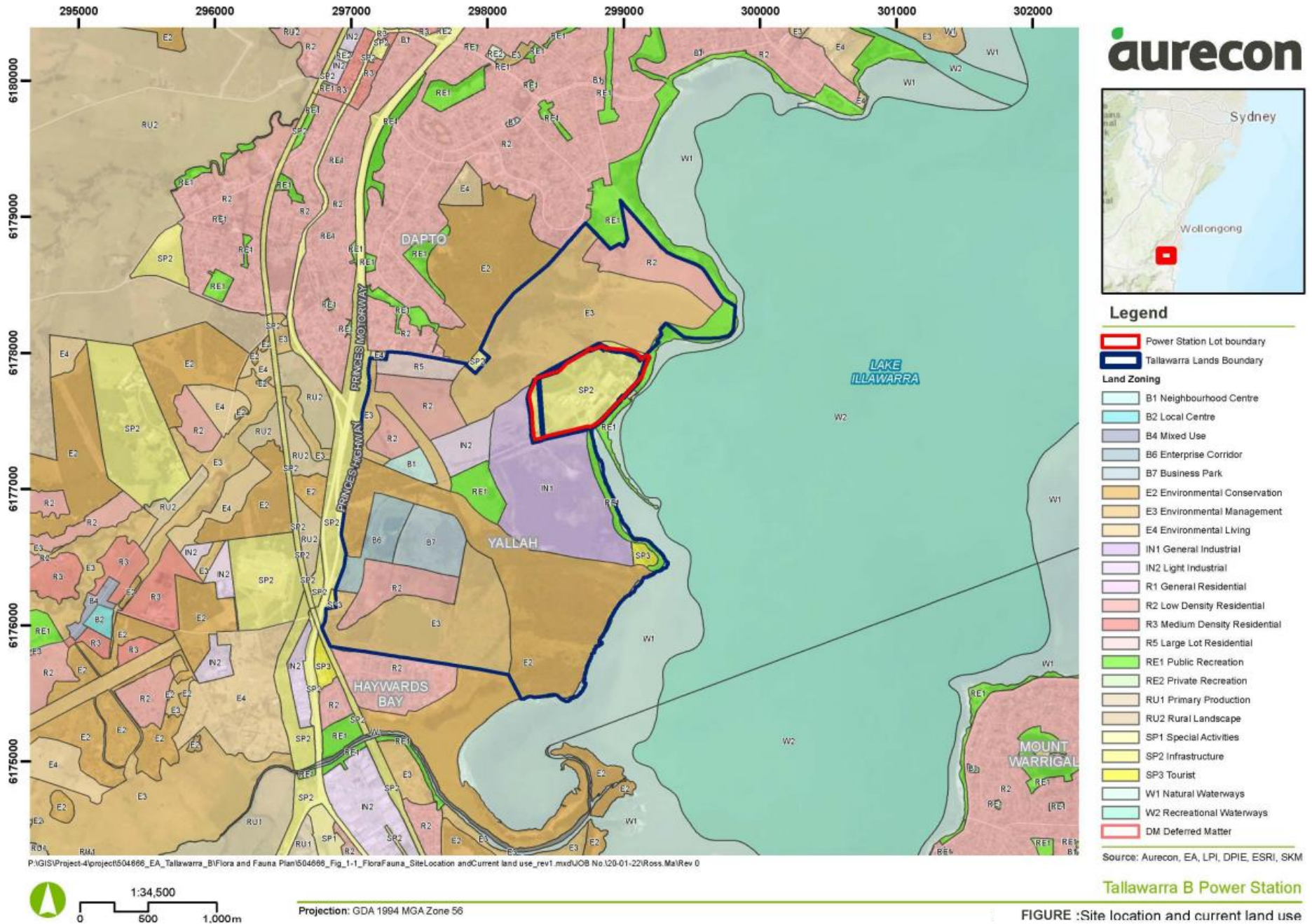


Figure 2-3: Tallawarra Power Station site location and adjacent land uses

## 2.5 Roles and responsibilities

- EnergyAustralia, as proponent, owner and operator have overarching accountability for the project operations; and
- contractors and sub-contractors may be engaged by EnergyAustralia, as required.

EnergyAustralia's Tallawarra Site Leader is ultimately responsible for ensuring that the specific roles and responsibilities as well as lines of report for the project are clearly defined and communicated to all relevant personnel.

EnergyAustralia's Environment & Safety Specialist will be responsible for overall management of the OEMP and sub-plans and the implementation and monitoring of all relevant environmental controls, commitments and due-diligence requirements associated with this OEMP. The Environment & Safety Specialist directly reports to the Site Leader.

The Environment & Safety Specialist is also responsible for induction, briefing and advising of all staff and contractors of their obligations and requirements.

Table 1 provides further detail on the roles and responsibilities for key personnel with environmental management/compliance accountabilities during project operations.

**Table 1: Roles and environmental/compliance responsibilities**

Role	Responsibilities
Site Leader	<p>The environmental responsibilities for the Site Leader include:</p> <ul style="list-style-type: none"> <li>■ ensure employees and contractors are provided with, and understand the known hazards associated with work, safety and the environmental requirements and the scope of work;</li> <li>■ ensure there is compliance with statutory requirements, EPA Licence and conditions of planning approval;</li> <li>■ ensure employees are completing all relevant environmental training as per the training matrix;</li> <li>■ oversees environmental and operational activities and provides direction;</li> <li>■ ensuring environmental risk management is incorporated into work processes;</li> <li>■ ensure adequate resources are assigned to the site;</li> <li>■ overall site responsibility for Health, Safety, Security and Environmental Compliance;</li> <li>■ day to day management of the site;</li> <li>■ ensures that environmental incidents requiring investigation are followed up and measures are effective; and</li> <li>■ liaison with EnergyAustralia and government authorities as required.</li> </ul>
Environment & Safety Specialist	<p>The environmental responsibilities of the Environment &amp; Safety Specialist include:</p> <ul style="list-style-type: none"> <li>■ review the OEMP annually;</li> <li>■ ensure that all environmental obligations are met and prepare reports on compliance;</li> <li>■ obtain relevant environmental licences, permits and approvals;</li> <li>■ manage environmental consultants and contractors;</li> <li>■ consultation with regulatory agencies;</li> <li>■ liaise with government agencies and relevant stakeholders;</li> <li>■ supports the investigation of environmental incidents and near misses; and</li> <li>■ maintain environmental documents.</li> </ul>
All employees / subcontractors	<p>The environmental responsibility of all employees and subcontractors include:</p> <ul style="list-style-type: none"> <li>■ comply with all HSSE procedures, including adopted procedures from approved environmental management systems;</li> <li>■ conduct safe work observations;</li> <li>■ reporting all safety and environmental incidents;</li> <li>■ comply with the requirements of the EMS, the OEMP and sub-plans;</li> <li>■ prepare activity specific EWMS that comply with the EMS and OEMP;</li> <li>■ undertake activities in accordance with approved EWMS; and</li> <li>■ maintain environmental records.</li> </ul>

## 3 Previous actions

### 3.1 Actions arising from Independent Environmental Audit 5

Independent Environmental Audit 5 considered a total of 114 conditions from the Project Approval, of which there were 194 separately assessable sub-conditions (items). The Tallawarra Stage B project was found to be compliant with the approval consent requirements. Of the 194 assessable sub-conditions, during the audit a total of 58 items were not triggered, and the remaining 136 sub-conditions were determined to be compliant. No non-compliances or opportunities for improvement were identified, and consequently, no corrective or follow-up actions were deemed necessary.

### 3.2 Actions arising from previous Operation Compliance Report

The previous Operation Compliance Report assessed a total of 114 conditions from the Project Approval, comprising 194 separately assessable sub-conditions. As many construction-related conditions were previously evaluated through Independent Environmental Audits 1 to 5, 95 sub-conditions were excluded from this assessment. Accordingly, this report focuses on the remaining 99 sub-conditions relevant to the operational phase of the Tallawarra Stage B project.

Of the 99 assessable sub-conditions, during the reporting period 32 items were not triggered, and the remaining 67 sub-conditions were deemed compliant. There were no actions generated from the previous Operation Compliance Report.

Table 2 Previous actions status table

Source	Condition of Consent Number	Action Proposed	Proposed Completion Date	Status	Action Completed
Nil					

## 4 Compliance status summary

### 4.1 Non-compliance summary

This Annual Operation Compliance Report assessed 92 operational sub-conditions from the Project Approval. During the reporting period 29 items were not triggered, 62 sub-conditions were deemed compliant and 1 sub-condition was deemed non-compliant.

The single non-compliance was related to condition 4.14 *Weather Monitoring*. Condition 4.14 states “*The Proponent shall monitor the weather parameters in Table 10 on site in accordance with the specified sampling methods, units of measure, averaging periods and frequency.*” During the reporting period weather monitoring parameters were not continuously monitored due to issues with equipment. This non-compliance was reported to DPHI and the NSW EPA and no formal enforcement action was taken. In response to this, EnergyAustralia replaced the weather station with an upgraded unit that meets all relevant monitoring standards. To date there have been no issues relating to data availability or accuracy since replacement.

## 5 Incidents

### 5.1 Incident summary

No incidents were recorded during the reporting period.

## 6 Complaints

### 6.1 Complaints summary during the reporting period

No complaints were received during the reporting period and therefore no action was/is required.

Table 3 Complaints summary

Number of complaints received	Number of Complainants	Location of Complainants	Nature of Complaints
Nil			

# Appendix A – Compliance Table

Condition Number	Requirement	Evidence Used	Findings	Development Phase	Compliance Status
<b>1.ADMINISTRATIVE CONDITIONS</b>					
1.1 TERMS OF APPROVAL	The project may only be carried out: a) in compliance with the conditions of this approval granted with respect to the Tallawarra Stage B Gas Turbine Power Station Project (07_0124);	OEMP Rev 5 Project Approval 07_0124	It is considered that the project is generally being carried out in compliance with the conditions of this approval granted with respect to the Tallawarra Stage B Gas Turbine Power Station Project (07_0124), with exceptions as noted herein.	Operation	Compliant
	The project may only be carried out: b) in accordance with all written directions of the Secretary; and	OEMP Rev 5 Letter from DPHI dated 18/06/2026	OEMP (Rev 5) and associated sub-plans, available from project website and have been approved by DPHI 18/06/2026	Operation	Compliant
	The project may only be carried out: c) generally in accordance with the EA.	Tallawarra Stage B Gas Turbine Power Station Environmental Assessment (SKM 2009)	It is considered that the project is generally being carried out in accordance with the EA.	Operation	Compliant
1.2 TERMS OF APPROVAL	The conditions of this approval and directions of the Secretary prevail to the extent of any inconsistency, ambiguity or conflict between them and the documents listed in condition 1.1c). In the event of an inconsistency, ambiguity or conflict between any of the documents listed in condition 1.1c), the most recent document prevails to the extent of any inconsistency, ambiguity or conflict.	Noted.	Noted.		Compliant
1.3 TERMS OF APPROVAL	The Proponent shall comply with any reasonable requirement(s) of the Secretary arising from the Department's assessment of: a) any documents that are submitted in accordance with this approval; and	Review of correspondence with Department.	No requests post submission of previous Operation Compliance Report	Operation	Compliant
	b) the implementation of any actions or measures contained in these documents.	Review of relevant documentation.	EA is generally implementing actions or measures contained in the post approval plans, documents and DPHI requirements, as noted in this audit. No further requirements arising within the current audit period.	Operation	Compliant

Condition Number	Requirement	Evidence Used	Findings	Development Phase	Compliance Status
1.5 LIMITS OF APPROVAL	The project shall comprise a single-unit gas turbine power plant with a total nominal output of up to 400 megawatts operating in open cycle mode or a single unit gas turbine plant with a nominal output of 400 megawatts operating in combined cycle mode.	Review of previous Operation Compliance Report.	EA has no updates/changes	Operation	Compliant
1.6 LIMITS OF APPROVAL	Nothing in this approval permits the construction and operation of an open cycle gas turbine plant, unless the Proponent has submitted a report to the Secretary which demonstrates that operation of an open cycle gas turbine plant will not have an adverse impact on aviation safety. This report must be prepared in consultation with Shellharbour City Council, and its conclusions and recommendations must have been agreed to by the CASA prior to submission to the Secretary. The report must be approved by the Secretary before commencement of construction of an open cycle plant.	Letter from DPHI dated 11/11/2025 approving revision E of the Plume Validation Monitoring Program (PVMP)	DPHI letter dated 11/11/2025 advising that after review of the PVMP the Planning Secretary considers it to meet the requirements of the project approval.	Operation	Compliant
1.7 STATUTORY REQUIREMENTS	The Proponent shall ensure that all licences, permits and approvals are obtained and maintained as required throughout the life of the project. No condition of this approval removes the obligation for the Proponent to obtain, renew or comply with such licences, permits or approvals. The Proponent shall ensure that a copy of this approval and all relevant environmental approvals are available on the site at all times during the life of the project.	EPL 555 variation dated 15/04/2025 Tallawarra Stage B Gas Turbine Power Station Project Approval (07_0124)	EPA licence variation retains the relevant conditions of EA's existing EPL to include the full capacity of the Tallawarra station and includes the conditions that are relevant from the project approval.	Operation	Compliant
1.8 STATUTORY REQUIREMENTS	For the purpose of section 198(3)(b) of the Environmental Planning and Assessment Regulation 2000 (the Regulation), the relevant provisions, as defined in section 198(1) of the Regulation, apply to this approval.	Noted.	Noted.		Compliant

Condition Number	Requirement	Evidence Used	Findings	Development Phase	Compliance Status																																																										
<b>2. OPERATING CONDITIONS</b>																																																															
2.1 APPROVED FUELS	Natural gas is the only fuel approved for firing of the burner/turbine.	Internal EA email from Amanda Jones (EA Planning & Approvals) Project approval 07_0124 reviewed.	Not applicable, only using natural gas Note H2 MOD3 has been approved.		Compliant																																																										
<b>3.SPECIFIC ENVIRONMENTAL CONDITIONS</b>																																																															
3.5 OPERATIONAL NOISE	<p>If noise from an activity is substantially tonal, intermittent or impulsive in nature and contains major components within the low frequency range (as described in Noise Policy for Industry (NSW EPA, 2017)), 5 dB(A) must be added to the measured noise level when comparing the measured noise with the limits specified in Tables 1 and 2, in accordance with the requirements of the Noise Policy for Industry (NSW EPA, 2017).</p> <p>The noise limits set out in Table 1 and Table 2 do not apply under: wind speeds greater than 3 m/s (measured at 10 metres above ground level); or under stability category G temperature inversion conditions; or under stability category F temperature inversion conditions and wind speeds greater than 2 metres per second at 10 metres above the ground.</p> <p>Stability category temperature inversion conditions are to be determined by the sigma-theta method referred to in the Noise Policy for Industry (NSW EPA, 2017).</p> <p>The data to be used for determining meteorological conditions is that recorded by the meteorological weather station located at the Tallawarra Stage A power station.</p>																																																														
	<p><b>Table 1 – Maximum Allowable Noise Limits Outside the Tallawarra Lands</b></p> <table border="1"> <thead> <tr> <th rowspan="2">Location</th> <th>Day 7:00 am to 6:00 pm Excludes Sundays and public holidays</th> <th>Evening 6:00 pm to 10:00 pm any day</th> <th colspan="2">Night 10:00 pm to 7:00 am Excludes Sundays and public holidays</th> </tr> <tr> <th>Leq1h (revised)</th> <th>Leq1h (revised)</th> <th>Leq1h (revised)</th> <th>Lmax</th> </tr> </thead> <tbody> <tr> <td>Locality T2 Any residence on Carlyn Close, Wells Place, Corner Place, and Crested Street, T2, Eskdaleville</td> <td>35 dB(A)</td> <td>35 dB(A)</td> <td>35 dB(A)</td> <td>45 dB(A)</td> </tr> <tr> <td>Locality T4 Any residence on Spadina View and Malaga Place in Eskdaleville</td> <td>35 dB(A)</td> <td>35 dB(A)</td> <td>35 dB(A)</td> <td>45 dB(A)</td> </tr> <tr> <td>Locality M40 Any residence on The Bouzouaki Park Circuit, Hillyard Road and Honey Creek in Cole Flat</td> <td>38 dB(A)</td> <td>38 dB(A)</td> <td>38 dB(A)</td> <td>45 dB(A)</td> </tr> <tr> <td>Locality M41 Any residence on Redtail Parade and Patricia Parade in Mt Suggan</td> <td>38 dB(A)</td> <td>38 dB(A)</td> <td>38 dB(A)</td> <td>45 dB(A)</td> </tr> <tr> <td>Locality M42 Any residence in Playwarta Bay</td> <td>35 dB(A)</td> <td>35 dB(A)</td> <td>35 dB(A)</td> <td>45 dB(A)</td> </tr> </tbody> </table> <p><b>Table 2 – Noise Limits for Tallawarra Lands Residential Areas</b></p> <table border="1"> <thead> <tr> <th rowspan="2">Location</th> <th>Day 7:00 am to 6:00 pm Excludes Sundays and public holidays</th> <th>Evening 6:00 pm to 10:00 pm any day</th> <th colspan="2">Night 10:00 pm to 7:00 am Excludes Sundays and public holidays</th> </tr> <tr> <th>Leq1h (revised)</th> <th>Leq1h (revised)</th> <th>Leq1h (revised)</th> <th>Lmax</th> </tr> </thead> <tbody> <tr> <td>Most affected residence – processed eastern residential area</td> <td>If the Noise Policy for Industry (NSW EPA, 2017) Modification Factors for Low Frequency Noise apply – 40 dB(A), otherwise 38 dB(A)</td> <td>If the Noise Policy for Industry (NSW EPA, 2017) Modification Factors for Low Frequency Noise apply – 40 dB(A), otherwise 38 dB(A)</td> <td>If the Noise Policy for Industry (NSW EPA, 2017) Modification Factors for Low Frequency Noise apply – 40 dB(A), otherwise 38 dB(A)</td> <td>50 dB(A)</td> </tr> <tr> <td>Most affected residence – processed central residential area</td> <td>40 dB(A)</td> <td>40 dB(A)</td> <td>40 dB(A)</td> <td>50 dB(A)</td> </tr> <tr> <td>Most affected residence – processed south-western residential area</td> <td>41 dB(A)</td> <td>41 dB(A)</td> <td>41 dB(A)</td> <td>51 dB(A)</td> </tr> </tbody> </table>	Location	Day 7:00 am to 6:00 pm Excludes Sundays and public holidays	Evening 6:00 pm to 10:00 pm any day	Night 10:00 pm to 7:00 am Excludes Sundays and public holidays		Leq1h (revised)	Leq1h (revised)	Leq1h (revised)	Lmax	Locality T2 Any residence on Carlyn Close, Wells Place, Corner Place, and Crested Street, T2, Eskdaleville	35 dB(A)	35 dB(A)	35 dB(A)	45 dB(A)	Locality T4 Any residence on Spadina View and Malaga Place in Eskdaleville	35 dB(A)	35 dB(A)	35 dB(A)	45 dB(A)	Locality M40 Any residence on The Bouzouaki Park Circuit, Hillyard Road and Honey Creek in Cole Flat	38 dB(A)	38 dB(A)	38 dB(A)	45 dB(A)	Locality M41 Any residence on Redtail Parade and Patricia Parade in Mt Suggan	38 dB(A)	38 dB(A)	38 dB(A)	45 dB(A)	Locality M42 Any residence in Playwarta Bay	35 dB(A)	35 dB(A)	35 dB(A)	45 dB(A)	Location	Day 7:00 am to 6:00 pm Excludes Sundays and public holidays	Evening 6:00 pm to 10:00 pm any day	Night 10:00 pm to 7:00 am Excludes Sundays and public holidays		Leq1h (revised)	Leq1h (revised)	Leq1h (revised)	Lmax	Most affected residence – processed eastern residential area	If the Noise Policy for Industry (NSW EPA, 2017) Modification Factors for Low Frequency Noise apply – 40 dB(A), otherwise 38 dB(A)	If the Noise Policy for Industry (NSW EPA, 2017) Modification Factors for Low Frequency Noise apply – 40 dB(A), otherwise 38 dB(A)	If the Noise Policy for Industry (NSW EPA, 2017) Modification Factors for Low Frequency Noise apply – 40 dB(A), otherwise 38 dB(A)	50 dB(A)	Most affected residence – processed central residential area	40 dB(A)	40 dB(A)	40 dB(A)	50 dB(A)	Most affected residence – processed south-western residential area	41 dB(A)	41 dB(A)	41 dB(A)	51 dB(A)	<p>Integrum complaints register. Operational Noise Management Plan.</p>	<p>No noise related complaints received during the reporting period.</p>	<p>Operation</p>	<p>Compliant</p>
Location	Day 7:00 am to 6:00 pm Excludes Sundays and public holidays		Evening 6:00 pm to 10:00 pm any day	Night 10:00 pm to 7:00 am Excludes Sundays and public holidays																																																											
	Leq1h (revised)	Leq1h (revised)	Leq1h (revised)	Lmax																																																											
Locality T2 Any residence on Carlyn Close, Wells Place, Corner Place, and Crested Street, T2, Eskdaleville	35 dB(A)	35 dB(A)	35 dB(A)	45 dB(A)																																																											
Locality T4 Any residence on Spadina View and Malaga Place in Eskdaleville	35 dB(A)	35 dB(A)	35 dB(A)	45 dB(A)																																																											
Locality M40 Any residence on The Bouzouaki Park Circuit, Hillyard Road and Honey Creek in Cole Flat	38 dB(A)	38 dB(A)	38 dB(A)	45 dB(A)																																																											
Locality M41 Any residence on Redtail Parade and Patricia Parade in Mt Suggan	38 dB(A)	38 dB(A)	38 dB(A)	45 dB(A)																																																											
Locality M42 Any residence in Playwarta Bay	35 dB(A)	35 dB(A)	35 dB(A)	45 dB(A)																																																											
Location	Day 7:00 am to 6:00 pm Excludes Sundays and public holidays	Evening 6:00 pm to 10:00 pm any day	Night 10:00 pm to 7:00 am Excludes Sundays and public holidays																																																												
	Leq1h (revised)	Leq1h (revised)	Leq1h (revised)	Lmax																																																											
Most affected residence – processed eastern residential area	If the Noise Policy for Industry (NSW EPA, 2017) Modification Factors for Low Frequency Noise apply – 40 dB(A), otherwise 38 dB(A)	If the Noise Policy for Industry (NSW EPA, 2017) Modification Factors for Low Frequency Noise apply – 40 dB(A), otherwise 38 dB(A)	If the Noise Policy for Industry (NSW EPA, 2017) Modification Factors for Low Frequency Noise apply – 40 dB(A), otherwise 38 dB(A)	50 dB(A)																																																											
Most affected residence – processed central residential area	40 dB(A)	40 dB(A)	40 dB(A)	50 dB(A)																																																											
Most affected residence – processed south-western residential area	41 dB(A)	41 dB(A)	41 dB(A)	51 dB(A)																																																											

Condition Number	Requirement	Evidence Used	Findings	Development Phase	Compliance Status																															
3.6 OPERATIONAL NOISE	Where operational noise monitoring (as required by either conditions 4.1 or 4.5 of this approval) identifies any non-compliance with the operational noise limits specified under condition 3.5 of this approval, the Proponent shall prepare and submit to the Secretary for approval a report including, but not limited to: a) an assessment of all reasonable and feasible physical and other mitigation measures for reducing noise at the source;				Not Triggered																															
	b) Identification of the preferred measure(s) for reducing noise at the source;				Not Triggered																															
	c) evidence that the EPA is satisfied that the proposed noise mitigation measures are acceptable; and				Not Triggered																															
	d) location, type, timing and responsibility for implementation of the noise mitigation measure(s). The report is to be submitted to the Secretary within 90 days of undertaking the noise monitoring which has identified exceedances of the operational noise criteria specified under condition 3.5, unless otherwise agreed to by the Secretary. The Proponent shall implement all reasonable and feasible mitigation measures in accordance with the requirements of the Secretary.				Not Triggered																															
3.7 ADDITIONAL NOISE MITIGATION MEASURES	<p>If, after the implementation of all reasonable and feasible source controls, as identified in the report required by condition 3.6, the noise generated by the combined operation of the Tallawarra Stage A and Tallawarra Stage B power stations exceeds the noise limits stipulated in Table 3 and Table 4 at the specified localities, upon receiving a written request from an affected landowner (unless that landowner has acquisition rights under condition 3.13 of this approval and has requested acquisition) the Proponent shall investigate and implement reasonable and feasible at-receiver noise mitigation measures such as double glazing, insulation, air conditioning and/or other building acoustic treatments at any residence on the land, in consultation with the landowner, to ensure that the noise limits specified in condition 3.5 of this approval are not exceeded. If noise from an activity is substantially tonal, intermittent or impulsive in nature and contains major components within the low frequency range (as described in Noise Policy for Industry (NSW EPA, 2017)), 5 dB(A) must be added to the measured noise level when comparing the measured noise with the limits specified in Tables 3 and 4, in accordance with the requirements of the Noise Policy for Industry (NSW EPA, 2017).</p> <p><b>Table 3 – Additional Noise Mitigation Criteria Outside the Tallawarra Lands</b></p> <table border="1"> <thead> <tr> <th rowspan="2">Location</th> <th>Day</th> <th>Evening</th> <th>Night</th> </tr> <tr> <th>7:00 am to 6:00 pm weekdays to 6:00 pm on Saturdays and public holidays</th> <th>6:00 pm to 10:00 pm on weekdays</th> <th>10:00 pm to 7:00 am weekdays to 6:00 pm on Saturdays and public holidays</th> </tr> <tr> <th></th> <th>L<sub>max</sub>75 metric</th> <th>L<sub>max</sub>75 metric</th> <th>L<sub>max</sub>75 metric</th> </tr> </thead> <tbody> <tr> <td>Locality Y2 Any residence on Curlew Close, Waddy Place, Cornhill Place, and Chalmers Street, Kooragang Island</td> <td>40 dB(A)</td> <td>40 dB(A)</td> <td>40 dB(A)</td> </tr> <tr> <td>Locality Y4 Any residence on Wundahra Way and Wundahra Street, Kooragang Island</td> <td>41 dB(A)</td> <td>41 dB(A)</td> <td>41 dB(A)</td> </tr> <tr> <td>Locality M1 Any residence on The Quadrant, PMA Crescent, Harvey Road and Batters Close, on the Port</td> <td>41 dB(A)</td> <td>41 dB(A)</td> <td>41 dB(A)</td> </tr> <tr> <td>Locality M2 Any residence on Scudall Parade and Innesdale Parade in St. Wandell</td> <td>40 dB(A)</td> <td>40 dB(A)</td> <td>40 dB(A)</td> </tr> <tr> <td>Locality M4 Any residence in Haywards Bay</td> <td>47 dB(A)</td> <td>47 dB(A)</td> <td>47 dB(A)</td> </tr> </tbody> </table>	Location	Day	Evening	Night	7:00 am to 6:00 pm weekdays to 6:00 pm on Saturdays and public holidays	6:00 pm to 10:00 pm on weekdays	10:00 pm to 7:00 am weekdays to 6:00 pm on Saturdays and public holidays		L <sub>max</sub> 75 metric	L <sub>max</sub> 75 metric	L <sub>max</sub> 75 metric	Locality Y2 Any residence on Curlew Close, Waddy Place, Cornhill Place, and Chalmers Street, Kooragang Island	40 dB(A)	40 dB(A)	40 dB(A)	Locality Y4 Any residence on Wundahra Way and Wundahra Street, Kooragang Island	41 dB(A)	41 dB(A)	41 dB(A)	Locality M1 Any residence on The Quadrant, PMA Crescent, Harvey Road and Batters Close, on the Port	41 dB(A)	41 dB(A)	41 dB(A)	Locality M2 Any residence on Scudall Parade and Innesdale Parade in St. Wandell	40 dB(A)	40 dB(A)	40 dB(A)	Locality M4 Any residence in Haywards Bay	47 dB(A)	47 dB(A)	47 dB(A)				Not Triggered
Location	Day		Evening	Night																																
	7:00 am to 6:00 pm weekdays to 6:00 pm on Saturdays and public holidays	6:00 pm to 10:00 pm on weekdays	10:00 pm to 7:00 am weekdays to 6:00 pm on Saturdays and public holidays																																	
	L <sub>max</sub> 75 metric	L <sub>max</sub> 75 metric	L <sub>max</sub> 75 metric																																	
Locality Y2 Any residence on Curlew Close, Waddy Place, Cornhill Place, and Chalmers Street, Kooragang Island	40 dB(A)	40 dB(A)	40 dB(A)																																	
Locality Y4 Any residence on Wundahra Way and Wundahra Street, Kooragang Island	41 dB(A)	41 dB(A)	41 dB(A)																																	
Locality M1 Any residence on The Quadrant, PMA Crescent, Harvey Road and Batters Close, on the Port	41 dB(A)	41 dB(A)	41 dB(A)																																	
Locality M2 Any residence on Scudall Parade and Innesdale Parade in St. Wandell	40 dB(A)	40 dB(A)	40 dB(A)																																	
Locality M4 Any residence in Haywards Bay	47 dB(A)	47 dB(A)	47 dB(A)																																	

Condition Number	Requirement	Evidence Used	Findings	Development Phase	Compliance Status																							
	<p><b>Table 4 - Additional Noise Mitigation Criteria for Tallawarra Lands Residential Areas</b></p> <table border="1"> <thead> <tr> <th rowspan="2">Location</th> <th>Day</th> <th>Evening</th> <th>Night</th> </tr> <tr> <th>140 and 0.02m barbed wire fences or 1000 and 0.02m gabion fences and paths 1000m</th> <th>0.02m or 1000 and 0.02m barbed wire fences</th> <th>1000 and 0.02m barbed wire fences or 1000 and 0.02m gabion fences and paths 1000m</th> </tr> <tr> <th></th> <th>Leq(1h) (max)</th> <th>Leq(1h) (max)</th> <th>Leq(1h) (max)</th> </tr> </thead> <tbody> <tr> <td>Non-affected residences - proposed northern residential area</td> <td>43 dB(A)</td> <td>43 dB(A)</td> <td>43 dB(A)</td> </tr> <tr> <td>Non-affected residences - proposed central residential area</td> <td>43 dB(A)</td> <td>43 dB(A)</td> <td>43 dB(A)</td> </tr> <tr> <td>Non-affected residences - proposed south-western residential area</td> <td>44 dB(A)</td> <td>44 dB(A)</td> <td>44 dB(A)</td> </tr> </tbody> </table>	Location	Day	Evening	Night	140 and 0.02m barbed wire fences or 1000 and 0.02m gabion fences and paths 1000m	0.02m or 1000 and 0.02m barbed wire fences	1000 and 0.02m barbed wire fences or 1000 and 0.02m gabion fences and paths 1000m		Leq(1h) (max)	Leq(1h) (max)	Leq(1h) (max)	Non-affected residences - proposed northern residential area	43 dB(A)	43 dB(A)	43 dB(A)	Non-affected residences - proposed central residential area	43 dB(A)	43 dB(A)	43 dB(A)	Non-affected residences - proposed south-western residential area	44 dB(A)	44 dB(A)	44 dB(A)				
Location	Day		Evening	Night																								
	140 and 0.02m barbed wire fences or 1000 and 0.02m gabion fences and paths 1000m	0.02m or 1000 and 0.02m barbed wire fences	1000 and 0.02m barbed wire fences or 1000 and 0.02m gabion fences and paths 1000m																									
	Leq(1h) (max)	Leq(1h) (max)	Leq(1h) (max)																									
Non-affected residences - proposed northern residential area	43 dB(A)	43 dB(A)	43 dB(A)																									
Non-affected residences - proposed central residential area	43 dB(A)	43 dB(A)	43 dB(A)																									
Non-affected residences - proposed south-western residential area	44 dB(A)	44 dB(A)	44 dB(A)																									
3.8 ADDITIONAL NOISE MITIGATION MEASURES	The Proponent shall bear the costs of any additional at-receiver mitigation measures implemented at an affected property or land.				Not Triggered																							
3.9 ADDITIONAL NOISE MITIGATION MEASURES	The Proponent shall make a binding written offer to the landowner regarding the mitigation options that can be implemented at the property. If within three months of receiving this request from the landowner the Proponent and landowner cannot agree on the measures to be implemented, or there is a dispute about the implementation of these measures, then either party may refer the matter to the Secretary for resolution, whose decision shall be final. If the landowner refuses to accept the Proponent's offer within six months of the date of offer, the Proponent's obligations to provide additional mitigation measures at the property or land shall cease, unless otherwise agreed by the Secretary.				Not Triggered																							
3.10 ADDITIONAL NOISE MITIGATION MEASURES	If a landowner has agreed to, or a property has been the subject of the application of, at-source noise mitigation measures under condition 3.7, the Proponent's obligations to re-consider the land or property under the requirements of condition 3.7 shall cease, unless otherwise agreed by the Secretary.				Not Triggered																							
3.11 ADDITIONAL NOISE MITIGATION MEASURES	The requirements of conditions 3.7 to 3.10 do not apply if a negotiated agreement consistent with the requirements of Noise Policy for Industry (NSW EPA, 2017) exists between the Proponent and the landowner.				Not Triggered																							
3.12 ADDITIONAL NOISE MITIGATION MEASURES	The Proponent shall provide written notice to all landowners that are entitled to rights under condition 3.7 within 21 days of determining the landholdings to which these rights apply. This condition only applies where operational noise levels have been confirmed. For the purpose of this condition and condition 3.18, confirmation of operational noise levels means: a) completion of the operational noise review required under condition 4.1 of this approval; and				Not Triggered																							
	The Proponent shall provide written notice to all landowners that are entitled to rights under condition 3.7 within 21 days of determining the landholdings to which these rights apply. This condition only applies where operational noise levels have been confirmed. For the purpose of this condition and condition 3.18, confirmation of operational noise levels means: b) implementation of any source controls, as required under condition 3.6 of this approval, should the operational noise review indicate noise levels in excess of the operational noise limits specified in condition 3.5; and				Not Triggered																							

Condition Number	Requirement	Evidence Used	Findings	Development Phase	Compliance Status																																																						
	<p>The Proponent shall provide written notice to all landowners that are entitled to rights under condition 3.7 within 21 days of determining the landholdings to which these rights apply. This condition only applies where operational noise levels have been confirmed. For the purpose of this condition and condition 3.18, confirmation of operational noise levels means: c) monitoring of operational noise levels, as per the requirements under condition 4.5 of this approval, following the implementation of any source controls.</p>				Not Triggered																																																						
<p>3.13 LAND ACQUISITION CRITERIA</p>	<p>If, after the implementation of all reasonable and feasible source controls, as identified in the report required by condition 3.6, the noise generated by the combined operation of the Tallawarra Stage A and Tallawarra Stage B power stations exceeds the noise limits specified in Table 5 and Table 6 at the specified localities, the Proponent shall, upon receiving a written request for acquisition from the landowner, within two years of the date of that landowner being notified of his/her acquisition rights, acquire the land in accordance with the procedures in conditions 3.14 to 3.16 of this approval. Any landowner that has agreed to, or property that has been the subject of, the application of additional noise mitigation measures under condition 3.7 of this approval waives the right to land acquisition. If noise from an activity is substantially tonal, intermittent or impulsive in nature and contains major components within the low frequency range (as described in Noise Policy for Industry (NSW EPA, 2017)), 5 dB(A) must be added to the measured noise level when comparing the measured noise with the limits specified in Tables 5 and 6, in accordance with the requirements of the Noise Policy for Industry (NSW EPA, 2017).</p> <p><b>Table 5 - Land Acquisition Criteria for Residential Receivers Outside the Tallawarra Lands</b></p> <table border="1" data-bbox="309 895 678 1050"> <thead> <tr> <th rowspan="2">Location</th> <th>Day</th> <th>Eveing</th> <th>Night</th> </tr> <tr> <th>7:00 am to 6:00 pm Monday to Friday (100 per cent of day time noise) (100 per cent of day time noise)</th> <th>6:00 pm to 10:00 pm on any day (100 per cent of day time noise)</th> <th>10:00 pm to 6:00 am on any day (100 per cent of day time noise)</th> </tr> <tr> <td></td> <th>Limit(A) noise</th> <th>Limit(A) noise</th> <th>Limit(A) noise</th> </tr> </thead> <tbody> <tr> <td>Locality 10 Any residence on Gully Creek Mullumbidgee, Gully Creek, and Corryong Street, Mullumbidgee</td> <td>43 dB(A)</td> <td>43 dB(A)</td> <td>43 dB(A)</td> </tr> <tr> <td>Locality 11 Any residence on Myndra Way and Mullumbidgee Street, Mullumbidgee</td> <td>44 dB(A)</td> <td>44 dB(A)</td> <td>44 dB(A)</td> </tr> <tr> <td>Locality 12 Any residence on The Square, The Square, The Square, The Square and The Square, The Square, The Square</td> <td>44 dB(A)</td> <td>44 dB(A)</td> <td>44 dB(A)</td> </tr> <tr> <td>Locality 13 Any residence on The Square, The Square, The Square, The Square and The Square, The Square, The Square</td> <td>43 dB(A)</td> <td>43 dB(A)</td> <td>43 dB(A)</td> </tr> <tr> <td>Locality 14 Any residence in Hargreaves St</td> <td>50 dB(A)</td> <td>50 dB(A)</td> <td>50 dB(A)</td> </tr> </tbody> </table> <p><b>Table 6 - Land Acquisition Criteria for Tallawarra Lands Residential Areas</b></p> <table border="1" data-bbox="309 1098 678 1203"> <thead> <tr> <th rowspan="2">Location</th> <th>Day</th> <th>Eveing</th> <th>Night</th> </tr> <tr> <th>7:00 am to 6:00 pm Monday to Friday (100 per cent of day time noise) (100 per cent of day time noise)</th> <th>6:00 pm to 10:00 pm on any day (100 per cent of day time noise)</th> <th>10:00 pm to 6:00 am on any day (100 per cent of day time noise)</th> </tr> <tr> <td></td> <th>Limit(A) noise</th> <th>Limit(A) noise</th> <th>Limit(A) noise</th> </tr> </thead> <tbody> <tr> <td>Most affected residence - proposed northern residential area</td> <td>46 dB(A)</td> <td>46 dB(A)</td> <td>46 dB(A)</td> </tr> <tr> <td>Most affected residence - proposed central residential area</td> <td>46 dB(A)</td> <td>46 dB(A)</td> <td>46 dB(A)</td> </tr> <tr> <td>Most affected residence - proposed south residential area</td> <td>47 dB(A)</td> <td>47 dB(A)</td> <td>47 dB(A)</td> </tr> </tbody> </table>	Location	Day	Eveing	Night	7:00 am to 6:00 pm Monday to Friday (100 per cent of day time noise) (100 per cent of day time noise)	6:00 pm to 10:00 pm on any day (100 per cent of day time noise)	10:00 pm to 6:00 am on any day (100 per cent of day time noise)		Limit(A) noise	Limit(A) noise	Limit(A) noise	Locality 10 Any residence on Gully Creek Mullumbidgee, Gully Creek, and Corryong Street, Mullumbidgee	43 dB(A)	43 dB(A)	43 dB(A)	Locality 11 Any residence on Myndra Way and Mullumbidgee Street, Mullumbidgee	44 dB(A)	44 dB(A)	44 dB(A)	Locality 12 Any residence on The Square, The Square, The Square, The Square and The Square, The Square, The Square	44 dB(A)	44 dB(A)	44 dB(A)	Locality 13 Any residence on The Square, The Square, The Square, The Square and The Square, The Square, The Square	43 dB(A)	43 dB(A)	43 dB(A)	Locality 14 Any residence in Hargreaves St	50 dB(A)	50 dB(A)	50 dB(A)	Location	Day	Eveing	Night	7:00 am to 6:00 pm Monday to Friday (100 per cent of day time noise) (100 per cent of day time noise)	6:00 pm to 10:00 pm on any day (100 per cent of day time noise)	10:00 pm to 6:00 am on any day (100 per cent of day time noise)		Limit(A) noise	Limit(A) noise	Limit(A) noise	Most affected residence - proposed northern residential area	46 dB(A)	46 dB(A)	46 dB(A)	Most affected residence - proposed central residential area	46 dB(A)	46 dB(A)	46 dB(A)	Most affected residence - proposed south residential area	47 dB(A)	47 dB(A)	47 dB(A)				Not Triggered
Location	Day		Eveing	Night																																																							
	7:00 am to 6:00 pm Monday to Friday (100 per cent of day time noise) (100 per cent of day time noise)	6:00 pm to 10:00 pm on any day (100 per cent of day time noise)	10:00 pm to 6:00 am on any day (100 per cent of day time noise)																																																								
	Limit(A) noise	Limit(A) noise	Limit(A) noise																																																								
Locality 10 Any residence on Gully Creek Mullumbidgee, Gully Creek, and Corryong Street, Mullumbidgee	43 dB(A)	43 dB(A)	43 dB(A)																																																								
Locality 11 Any residence on Myndra Way and Mullumbidgee Street, Mullumbidgee	44 dB(A)	44 dB(A)	44 dB(A)																																																								
Locality 12 Any residence on The Square, The Square, The Square, The Square and The Square, The Square, The Square	44 dB(A)	44 dB(A)	44 dB(A)																																																								
Locality 13 Any residence on The Square, The Square, The Square, The Square and The Square, The Square, The Square	43 dB(A)	43 dB(A)	43 dB(A)																																																								
Locality 14 Any residence in Hargreaves St	50 dB(A)	50 dB(A)	50 dB(A)																																																								
Location	Day	Eveing	Night																																																								
	7:00 am to 6:00 pm Monday to Friday (100 per cent of day time noise) (100 per cent of day time noise)	6:00 pm to 10:00 pm on any day (100 per cent of day time noise)	10:00 pm to 6:00 am on any day (100 per cent of day time noise)																																																								
	Limit(A) noise	Limit(A) noise	Limit(A) noise																																																								
Most affected residence - proposed northern residential area	46 dB(A)	46 dB(A)	46 dB(A)																																																								
Most affected residence - proposed central residential area	46 dB(A)	46 dB(A)	46 dB(A)																																																								
Most affected residence - proposed south residential area	47 dB(A)	47 dB(A)	47 dB(A)																																																								

Condition Number	Requirement	Evidence Used	Findings	Development Phase	Compliance Status
3.14 LAND ACQUISITION CRITERIA	<p>Within three months of receiving a written request from a landowner with acquisition rights under condition 3.13 of this approval, the Proponent shall make a binding written offer to the landowner based on: (a) the current market value of the landowner's interest in the property at the date of this written request, as if the property was unaffected by the project which is the subject of the project application, having regard to the - i) existing and permissible use of the land, in accordance with the applicable planning instruments at the date of the written request, and ii) presence of improvements on the property and/or any approved building or structure which has been physically commenced at the date of the landowner's written request, and is due to be completed subsequent to that date; However, if at the end of this period, the Proponent and landowner cannot agree on the acquisition price of the land, and/or the terms upon which the land is to be acquired, then either party may refer the matter to the Secretary for resolution.</p> <p>Upon receiving such a request, the Secretary shall request the President of the NSW Division of the Australian Property Institute to appoint a qualified independent valuer or Fellow of the Institute, to consider submissions from both parties, and determine a fair and reasonable acquisition price for the land, and/or terms upon which the land is to be acquired.</p>				Not Triggered
	<p>Within 14 days of receiving the independent valuer's determination, the Proponent shall make a written offer to purchase the land at a price not less than the independent valuer's determination. If the landowner refuses to accept this offer within six months of the date of the Proponent's offer, the Proponent's obligations to acquire the land shall cease, unless otherwise agreed by the Secretary.</p>				Not Triggered
	<p>(b) the reasonable costs associated with -i)relocating within the Wollongong or Shellharbour local government areas, ii)obtaining legal advice and expert advice for determining the acquisition price of the land, and the terms upon which it is required; and</p>				Not Triggered
	<p>(c) reasonable compensation for any disturbance caused by the land acquisition process.</p>				Not Triggered
3.15 LAND ACQUISITION CRITERIA	<p>The Proponent shall bear the costs of any valuation or survey assessment requested by the independent valuer or the Secretary and the costs of determination referred to above.</p>				Not Triggered
3.16 LAND ACQUISITION CRITERIA	<p>If a landowner has already agreed to an offer of acquisition under the requirements of condition 3.13, or an offer of acquisition has been made under the requirements of condition 3.13 and refused by the landowner, the Proponent's obligations to re-consider the landowner's request or property under the requirements of condition 3.13 shall cease, unless otherwise agreed by the Secretary.</p>				Not Triggered
3.17 LAND ACQUISITION CRITERIA	<p>The requirements of conditions 3.13 to 3.16 do not apply if a negotiated agreement consistent with the requirements of Noise Policy for Industry (NSW EPA, 2017) exists between the Proponent and the relevant landowner.</p>				Not Triggered
3.18 LAND ACQUISITION CRITERIA	<p>The Proponent shall provide written notice to all landowners that are entitled to rights under condition 3.13 within 21 days of determining the landholdings to which land acquisition rights apply. This condition only applies where operational noise levels have been confirmed in accordance with the definition in condition 3.12.</p>				Not Triggered

Condition Number	Requirement	Evidence Used	Findings	Development Phase	Compliance Status												
3.19 DUST GENERATION	The Proponent shall construct and operate the project in a manner that minimises dust emissions from the site, including wind-blown and traffic-generated dust. All activities on the site shall be undertaken with the objective of preventing visible emissions of dust from the site. Should such visible dust emissions occur at any time, the Proponent shall identify and implement all practicable dust mitigation measures, including cessation of relevant works, as appropriate, such that emissions of visible dust cease.	Incident register - Integrum Complaints register - Integrum	No complaints or incidents recorded in report period regarding dust.	Operation	Compliant												
3.20 ODOUR	The Proponent shall not permit any offensive odour, as defined under section 129 of the Protection of the Environment Operations Act 1997, to be emitted beyond the boundary of the site.	Incident register - Integrum Complaints register - Integrum	No complaints or incidents recorded in report period regarding odour.	Operation	Compliant												
3.22 AIR DISCHARGE POINTS	For the purpose of this approval, air discharge/monitoring points are identified in Table 7.  <b>Table 7 - Identification of Air Monitoring and Air Discharge Points</b>	Noted.	Noted.		Compliant												
	<table border="1"> <thead> <tr> <th>EPA Identification Number</th> <th>Type of Monitoring Point</th> <th>Type of Discharge Point</th> <th>Description of Location</th> </tr> </thead> <tbody> <tr> <td>1</td> <td>Air emissions monitoring</td> <td>Discharge to air</td> <td>Stack Serving the Open Cycle Plant Turbine</td> </tr> <tr> <td>2</td> <td>Air emissions monitoring</td> <td>Discharge to air</td> <td>Stack Serving the Combined Cycle Plant Turbine</td> </tr> </tbody> </table>	EPA Identification Number	Type of Monitoring Point	Type of Discharge Point	Description of Location	1	Air emissions monitoring	Discharge to air	Stack Serving the Open Cycle Plant Turbine	2	Air emissions monitoring	Discharge to air	Stack Serving the Combined Cycle Plant Turbine				
EPA Identification Number	Type of Monitoring Point	Type of Discharge Point	Description of Location														
1	Air emissions monitoring	Discharge to air	Stack Serving the Open Cycle Plant Turbine														
2	Air emissions monitoring	Discharge to air	Stack Serving the Combined Cycle Plant Turbine														
3.24 DISCHARGE LIMITS	The Proponent shall design, construct, operate and maintain the project to ensure that for each turbine stack discharge/monitoring point identified in Table 7, the concentration of each pollutant listed in Table 8 is not exceeded at that point. The condition only applies to the normal operation of a turbine and, to avoid any doubt, does not apply during the start-up and shut-down period for a turbine. The condition continues to apply to other turbines if they are operational during these periods.  <b>Table 8 - Maximum Allowable Discharge Concentration Limits (Air)</b>	EPL 555 contains A2.2 - EPL 555 premises map and monitoring points. EPL 555. Monthly EPA report available on public website.	No NOx exceedances raised in reporting period.	Operation	Compliant												
	<table border="1"> <thead> <tr> <th>Pollutant</th> <th>Unit of measure</th> <th>100 percentile limits</th> <th>Reference conditions</th> <th>Averaging Period</th> </tr> </thead> <tbody> <tr> <td>Nitrogen dioxide (NO<sub>2</sub>) or nitric oxide (NO) or both, as NO<sub>x</sub> equivalent</td> <td>ppm</td> <td>25</td> <td>Dry, 273 K, 101.3 kPa, 15% O<sub>2</sub></td> <td>1-hour</td> </tr> </tbody> </table>	Pollutant	Unit of measure	100 percentile limits	Reference conditions	Averaging Period	Nitrogen dioxide (NO <sub>2</sub> ) or nitric oxide (NO) or both, as NO <sub>x</sub> equivalent	ppm	25	Dry, 273 K, 101.3 kPa, 15% O <sub>2</sub>	1-hour						
Pollutant	Unit of measure	100 percentile limits	Reference conditions	Averaging Period													
Nitrogen dioxide (NO <sub>2</sub> ) or nitric oxide (NO) or both, as NO <sub>x</sub> equivalent	ppm	25	Dry, 273 K, 101.3 kPa, 15% O <sub>2</sub>	1-hour													
3.25 MASS LIMITS	The Proponent shall design, construct, operate and maintain the project to ensure that the total cumulative load of nitrogen dioxide or nitric oxide, or both as nitrogen dioxide, from the combined discharges from the Tallawarra Stage A and Tallawarra Stage B power stations does not exceed 900 tonnes per annum. This mass limit also applies to emissions during start-up and shut-down periods.	EPL 555 Limit Condition L2.2  TWA TWB EPL555 Reporting 2025 2026.xlsm	EPL 555 Limit Condition L2.2 defines the Load Limit for 'Nitrogen Oxides (Air)' as 900,000.00 kg annually.  TWA TWB EPL555 Reporting 2025 2026.xlsm reports total NOx for July 2025 - April 2026 to be 40,034 kg. 900,000kg limit willnot be exceeded.	Operation	Compliant												
3.26 AVIATION SAFETY	The stacks associated with the project must be marked and lit in accordance with the requirements of the CASA.	IEA Audit 5 Compliance Table  Site inspection	Findings from IEA Audit 5 show that required lighting was adequately designed and installed. Confirmed that lighting is still installed and working as intended via visual inspection.	Operation	Compliant												

Condition Number	Requirement	Evidence Used	Findings	Development Phase	Compliance Status
3.29 DANGEROUS GOODS	The storage, handling, and transport of dangerous goods for the development must be carried out in accordance with the relevant Australian Standards, including and not limited to AS1940 and AS1596, and the Australian Code for the Transport of Dangerous Goods by Road and Rail.	ChemAlert - Tallawarra Dangerous Good Register OEMP Rev 5 s3.8	ChemAlert contains an up to date Danegerous Goods Register with all relevant information required.  s3.8 of the OEMP details the controls that EA have in place to comply with COA 3.29.	Operation	Compliant
3.30 WATER QUALITY AND SOIL IMPACTS	Except as may be provided by an Environment Protection Licence for the project, the Proponent shall comply with section 120 of the Protection of the Environment Operations Act 1997 which prohibits the pollution of waters.	Noted.	OEMP Table 5.3 states the appropriate management measure and responsibility.  The OEMP notes that all stormwater is to go through a sediment pond with an oil skimmer. A system is in place to isolate this water if the deluge system is activated. Wash water is collected in dedicated wash water tanks. No non-compliances against EPL regarding pollution of waters.	Operation	Compliant
3.38 FLORA AND FAUNA IMPACT	The Proponent shall ensure that there is no disturbance to the endangered ecological communities, including the Illawarra Subtropical Rainforest in the Sydney Basin Bioregion and the Swamp Oak Floodplain Forest of the NSW North Coast, Sydney Basin and South East Corner bioregions, during the construction and operation of the project.	Nil	No disturbing activities undertaken during the reporting period.	Operation	Compliant
3.43 FLORA AND FAUNA IMPACT	The Proponent shall monitor and maintain the riparian zone along Yallah Creek (referred to in condition 3.42) throughout the life of the project.	OEMP Rev 5 Appendix D: TQMS-ENV-M01-L02-A01 - Tallawarra B Vegetation Offset Plan	Section 4 of the Vegetation Offset Plan details the monitoring and maintenance requirements.	Operation	Compliant
3.44 FLORA AND FAUNA IMPACT	The Proponent shall monitor all rehabilitated areas, offset areas, and riparian zones for weed infestation. Any infestations shall be actively managed to remove or minimise their spread.	TQMS-ENV-M01-L02-A01 - Tallawarra B Vegetation Offset Plan	Sections 4 & 5 of the Vegetation Offset Plan cover the monitoring and management of rehabilitated areas	Operation	Compliant
3.53 VISUAL AMENITY IMPACTS	Where aviation hazard lighting is recommended by CASA and/or AirServices Australia, all reasonable and feasible attempts shall be made to ensure that this lighting is designed and directed so as not to create a nuisance to the surrounding environment, properties and roadway.	Complaints register	No complaints received related to aviation hazard lighting received during reporting period	Operation	Compliant

Condition Number	Requirement	Evidence Used	Findings	Development Phase	Compliance Status
3.54 ABORIGINAL HERITAGE IMPACTS	The Proponent shall take all reasonable and feasible measures to avoid the sites known as Yallah Gully 1 (National Parks and Wildlife Services Site ID 52-5-0248), Yallah Gully 2 (National Parks and Wildlife Services Site ID 52-5-0247), Yallah Gully 3 (National Parks and Wildlife Services Site ID 52-5-0246) and Yallah Site 2 (National Parks and Wildlife Services Site ID 52-5-0122) during the construction of the project, and develop site-specific mitigation measures to ensure that they are not impacted by construction or operation of the power station and any associated infrastructure. If impacts are unavoidable, mitigation measures are to be negotiated with the Aboriginal community and Heritage NSW.	Tallawarra B OEMP Rev 5	S5.10 of the OEMP contains a Heritage Management Plan and includes a map which shows the sensitive areas. S5.10.2 includes the Unexpected heritage finds procedure should any suspected Aboriginal cultural heritage item be uncovered along with a table of management measures (Table 5.24) with responsibilities assigned.	Operation	Compliant
3.55 ABORIGINAL HERITAGE IMPACTS	If during the course of construction or operation of the project the Proponent uncovers any previously unidentified Aboriginal cultural objects, all works likely to affect the object(s) shall cease in the immediate area to prevent any further impact to the find(s) and Heritage NSW informed. A suitably qualified archaeologist and Aboriginal community representatives shall be contacted to determine the significance of the find(s) and appropriate management measures. The Proponent shall register the site and management outcome in the Aboriginal Heritage Information Management System (AHIMS) in accordance with the National Parks and Wildlife Act 1974. Works are not to resume until approval in writing is received from Heritage NSW.	As above	No additional sites uncovered in the period.	Operation	Compliant
3.56 ABORIGINAL HERITAGE IMPACTS	Where ground disturbance is proposed (for example excavation or removal of vegetation) in the vicinity of Yallah Creek, prior to commencing construction, the Proponent shall undertake further archaeological surveying and assessment with the aim of identifying any Aboriginal cultural heritage values which may be impacted by the project. The Proponent shall ensure monitoring by Local Aboriginal Land Council representatives during such works.	Noted.	Noted.		Not Triggered
3.58 WASTE GENERATION AND MANAGEMENT	All waste materials removed from the site shall only be directed to a waste management facility lawfully permitted to accept the materials.	Cleanaway - EnergyAustralia NSW Waste Reports (June 2025 - May 2026) OEMP Rev 5	Monthly Cleanaway Waste Reports show that waste removed from site being directed to a waste management facility lawfully permitted to accept the materials.  OEMP s5.9 contains the Waste Management Plan. EA's Group Operations Information System (GOIS) will be used to track and report waste.	Operation	Compliant

Condition Number	Requirement	Evidence Used	Findings	Development Phase	Compliance Status
3.59 WASTE GENERATION AND MANAGEMENT	The Proponent shall, to the extent that is reasonable and feasible, maximise the treatment, reuse and/or recycling on the project site of any waste oils, excavated soils, vegetation, slurries, sludges or other solid and liquid waste materials associated with the project, to minimise the need for treatment or disposal of those materials outside the power station.	OEMP Rev 5	OEMP s5.9 Waste Management Plan outlines the waste hierarchy, ranking Reuse and Recycling 2 <sup>nd</sup> & 3 <sup>rd</sup> after Avoiding and reducing waste.	Operation	Compliant
3.60 WASTE GENERATION AND MANAGEMENT	The Proponent shall not cause, permit or allow any waste generated outside the site to be received at the site for storage, treatment, processing, reprocessing, or disposal on the site, except as expressly permitted by a licence under the Protection of the Environment Operations Act 1997, if such a licence is required in relation to that waste.	OEMP Rev 5	OEMP s5.9 contains the Waste Management Plan  No waste generated outside the site is permitted to be received on site. Goods and materials are required to be checked and signed off on receipt.	Operation	Compliant
3.61 WASTE GENERATION AND MANAGEMENT	The Proponent shall ensure that all liquid and/or non-liquid waste generated on the site is assessed and classified in accordance with Waste Classification Guidelines (EPA, 2009), or any superseding document.	Cleanaway - EnergyAustralia NSW Waste Reports (June 2025 - May 2026)  OEMP Rev 5	OEMP s5.9 contains the Waste Management Plan.  Monthly Cleanaway Waste Reports show that waste removed from site being directed to a waste management facility lawfully permitted to accept the materials in accordance with the Waste Classification Guidelines (EPA, 2009), or any superseding document.	Operation	Compliant
<b>4. ENVIRONMENTAL MONITORING AND AUDITING</b>					
4.5 ONGOING OPERATIONAL NOISE MONITORING	The Proponent shall prepare and implement an Operational Noise Monitoring Program to assess ongoing compliance against the operational noise limits set out in condition 3.5 of this approval. The noise monitoring program shall be prepared in consultation with, and to the satisfaction of, the EPA. Noise monitoring is to be consistent with the guidelines provided in the Noise Policy for Industry (NSW EPA, 2017) and must include, but not be limited to: a) noise monitoring at the locations specified in Table 1 and Table 2 of this approval, in accordance with the requirements of condition 4.3 of this approval;	OEMP Rev 5  Proposal: "26007_Proposal_Rev1" from Hansma Environmental Consulting Pty Ltd	OEMP s5.7.13 contains the details of the requirements to be met regarding Ongoing Operational Noise Monitoring.  Proposal from Hansma Environmental Consulting states the the monitoring is planned to be undertaken in June 2026 in accordance with applicable NSW EPA guidance, the NSW Noise Policy for Industry and AS 1055.1	Operation	Compliant
	b) attended noise monitoring;	As above	As above	Operation	Compliant

Condition Number	Requirement	Evidence Used	Findings	Development Phase	Compliance Status																																													
	c) monitoring of operations that have the potential to cause offensive noise including, but not limited to, safety valve operation, blowdown operation and the operation of circuit breakers during the day, evening and night time periods; and	As above	As above	Operation	Compliant																																													
	d) monitoring of the effectiveness of any noise mitigation measures implemented under condition 3.6 of this approval, against the noise limits specified in condition 3.5 of this approval.			Operation	Not Triggered																																													
4.6 ONGOING OPERATIONAL NOISE MONITORING	Ongoing noise monitoring shall be undertaken by the Proponent on an annual basis and as may be directed by the Secretary. The requirements for ongoing annual noise monitoring will be determined by the Secretary based on the results collected.	OEMP Rev 5 Proposal: "26007_Proposal_Rev1" from Hansma Environmental Consulting Pty Ltd	OEMP s5.7.13 contains the details of the requirements to be met regarding Ongoing Operational Noise Monitoring.  Proposal from Hansma Environmental Consulting states the the monitoring is planned to be undertaken in June 2026 in accordance with applicable NSW EPA guidance, the NSW Noise Policy for Industry and AS 1055.1	Operation	Compliant																																													
4.7 AIR QUALITY MONITORING	The Proponent must monitor (by sampling and obtaining results by analysis) the pollutant concentrations or parameters specified in Table 9 at each of the turbine stack monitoring/discharge points described in Table 7 during operation. Monitoring must be undertaken during maximum load, using the specified sampling method, units of measure, and sample at the frequency in Table 9, unless otherwise agreed to by the EPA.  <b>Table 9 – Periodic Pollutant/Parameter Monitoring (Air)</b> <table border="1"> <thead> <tr> <th>Pollutant/Parameter</th> <th>Units of Measure</th> <th>Frequency</th> <th>Sampling Method</th> </tr> </thead> <tbody> <tr> <td>Nitrogen dioxide (NO<sub>2</sub>) or nitric oxide (NO) or both, as NO<sub>x</sub> equivalent</td> <td>ppm</td> <td>Continuous</td> <td>CEM-2 and US EPA Procedure 1</td> </tr> <tr> <td>Methane</td> <td>%</td> <td>Continuous</td> <td>Open Endred 1 and US EPA Procedure 1</td> </tr> <tr> <td>Oxygen</td> <td>%</td> <td>Continuous</td> <td>CEM-3 and US EPA Procedure 1</td> </tr> <tr> <td>Temperature</td> <td>°C</td> <td>Continuous</td> <td>TM2 WHI US EPA Procedure 1</td> </tr> <tr> <td>Velocity</td> <td>m/s</td> <td>Continuous</td> <td>CEM-6 and US EPA Procedure 1</td> </tr> <tr> <td>Volumetric flow rate</td> <td>m<sup>3</sup>/s</td> <td>Continuous</td> <td>CEM-6 and US EPA Procedure 1</td> </tr> <tr> <td>Selection of sampling positions</td> <td>-</td> <td>-</td> <td>TM-1</td> </tr> </tbody> </table>	Pollutant/Parameter	Units of Measure	Frequency	Sampling Method	Nitrogen dioxide (NO <sub>2</sub> ) or nitric oxide (NO) or both, as NO <sub>x</sub> equivalent	ppm	Continuous	CEM-2 and US EPA Procedure 1	Methane	%	Continuous	Open Endred 1 and US EPA Procedure 1	Oxygen	%	Continuous	CEM-3 and US EPA Procedure 1	Temperature	°C	Continuous	TM2 WHI US EPA Procedure 1	Velocity	m/s	Continuous	CEM-6 and US EPA Procedure 1	Volumetric flow rate	m <sup>3</sup> /s	Continuous	CEM-6 and US EPA Procedure 1	Selection of sampling positions	-	-	TM-1	EPL 555 Tallawarra Monthly EPA Reports (June 2025 - May 2026)	Required pollutant concentrations or parameters being monitored as per NSW EPA EPL 555.	Operation	Compliant													
Pollutant/Parameter	Units of Measure	Frequency	Sampling Method																																															
Nitrogen dioxide (NO <sub>2</sub> ) or nitric oxide (NO) or both, as NO <sub>x</sub> equivalent	ppm	Continuous	CEM-2 and US EPA Procedure 1																																															
Methane	%	Continuous	Open Endred 1 and US EPA Procedure 1																																															
Oxygen	%	Continuous	CEM-3 and US EPA Procedure 1																																															
Temperature	°C	Continuous	TM2 WHI US EPA Procedure 1																																															
Velocity	m/s	Continuous	CEM-6 and US EPA Procedure 1																																															
Volumetric flow rate	m <sup>3</sup> /s	Continuous	CEM-6 and US EPA Procedure 1																																															
Selection of sampling positions	-	-	TM-1																																															
4.14 WEATHER MONITORING	The Proponent shall monitor the weather parameters in Table 10 on site in accordance with the specified sampling methods, units of measure, averaging periods and frequency.  <b>Table 10 - Weather Monitoring</b> <table border="1"> <thead> <tr> <th>Parameter</th> <th>Units of Measure</th> <th>Frequency</th> <th>Averaging Period</th> <th>Sampling Method</th> </tr> </thead> <tbody> <tr> <td>Rainfall</td> <td>mm</td> <td>Continuous</td> <td>1 hour</td> <td>AM-6</td> </tr> <tr> <td>Wind speed @ 10 metres</td> <td>m/s</td> <td>Continuous</td> <td>15 minute</td> <td>AM-2 &amp; AM-4</td> </tr> <tr> <td>Wind direction @ 10 metres</td> <td></td> <td>Continuous</td> <td>15 minute</td> <td>AM-2 &amp; AM-4</td> </tr> <tr> <td>Temperature @ 2 metres</td> <td>°C</td> <td>Continuous</td> <td>15 minute</td> <td>AM-4</td> </tr> <tr> <td>Temperature @ 10 metres</td> <td>°C</td> <td>Continuous</td> <td>15 minute</td> <td>AM-4</td> </tr> <tr> <td>Sigma theta @ 10 metres</td> <td></td> <td>Continuous</td> <td>15 minute</td> <td>AM-2 &amp; AM-4</td> </tr> <tr> <td>Solar radiation</td> <td>W/m<sup>2</sup></td> <td>Continuous</td> <td>15 minute</td> <td>AM-4</td> </tr> <tr> <td>Additional requirements - Siting - Measurement</td> <td></td> <td></td> <td></td> <td>AM-1 &amp; AM-4 AM-2 &amp; AM-4</td> </tr> </tbody> </table>	Parameter	Units of Measure	Frequency	Averaging Period	Sampling Method	Rainfall	mm	Continuous	1 hour	AM-6	Wind speed @ 10 metres	m/s	Continuous	15 minute	AM-2 & AM-4	Wind direction @ 10 metres		Continuous	15 minute	AM-2 & AM-4	Temperature @ 2 metres	°C	Continuous	15 minute	AM-4	Temperature @ 10 metres	°C	Continuous	15 minute	AM-4	Sigma theta @ 10 metres		Continuous	15 minute	AM-2 & AM-4	Solar radiation	W/m <sup>2</sup>	Continuous	15 minute	AM-4	Additional requirements - Siting - Measurement				AM-1 & AM-4 AM-2 & AM-4	Letter to DPHI dated 2/10/2025 "Tallawarra PowerStation Weather Monitoring"  Letter from DPHI dated 7/10/2025  Trelia Data MMP-EAUS-594 Dashboard	During the reporting period weather monitoring parameters were not continuously monitored due to issues with equipment.  DPHI were notified of this non-compliance by EA via letter on 2/10/2025. DPHI acknowledged this via letter on 7/10/2025.  This non-compliance has resulted in EA replacing the weather station with an upgraded unit. To date there have been no issues relating to data availability or accuracy since replacement.	Operation	Non-Compliant
Parameter	Units of Measure	Frequency	Averaging Period	Sampling Method																																														
Rainfall	mm	Continuous	1 hour	AM-6																																														
Wind speed @ 10 metres	m/s	Continuous	15 minute	AM-2 & AM-4																																														
Wind direction @ 10 metres		Continuous	15 minute	AM-2 & AM-4																																														
Temperature @ 2 metres	°C	Continuous	15 minute	AM-4																																														
Temperature @ 10 metres	°C	Continuous	15 minute	AM-4																																														
Sigma theta @ 10 metres		Continuous	15 minute	AM-2 & AM-4																																														
Solar radiation	W/m <sup>2</sup>	Continuous	15 minute	AM-4																																														
Additional requirements - Siting - Measurement				AM-1 & AM-4 AM-2 & AM-4																																														

Condition Number	Requirement	Evidence Used	Findings	Development Phase	Compliance Status
4.15 HAZARD AUDIT	Twelve months after the commencement of operation of the project, or within such period otherwise agreed by the Secretary, the Proponent shall commission an independent, qualified person or team to undertake a comprehensive Hazard Audit of the project. Further Hazard Audits shall be undertaken every three years thereafter. Hazard Audits shall be carried out in accordance with the Department's publication Hazardous Industry Planning Advisory Paper No. 5 - Hazard Audit Guidelines.	Email from DPHI to EA dated 19/06/2025 "RE: Hazard Audit - condition 4.15 of Approval 07_0124 (Tallawarra B)"  529638-TWB-Hazard Audit-[0]	Next Hazard Audit Due in 2027 as the last one was completed in 2024. DPHI granted a 3 month extension for the last Hazard Audit.		Not Triggered
<b>5. COMPLIANCE REPORTING AND AUDITING</b>					
5.1 INCIDENT NOTIFICATION, REPORTING AND RESPONSE	The Secretary must be notified in writing via the Major Projects website immediately after the Proponent becomes aware of an incident. The notification must identify the development (including the application number and the name of the development if it has one) and set out the location and nature of the incident. Subsequent notification requirements must be given, and reports submitted in accordance with the requirements set out in Appendix 1.	Incident/Non-compliance register (Integrum).	No incidents have occurred during the reporting period	Operation	Compliant
5.2 NON-COMPLIANCE NOTIFICATION	Within seven days of becoming aware of a non-compliance, the Proponent must notify the Department of the non-compliance within seven days of a non-compliance occurring. The notification must: a) be in writing and must be submitted via the Department's Major Projects Website; b) identify the development (including the development application number and name); c) set out the condition of this consent that the development is non-compliant with, why it does not comply, the reasons for the non-compliance (if known); and d) set out what actions have been, or will be, undertaken to address the non-compliance.	Incident/Non-compliance register (Integrum).  Letter to DPHI dated 2/10/2025 "Tallawarra Power Station Weather Monitoring"	During the reporting period weather monitoring parameters were not continuously monitored due to issues with equipment.  DPHI were notified of this non-compliance by EA via letter on 2/10/2025.	Operation	Compliant
5.5 COMPLIANCE REPORTING	Compliance Reports of the project must be carried out in accordance with the Compliance Reporting Requirements outlined in the Compliance Reporting Post Approval Requirements (2020).	Noted.	Noted.		Compliant
5.6 COMPLIANCE REPORTING	Compliance Reports must be submitted to the Department in accordance with the timeframes set out in the Compliance Reporting Post Approval Requirements (2020), unless otherwise agreed to by the Secretary.	Noted.	Noted.		Compliant
5.7 COMPLIANCE REPORTING	The Proponent must make each Compliance Report publicly available within 60 days of submitting it to the Secretary, unless otherwise agreed by the Secretary.	Previous Operation Compliance Report	Previous Operation Compliance Report was uploaded to the EA public website on 17/07/2025		Compliant
5.8 COMPLIANCE REPORTING	Notwithstanding the requirements of the Compliance Reporting Post Approval Requirements (2020), the Secretary may approve a request for ongoing annual operational compliance reports to be ceased, where it has been demonstrated to the Secretary's satisfaction that an operational compliance report has demonstrated operational compliance.	Noted.	Noted.		Compliant

Condition Number	Requirement	Evidence Used	Findings	Development Phase	Compliance Status
5.12 INDEPENDENT ENVIRONMENTAL AUDIT	In accordance with the specific requirements in the Independent Audit Post Approval Requirements (2020), the Proponent must: a) review and respond to each Independent Audit Report prepared under condition 5.9 of this approval where notice is given by the Secretary;	<b>Public website:</b> <a href="https://www.energyaustralia.com.au/about-us/what-we-do/generating-energy/tallawarra-power-station">https://www.energyaustralia.com.au/about-us/what-we-do/generating-energy/tallawarra-power-station</a>  IEA reports and the proponent's responses are all published in the Regulatory and Approval Documents Post-Development Consent section.	All IEA reports are fully published on the public website. All proponent responses to each of these reports are fully published on the website therefore each IEA has been reviewed and responded to.  Next IEA is due in 2027	Operation	Compliant
	b) submit the response to the Secretary; and			Operation	Not Triggered
	c) make each Independent Audit Report, and response to it, publicly available within 60 days of submission to the Secretary, unless otherwise agreed by the Secretary.	<b>Website:</b> IEA reports 1 to 5, and the proponent's responses to each are all published in the Regulatory and Approval Documents Post-Development Consent section.	Reports uploaded to the Tallawarra website  4/06/2026 Confirmed reports available at <a href="https://www.energyaustralia.com.au/about-us/what-we-do/generating-energy/tallawarra-power-station">https://www.energyaustralia.com.au/about-us/what-we-do/generating-energy/tallawarra-power-station</a> 4/06/2026	Operation	Compliant
<b>6. COMMUNITY INFORMATION, CONSULTATION AND INVOLVEMENT</b>					
6.1 COMMUNITY INFORMATION, CONSULTATION AND INVOLVEMENT	Subject to confidentiality, the Proponent shall make all documents required under condition 6.4 of this approval available for public inspection on request.	Noted.	Noted.		Compliant
6.3 COMPLAINTS PROCEDURE	The Proponent shall record details of all complaints received through the means listed under condition 6.2 of this approval in an up-to-date Complaints Register. The Register shall record, but not necessarily be limited to: a) the date and time of the complaint; b) the means by which the complaint was made (telephone, mail or email); c) any personal details of the complainant that were provided, or if no details were provided, a note to that effect; d) the nature of the complaint; e) any action(s) taken by the Proponent in relation to the complaint, including any follow-up contact with the complainant; and	Complaints register is available on the EA website - updated to May 2024.  <b>Website:</b> <a href="https://www.energyaustralia.com.au/about-us/what-we-do/generating-energy/tallawarra-power-station">https://www.energyaustralia.com.au/about-us/what-we-do/generating-energy/tallawarra-power-station</a>	The Complaints register published on the project website is up to date and complete with all required information. From May 2024 any community complaints were incorporated into EA's existing complaints handling system (Integrum)	Operation	Compliant

Condition Number	Requirement	Evidence Used	Findings	Development Phase	Compliance Status
	f) if no action was taken by the Proponent in relation to the complaint, the reason(s) why no action was taken. The Complaints Register shall be made available for inspection by the Secretary upon request. The Complaints Register for the project may be incorporated into an existing complaints handling system managed by the Proponent if it is demonstrated to meet the requirements of condition 6.3.	Complaints register (Integrum)			
6.4 ACCESS TO INFORMATION	<p>Before the commencement of construction until the completion of all rehabilitation required under this approval, the Proponent must:</p> <p>a) make the following information and documents (as they are obtained, approved or as otherwise stipulated within the conditions of this approval) publicly available on its website:</p> <ul style="list-style-type: none"> <li>• the EA;</li> <li>• all current statutory approvals for the project;</li> <li>• all approved strategies, plans and programs required under the conditions of this approval;</li> <li>• the proposed staging plans for the project if the construction, operation or decommissioning of the project is to be staged;</li> <li>• regular reporting on the environmental performance of the project in accordance with the reporting requirements in any plans or programs approved under the conditions of this approval;</li> <li>• a comprehensive summary of the monitoring results of the project, reported in accordance with the specifications in any conditions of this approval, or any approved plans and programs;</li> <li>• a summary of the current phase and progress of the project;</li> <li>• contact details to enquire about the development or to make a complaint;</li> <li>• a complaints register, updated monthly;</li> <li>• the Annual Reviews of the project;</li> <li>• audit reports prepared as part of any Independent Environmental Audit of the project and the Proponent's response to the recommendations in any audit report;</li> <li>• any other matter required by the Secretary; and</li> </ul> <p>b) keep such information up to date, to the satisfaction of the Secretary.</p>	<p><u>Website:</u>  <a href="https://www.energyaustralia.com.au/about-us/what-we-do/generating-energy/tallawarra-power-station">https://www.energyaustralia.com.au/about-us/what-we-do/generating-energy/tallawarra-power-station</a></p>	The required information and documentation is published on the project website and complete, correct and up-to-date. There is no evidence of the Secretary's dissatisfaction with this condition.	Operation	Compliant
6.5 COMMUNITY CONSULTATION	<p>At least one month prior to the commencement of construction of the project, or within such a period otherwise agreed by the Secretary, the Proponent shall prepare and implement a Community Consultation Program. The program shall be ongoing throughout the construction phase of the project and for at least the first 12 months of operation. The program shall include, but not necessarily be limited to:</p> <p>a) the general types of information on the timing, progress, construction, operation and environmental management of the project;</p> <p>b) the means by which the information would be provided to the community (for example, presented at regular meetings, published in regular newsletters etc);</p>	<p><u>Website:</u>  <a href="https://www.energyaustralia.com.au/about-us/what-we-do/generating-energy/tallawarra-power-station">https://www.energyaustralia.com.au/about-us/what-we-do/generating-energy/tallawarra-power-station</a></p>	<p>CCP section 7.1 states that "The following commitments outline the key tenants of our community and stakeholder engagement:...Opportunities for consultation with the community and stakeholders about timing, major milestones and mitigation measures for construction activities and proposed changes will be identified where appropriate..."</p> <p>CCP section 7.1 clearly states that "The community, user groups and stakeholders will be kept informed via the project website, social media, email/written notifications, presentations and meetings..."</p>	<p>Operation</p> <p>Operation</p>	<p>Compliant</p> <p>Compliant</p>

Condition Number	Requirement	Evidence Used	Findings	Development Phase	Compliance Status
	c)the spatial extent of the community to be consulted; and	Community Consultation Plan (CCP)	CCP section 5 clearly defines "...The spatial extent of the community that has been and will continue to be consulted covers the Shellharbour City Council and Wollongong City Council local government areas, which incorporates the adjacent suburbs of Dapto, Koonawarra and Haywards Bay..."	Operation	Compliant
	d)a mechanism through which the community can provide feedback to the Proponent in relation to the environmental management and impacts of the development. The Program shall be submitted for the approval of the Secretary, prior to the commencement of construction of the development.		CCP section 7.3 states "... EnergyAustralia will ensure that the following are available for community complaints for the life of the project (i.e. construction, commissioning and operation):... telephone number ... postal address ... email address..."	Operation	Compliant
<b>7. ENVIRONMENTAL MANAGEMENT</b>					
	The Proponent shall prepare an Operation Environmental Management Plan (OEMP) to detail an environmental management framework and the practices and procedures to be followed during operation of the project. The Plan shall be consistent with Guideline for the Preparation of Environmental Management Plans (Department of Infrastructure, Planning and Natural Resources, 2004), or its latest version, and shall include, but not necessarily be limited to: a)identification of all relevant statutory and other obligations that the Proponent is required to fulfil in relation to operation of the project, including all relevant approvals, licences, and permits;			Operation	Compliant
	b)overall environmental policies, guidelines and principles to be applied to the operation of the project;			Operation	Compliant
	c) relevant standards to be applied to the project and details of how the environmental performance of the operation of the project will be monitored and managed to meet the standards. Environmental performance issues shall include, but not be limited to – i)measures to monitor and maintain offset measures implemented in accordance with condition 3.41 of this approval, ii)methods to monitor and maintain revegetated areas (including riparian areas) during the establishment phase and long term, iii)ongoing measures to monitor and control the spread of weeds, iv)ongoing measures to control soil erosion and sedimentation; v)water management plan, prepared in consultation with the EPA, identifying clean water and dirty water (i.e. waste water streams) areas on site maps, waste water volumes, sources and pollutants, and details of the water management measures to be implemented to manage the specific pollutant streams and clean water runoff, vi)procedures for planned and unplanned water discharges from the site, and vii)emergency response procedures in the event of flooding;			Operation	Compliant

Condition Number	Requirement	Evidence Used	Findings	Development Phase	Compliance Status
7.4 OPERATION ENVIRONMENTAL MANAGEMENT PLAN	d) a description of the roles and responsibilities for all relevant employees involved in the operation of the project;	OEMP Rev 5 Letter from DPHI dated 18/06/2026	OEMP (Rev 5) and associated sub-plans, available from project website and have been approved by DPHI 18/06/2026	Operation	Compliant
	e) a means by which environmental performance can be periodically reviewed and improved, where appropriate and what actions will be taken to address identified potential adverse environmental impacts;			Operation	Compliant
	g) management policies to ensure that environmental performance goals are met and to comply with the conditions of this approval; and			Operation	Compliant
	h) the environmental monitoring requirements outlined under conditions 4.5 to 4.14 of this approval, inclusive. The Plan shall be submitted for the approval of the Secretary no later than one month prior to the commencement of operation of the project, or within such period otherwise agreed by the Secretary. Operation shall not commence until written approval has been received from the Secretary.  The Proponent must implement the approved OEMP for the project.			Operation	Compliant
	The Proponent must implement the approved OEMP for the project.			Operation	Compliant

Condition Number	Requirement	Evidence Used	Findings	Development Phase	Compliance Status
7.5 OPERATION ENVIRONMENTAL MANAGEMENT PLAN	<p>As part of the OEMP for the project, required under condition 7.4 of this approval, the Proponent must prepare and implement the following Management Plans:</p> <p>a) an Air Quality Management Plan in consultation with the EPA to outline measures to manage impacts from the project on local and regional air quality. The Plan shall include, but not necessarily be limited to -</p> <ul style="list-style-type: none"> <li>i) identification of all major sources of particulate and gaseous air pollutants that may be emitted from the project, being both point-source and diffuse emissions, including identification of the major components and quantities of these emissions,</li> <li>ii) monitoring for gaseous and particulate emissions from the project,</li> <li>iii) procedures for the minimisation of gaseous and particulate emissions from the project, including pro-active and reactive management and response mechanisms, with specific reference to measures to be implemented and actions to be taken to minimise and prevent potential elevated air quality impacts on surrounding land uses as a consequence of meteorological conditions, upsets within the project, or the mode of operation of the project at any time,</li> <li>iv) specific procedures for the management of generating efficiency and the minimisation of greenhouse gas emissions per unit of electricity generated,</li> <li>v) procedures aimed at maximising the efficiency of the start-up and shut-down cycles for the project,</li> <li>vi) provision for regular review of air quality monitoring data, with comparison of results against the predictions made in the document listed under condition 1.1c) of this approval,</li> <li>vii) plans for regular maintenance of process equipment to minimise the potential for leaks and fugitive emissions, and</li> <li>viii) a contingency plan should an incident, process upset or other initiating factor lead to elevated air quality impacts, whether above normal operating conditions or environmental performance goals/ limits; and</li> </ul>	<p>OEMP Rev 5</p> <p>Email from EPA dated 16/01/2026</p>	<p>EPA email states that the EPA have no comments on the updated OEMP.</p>	<p>Operation</p>	<p>Compliant</p>
	<p>b) a Noise Management Plan in consultation with the EPA to detail measures to mitigate and manage noise during operation of the project. The Plan shall include, but not necessarily be limited to -</p> <ul style="list-style-type: none"> <li>i) identification of the noise limits specified under this approval,</li> <li>ii) identification of operational activities that will be carried out and the associated noise sources,</li> <li>iii) details of all management methods, procedures and mitigation measures that will be implemented to control individual and overall noise emissions from the site during operation,</li> <li>iv) procedures for periodic consideration of noise impacts against the noise limits specified under this approval,</li> <li>v) noise monitoring and reporting procedures, and</li> <li>vi) procedures to generate suitable documentation for annual environmental auditing, that demonstrates that the noise limits specified under this approval are being met.</li> </ul>			<p>Operation</p>	<p>Compliant</p>
	<p>Within 3 months, unless the Secretary agrees otherwise, of:</p> <p>a) the submission of an incident report under condition 5.1 of this approval;</p>	<p>Incident register (Integrum)</p>	<p>No incidents reported</p>		<p>Not Triggered</p>
	<p>b) the submission of an Independent Environmental Audit report under condition 5.11 of this approval;</p>	<p>Nil</p>	<p>No IEA submitted during this reporting period</p>		<p>Not Triggered</p>

Condition Number	Requirement	Evidence Used	Findings	Development Phase	Compliance Status
7.7 REVISION OF STRATEGIES, PLANS AND PROGRAMS	c) the approval of any modification to the conditions of this approval; or	Project Approval 07_0124	No modifications have been approved in this audit period.		Not Triggered
	d) a direction from the Secretary under condition 1.3 of this approval;	Nil	No directions were issued by the Secretary in this audit period.		Not Triggered
	<p>the Proponent must review and, if necessary, revise the studies, strategies or plans required under the conditions of approval to the satisfaction of the Secretary.</p> <p>Where this review leads to revisions in any such document, then within 4 weeks of the review the revised document must be submitted to the Secretary for approval, unless otherwise agreed with the Secretary.</p> <p>Note: This is to ensure the strategies, plans and programs are updated on a regular basis, and incorporate any recommended measures to improve the environmental performance of the project.</p>	Noted.	Noted.		Compliant
7.8 UPDATING AND STAGING OF STUDIES, STRATEGIES AND PLANS	<p>To ensure the studies, strategies and plans for the project are updated on a regular basis and incorporate any required measures to improve the environmental performance of the project, the Proponent may submit revised studies, strategies or plans required for the project under the conditions of approval at any time. With the agreement of the Secretary, the Proponent may also submit any study, strategy or plan required under the conditions of this approval on a staged basis.</p> <p>The Secretary may approve a revised strategy or plan required under the conditions of approval, or the stage submission of these documents, at any time. With the approval of the Secretary, the Proponent may prepare the revised or staged strategy or plan without undertaking consultation with all parties nominated under the applicable condition in this approval.</p> <p>Notes:</p> <ul style="list-style-type: none"> <li>- While any study, strategy or plan may be submitted on a progressive basis, the Proponent must ensure that the existing operations on site are covered by suitable studies, strategies or plans at all times.</li> <li>- If the submission of any study, strategy or plan is to be staged, then the relevant study, strategy or plan must clearly describe the specific stage to which the study, strategy or plan applies, the relationship of this stage to any future stages, and the trigger for updating the study, strategy or plan.</li> </ul>	Noted.	Noted.		Compliant

Conditions:	92
Compliant	62
Non-Compliant	1
Not Triggered	29
Auditable items:	92

## Appendix B – Action Status Table

Source	Condition of Consent Number	Action Proposed	Proposed Completion Date	Status	Action Completed
Nil					

# Appendix C – Compliance Report Declaration Form

## Appendix D – Compliance Report Declaration Form Template


Compliance Report Declaration Form	
Project Name	Tallawarra B Gas Turbine Power Station
Project Application Number	07_0124
Description of Project	Construction and operation of a gas-fired power station and associated infrastructure, known as the Tallawarra B Power Station Project.
Project Address	Lot 109, DP 1050302, Yallah Bay Road, Yallah, Wollongong local government area
Proponent	EnergyAustralia Tallawarra Pty Ltd
Title of Compliance Report	Operation Compliance Report 2
Date	4/06/2026

I declare that I have reviewed the contents of the attached Compliance Report and to the best of my knowledge:

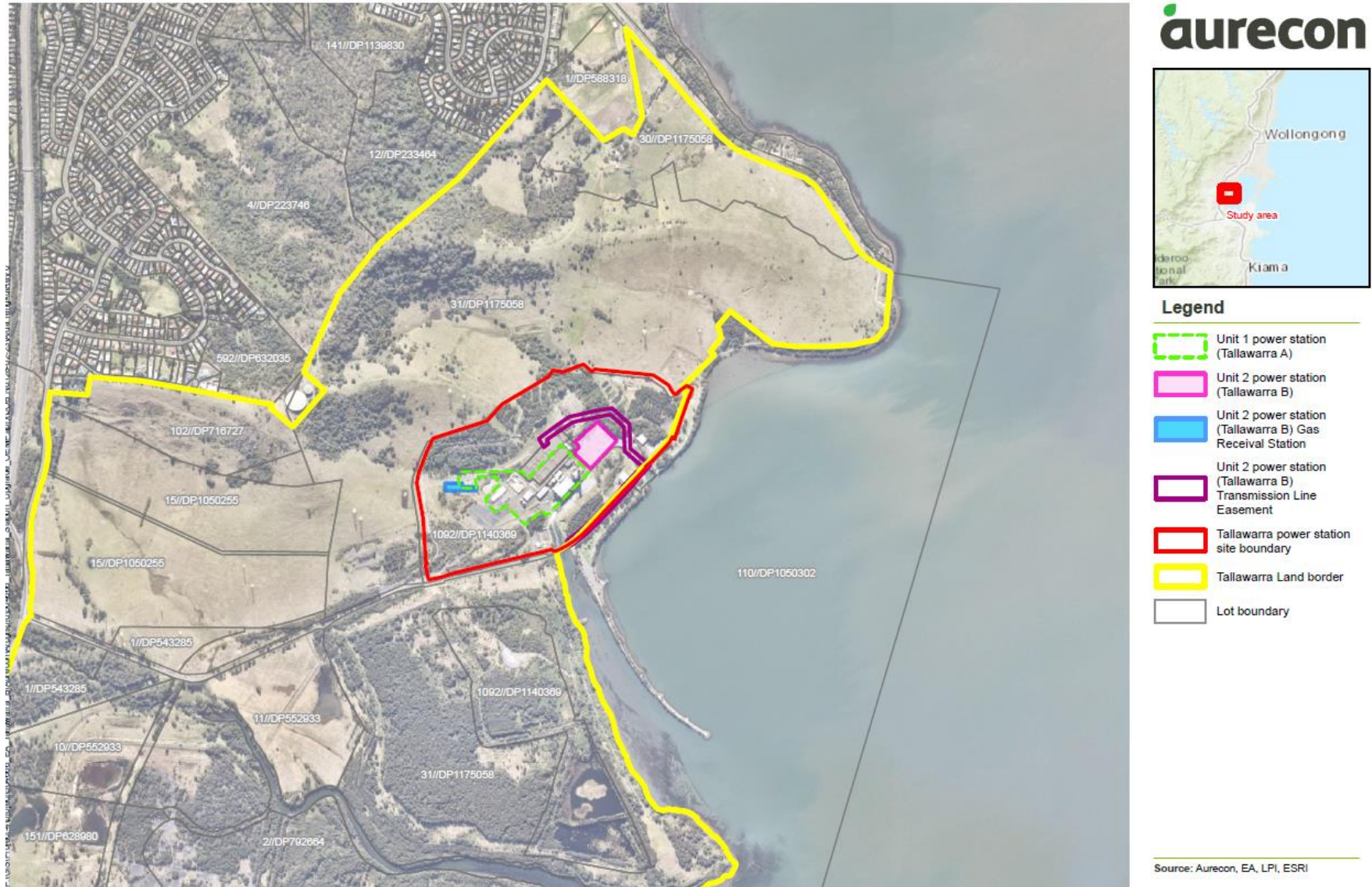
- i. the Compliance Report has been prepared in accordance with all relevant conditions of consent;
- ii. the Compliance Report has been prepared in accordance with the Compliance Reporting Requirements;
- iii. the findings of the Compliance Report are reported truthfully, accurately and completely;
- iv. due diligence and professional judgement have been exercised in preparing the Compliance Report; and
- v. the Compliance Report is an accurate summary of the compliance status of the development.

Notes:

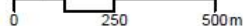
- Under section 10.6 of the Environmental Planning and Assessment Act 1979 a person must not include false or misleading information (or provide information for inclusion in) a report of monitoring data or an audit report produced to the Minister in connection with an audit if the person knows that the information is false or misleading in a material respect. The proponent of an approved project must not fail to include information in (or provide information for inclusion in) a report of monitoring data or an audit report produced to the Minister in connection with an audit if the person knows that the information is materially relevant to the monitoring or audit. The maximum penalty is, in the case of a corporation, \$1 million and for an individual, \$250,000; and
- The Crimes Act 1900 contains other offences relating to false and misleading information: section 307B (giving false or misleading information – maximum penalty 2 years' imprisonment or 200 penalty units, or both).

Name of Authorised Reporting Officer	Kyle Brown
Title	Environment & Safety Specialist
Signature	 4/06/2026
Qualification	Bachelor of Science (Environment)
Company	EnergyAustralia Tallawarra Pty Ltd
Company Address	Lot 109, DP 1050302, Yallah Bay Road, Yallah, Wollongong local government area

# Appendix D – Figures and Photos



1:16,000



Projection: GDA 1994 MGA Zone 56

Tallawarra Power Station Operational Environmental Management Plan

FIGURE: General project layout

Figure 6-1: Tallawarra A and B power station areas



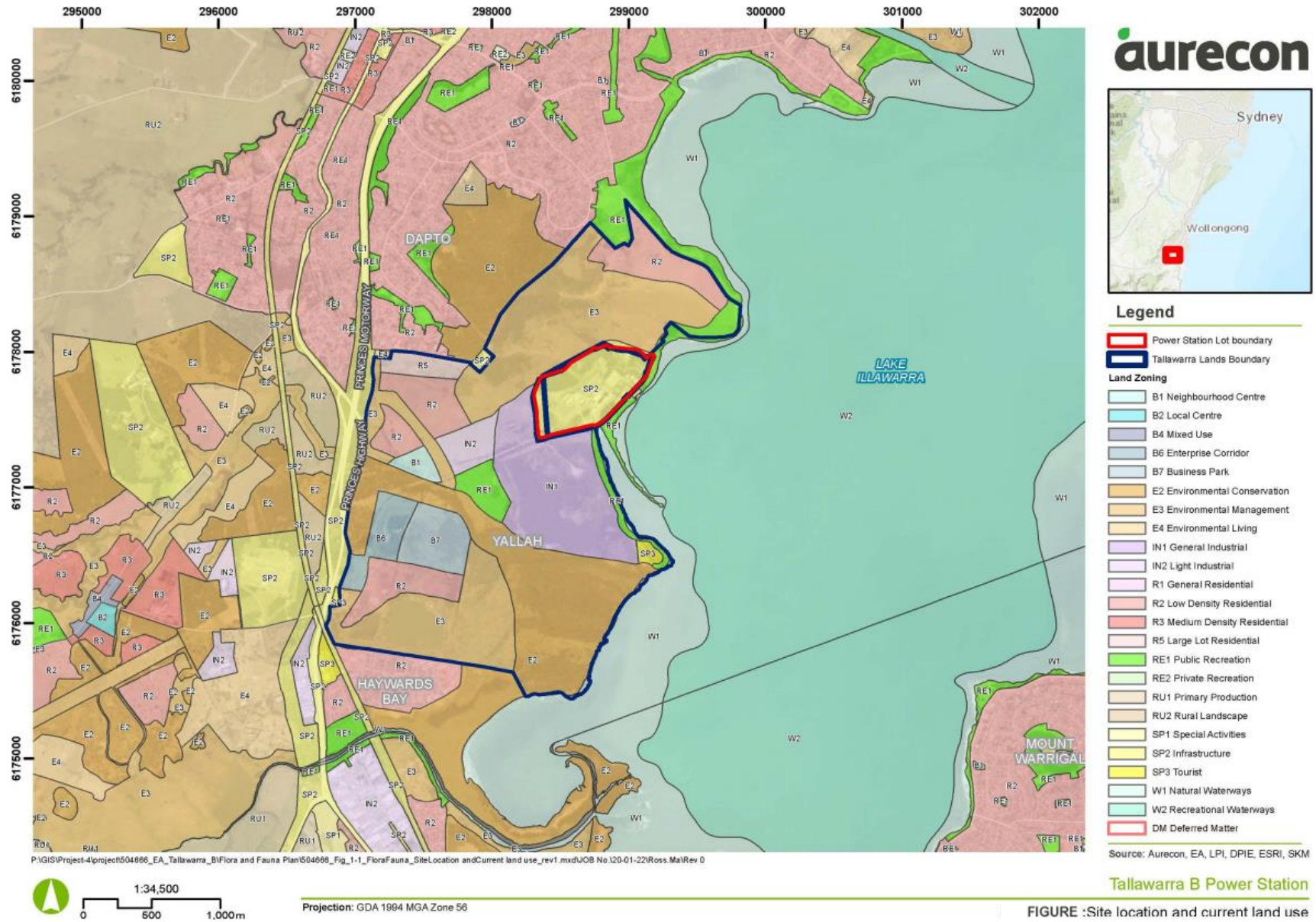


Figure 6-3: Tallawarra Power Station site location and adjacent land uses