



Community Liaison Group Meeting No. 2

8 December 2011

AGENDA

Time	Item No	Topic	Presenter
4:30pm	1	Welcome & Introductions	Brendan Blakely Elton Consulting
	2	Marulan Project Update	Marcello Diamante TRUenergy
	3	Discussion	All
6:30pm	4	Thank you and Close	Brendan Blakely



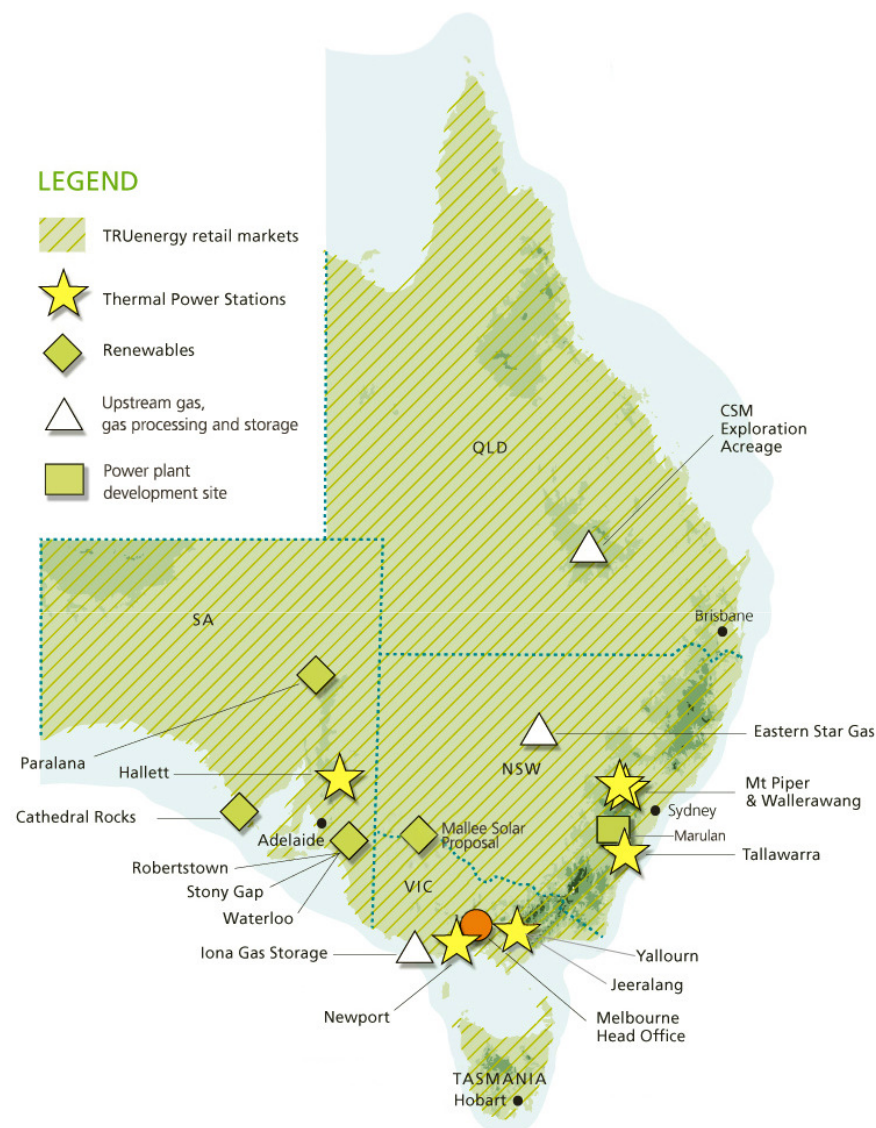
Item 2: Marulan Project Update



TRUenergy Overview

4

RETAIL ASSETS		
Customers	2.8 million customer accounts	
ELECTRICITY ASSETS		(MW)
Yallourn	Coal-fired power station	1,480
Tallawarra	Gas-fired power station (stage A)	435
Tallawarra	Stage B (permitted)	500
Hallett	Gas-fired power station	203
Marulan	Gas-fired power station (permitted)	700
Delta Western Gentrader (Mt Piper & Wallerawang)	Offtake Coal-fired power stations	2,400
Newport & Jeeralang	Offtake from gas-fired power stations	966
Wind farms - Waterloo - Cathedral Rocks	Development & management of wind assets in Australia	144
Petratherm	10% equity in Paralana geothermal project	30
Mallee Solar Park	Proposal for solar power station	180
GAS ASSETS		
Iona gas storage and processing plant	22 PJ gas storage facility	
Eastern Star Gas	20% permits	
Upstream gas	Equity in Queensland CSM developments	



Marulan Development Overview

Project Background (ReCap)

- TRUenergy acquired the Marulan Development Site from the State last year with formal transfer completed in March 2011.
- The Marulan site was originally developed as 2 stand alone & separately owned Projects (by Delta Electricity and Energy Australia) on the same land title.

Site 1: 2x OCGT → Peaking Plant only

Site 2: 2x OCGT → CCGT Conversion

- TRUenergy will continue to progress development of the Project as a single owner site and is targeting notice to proceed as a Peaking Plant in Q1 2012 subject to Board Approval.



Marulan Project Update Summary

Phase 1 Concept Study Outcome

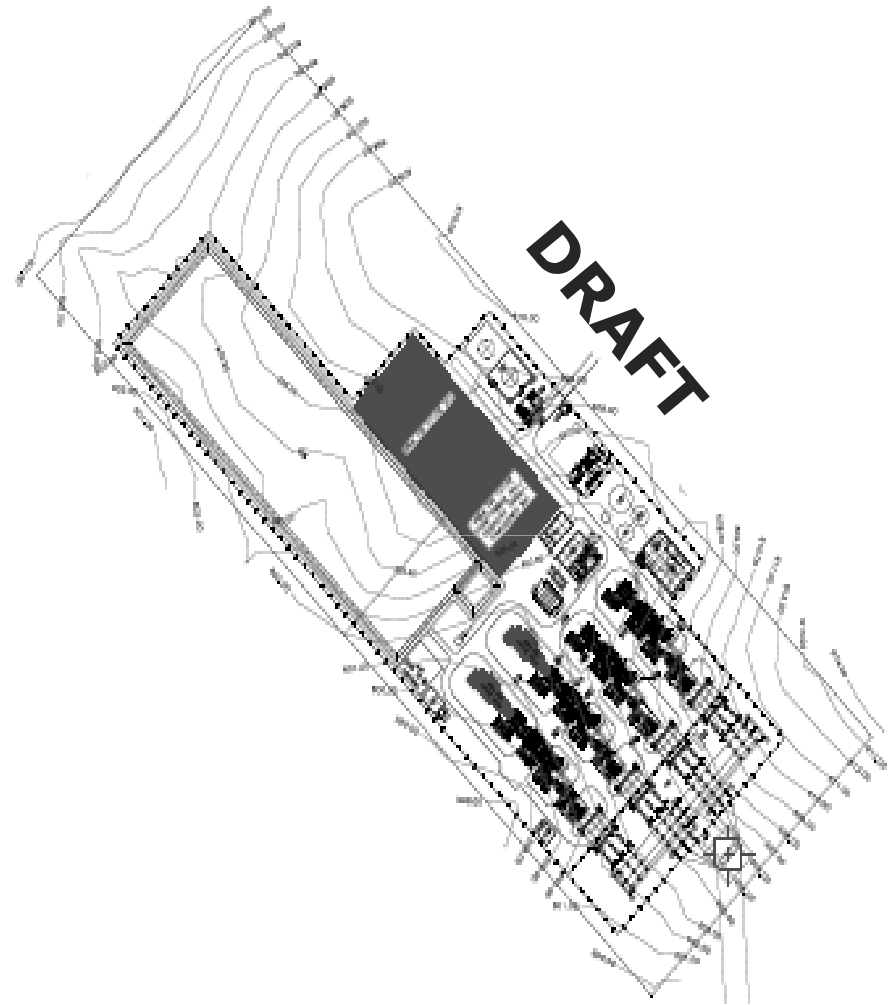
- The existing approved site layout is wide enough to accommodate all 4 E Class turbines on 1 site – Talking to DoP on revised layout.

Benefits

- Construction lay down area can sit on second site reducing habitat removal.
- Connecting a water pipeline to the Highland Source Water Pipeline would avoid trucking water to site.
- A shorter line will require slight alteration to the proposed electrical line design but still within the approved corridor.
- Potential to improve Visual.

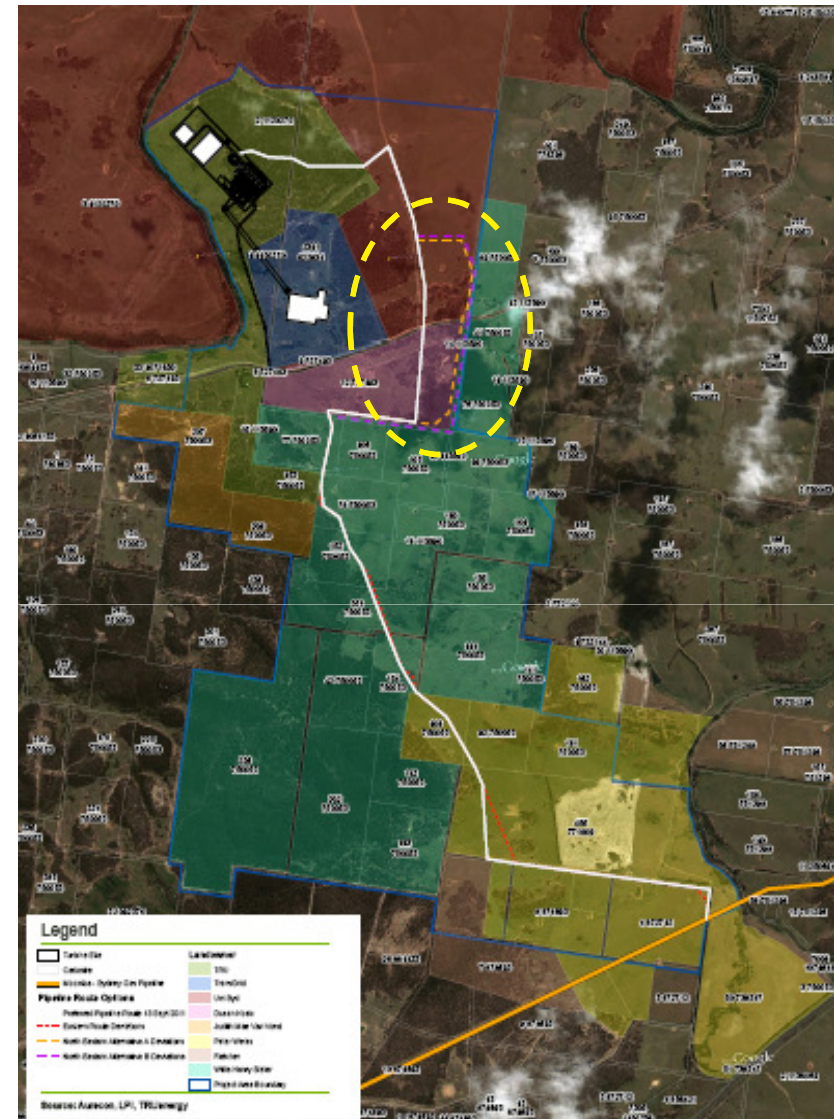
Gas Turbine Selection

- Negotiating with Manufacturer and finalising technical layout - on target to have contract in place in Q1 2012



Gas/Water Pipeline Infrastructure Connections

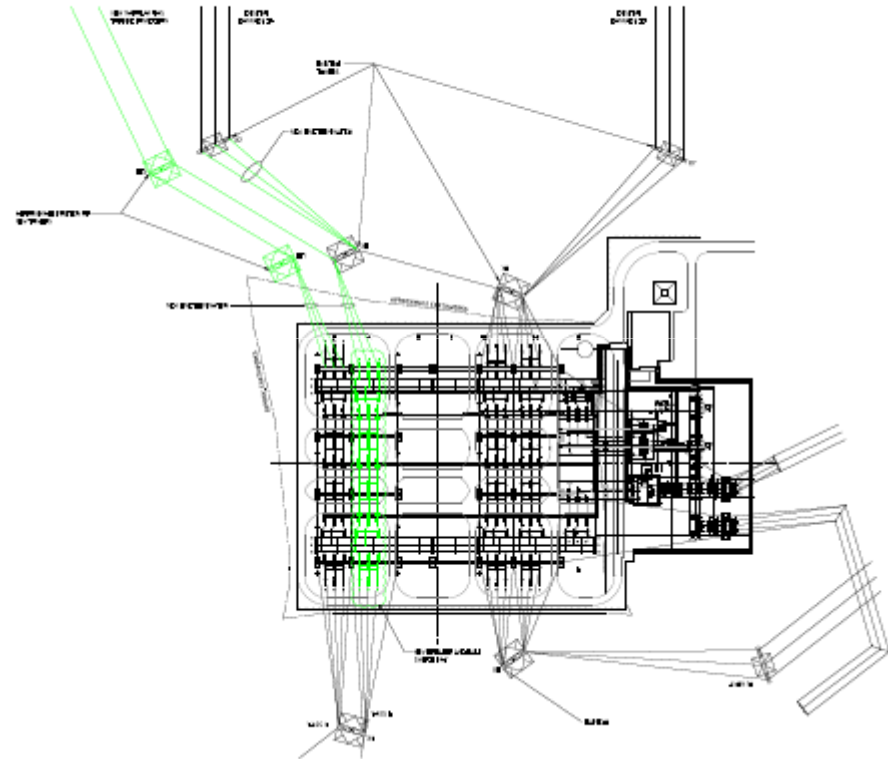
- Pipeline route deviates from existing approved corridor along a section (circled in yellow) to avoid erosion gullies, watercourses and aligns with existing easement corridor.
- Environmental survey identified net environmental benefit from route realignment.
- Talking to DoP on pipeline corridor modification and inclusion of water pipeline into Project Approvals – preparing formal modification application.
- All affected landowners have been consulted on the preferred route and easement documentation is being prepared for further discussion.
- Pipeline licence application submitted in October – Native Title issues being addressed.
- Talking to Goulburn-Mulwaree Council on connection to existing Highland Source Water Pipeline – alternative is to truck water to site.



Electrical Infrastructure Connections

For Illustrative Purposes only

- TRUenergy submitted formal Connection Enquiry to TransGrid in August to progress connection application process.
- Connection option has been determined and TransGrid working on delivery of the Connection Offer document by end Q1 2012
- Connection Offer is critical path to the Project with the potential to delay start date.



Canyonleigh Road Upgrade

- Project Approvals require sealing of Canyonleigh Rd from site entrance to Brayton Rd intersection **before** construction can commence on site.
- TRUenergy has investigated road upgrade requirements by:
 - completing site investigation report
 - consulting with Goulburn-Mulwaree Council and Upper Lachlan Shire.
 - Undertaking pavement investigation
 - Developing design brief to support tender.
- TRUenergy is targeting completion of road upgrade in late March based on current project timeline.



Marulan Website

- Website covering the Marulan Power Station Project up and running.

www.truenergy.com.au/marulan

Tabs Covering:

- Proposed Site
- Project Update (link to Permits)
- Community (links to Minutes)
- Talk to Us (Contact)
- Website will expand as project moves from development phase into construction and operating phase.

Marulan power station

Proposed site Project update Community Talk to us

Proposed site

TRUenergy is proposing to construct and operate a gas fired power station with a capacity of 700 MW in the New South Wales Southern Tablelands region near the township of Marulan. When built, it will be capable of meeting approximately 5% of New South Wales's capacity requirements.

Acquired from Delta Energy and EnergyAustralia in March 2011, we are now responsible for the development of the Marulan project.

What will it look like?

We are proposing to develop the 700MW power station as a peaking plant, which will have fast start capability and generally operate for short periods of time to meet high demand events in New South Wales. These events generally occur during hot weather in summer or cold weather during winter.

More information

View location of proposed Marulan site

Learn about gas fired generation



Marulan power station

Proposed site Project update Community Talk to us

Project

As part of the Marulan acquisition, we received the existing permits and planning approval for the development of two power stations from Delta Energy and EnergyAustralia.

For more information about these project applications, please click the relevant link below.

1. Delta Electricity Gas Fired Power Station – [Project Application](#)
2. EnergyAustralia Gas Fired Power Station – [Project Application](#)
3. Concept Plan – [Gas Fired Power Stations and Associated Infrastructure](#)

For more information about New South Wales's planning process, please visit the NSW Planning & Infrastructure at www.planning.nsw.gov.au

Next steps

As the power stations to be built at Marulan were originally going to be operated by two separate businesses, we are currently reviewing the concepts to identify if efficiencies in infrastructure and operations can be achieved.

We are also looking at ways we can minimise the potential environmental impact during construction and operation of the proposed development.



Marulan Website


Marulan power station

Proposed site Project update **Community** Talk to us

Community

Community consultation gives us a greater understanding of your opinions, priorities and expectations. Your feedback plays an important role in helping us to better manage our project.

As part of our commitment to community consultation, we have set up a Community Liaison Group (CLG) to provide regular updates about our development to interested community members. You can view more information about our CLG below.



We will also keep the wider community informed about our Marulan development through newsletters, our website and progress updates as required. To view our community updates view the More Information section below.

More information

- [Marulan CLG Terms of Reference](#)
- [TRUenergy Marulan Community minutes and presentation CLG](#)


Marulan power station

Proposed site Project update Community **Talk to us**

Contact us

TRUenergy understands the value of building strong relations with its neighbours and stakeholders. We are committed to consulting with individuals and groups who have a particular interest in the Marulan project. Personal information you provide will be kept in accordance with our Privacy Policy.

To contact us, please complete our online [Talk to us form](#)




Key Activities Going Forward:

1. Seek acceptance of modification of existing approvals from Department of Planning on revised site layout, pipeline route and inclusion of water pipeline connection to Highland Source Water Pipeline. This is required before notice to proceed can be issued.
2. Work with TransGrid to Deliver Connection Offer document in Q1 2012.
3. Detailed survey and design of required infrastructure connections.
4. Progress design and tender to upgrade Canyonleigh Rd.
5. Finalise Gas Turbine Selection.
6. TRUenergy is targeting notice to proceed in March 2012 subject to Board Approval.

