



EnergyAustralia

LIGHT THE WAY

EnergyAustralia Yallourn

**BUSHFIRE MITIGATION PLAN
2026 / 2027**

© 2018 Australia, EnergyAustralia Yallourn Pty Ltd

The intellectual property rights in the material included in this document is solely owned by or licensed to EnergyAustralia Yallourn Pty Ltd. This work is copyright. Other than as permitted by law, no part of it may be reproduced, stored in a retrieval system or transmitted in any form or by any process without prior written permission.

VERSION HISTORY

Version	Date	Author	Reason
1.0	April 2011	Paul Metlikovec	Initial Issue
2.0	September 2011	Otto Stumpf	Changes as a result of advice from ESV
3.0	July 2012	Otto Stumpf	Changes made to accommodate the recommendations from an internal audit conducted in June 2012
3.1	September 2012	Rachel Alexander	Corporate Re-brand and minor formatting changes
4.0	June 2013	Otto Stumpf	Periodic Review
5.0	May 2014	Otto Stumpf	Periodic Review / To meet the new regulations, audit recommendations and broader scope
6.0	May 2015	Otto Stumpf	Periodic Review
7.0	May 2016	Otto Stumpf	Periodic Review
8.0	May 2017	Otto Stumpf	Minor changes to the objective (clause 6), the preventative strategies (clause 8) and clause 9.2/10
8.1	June 2017	Rachel Alexander	Update to References Required
9.0	June 2018	Brad Miller	Periodic Review
10.0	Nov 2019	Brad Miller	Periodic Review
10.1	Dec 2019	Brad Miller	Review to address ESV feedback comments
11.0	June 2020	Brad Miller	Periodic Review
12.0	June 2021	Brad Miller	Annual Review
13.0	June 2022	Brad Miller	Annual Review
13.1	September 2022	Brad Miller	Address feedback comments from ESV review of 2022/23 plan
14.0	October 2023	Mathew Howlett	Periodic Review
14.1	September 2023	Mathew Howlett	Address feedback comments from ESV review of 2022/23 plan
15.0	May 2024	Mathew Howlett	Annual Review
15.1	October 2024	Mathew Howlett	Address feedback comments from ESV review of 2024/25 plan
16.0	March 2026	Mathew Howlett	Periodic Review

AMENDMENTS IN THIS VERSION

No.	Amendment Summary	Amended By
Version 16.0		
1.	Update date of plan and review.	M Howlett
2.	Update purpose and scope.	M Howlett
3.	Update Electric Line Clearance Plans for EAY and Ausnet Assets.	M Howlett
4.	Update definitions.	M Howlett
5.	General update of wording and procedure references.	M Howlett
6.	Remove reference to Appendix 4 being Maximo Work Orders	M Howlett
7.	Update reference to most recent EnergySafe approved Cert 2 courses	M Howlett
8.	Update reference to Maximo Work Order process.	M Howlett
9.	Include Mine TARP for High Fire Danger Periods as an appendix.	M Howlett

TABLE OF CONTENTS

1	PURPOSE AND OBJECTIVES	5
2	SCOPE	5
3	CONTACTS	6
4	DISTRIBUTION	7
5	INTRODUCTION	7
6	BUSHFIRE MITIGATION POLICY	8
7	DEFINITIONS	8
8	SITE RESPONSIBILITIES	9
8.1	MANAGER RESPONSIBILITIES.....	9
8.2	SITE MANAGEMENT PROCEDURE FOR THE BMP.....	9
8.3	SITE MAP.....	9
9	PREVENTATIVE STRATEGIES	10
10	LIST OF ALL WORKS	10
10.1	ELECTRICAL ASSET MANAGEMENT.....	11
10.1.1	<i>Design and installation</i>	11
10.1.2	<i>System testing and maintenance</i>	11
10.1.3	<i>Pole and Overhead Lines Asset Inspection</i>	11
10.1.4	<i>Thermography Surveys</i>	12
10.1.5	<i>Asset Maintenance</i>	12
10.1.6	<i>Vegetation Management</i>	12
10.1.7	<i>Scheduling and Prioritisation of Works</i>	13
10.2	NON ENERGYAUSTRALIA OVERHEAD LINES.....	15
10.3	WILDFIRE RISK MITIGATION COMMITTEE.....	15
10.4	HOT WORKS.....	16
10.5	DAYS OF TOTAL FIRE BAN.....	16
10.6	HIGH FIRE DANGER PERIODS.....	16
10.6.1	<i>Trigger Action Response Plan (TARP) for High Fire Danger Periods</i>	17
10.7	INCIDENT RESPONSE, REPORTING AND INVESTIGATION.....	17
10.7.1	<i>Hazard Reporting</i>	17
10.7.2	<i>Incident Response</i>	17
10.7.3	<i>Incident Reporting</i>	17
10.7.4	<i>Incident Investigation</i>	19
10.8	TRAINING AND COMPETENCE.....	19
10.9	EXTERNAL AGENCIES.....	23
10.10	FIRE MANAGEMENT IN THE MINE.....	23
10.11	FIRE DETECTION.....	24
10.12	FIRE EXTINGUISHERS.....	24
10.13	VEHICLE AUTHORISATION.....	24
10.14	RETICULATED WATER FIRE SUPPRESSION SYSTEM.....	24
10.15	CONTRACTORS.....	24
11	MONITORING	25
12	AUDITING AND REPORTING	25
13	REFERENCES	26
	APPENDIX 1 - ELECTRIC LINE CLEARANCE PLAN – EA ASSETS	27
	APPENDIX 2 – ELECTRIC LINE CLEARANCE PLAN – AUSNET ASSETS	28
	APPENDIX 3 - AT RISK ELECTRIC LINES DETAIL	29

APPENDIX 4 – YALLOURN MINE OPERATIONAL TRIGGER ACTION RESPONSE PLAN (TARP) FOR HIGH FIRE DANGER PERIODS
30

APPENDIX 5 - ELECTRICITY SAFETY (BUSHFIRE MITIGATION) REGULATION REFERENCE TABLE..... 31

Uncontrolled when printed

1 Purpose and Objectives

The objective of the Bushfire Mitigation Plan is to ensure that there are programs and processes at the Yallourn site to provide a controlled reduction in fire risk from the site assets to prevent fire initiation, as well as mitigating against the impact and spread of fire generated from sources both internal and external to the site.

The specific objectives of the Plan are:

- To fully comply with the Electricity Safety Act and Electricity Safety (Bushfire Mitigation) Regulations
- To describe the processes and procedures for monitoring the implementation and effectiveness of the bushfire mitigation strategies and programs for the site.
- To maintain a program of asset inspections consistent with the assessed level of risk
- To operate and maintain the plant and facilities with controls to minimise the risk of initiation and/or spread of fire.
- To manage vegetation fuel loads and asset clearances in a timely manner, for minimum fire risk, consistent with relevant standards and regulation
- Assess the performance of programs supporting this Plan and strive for continual improvement.
- Communicate with external agencies through the Wildfire Risk Mitigation Committee

Whilst the effective application of this Plan does lead to reduced fire risk, there is still some residual risk. Consequently, there is a need to manage fire response, and this is managed under the strategic framework of the site Emergency Response Plan, document SHEMS12-SHE-L01, which provides guidance for the escalation of fire response through Estate Services, FRV, CFA and other combat agencies as required.

This procedure has been developed to document the programs and processes in place as a plan to comply with the Electricity Safety (Bushfire Mitigation) Regulations and the requirements of the FRV, CFA and Dept of State, Development and Business Innovation.

2 Scope

This Bushfire Mitigation Plan provides an integrated set of procedures to lead a controlled reduction in fire risk to and from all site assets, through systems of asset inspection and management, fuel reduction, ignition source containment and fire control.

This procedure shall be followed by all responsible personnel who implement the Bushfire Mitigation Plan and the nominated responsible officer who reviews the plan.

The Bushfire Mitigation Plan must be reviewed annually, updated and checked against the current Electricity Safety (Bushfire Mitigation) Regulation.

In accordance with the Energy and Land Legislation Amendment (Energy Safety) Act 2025, the Bushfire Mitigation Plan is required to be submitted 5 years after the most recent acceptance of the bushfire mitigation plan that applies to the at-risk electric lines.

3 Contacts

Specified Operator	EnergyAustralia Yallourn Pty. Ltd
ACN	065 325 224
Trading as	EnergyAustralia Yallourn Pty Ltd
Office Address	Eastern Road Yallourn, Victoria, 3825
Postal Address	PO Box 444 Moe, Victoria, 3825
Telephone	(03) 5128 2000

Table 1 Specified Operator

Person Responsible for Plan Preparation	Mathew Howlett
Position	Mine Risk & Compliance Lead
Office Address	Eastern Road Yallourn Victoria, 3825
Postal Address	PO Box 444 Moe Victoria, 3825
Telephone	0400 054 489
Email	mathew.howlett@energyaustralia.com.au

Table 2 Responsible Person - Plan Preparation

Person Responsible for Plan Implementation	Lance Wallace	Paul Gridley
Position	Mine Leader	Estate Services Lead
Office Address	Eastern Road Yallourn Victoria, 3825	
Postal Address	PO Box 444 Moe Victoria, 3825	
Telephone	03 5128 4044	03 5128 2150
Email	lance.wallace@energyaustralia.com.au	

Table 3 Responsible Person - Plan Implementation

Emergency Contact Number for Immediate Action	<i>The EnergyAustralia Yallourn emergency services control room is staffed 24x7 and is the initial contact point for all emergencies.</i>
Telephone	1800 04 3333
Email	paul.gridley@energyaustralia.com.au

Table 4 Emergency Contact**4 Distribution**

Copies of this document have been issued to Energy Safe Victoria

A hard copy of the Yallourn Bushfire Mitigation Plan (BMP) will be available at the EnergyAustralia Yallourn principal office between the hours of 8:00am and 4:00pm weekdays; please contact the Administration Leader on telephone 5128 2803 for a current copy. Copies of the plan are available to the public for inspection. The EnergyAustralia Yallourn address is:- Eastern Road Yallourn Vic 3825. All hard copies will be stamped as uncontrolled.

The current approved version of the Yallourn BMP can be found online at the Energy Australia website:

<https://www.energyaustralia.com.au/about-us/energy-generation/yallourn-power-station/ensuring-we-do-right-thing>

5 Introduction

EnergyAustralia Yallourn Pty Ltd is the private owner and operator of the Yallourn W Power Station and the adjacent Yallourn Mine which are located in the Latrobe Valley approximately 150 km's east of Melbourne. EnergyAustralia Yallourn's operations are located within the City of Latrobe; the Power Station, Mine and buffer zones cover some 5,500 hectares.

The Yallourn Mine is one of two operational large open cut brown coal mines in the Latrobe Valley in Victoria, with a third open cut brown coal mine in Hazelwood now undergoing rehabilitation following cessation of mining operations.

The Yallourn Mine coal mining operations use slope mining methodology with dozers and feeder breakers excavating and loading coal onto conveyors. Coal is transported by a series of conveyors to a 30,000 tonne raw coal bunker, which provides approximately 12 hours of coal reserves for the Yallourn W Power Station.

The Mine and the Power Station operate 24 hours per day, 365 days per year.

Mining operations are currently located within Maryvale Field of the Yallourn open cut mine. Coal mining commenced full operation in the Maryvale field from the start of 2015. Worked out sections of the mine are progressively rehabilitated in accordance with an approved Rehabilitation Master Plan, following mining and overburden dumping. This results in progressive shaping and stabilisation of overburden batters and dumps, coal floor coverage and some coal batter coverage. Routine maintenance programs manage the fuel loads in and around the mine areas.

Effective from the 5th of September 2002, EnergyAustralia Yallourn established a Mine Alliance contract with Roche Thiess Linfox Joint Venture (RTL), for the management and operation of the mine. The Mine Alliance contract includes operations and maintenance activities in the mine. The RTL Joint Venture, now RTL Mining and Earthworks P/L, has developed and implemented a certified SHEQ system for the management of safety, health, environment, and quality parameters for all those activities included within the scope of the Mine Alliance contract. The Bushfire Mitigation Plan forms part of EnergyAustralia Yallourn's certified HSE Management System.

EnergyAustralia Yallourn maintains a high standard of risk management whilst achieving its primary role of coal mining and electricity generation. It operates under certified standards for health, safety and environmental management.

The high inherent risks that bushfires pose to business assets, production, health, safety, and the environment has necessitated the implementation of numerous controls to mitigate the risk of bushfire. Furthermore, a well-trained response team along with fixed reticulated and mobile fire suppression systems provides the resources to control bushfires within the property boundary.

This bushfire mitigation plan has been developed and implemented to manage the risks to assets (including at risk electric lines) and personnel from bushfires and fires which may initiate within the site itself and those which may initiate externally and infiltrate the mine. EnergyAustralia Yallourn has site plans showing the at-risk electric lines on the site (Appendix 1 & Appendix 2) and these are available to Energy Safe Victoria and other regulatory bodies upon request.

6 Bushfire Mitigation Policy

EnergyAustralia Yallourn, as a specified operator, is committed to managing the site to mitigate against the spread of fire that initiates internally as well as the infiltration of external fires. This includes a commitment to protect at-risk electrical lines in compliance with the Electricity Safety Act and associated Electricity Safety (Bushfire Mitigation) Regulations. This will be achieved by the application of various strategies including:

- Monitoring the actions from the Bushfire Mitigation Plan through the Wildfire Committee
- Periodic inspection
- Proactive operation and maintenance plans
- Monitoring of plant and surrounding environment
- Reporting of fires
- Quick response to the extinguishing of fires
- The provision of firefighting systems, and
- Assisting fire control agencies

7 Definitions

Bushfire An unplanned vegetation fire. Includes grass fires, forest fires and scrub fires (Australian Disaster Resilience Knowledge Hub).

At-Risk electric line – means an electrical line (other than private electric line) that is above the surface of land and in a hazardous bushfire risk area (Electricity Safety Act 1998).

Specified operator – means the operator of an at risk electric line but does not include a major electricity company (Electricity Safety Act 1998).

8 Site Responsibilities

8.1 Manager Responsibilities

The Mine Leader is responsible to ensure that the Bushfire Mitigation plan is developed, managed and implemented for the Yallourn Mine. The Mine Leader is responsible for the development of SHEMS13-SHE-L04 - Mine Fire Control Management Plan and the management of fuel reduction in the Mine area.

The Estate Services Lead is responsible for maintaining emergency fire response capability for the site, chairing the Wildfire Risk Mitigation Committee and developing/implementing procedures applicable to Estate Services to minimise the bushfire risk.

The Mine Risk & Compliance Lead and the Electrical Compliance Specialist are responsible for the preparation/update of the Bushfire Mitigation Plan for the Yallourn site.

The Team Engineer Electrical is responsible for the development and implementation of procedures and process for the maintenance and operation of Energy Australia overhead power lines at the Yallourn site.

8.2 Site Management Procedure for the BMP

The Station Operating Procedure SHEMS11-SHE-P015 ensures that the Bushfire Mitigation Plan is reviewed annually, updated and checked against the current regulation, then sent to ESV before 1 July to ensure compliance with the Regulation.

8.3 Site Map

The site plan shown in appendices 1 & 2 displays the overall area of the Yallourn site. The Mine is a dynamic operation, and the overhead lines are re-routed to meet the mining requirements. Single line drawings and layout drawings are continually updated to identify the overhead lines on site. The up-to-date single line and layout drawings are available to Energy Safe Victoria upon request but not included as an attachment to this plan.

9 Preventative Strategies

The preventative strategies to minimise the risk of the 'at-risk' electric lines and other plant starting fires at the Yallourn site are as follows:

- The overhead reticulation system is fitted with protection systems which reduce the potential resulting from an uncontrolled release of electrical energy including:
 - Suppression of auto-reclose systems
 - Neutral Earth Resistors
 - Circuit Breakers
 - Air break switches
- Management of the overhead reticulation lines including:
 - Installation to design
 - Periodic inspections
 - Maintenance of overhead lines infrastructure
 - Thermography surveys
- Management of the Fire Control Management Plan including:
 - Maintenance and management of a reticulated fire suppression system to provide a source of water to effectively extinguish fires
 - Management of firefighting equipment on site
 - Maintaining a process to ensure vehicles and mobile plant are suitably equipped and modified to enter a fuel rich environment
 - Management of hot works on the site including specific requirements for conducting hot works on days of Total Fire Ban
- Maintenance of an emergency response procedure for the site including:
 - Managing a process to detect, report and extinguish fires in or near the Yallourn site
 - Fire response training of site personnel
 - Maintenance of an effective communication system
 - Assisting fire control agencies in the management and investigation of fires on and off site
- Wildfire risk mitigation program requiring regular meetings between stakeholders to update the plan for:
 - Implementation of a fuel reduction program both on site and in surrounding areas prior to and during the fire season
 - Fire hazard removal as well as the preparation of strategic fire breaks to ensure that the Power Station, Mine and other critical assets are protected against bushfire occurring on or external to the EnergyAustralia Yallourn property
- Having trained and competent personnel to implement the bushfire mitigation plan.

Managers across the site have been allocated specific responsibilities to enact the above preventative strategies. A list of the relevant site procedures is tabled in section 13 References.

10 List of all Works

The Yallourn site maintenance and line clearance program is conducted to reduce the potential for powerlines to be impacted by fire.

Regardless of the activity, **no live work is permitted to be conducted at the Yallourn Mine site.** Any works that are conducted within the safe approach distance to powerlines and associated assets requires assessment of the works and isolation of power in compliance with the Yallourn Mine Safety Rules – Access to Apparatus procedure prior to the works being undertaken.

10.1 Electrical Asset Management

The Mine procedure “Management of LV & HV Overhead Distribution System” documents and details the management of the site’s high voltage and low voltage overhead reticulation system. The document covers the design, maintenance and vegetation management methods for the site.

EnergyAustralia Yallourn have implemented a site Overhead Pole Register which provides up-to-date and current information for each asset including last completed inspection, last completed thermography survey, status of defects and Maximo Work Order reference.

10.1.1 Design and installation

All new overhead power line installations are designed to meet the site Electrical Safety Management Scheme and the regulator’s installation standards and design accounts for conductor clearances, sag sway of lines, surge diverters, spreaders, earth grids and pole location numbering.

Newly installed installations are inspected by a suitably qualified person who was not involved in the design to confirm installation has been completed according to the design parameters. The inspection process and requirements are documented in the site procedure Management of HV & LV Overhead Distribution System (YMA-OPS-PR-0374).

The overhead lines at Yallourn are occasionally relocated and/or regularly extended as the Mine progresses. Subsequently there is not cyclic replacement program, rather overhead lines are operated and maintained on a condition basis.

10.1.2 System testing and maintenance

Functionality of assets and protection systems is periodically tested, and regular maintenance is conducted to prevent faults and ensure system functionality to reduce potential for fire initiation.

The performance of the system is tested via:

- Routine pole earth grid testing
- 5-yearly testing of substation transformer and circuit breakers
- Routine Air Break Switch inspection, testing and maintenance
- Pole integrity tests which are conducted annually with all poles on a cycle to be tested at a frequency of no greater than 37 months.

The detailed requirements for testing and maintenance of assets is documented in the site procedure Management of HV & LV Overhead Distribution System (YMA-OPS-PR-0374).

10.1.3 Pole and Overhead Lines Asset Inspection

Pole and overhead lines asset inspections are initiated annually via Maximo Work Order with inspections conducted by a third-party inspector who is required to have the following competencies (or relevant equivalent):

- UETTDRDP11A – Inspection Overhead Poles
- UETTDREL18A – Inspect and treat poles
- Certificate II in ESI - Asset Inspection.

Inspection cycles account for ensuring that each pole that is registered is inspected and treated within the mandated 37-month period with a scope of works sent to the company conducting the inspections prior to undertaking these works, and a register of all findings from the inspection provided upon completion of the inspections.

Requirements for asset inspections that are included in the scope of works include:

- EnergyAustralia Yallourn provision of list of poles to be inspected in the form of a excel spreadsheet which contains details of each pole to be inspected
- Service provider provision of competency documentation for asset inspector conducting works
- Service provider requirement to verify suitability for continued operation and to identify any actual or potential defects requiring remediation

- Service provider requirement to conduct the following as part of pole inspection:
 - Pole treatment
 - Ground level Overhead Line inspection
 - Survey of wooden crossarms (Drone survey preferred)
- Service provider provision of condition report to EAY upon completion of inspection
- Service provider recommendations on serviceability of assets upon completion of inspection

Inspection reports are reviewed and any rectification works that are required to be undertaken as a result of the inspections are entered as Work Orders in Maximo with works prioritised and tracked to completion.

The site overhead pole register is updated upon completion of all inspections to record inspection dates, defects identified and Maximo Work Order number for tracking rectification of defects to completion.

Site personnel who hold as a minimum a qualification of Electrical Worker – O/H Lines accompany the Line Inspector as verification that all required poles have been inspected in accordance with the scope of works, and as a direct site contact for the Line Inspector.

10.1.4 Thermography Surveys

Annual thermography surveys are conducted of all connections to detect heat patterns and temperature differences to proactively identify potential issues related to loose connections, overloading and phase imbalance in electrical components, with surveys, interpretation of results and scheduling of required rectification activities conducted by suitably qualified employees who hold a minimum Category 2 thermography certification.

Maximo Work Orders are used to initiate surveys and to schedule and manage works to address identified anomalies resulting from the surveys (*see 10.1.7 Scheduling and Prioritisation of Works*).

Results of the surveys are tracked using the Pole Master Register which documents the date of the last completed survey for each asset and Maximo Work Order reference for rectification works resulting from the surveys. Thermographic images which identify anomalies requiring further review, assessment or rectification are retained in a folder in Objective. Associated Work Order details are also retained in this folder.

The detailed requirements for conducting Thermography Surveys are documented in the site procedure Management of LV & HV Distribution System (YMA-OPS-PR-0374).

10.1.5 Asset Maintenance

Maintenance of the power distribution system is conducted routinely and on an as needs basis, and accounts for pole maintenance including replacement of pole caps, pole replacement, correcting leaning poles, maintenance of pole top structures and overhead line switchgear maintenance and replacement.

All wooden poles are treated with Preschem Polesaver rods at a frequency of not more than 37 months in line with pole inspections. Polesaver rods are placed in existing treatment holes and provide 3 – 5 years of protection and also deter termites.

10.1.6 Vegetation Management

EnergyAustralia Yallourn maintains an Electrical Safety (Electric Line Clearance) Plan (SHEMS11-SHE-L01) which provides an integrated set of procedures for the safe management of electrical line clearance and this plan links with the Bushfire Mitigation Plan.

A vegetation clearance corridor extends five metres either side of all powerlines and any vegetation within the corridor is kept below 1 metre in height. These requirements along with instructions for maintenance of trees adjacent to the corridor are explained in further detail in the YMA procedure *Management of HV & LV Overhead Distribution System (YMA-OPS-PR-0374)*.

Vegetation control companies conduct inspections and works on a twice-yearly basis to determine vegetation controls requirements and to slash and poison vegetation in the clearance corridor to maintain the vegetation in accordance with procedural requirements.

Arborists conduct annual inspections and vegetation management activities for vegetation that has the potential to grow into the clearance space of overhead assets.

10.1.7 Scheduling and Prioritisation of Works

All works associated with overhead powerlines including inspections and maintenance activities are managed via the Maximo Work Order system in accordance with the requirements of EnergyAustralia procedure – The use of Maximo Work Orders for Asset Management (YQMS10-AMT-P001-I01). Maximo is used to systematically manage the Initiate Work, Plan Work, Schedule Work, Do Work and Review & Close Work process for recording all Work Order history and costs to the Plant Asset/Location.

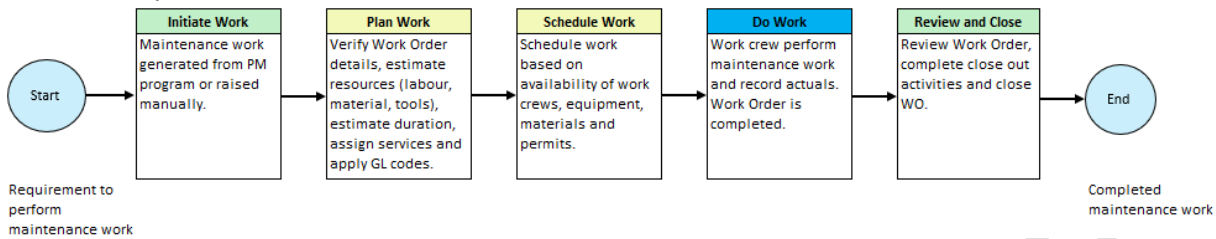


Figure 1 Maximo Work Order Management Process Blocks

Work Order Priority is determined using the Yallourn Business Risk Calculator with justification for classification of Priority 1 Work Orders required to be entered in the Work Order Priority Justification field when entering the Work Order into the system.

CONSEQUENCES						LIKELIHOOD				
	PEOPLE	ASSETS	ENVIRONMENT	REPUTATION	GENERATION/ FINANCIAL	A	B	C	D	E
						Practically impossible	Not likely to occur	Could occur or I've heard of it happening	It is known to occur or "it has happened"	Common or occurs frequently
1	First Aid Injury	Slight Damage (<\$10k)	Slight effect	Slight impact	Slight impact on revenue/finances (<\$10k)	Low	Low	Medium	Medium	High
2	Medical treatment Injury	Component level replacement/repair (\$10k-\$100k)	Minor effect	Limited impact	Partial output reduction or equivalent (\$10k-\$100k)	Low	Medium	Medium	High	Extreme
3	Lost Time Injury less than 7 days	Equipment level replacement/repair (\$100k-\$5m)	Localised effect	Local area impact	Unit off line <4hrs or equivalent (\$100k-\$5m)	Medium	Medium	High	Extreme	Extreme
4	Lost Time Injury more than 7 days or fatality	Unit level damage (\$5m-\$50m)	Major effect	State wide impact	Unit off line >4hrs or equivalent (\$5m-\$50m)	Medium	High	Extreme	Extreme	Extreme
5	Multiple Fatalities	Multiple unit capability damage (>\$50m)	Massive effect	National impact	Multiple units off line (>\$50m)	High	High	Extreme	Extreme	Extreme

Figure 2 Maximo Yallourn Business Risk Calculator

Identification of defects in the system initiates creation of work orders for rectification of the defects. Work orders related to Condition Based defects or that have Health & Safety implications are assigned a due date for completion when the work order is entered into Maximo. Work orders are classified according to the following descriptions based on the priority for the works to be completed:

Work Order Priority	Description
Priority 1 (Urgent) Management approval is required to extend the scheduled date for completion of the works.	<p>A Work Order issued which will have an immediate impact or risk to either Health & Safety, Environment, Production or Plant. From a business perspective, a Priority 1 should be dealt with as soon as possible and should also include a telephone call to the relevant person / Team regarding the reason for the impact /risk.</p> <p>Priority 1 Work Orders are addressed as a matter of urgency with resources dedicated to addressing the identified issue prioritised.</p> <p>Maximo has an automatic feature (Escalation) around the initiation of Priority 1 Work Orders. Notification emails are delivered to the relevant Managers and Teams including details of a newly initiated Priority 1 Work Order. Daily management notifications are generated until the issue is addressed and the Work Order is closed.</p>
Priority 2 (High Risk)	<p>A Work Order issued which has the potential for a high impact or risk to Health & Safety, Environment, Production or Plant. These should be dealt with promptly through the normal Work Order planning/scheduling process.</p>
Priority 3 (Medium Risk)	<p>A Work Order issued which has the potential for a <u>medium impact or risk</u> to either Health & Safety, Environment, Production or Plant, dealt with through the normal Work Order planning/scheduling process.</p>
Priority 4 (Low Risk)	<p>A Work Order issued which has the potential for a <u>low impact or risk</u> to Production or Plant, dealt with through the normal Work Order planning/scheduling process.</p> <p>Includes minor defects that have no impact of plant operation but are registered as a Work Order for retention of information with works to be completed when required labour and resources are available.</p>
Priority 5 (No Risk)	<p>A Work Order issued which has <u>no impact or risk</u> to Production or Plant. This should only be used for <u>all general materials issues from store, including PPA & general contract administration</u>. No Risk Plant based activities are unlikely to have the budget for work to be done.</p>

Table 5 Maximo Work Order Prioritisation

Notional timeframes for completion of Maximo scheduled works are included when the Work Order is generated, with the timeframe for completion based on the determined Work Order Priority for the works:

Work Order Priority	Notional Timeframe for completion of works
Priority 1 (Urgent)	Works to be scheduled to be completed within 6 months.
Priority 2 (High Risk)	Works to be scheduled to be completed within 18 months.
Priority 3 (Medium Risk)	Works to be scheduled to be completed within 24 months.
Priority 4 (Low Risk)	Works to be scheduled to be completed within 36 months.
Priority 5 (No Risk)	Works to be scheduled to be completed within 48 months.

Table 6 Maximo Work Order Notional Timeframes for Completion

A weekly review of Condition Based and Health & Safety Work Orders related to the operation and maintenance of overhead lines is conducted. The review is undertaken to determine and implement the following:

- Condition Based and Health & Safety Work Orders status, including those nearing completion dates
- Scheduling of works to complete priority Work Orders
- Revision of all Work Orders nearing due completion date status, reclassification as required and revised completion dates entered into Maximo
- Update of asset register to record status of all assets and outstanding actions

10.2 Non EnergyAustralia Overhead Lines

On the Yallourn site, there are overhead lines owned and managed by others, typically AusNet Services powerlines. The AusNet Services powerlines are located on easements on the site and are clearly marked on the site drawings (Appendix 2). These lines are managed by AusNet Services and the management of these lines is included in their Bushfire Mitigation Plan; hence they are not included in the EnergyAustralia Yallourn Bushfire Mitigation Plan.

There are responsibilities for both EnergyAustralia and AusNet Services to manage the easements in accordance with this Plan, the Electrical Safety (Electric Line Clearance) Plans and with the Yallourn site lease agreement covering the line easements.

10.3 Wildfire Risk Mitigation Committee

The Estate Services Team manages the Wildfire Risk Mitigation Committee to coordinate the fuel reduction works across the site. The Wildfire Risk Mitigation Committee meets monthly, reviews the conditions on and around the site, monitors the implementation of the Bushfire Mitigation Plan and implements action to ensure that the EnergyAustralia Yallourn site is adequately protected against wildfire attack. A specific focus is placed on fire risk mitigation by the committee during the fire danger period.

The Wildfire Risk Mitigation Committee includes representatives from the Latrobe Shire, Fire Rescue Victoria (FRV), Ausnet, Department of Transport and Planning (DTP), Department of Energy, Environment and Climate Action (DEECA), VicRoads, V/line and the EnergyAustralia Yallourn contracted grazing company to discuss and monitor the fire mitigation actions particularly during the fire danger period.

Fire hazard removal works include slashing, mulching, pruning and controlled fuel reduction burns. These works are assessed prior to each fire season when a program is established and enacted. Regular inspections during progress of works are conducted to maintain hazard reduction priorities and report to management.

EnergyAustralia Yallourn has a lease with a grazing contractor over extensive perimeter lands as well as strategic areas within the Mine. The conditions of the lease require cooperation on grass fuel reduction for the annual fire season. A representative from the grazing contractor participates in the Wildfire Risk Committee meeting.

10.4 Hot Works

All hot works on the site are managed according to specific procedures.

The Mine Hot Works Procedure provides the methodology for the undertaking of hot works within the mine. Hot Work Permits are issued for all hot works carried out in the Mine. The Issuing Authority advises personnel of all restrictions that may apply to hot works, including the non-issue of Hot Work Permits on high-risk days. Restrictions are in place for the issuing of Hot Works Permits on days of total fire ban and internal fire alerts are controlled through this procedure.

The Power Station controls the instruction Hot Works SHEMS11-SHE-P500-I01 to manage all hot works on the Power Station site for general conditions and for days of total fire ban.

10.5 Days of Total Fire Ban

The Standard Operating Procedure for Applying for FRV Permits and Internal Permits to Carry Out Hot Works on Days of Total Fire Ban SHEMS11-SHE-P001 defines the process for obtaining a total fire ban exemption for essential works.

Mine procedure "Carrying out Hot Works on Days of Total Fire Ban", must be followed if hot work needs to be done in the Mine on a total fire ban day.

Resourcing requirements are reviewed daily, and additional resources are provided on site as required in accordance with site Trigger Action Response Plan for High Fire Danger Periods and accounting for CFA Fire Danger Ratings.

10.6 High Fire Danger Periods

EnergyAustralia Yallourn apply to FRV annually for Schedule 14 permits which enable the business as an essential service to carry out works for continued operation of the Yallourn Mine and Power Station.

On days of high fire danger, the switching of overhead powerlines is minimised. Electrical operators pay particular attention to survey the area surrounding each pole switch for hot embers after switching has been completed.

In the event of a fire threatening the Yallourn site, the Site Emergency Response Plan is initiated with the site emergency management team directing all responses including the shutdown or isolation to electric lines as required.

All substations have fire detection systems which are checked as part of a monthly routine by a competent contractor.

10.6.1 Trigger Action Response Plan (TARP) for High Fire Danger Periods

The Yallourn Mine maintains an operational Trigger Action Response Plan (TARP) for High Fire Danger Periods to ensure that there are adequate resources and controls implemented on days that it is anticipated that the Mine could potentially be impacted by a fire. Triggers for additional controls to be implemented are identified taking into account forecast weather conditions (temperature and wind conditions).

The implementation of the TARP is the responsibility of the Mine Manager or his nominated delegate and consideration for actions required on days where forecast weather increases the risk of fire will be discussed and recorded at the daily Mine Planning Meeting on the preceding day.

The operational TARP is provided as Appendix 4.

10.7 Incident Response, Reporting and Investigation

10.7.1 Hazard Reporting

The Yallourn Mine maintains a Hazard Reporting process whereby identified hazards are recorded and submitted to relevant supervisors for review and reporting. Hazards are logged in the appropriate system, either Synergy for Mine Operations or Maximo for Mine Maintenance with actions to rectify the hazards also identified and tracked to completion.

10.7.2 Incident Response

Any smoulder or fire event that is identified in the Mine is required to be extinguished immediately and reported following site reporting requirements.

A smoulder event is a small ignition of coal either on the coal / ground surface or on an item of machinery that is quickly identified and extinguished and where no damage to equipment or escalation of the event occurs. Typically, a smoulder event is responded to by an individual and quickly extinguished.

In the event of a fire, all actions will be in accordance with site Emergency Response Plan, including operation of overhead lines and associated infrastructure. Conditions will be monitored and appropriate actions undertaken including isolation of lines and electrical assets as required.

In the event that a fire is identified in close proximity to electrical assets, resources will be deployed as is appropriate to reduce potential for damage to the assets.

Incident response for electrical incidents is in accordance with the site Emergency Response Plan (SHEMS12-SHE-L01) with emergency services provided on site by Estate Services Emergency Response Team, a site based team who are equipped for and trained in various aspects of emergency response, with escalation to external agencies as required.

10.7.3 Incident Reporting

All fires including smoulders must be reported and their details recorded no matter how minor they seem. Immediate reporting is required to the Yallourn Mine Control Centre on 5128 2118 or (Radio Channel 1) as soon as possible with the following details to be reported:

- a) The location of the fire;
- b) The size of the fire;
- c) The type of fire (burning coal, burning belt, electrical equipment fire, etc.);
- d) Any nearby plant in danger;
- e) Whether the smoulder / fire has been extinguished.

Following notification of a smoulder / fire to the Control Centre, the Control Centre operator will notify Fire Services and follow site emergency reporting protocols.

In addition to reporting fires or smoulders to the Mine Control Centre, the Operations Fire Report Sheet is to be used to record the details of fires or smoulders. Report sheets are to be completed and handed to the Workgroup Supervisor (or site contact for Contractors) no later than the end of the shift, even if the fire has already been reported to the Mine Control Centre.

The Fire Report sheets are then forwarded to Fire Services for review to determine whether or not a more detailed investigation is required and for recording in the Mine Fire database.

In the event of a fire or coal smoulder that meets the following criteria, the Shift Supervisor is to notify Estate Services Control Room Operator as soon as practicable of an event in the mine that is required to be communicated to Fire Rescue Victoria, including whether the fire or smoulder has been extinguished:

- Any fire (where flames are identified)
- Any event where multiple coal smoulders are identified
- Any fire or smoulder greater than 1 metre on its longest edge

The Mine has regulatory reporting requirements in the event that a fire or smoulder is reported to have occurred in the Mine site. The Mine Manager is responsible for ensuring that events are reported to both the Earth Resources Regulator and WorkSafe Victoria in accordance with the following protocols:

The Earth Resources Regulator is required to be notified of all smoulders of fires that occur within the Mine boundary. Verbal notification is required to be made by phoning the duty officer – Ph 0419 597 010 as soon as practicable following the event and a more detailed report sent via email to errchiefinspector@deeca.vic.gov.au using the [ERR / FRV Fire notification form](#).

Fire Rescue Victoria are also required to receive email notification of all events to fsc-operations@frv.vic.gov.au via the ERR / FRV Fire notification form.

The criteria for WorkSafe notification is as follows:

WorkSafe Victoria do not deem all smoulder events as notifiable however any that pose a risk to health and safety remain notifiable in accordance with the definitions that smoulders/fires are most likely to pose this risk in the event that:

- It occurs on a total fire ban or code red day, or
- it is greater than 1 metre on its longest side, or
- the fire placed a member of the public at risk.

Reporting is via the defined WorkSafe reporting protocols via phone notification (Ph 132360) and completing and submitting the WorkSafe online incident notification form.

All electrical incidents must be reported internally to the Mine Manager, Mine Maintenance Manager, Electrical Safety Management Scheme Manager and/or Mine Safety Advisors for determination of response and reporting requirements.

Immediate notification is required to be made to EnergySafe Victoria (ESV) and WorkSafe Victoria (WSV) in the event of incidents that involve electrical shocks, significant electrical plant damage or fire caused by Electrical equipment.

For the avoidance of doubt, all electrical incidents must be reported to ESV immediately following internal notification. ESV will then determine and advise reporting and investigation requirements.

Serious electrical incidents as defined below must be reported to Energy Safe Victoria (ESV) and WorkSafe Victoria (WSV) in accordance with the relevant reporting requirements:

- A person receiving an electric shock as a result of direct or indirect contact with any asset or an electrical installation; or
- A person is killed or injured, or is likely to be killed or injured as a result of direct or indirect contact with any asset or an electrical installation; or
- Plant makes accidental contact with any live high voltage electric line, or live electrical equipment operated at high voltage; or
- Significant damage to property has occurred (in excess of \$50,000); or
- Serious risk to public safety has occurred or is likely to occur.

Near miss electrical incidents that have involved an imminent risk of electrocution or the potential for a serious electrical shock must also be reported to ESV.

The report to ESV must state the following.

- a) The nature of the incident
- b) where and when the incident occurred
- c) particulars of any person involved in the incident
- d) whether any emergency services attended the incident

A formal written report on a serious electrical incident must be sent to ESV within 20 days of the incident. Refer to Clause 27 (4) of the Electricity Safety (Management) Regulations for what information must be included in the report. All reports must be recorded in the SHE documentation process.

10.7.4 Incident Investigation

All electrical incidents must be investigated in accordance with Yallourn Mine incident investigation procedures with remedial recommendations and actions identified, implemented and tracked in accordance with defined timeframes via the most appropriate system, being Synergy for works related to mining operations and Maximo for electrical works.

All reports and investigations must be recorded in Synergy and / or the EnergyAustralia documentation control system 'Objective' for a minimum of 7 years. The report must be made available to Energy Safe Victoria if required.

10.8 Training and Competence

All personnel carrying out work on site are fully site inducted. The induction process states the minimum requirements for carrying out work on site, the need to report fires and provide firefighting assistance within their capabilities.

All personnel and contractors required to perform tasks detailed in this plan are trained in the requirements defined in the site procedures, industry standards and legislation for the specific tasks that are conducted. The training of personnel is managed and recorded by training coordinators in the Mine and Power Station while competencies of contractors performing work are obtained and recorded, with any site-specific training requirements provided and / or verified as having been completed prior to them commencing activities on site. The minimum competency and training requirements for people who conduct work under this plan are documented in Table 6 below:

Description of works	Required Competency (Min requirements)	Required Site Training
Contracted Works		
Vegetation Works		
Vegetation works include annual vegetation inspections within the power line clearance corridor (5 metres either side of all powerlines) and clearing and management of vegetation within the corridor by spraying, slashing, pruning or mulching the vegetation to a height that is no greater than 1 metre tall. Vegetation workers do not conduct works within the No Go Zone or the Spotter Required Zone.	No competency requirements. EnergyAustralia engage suitable vegetation control companies who supply personnel and equipment to conduct the required works.	<ul style="list-style-type: none"> - Site Induction - Blue Book training and annual refresher - Work in the Vicinity of Powerlines Procedural training
Arborist Works		
Arborist works include annual assessment of trees for actual or potential growth into the Electric Line Clearance Space and cutting / pruning of trees and limbs that are growing in the Electric Line Clearance Space or conducting preventative cutting / pruning of trees and limbs that have the potential to grow into the Clearance Space.	<ul style="list-style-type: none"> - Certificate III in Arboriculture (AHC30820) or equivalent. 	<ul style="list-style-type: none"> - Site Induction - Safety Rules – Access to Apparatus Procedural Training – Non-Authorised Recipient (NAR) - Blue Book training and annual refresher - Work in the Vicinity of Powerlines Procedural training - Electric Line Clearance Plan – site clearance distances and requirements
Line / Pole Inspections		
Inspections assess and record the condition of all poles regardless of type. Defects to be identified include: <ul style="list-style-type: none"> - Poles leaning more than 10 degrees from the perpendicular - Poles that lean into a carriageway by 5 degrees or more - Poles with deteriorating pole tops including but not limited to missing or damaged pole caps - Failures such as broken tails, cracked insulators, incorrect or damaged anchors, rusting clips/conductors, damaged or rotted cross arms or transformer supports etc. 	<ul style="list-style-type: none"> - UETDRDP11A Inspection Overhead Poles - UETDREL18A Inspect and treat Poles - Cert II in ESI Asset inspection 	<ul style="list-style-type: none"> - Site Induction - Safety Rules – Access to Apparatus Procedural Training – Non-Authorised Recipient (NAR) - Blue Book training and annual refresher - Work in the Vicinity of Powerlines Procedural training

Approved by: Head of Yallourn

Doc Ref: A1038971 - SHEMS11-SHE-P015-L01 - EnergyAustralia Yallourn Bushfire Mitigation Plan

Control Status: Controlled when viewed on the screen, uncontrolled if subsequently printed

Last Major Review: 04/05/2026

Version No: 16.0 | Status: APPROVED

Next Review Due: 04/05/2027

Doc No.: SHEMS11-SHE-P015-L01

Print Date: 5/06/2026

Page: 20 of 32

Description of works	Required Competency (Min requirements)	Required Site Training
Concrete poles are limited to visual inspection and recording of observed above-ground defects. All wooden poles are treated with Preschem Polesaver rods in conjunction with each inspection cycle.		

Description of works	Required Competency (Min requirements)	Required Site Training
EnergyAustralia Employee Works		
Electrical Worker – Tech, Engineers		
Provide technical support for electrical works, conduct electrical testing, commissioning and decommissioning, develop and conduct site competency assessments and arrange external training, conduct ESMS review and updates, conduct initial installation design, supervision of installation and maintenance activities, conduct procedural updates, oversee electrical workers contractor management.	<ul style="list-style-type: none"> - Tertiary training or equivalent - Level 1 CPR certification 	<ul style="list-style-type: none"> - Site Induction - Safety Rules – Access to Apparatus Procedural Training – Authorised Recipient (AR) - Blue Book training and annual refresher - AS3000 – Electrical Installations and Wiring Rules - ESMS training
Electrical Worker – O/H Lines - Certified		
Perform electrical work on HV and LV overhead power lines including installation, maintenance, repairs and replacement. Certification of electrical work on HV and LV overhead power lines.	<ul style="list-style-type: none"> - Electrical trade (line worker) in accordance with ESV criteria - Current ESV Lineworker’s Licence - Level 1 CPR certification - TLILIC0005 Licence to Operate a Boom-Type Elevating Work Platform (Boom Length 11 Metres or More) 	<ul style="list-style-type: none"> - Site Induction - Safety Rules – Access to Apparatus Procedural Training – Authorised Recipient (AR) - Blue Book training and annual refresher - ESMS training

Electrical Worker – O/H Lines		
Perform electrical work on HV and LV overhead power lines including installation, maintenance, repairs and replacement.	<ul style="list-style-type: none"> - Electrical trade (line worker) in accordance with ESV criteria - Level 1 CPR certification - TLILIC0005 Licence to Operate a Boom-Type Elevating Work Platform (Boom Length 11 Metres or More) 	<ul style="list-style-type: none"> - Site Induction - Safety Rules – Access to Apparatus Procedural Training – Authorised Recipient (AR) - Blue Book training and annual refresher - ESMS training
Thermography Survey		
Use of infrared camera to detect heat patterns and potential issues in electrical components such as connectors and insulators.	<ul style="list-style-type: none"> - Category 1 (minimum) thermography certification 	<ul style="list-style-type: none"> - Site Induction - Safety Rules – Access to Apparatus Procedural Training – Authorised Recipient (AR) - Blue Book training and annual refresher - ESMS training

All electrical operators are trained to the relevant site's procedures and competent to perform the electrical switching. All personnel carrying out maintenance work on electrical assets in the Mine are trained and competent for this work.

Site procedure SHEMS11-SHE-P502-I03 – Authorisation to perform electrical work on site, defines the process to register all authorised electrical workers for the site and ensure the competency of electrical workers.

YMA-TRN-PR-0125 Electrical work competency assessment procedure details the requirements for mine personnel electrical authorisation.

10.9 External Agencies

The Emergency Response Plan defines the function and responsibilities of the incident management team and the interface with emergency services and external agencies. Reporting to external agencies is done in accordance with the EnergyAustralia document SHEMS15-SHE-P001-A02 - Quick Guide - Immediate Incident Reporting. Yallourn provides assistance to fire control authorities, as required, in the investigation of fires on site.

10.10 Fire Management in the Mine

EnergyAustralia has developed a Mine Fire Control Management Plan (FCMP). The FCMP forms an integral component of EnergyAustralia Yallourn's SHE Management System and provides the framework, procedures and processes to effectively manage fire related hazards. The objectives of the FCMP are to ensure that effective processes and procedures are established, implemented and maintained to enable the effective management of fire related hazards at Yallourn Mine.

In particular, a key objective of the FCMP is to control and minimise any impact from a mine fire on the environment, public and employee safety and health, mine assets and continuity of coal supply.

In summary, the key objectives include:

- Provide the systems and processes to effectively manage the risk associated with a mine fire that could be sourced from either within the mine or external to the mine;
- Ensure public safety and health is effectively maintained;
- Minimise the impact of fire on the surrounding environment;
- Ensure public infrastructure is not adversely impacted including for example: roads, railway lines, rivers, power infrastructure, etc.;
- Maintain a safe working environment for all employees, contractors and stakeholders;
- Maintain continuity of operations, including infrastructure associated with coal supply and overburden removal;
- Comply with all relevant legal and other requirements;
- Maintain an environment of continuous improvement.

10.11 Fire Detection

Fire detection and alarm systems are used throughout the site. These systems provide early detection of fires and ensure that emergency services respond to the alarm. Alarms from the fire suppression and detection systems throughout the Yallourn Mine site are monitored in the Mine Control Room.

The Emergency and Security Team monitor and respond to all Power Station alarms and arrange for FRV and CFA back up where an actual fire is detected. Alarm systems are routinely tested for functionality and defects repaired promptly by Estate Services to the standard set in AS 1851-2012.

The Mine Fire Procedure details the actions required of all personnel working in the Yallourn Mine in relation to prevention, reporting and fighting of fires in or near the Mine.

10.12 Fire Extinguishers

Fire extinguishers are maintained and managed on site. In the Mine, adequate numbers and types of extinguishers are located and easily identified throughout the Mine with daily operations inspections conducted of extinguishers fitted to machinery and periodic inspection and replacement of extinguishers conducted by fire service personnel.

10.13 Vehicle Authorisation

Vehicles used in the Mine must be suitably equipped to enter a fire risk environment. Vehicles are not permitted to enter the Mine unless they have been inspected by a competent person according to the Vehicle Authorisation Inspection form and are authorised to enter the Mine.

10.14 Reticulated Water Fire Suppression System

The fire service pipes, sprays and pumps system undergo a structured maintenance program based on inspection. This includes;

- Routine inspections completed every 6 months.
- Thorough inspections completed every 12 months.

Actions from these inspections, and any other daily or weekly routines, are raised as work orders and given a priority ranking which determines when specific works must be completed.

10.15 Contractors

Contractors engaged in overhead line maintenance and installation must be licensed, trained and competent for the task. Contractors are monitored in the conduct of these works.

All contractors are directly engaged by EnergyAustralia to maintain and install electrical assets.

Vegetation control companies inspect overhead conductors on a yearly basis and clear any vegetation approaching the minimum distances. Should any vegetation breach the minimum distances or contact the conductors then the line is isolated, and work is carried out under permit conditions. The minimum approach distance on site is determined more conservatively than the regulations guidelines. i.e., minimum approach distance to overhead lines is set as 5 metres.

11 Monitoring

The Wildfire Risk Mitigation Committee monitors the actions raised by the Committee to ensure that the EnergyAustralia Yallourn site is adequately protected against wildfire attack. The Committee has external representation who provide input to the meeting from a wide viewpoint to assist in the development and implementation of strategies to minimise the fire risk on site. The Mine Risk and Compliance Lead also monitors the fire mitigation strategies for the Mine and updates the Fire Control Management Plan and Bushfire Mitigation Plan as required.

12 Auditing and Reporting

The Bushfire Mitigation Plan is audited on an annual basis with the audit conducted by a qualified auditor. The audit process is initiated in March of every year by a work order in the site's computerised maintenance management system (Maximo). The preventive maintenance plan MHVRP410E and job plan MHVR410E defines the objectives and specifics of the audit.

The audit includes the following;

- Review the Electrical Safety (Electrical Line Clearance) Plan
- Monitor and audit the implementation of the Bushfire Mitigation Plan (this plan)
- Identify any deficiencies in the plan or the implementation.
- Monitor and audit the effectiveness of inspections under the plan.
- Propose improvements for the plan and the plan's implementation.
- Ensure any necessary training for the performance of the plan has been carried out.
- Monitor and audit the competence of persons assigned to carry out the inspections.

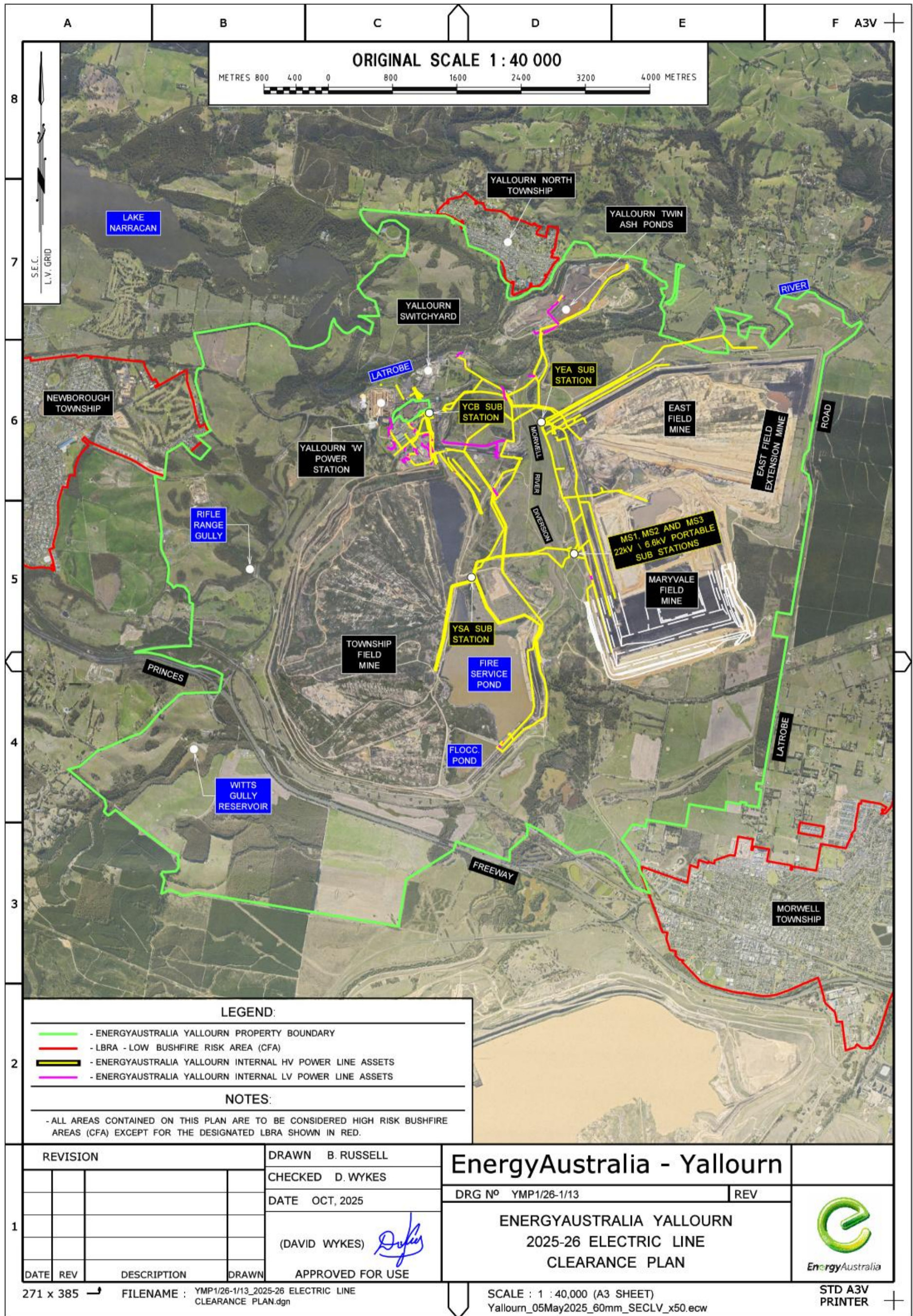
The audit must address the issues identified in clause 6(n) of the Electricity Safety (Bushfire Mitigation) Regulation. Any deficiencies found within the monitoring and auditing process triggers an action, which will be remedied by establishing improvements to the plan.

The revised Bushfire Mitigation Plan is then approved by the Head of Yallourn and sent to Energy Safe Victoria before July every five years.

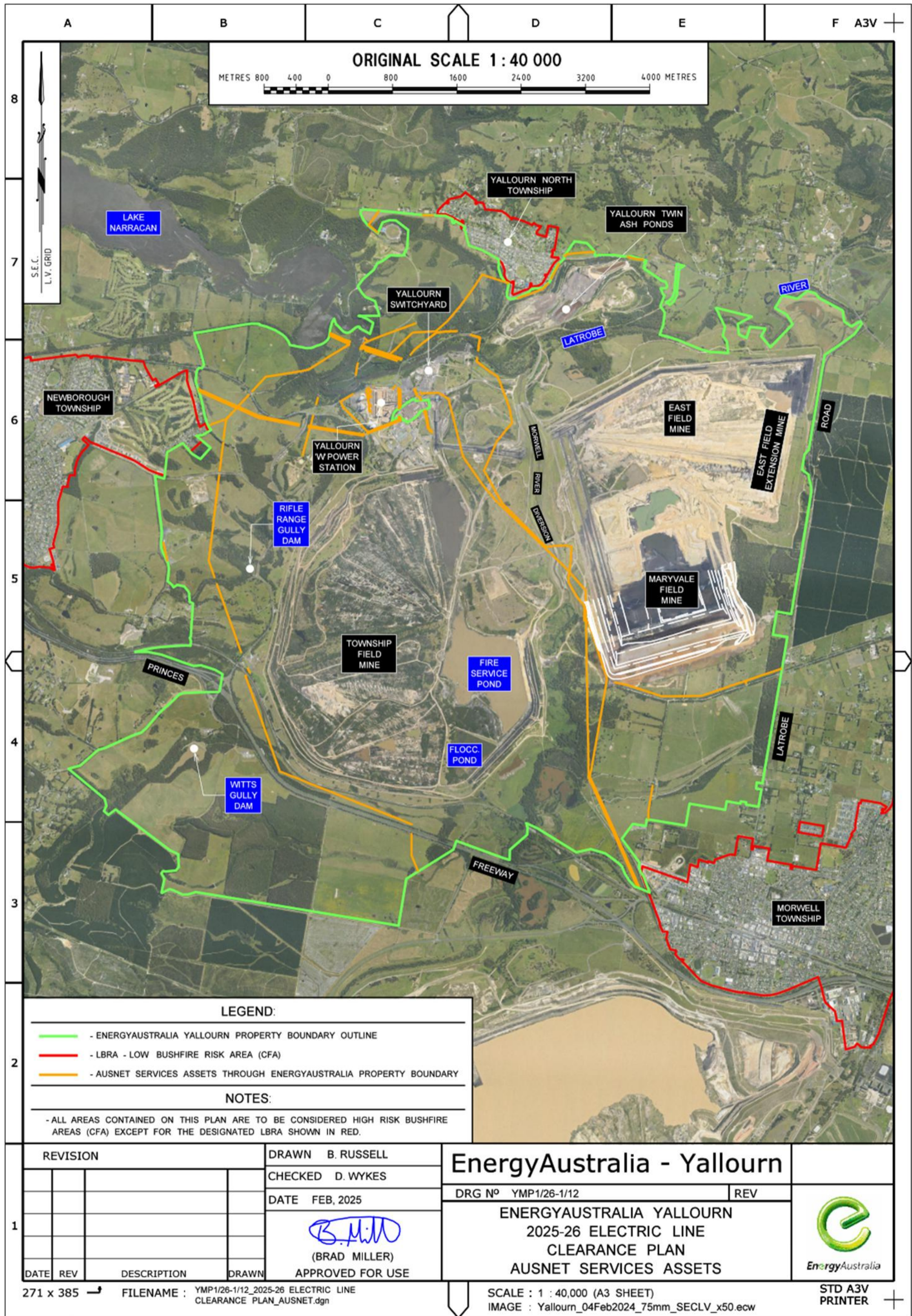
13 References

Document ID	Document Title
A1039749	SHEMS11-SHE-P015 - Management of the EnergyAustralia Yallourn Bushfire Mitigation Plan
A1039787	SHEMS11-SHE-L01 - Electricity Safety (Electrical Line Clearance) Plan
A1065137	SHEMS13-SHE-L04 - Mine Fire Control Management Plan (FCMP)
A1044340	SHEMS11-SHE-P500-I01 - Hot Works (Power Station)
A1037878	SHEMS10-SHE-P001 - Removal of Vegetation on the EnergyAustralia Yallourn Site
A1017664	SHEMS12-SHE-L01 - Emergency Response Plan
A1031727	SHEMS11-SHE-P001 - Applying for CFA Permits and Internal Permits to Carry Out Hot Works on Days of Total Fire Ban
A1034365	SHEMS11-SHE-P502-I03 – Authorisation to Perform Electrical Work on Site
A1034637	YMA-OPS-PR-0374 - Management of LV & HV Overhead Distribution System
A1031477	YMA-H&S-PR-0129 - Carrying Out Hot Works on Days of Total Fire Ban
A1042354	YMA-H&S-PR-0100 - Fire Procedure
A1032855	YMA-OPS-PR-0343 - Hot Works Procedure
A1044137	YMA-OPS-WI-0217 - Control Centre Fire Alert
A1036207	YMA-OPS-FO-0309 - Vehicle Authorisation Inspection
A1049221	YMA-OPS-FO-0339 - Pole Inspection / New Pole / Pole Removal Data Sheet
A1030405	SHEMS15-SHE-P001 Reporting, Investigation and Classifying Incidents
A1034223	SHEMS11-ESV-P001 - Wildfire Risk Mitigation
A1065454	YQMS10-AMT-P001-I01 – Use of Maximo Work Orders for Asset Management
N/A	Electricity Safety Act 1998
N/A	Electricity Safety (Bushfire Mitigation) Regulations 2023
N/A	Energy and Land Legislation Amendment (Energy Safety) Act 2025

Appendix 1 - Electric Line Clearance Plan – EA Assets



Appendix 2 – Electric Line Clearance Plan – Ausnet Assets



Appendix 3 - At Risk Electric Lines detail

Line (feeder) denomination	HV	LV	Number of poles
MS1 - 671	✓		42
MS2 - 681	✓		20
MS3 - 691	✓		20
YCB - 213	✓		69
YCB - 224	✓		110
YCB - 611	✓	✓	58
YCB - 613	✓		6
YCB - 615	✓	✓	89
YCB - 622	✓	✓	33
YCB - 624	✓	✓	72
YCB - 626	✓		5
YEA - 651	✓		29
YEA - 655	✓		26
YEA - 662	✓	✓	28
YEA - 666	✓		29
YSA - 631	✓		38
YSA - 633	✓		64
YSA - 642	✓	✓	69

Note: The information included in this table is accurate at the time that this Bushfire Mitigation Plan is approved with changes to the information possible as a result of line extensions and decommissioning activities over time.

Appendix 4 – Yallourn Mine Operational Trigger Action Response Plan (TARP) for High Fire Danger Periods

The Purpose of this TARP is to ensure that controls appropriate to the conditions are implemented so far as reasonably practicable on days where forecast weather increases the risk of fire. This TARP is for reference on days preceding those predicted to deliver weather conditions that have the potential to increase the possibility of fires within the Mine boundary.			
TRIGGER	ACTION	RESPONSE	RESPONSIBLE PERSON
FORECAST 0°C - 35°C (0km/h – 20km/h winds)	Level 1 NORMAL OPERATION	No changes required for normal Mine Operations.	All personnel
		Monitoring of coal surfaces and wetting down as required.	Fire Services Supervisor / Fire Services Leading Hand
FORECAST >35°C (0km/h - 20km/h winds)	Level 2 INCREASED AWARENESS	Assess planned works for risk potential of potential impact & change plan if deemed necessary.	Mine Manager / Mine Superintendent / Fire Services Supervisor
		Water cart availability and operation on access roads and in operational areas for day shift.	Mine Superintendent / 9 Day Fortnight Supervisor
		Regular wetting of coal surfaces.	Fire Services Supervisor / Fire Services Leading Hand
		Monitor wind conditions / direction and re-direct or increase resourcing as required	Mine Manager / Mine Superintendent
FORECAST >30°C - 35°C (>20km/h winds)	Level 3 ADDITIONAL RESOURCING	Assess planned works for risk potential of potential impact & change plan if deemed necessary.	Mine Manager / Mine Superintendent / Fire Services Supervisor
		Available water carts to be manned.	Mine Superintendent / 9 Day Fortnight Supervisor
		Water cart coverage to 7pm.	Mine Superintendent / 9 Day Fortnight Supervisor
		Regular wetting of coal surfaces.	Fire Services Supervisor / Fire Services Leading Hand
		Hot works restricted to workshops and essential works only.	Fire Services Supervisor / Fire Services Leading Hand
		Monitor wind conditions / direction and re-direct or increase resourcing as required	Mine Manager / Mine Superintendent
FORECAST >35°C (>20km/h winds) TOTAL FIRE BAN (regardless of forecast weather conditions)	Level 4 ESSENTIAL WORKS ONLY	Assess planned works for risk potential of potential impact & change plan if deemed necessary.	Mine Manager / Mine Superintendent / Fire Services Supervisor
		RCB is filled on preceding shift and coal winning activities limited where possible.	Coal Production Coordinator / Shift Supervisor
		Available water carts to be manned & into night shift if required.	Mine Superintendent / 9 Day Fortnight Supervisor
		Water cart coverage to 7pm.	Mine Superintendent / 9 Day Fortnight Supervisor
		Hot Works permits only issued for vitally essential works and only with the Mine Manager's or his / her approved delegate's approval.	Fire Services Supervisor / Shift Supervisor / Fire Services Leading Hand
		Maintenance works on coal surfaces limited to essential works only.	Mine Maintenance Supervisor Mine Workshop Supervisor
		Monitor wind conditions / direction and re-direct or increase resourcing as required.	Mine Manager / Mine Superintendent
		Fire watch implemented if considered necessary	Mine Manager / Mine Superintendent / Fire Services Supervisor
		Mine fire alert issued if considered necessary.	Mine Manager / Mine Superintendent / Fire Services Supervisor
		Regular wetting of coal surfaces.	Fire Services Supervisor / Fire Services Leading Hand

Appendix 5 - Electricity Safety (Bushfire Mitigation) Regulation reference table

EA Yallourn BMP cross reference to the regulation		
Regulation reference	Prescribed particulars for bushfire mitigation plans—specified operators - Regulation	Yallourn BMP
6a	the name, address, email address and telephone number of the specified operator	Pg. 6, Sect. 3
6b	The position, address, email address and telephone number of the person who was responsible for the preparation of the plan	Pg. 6, Sect. 3
6c	the position, address, email address and telephone number of the persons who are responsible for carrying out the plan	Pg. 6, Sect. 3
6d	the email address (if any) and telephone number of the specified operator's control room so that persons in the room can be contacted in an emergency that requires action by the specified operator to mitigate the danger of bushfire;	Pg. 6, Sect. 3
6e	the bushfire mitigation policy of the specified operator to minimise the risk of fire ignition from its at-risk electric lines	Pg. 8, Sect. 6
6f	the objectives of the plan to achieve the mitigation of fire danger arising from the specified operator's at-risk electric lines	Pg. 5, Sect. 1
6g	a description, map or plan of the land to which the bushfire mitigation plan applies, identifying the location of the specified operator's at-risk electric lines	Pg. 7, Sect. 1 Pg. 28, App 1
6h	the preventative strategies and programs to be adopted by the specified operator to minimise the risk of the specified operator's at-risk electric lines starting fires	Pg. 10, Sect. 9
6i	a plan for inspection that ensures that all of the specified operator's at-risk electric lines are inspected at regular intervals of no longer than 37 months	Pg. 11, Sect. 10.1.3
6j	details of the processes and procedures for ensuring that each person who is assigned to carry out the inspections referred to in paragraph (i) has satisfactorily completed a training course approved by Energy Safe Victoria and is competent to carry out such inspections	Pg. 19, Sect. 10.8
6k	details of the processes and procedures for ensuring that persons (other than persons referred to in paragraph (j)) who carry out or will carry out functions under the plan are competent to do so	Pg. 19, Sect. 10.18
6l	the operation and maintenance plans for the specified operator's at-risk electric lines—	
	(i) in the event of a fire; and	Pg. 17, Sect. 10.7.210.1
	(ii) during a total fire ban day; and	Pg. 16, Sect. 10.5
	(iii) during a fire danger period	Pg. 156, Sect. 10.6
6m	the investigations, analysis and methodology to be adopted by the specified operator for the mitigation of the risk of fire ignition from its at-risk electric lines	Pg. 10, Sect 9 Pg. 11, Sect. 10.1
6n	details of the processes and procedures by which the specified operator will:	
	(i) monitor the implementation of the bushfire mitigation plan; and	Pg. 15, Sect. 10.3
	(ii) audit the implementation of the plan	Pg. 25, Sect. 12
	(iii) identify any deficiencies in the plan or the plan's implementation	Pg. 26, Sect. 12
	(iv) change the plan and the plan's implementation to rectify any deficiencies identified under subparagraph (iii);	Pg. 26, Sect. 12
	(v) monitor the effectiveness of inspections carried out under the plan; and	Pg. 25, Sect. 12 Pg. 26, Sect. 12
	(vi) audit the effectiveness of inspections carried out under the plan	Pg. 26, Sect. 12
6 (o)	the policy of the specified operator in relation to the assistance to be provided to fire control authorities in the investigation of fires near the specified operator's at-risk electric lines	Pg. 23, Sect. 10.9

Uncontrolled when printed